

Double-acting cylinders

Working pressure: 700 kg/cm²/10.000 psi.

All pistons have a salt bath nitriding treatment or a hard chrome plating, depending on the model, to resist corrosion and for longer life.

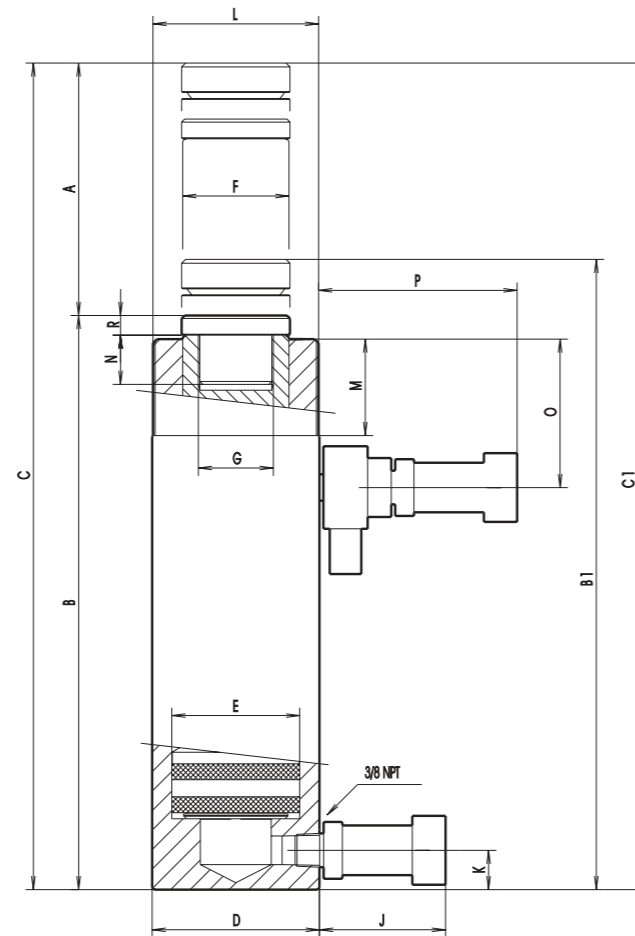
With built-in bronze guide for easier sliding of piston.

Fitted with a relief safety valve, ref. A-5538 on the piston retract side, to prevent accidental overpressure.

These cylinders are fitted with a removable grooved saddle, pressure mounted or screwed in the piston head. Are also equipped with a high flow female quick coupler with dust cap, ref. A-5507-H.

Carry handles on models weighing from 20 kg/44 lbs to 40 kg/88 lbs. Heavier models are fitted with eye hooks for transport.

With mounting holes and threaded areas protected against blows for easy coupling or special tooling applications.



*E= Pushing
*T= Pulling



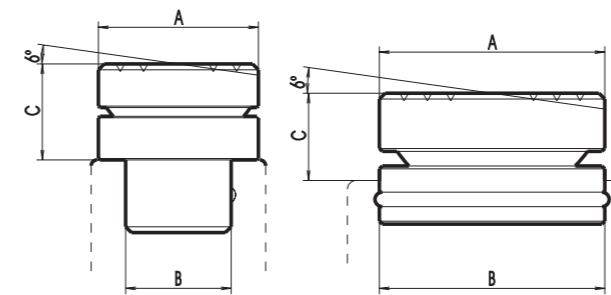
Cross section view

Hydraulic return



The hydraulic force being applied in both directions, these cylinders are very solid and used where a precision operation is required to move or position loads accurately on the assembly place. Widely demanded in public works and big structure manufacture.

Tilting saddle (optional)



Ref.	Used with	Dimensions mm/in.					
		A		B		C	
BCSRA-11	CDRA-9	40	1 9/16	22,1	7/8	20	25/32
BCSRA-23	CDRA-23, CDRA-31	55	2 11/64	36,3	1 7/16	23	29/32
BCDRA-55	CDRA-55	65	2 9/16	22,7	57/64	40	1 9/16
BCDRA-93	CDRA-93	80	3 3/32	42,2	21/32	46	1 13/16
BCSB-200	CD-200	138	5 7/16	124	4 7/8	50	2
BCSB-300	CD-300	155	6 1/64	130	5 1/8	65	2 9/16
BCSB-400	CD-400	185	7 9/32	160	6 5/16	78	3 5/64
BCSB-500	CD-500	205	8 1/16	180	7 3/32	88	3 15/32

Nominal capacity in	Ref.	Stroke mm. A in.	Maximum capacity kN T	Effective area		B ₁ , C ₁ with tilting saddle																Oil volume		Weight													
				cm ²	in ²	B	B ₁	C	C ₁	D	E	F	G	J	K	L	M	N	O	P	R	cm ³	in ³	Kg.	lbs.												
9	CDRA-9D	150 5 15/16	E 86,24 T 31,72	E 12,56 T 4,62	E 1,94 T 0,71	285	11 3/16	305	12	435	17 1/8	455	17 15/16	60	2 11/32	40	1 37/64	31,8	1 1/4	1 - 8 UNC	70	2 3/4	23 15/16	2 1/4 - 14 UNS	27	1 1/16	17 11/16	47 1 7/8	113	4 7/16	6 15/64	E 190 T 53	E 11,6 T 3,23	5,8	12,7		
23	CDRA-23D	150 5 15/16	E 227,7 T 70,54	E 33,18 T 10,28	E 5,12 T 1,6	315	12 7/16	338	13 5/16	465	18 5/16	488	19 7/32	85	3 3/8	65	2 9/16	54	2 1/8	1 1/2 - 16 UN	70	2 3/4	23 15/16	3 5/16 - 12 UNS	49	1 15/16	25 1	70 2 3/4	113	4 7/16	10 25/64	E 500 T 155	E 30,5 T 9,46	10,4	22,9		
31	CDRA-31D	150 5 15/16	E 303,1 T 127,3	E 44,18 T 18,55	E 6,84 T 2,87	338	13 5/16	363	14 9/32	488	19 7/32	513	20 3/16	100	3 15/16	75	2 61/64	57,15	2 1/4	1 1/2 - 16 UN	70	2 3/4	37 1 7/16	3 5/16 - 12 UNS	49	1 15/16	25 1	75 2 7/8	113	4 7/16	10 25/64	E 665 T 280	E 40,6 T 17,1	19,8	43,5		
55	CDRA-55D	150 5 5/16	E 539 T 194,07	E 78,54 T 28,28	E 12,17 T 4,38	321	12 5/8	361	14 7/32	471	18 17/32	511	20 1/64	130	5 1/8	100	3 15/16	80	3 6/32	1 - 12 UNF	70	2 3/4	23 15/16	5 - 12 UN	45	1 3/4	38	1 1/2	65	2 9/16	113	4 7/16	15 19/32	E 1175 T 425	E 71,8 T 26	28,2	62
	CDRA-55F	250 9 7/8	E 1965 T 707	E 120 T 43,1																																	
93	CDRA-93D	150 5 5/16	E 910,9 T 316,6	E 132,73 T 46,14	E 20,57 T 7,15	355	14	401	15 3/4	505	19 7/8	551	21 11/16	175	6 7/8	130	5 1/8	105	4 9/64	1 3/4 - 12 UN	70	2 3/4	47 1 27/32	6 7/8 - 12 UN	50	2	50	2	70 2 3/4	113	4 7/16	15 19/32	E 1992 T 692	E 121,6 T 42,2	60,3	132,6	
	CDRA-93F	250 9 7/8	E 3318 T 1154	E 202,5 T 70,5																																	
200	CD-200D	150 5 5/16	E 1945,8 T ----	E 283,52 T ----	E 43,95 T ----	356	14	406	16	506	19 15/16	556	21 7/8	242	9 9/16	190	7 1/2	150	5 15/16	----	70	2 3/4	62 2 7/16	----	----	----	----	65	2 9/16	113	4 7/16	5 3/16	E 4253 T 7088	E 260 T 432,7	135	297	
	CD-200F	250 9 7/8	E 7088 T ----	E 432,7 T ----																																	
300	CD-300D	150 5 5/16	E 2976,5 T ----	E 433,73 T ----	E 67,24 T ----	412	16 7/32	477	18 3/4	562	19 15/16	627	24 11/16	302	11 7/8	235	9 1/4	170	6 11/16	----	70	2 3/4	78 3 1/16	----	----	----	82	3 1/4	113	4 7/16	5 3/16	E 6506 T 10845	E 397 T 662	210	462		
	CD-300F	250 9 7/8	E 10845 T ----	E 662 T ----																																	
400	CD-400D	150 5 5/16	E 4017,1 T ----	E 585,35 T ----	E 90,75 T ----	417	16 13/32	495	19 1/2	567	22 5/16	645	25 3/8	349	13 3/4	270	10 5/8	210	8 1/4	----	70	2 3/4	84 3 5/16	----	----	----	90	3 9/16	113	4 7/16	5 3/16	E 8590 T 14315	E 525 T 87,4	301	662		
	CD-400F	250 9 7/8	E 14315 T ----	E 87,4 T ----																																	
500	CD-500D	150 5 5/16	E 5014 T ----	E 730,6 T ----	E 113,27 T ----	439	17 9/32	527	20 3/4	589	23 3/16	677	26 5/8	392	15 7/16	305	12	240	9 7/16	----	70	2 3/4	90 3 17/32	----	----	----	92	3 5/8	113	4 7/16	5 3/16	E 10960 T 18265	E 670 T 115	388	853		
	CD-500F	250 9 7/8	E 18265 T ----	E 115 T ----																																	