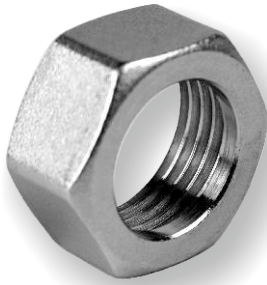


# Nippel-Mutter

## Coupling nut

Typ  
Type **NIMU**



Nippel-Mutter ähnlich DIN 3870 B mit metrischem Gewinde

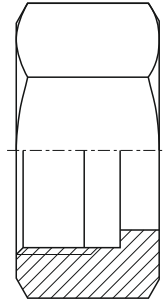
**Aufbau:**

Material: Stahl blank oder  
Stahl verzinkt

Coupling nut similar to DIN 3870 B with metric thread

**Construction:**

Material: steel blank or  
zinkplated steel



| Nennweite<br>NW                   | Gewinde    | Schlüsselweite SW<br>[mm]       | Kurz-<br>bezeichnung | Artikel<br>Nummer | Gewicht<br>[g/Stück] |
|-----------------------------------|------------|---------------------------------|----------------------|-------------------|----------------------|
| nominal size<br>DN                | thread     | width across flats A.F.<br>[mm] | short form           | part-no.          | weight<br>[g/piece]  |
| Stahl blank / steel blank         |            |                                 |                      |                   |                      |
| 3                                 | M 10 x 1,0 | 12                              | NIMU-LL-5            | 505 0 009         | 6                    |
| 4                                 | M 12 x 1,5 | 14                              | NIMU-LL-6            | 505 0 051         | 9                    |
| 6                                 | M 14 x 1,5 | 17                              | NIMU-LL-8            | 505 0 101         | 14                   |
| 8                                 | M 16 x 1,5 | 19                              | NIMU-LL-10           | 505 0 151         | 17                   |
| 10                                | M 18 x 1,5 | 22                              | NIMU-LL-12           | 505 0 201         | 24                   |
| 13                                | M 22 x 1,5 | 27                              | NIMU-LL-15           | 505 0 251         | 40                   |
| 16                                | M 26 x 1,5 | 32                              | NIMU-LL-18           | 505 0 301         | 59                   |
| 20                                | M 30 x 1,5 | 36                              | NIMU-LL-22           | 505 0 351         | 64                   |
| 25                                | M 38 x 1,5 | 46                              | NIMU-LL-28           | 505 0 401         | 113                  |
| Stahl verzinkt / zinkplated steel |            |                                 |                      |                   |                      |
| 3                                 | M 10 x 1,0 | 12                              | NIMU-LL-5            | 505 0 010         | 6                    |
| 4                                 | M 12 x 1,5 | 14                              | NIMU-LL-6            | 505 0 050         | 9                    |
| 6                                 | M 14 x 1,5 | 17                              | NIMU-LL-8            | 505 0 100         | 14                   |
| 8                                 | M 16 x 1,5 | 19                              | NIMU-LL-10           | 505 0 150         | 17                   |
| 10                                | M 18 x 1,5 | 22                              | NIMU-LL-12           | 505 0 200         | 24                   |
| 13                                | M 22 x 1,5 | 27                              | NIMU-LL-15           | 505 0 250         | 40                   |
| 16                                | M 26 x 1,5 | 32                              | NIMU-LL-18           | 505 0 300         | 59                   |
| 20                                | M 30 x 1,5 | 36                              | NIMU-LL-22           | 505 0 350         | 63                   |
| 20                                | M 30 x 2,0 | 36                              | NIMU-L-22            | 505 0 352         | 79                   |
| 25                                | M 38 x 1,5 | 46                              | NIMU-LL-28           | 505 0 400         | 111                  |

Typ  
Type **NIMU-G**

Nippel-Mutter in gleicher Ausführung mit Zollgewinde

Coupling nut in the same design with inched thread

| Nennweite<br>NW                   | Gewinde | Schlüsselweite SW<br>[mm]       | Kurz-<br>bezeichnung | Artikel<br>Nummer | Gewicht<br>[g/Stück] |
|-----------------------------------|---------|---------------------------------|----------------------|-------------------|----------------------|
| nominal size<br>DN                | thread  | width across flats A.F.<br>[mm] | short form           | part-no.          | weight<br>[g/piece]  |
| Stahl blank / steel blank         |         |                                 |                      |                   |                      |
| 3                                 | G 1/8"  | 14                              | NIMU-G-3             | 505 0 441         | 9                    |
| 6                                 | G 1/4"  | 17                              | NIMU-G-6             | 505 0 451         | 15                   |
| 8                                 | G 3/8"  | 19                              | NIMU-G-8             | 505 0 501         | 14                   |
| 13                                | G 1/2"  | 27                              | NIMU-G-13            | 505 0 551         | 44                   |
| Stahl verzinkt / zinkplated steel |         |                                 |                      |                   |                      |
| 3                                 | G 1/8"  | 14                              | NIMU-G-3             | 505 0 440         | 10                   |
| 6                                 | G 1/4"  | 17                              | NIMU-G-6             | 505 0 450         | 15                   |
| 8                                 | G 3/8"  | 19                              | NIMU-G-8             | 505 0 500         | 14                   |
| 13                                | G 1/2"  | 27                              | NIMU-G-13            | 505 0 550         | 44                   |
| 16                                | G 3/4"  | 32                              | NIMU-G-16            | 505 0 600         | 53                   |
| 20                                | G 1"    | 36                              | NIMU-G-20            | 505 0 650         | 47                   |