

# Ringaugen-Nippel

## Banjo nipple

Typ  
Type **RAN**



Ringaugen-Nippel ähnlich DIN 7642

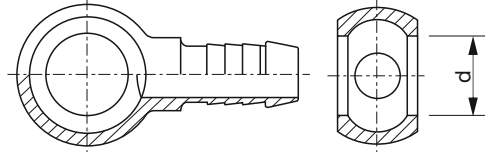
**Aufbau:**

Material: Stahl verzinkt

Banjo nipple similar to DIN 7642

**Construction:**

Material: zinkplated steel



für Schlauch NW	„d“ Ø [mm]	für Ringaugen-Schraube metrisches Gewinde	für Ringaugen-Schraube Zoll-Gewinde	Kurz- bezeichnung	Artikel Nummer	Gewicht [g/Stück]
for hose DN	„d“ Ø [mm]	for hollow screw metric thread	for hollow screw inch thread	short form	part-no.	weight [g/piece]
3	8	RAS-3	---	RAN-3	540 0 040	8
3	10	RAS-4	RAS-G-4	RAN-4/3	540 0 045	11
3	12	RAS-6	---	RAN-6/3	540 0 047	16
3	14	RAS-8	RAS-G-8	RAN-8/3	540 0 070	24
4	8	RAS-3	---	RAN-3/4	540 0 048	8
4	10	RAS-4	RAS-G-4	RAN-4	540 0 050	11
4	12	RAS-6	---	RAN-6/4	540 0 049	16
4	14	RAS-8	RAS-G-8	RAN-8/4	540 0 100	25
6	10	RAS-4	RAS-G-4	RAN-4/6	540 0 060	13
6	12	RAS-6	---	RAN-6	540 0 150	17
6	14	RAS-8	RAS-G-8	RAN-8/6	540 0 200	25
8	12	RAS-6	---	RAN-6/8	540 0 220	17
8	14	RAS-8	RAS-G-8	RAN-8	540 0 250	25
8	16	RAS-10	---	RAN-10/8	540 0 260	35
8	18	RAS-13	---	RAN-13/8	540 0 275	57
10	16	RAS-10	---	RAN-10	540 0 270	36
10	18	RAS-13	---	RAN-13/10	540 0 280	58
13	18	RAS-13	---	RAN-13	540 0 300	66
13	22	RAS-16	---	RAN-16/13	540 0 283	97
16	22	RAS-16	---	RAN-16	540 0 285	94
16	26	RAS-20	---	RAN-20/16	540 0 288	136
20	26	RAS-20	---	RAN-20	540 0 290	160
25	26	RAS-20	---	RAN-20/25	540 0 297	135