

# Quetsch-Fassung

## Squeeze cap

Typ  
Type **QF**



### Quetsch-Fassung

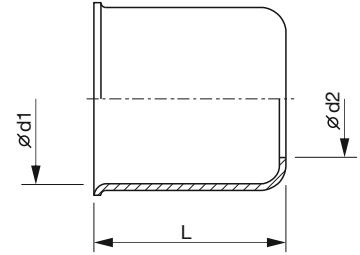
#### Aufbau:

Material: verzinkter Stahl (QF...) oder  
Edelstahl (QF-... Niro)

#### Squeeze cap

#### Construction:

Material: zincplated steel (QF...) or  
stainless-steel (QF-... Niro)



für Schlauch Nennweite (NW)	für WEPF Schlauch-Typ, oder vergleichbarem Außen-Ø	„d1“ Innen-Ø [mm]	„d2“ Bodenloch [mm]	„L“ Gesamtlänge [mm]	Kurz- bezeichnung	Artikel Nummer	Gewicht [g/Stück]
for hose size nominal size [DN]	for WEPF hose type, or comparable outer-Ø	„d1“ inner Ø I.D. [mm]	„d2“ bottomhole [mm]	„L“ total length [mm]	short form	part-no.	weight [g/piece]
Stahl verzinkt							
2	UE	9,0	5,5	15,0	QF-9	500 0 050	2
3	UE, UT	10,0	6,2	15,0	QF-10	500 0 100	2
3	UE, UT, UTE	10,5	6,5	15,0	QF-10,5	500 0 105	3
3	UTE, TEG	11,0	7,2	15,0	QF-11	500 0 200	3
4	PA-4	8,0	5,5	17,0	QF-8	500 0 030	2
4	UE, UT	12,0	7,7	15,0	QF-12 K	500 0 300	3
4	UTE, TEG	12,5	7,7	19,0	QF-12,5	500 0 321	4
4	UTE, TEG	12,5	7,7	15,0	QF-12,5 K	500 0 322	3
4	UTE, TEG	13,0	7,7	15,0	QF-13	500 0 500	4
4	UTE, TEG	13,0	9,8	15,0	QF-13 G	500 0 510	3
4/6	UE, UT	13,5	7,7	17,0	QF-13,5	500 0 520	4
6	UE, UT	14,0	10,1	15,0	QF-14 K	500 0 600	4
6	UT, UTE	14,5	10,1	20,0	QF-14,5	500 0 725	5
6	UTE, TEG	14,5	10,1	15,0	QF-14,5 K	500 0 727	4
6	UTE, TEG	15,0	10,1	17,0	QF-15	500 0 730	4
8	UE, UT	15,5	10,1	17,0	QF-15,5	500 0 740	5
8	UE, UT	15,5	11,0	25,0	QF-15,5 L	500 0 800	7
8	UE, UT	16,0	11,5	17,0	QF-16	500 0 900	5
8	UTE, TEG	17,0	11,7	20,0	QF-17	500 1 000	7
10	UE, UT	18,0	13,8	21,0	QF-18	500 1 020	8
10	UE, UT, UTE	19,0	13,9	20,0	QF-19	500 1 100	9
10	UTE, TEG	20,0	13,9	25,0	QF-20	500 1 150	11
13	BUE, UT	22,0	16,5	25,0	QF-22	500 1 200	11
13	UE, BUE, TEG	23,0	16,4	25,0	QF-23	500 1 300	12
13	UTE, BUE, TEG	24,5	17,0	32,0	QF-24,5	500 1 400	20
16	UT	26,5	20,3	32,0	QF-26,5	500 1 500	21
16	UE, UTE, TEG	28,0	20,8	32,0	QF-28	500 1 550	23
20	BUE, TEG	29,0	21,0	34,0	QF-29	500 1 600	25
20	BUE, TEG	30,5	24,5	33,0	QF-30,5	500 1 700	25
20	UE, TEG	33,0	25,0	33,0	QF-33	500 1 800	28
25	BUE, TEG	34,5	26,0	35,0	QF-34,5	500 1 900	31
25	BUE, TEG	35,5	26,0	35,0	QF-35,5	500 1 920	33
25	BUE, TEG	36,0	27,0	36,0	QF-36	500 2 000	35
25	BUE, TEG	38,0	27,0	40,0	QF-38	500 2 010	43
32	BUE	45,0	37,0	35,0	QF-45	500 2 100	47
40	BUE	53,0	41,0	43,0	QF-53	500 2 155	71
Edelstahl							
4	TUN	11,0	7,5	17,5	QF-11 Niro	500 0 152	3
6	TUN	13,0	9,2	18,0	QF-13 Niro	500 5 000	4
6	TUN	13,5	9,2	18,0	QF-13,5 Niro	500 5 001	4
8	TUN	15,2	11,6	18,0	QF-15,2 Niro	500 5 466	3
8	TUN	16,0	11,5	19,0	QF-16 Niro	500 5 100	5
10	TUN	19,0	13,8	20,0	QF-19 Niro	500 5 428	6
13	TUN, TUTN	23,0	16,4	25,0	QF-23 Niro	500 5 210	10
20	TUN, TUTN	29,0	20,7	30,0	QF-29 Niro	500 5 300	15
25	TUN, TUTN	34,5	26,0	35,0	QF-34,5 Niro	500 5 400	27
25	TUN, TUTN	36,0	26,0	35,0	QF-36 Niro	500 5 520	35
32	TUN, TUTN	45,0	35,0	37,0	QF-45 Niro	500 5 422	44
40	TUN, TUTN	53,0	41,0	43,0	QF-53 Niro	500 5 478	70
50	TUTN	64,1	49,3	46,3	QF-64,1 Niro	500 5 522	93
---	---	67,6	52,0	57,0	QF-67 Niro	500 5 480	122