

Short Lead Time for Flame Arrester Breather Valve - FC51 FULL RANGE PRESSURE COMPENSATING VARIABLE FLOW CONTROL VALVE

Technical data

Operating pressure(Mpa)	20.7
Max .flow rate(L/min)	114
Fluid temperature(°C)	-20 ~ 70
Torque to turn side lever spool	3.9Nm 3.9Nm with 20.7MPa on EX port
Valve body (Material) Surface treatment	casting phosphating surface

FC	*	51	G3/8
----	---	----	------

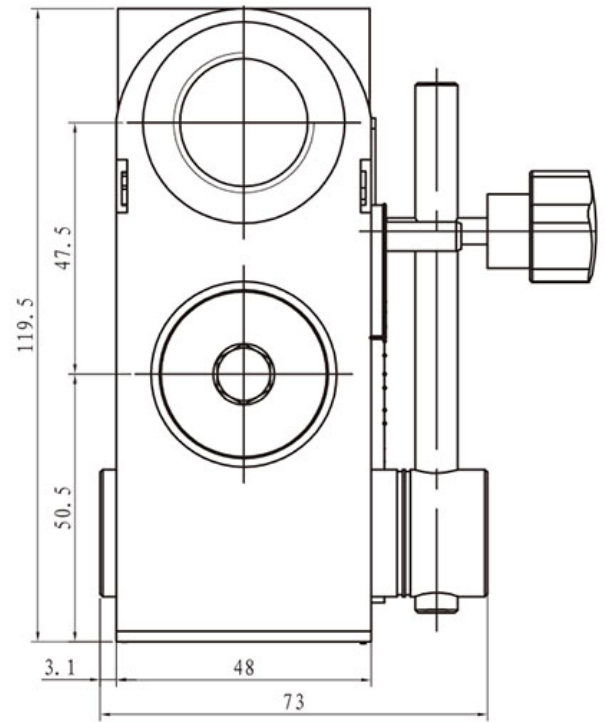
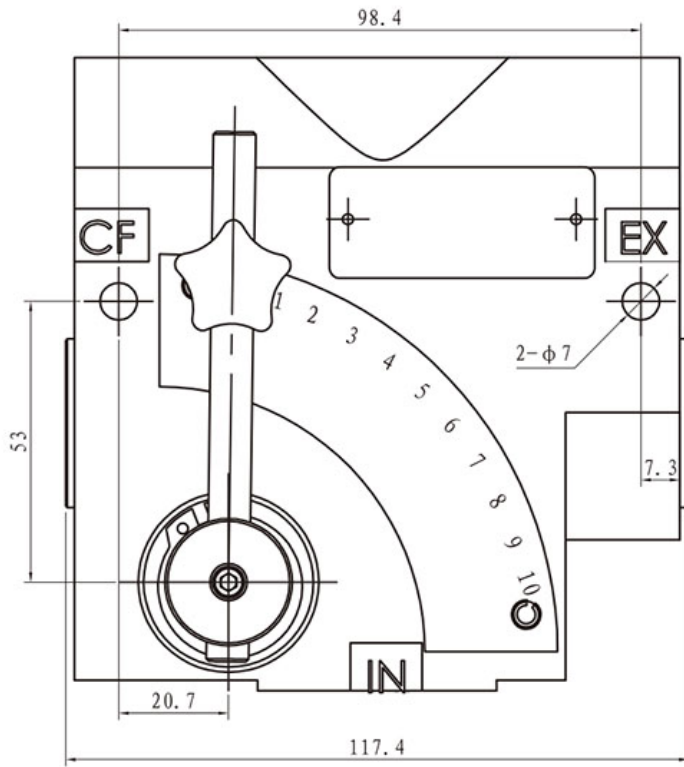
型号: Model

无=标准型不带溢流阀
 R=带有球溢流阀(标准设定压力10.3MPa)
 B=带有可调节溢流阀(标准设定压力10.3MPa)
 Omit=No relief
 R=Adj.ball spring relief
 (Standard 10.3MPa setting)
 B=Adj.high-lift spring relief
 (Standard 10.3MPa setting)

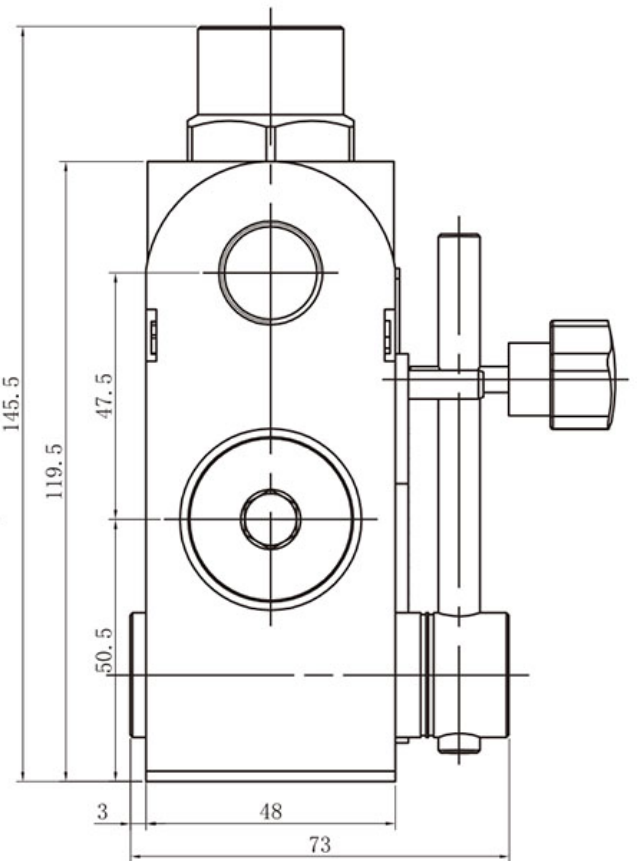
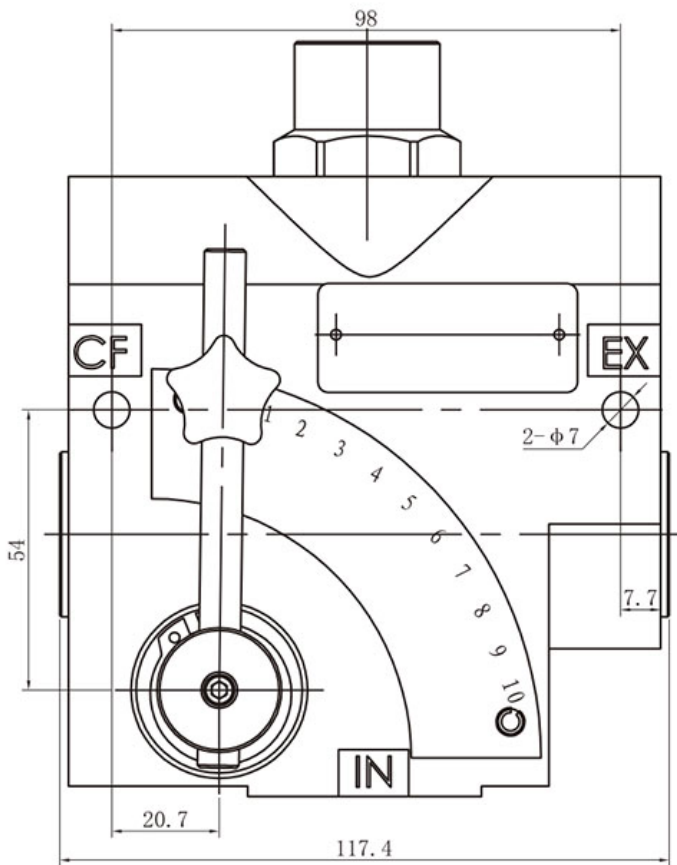
螺纹连接 Threaded Connection
 标准优先流量范围 standard
 G3/8 (0-30L/min)
 G1/2 (0-61L/min)
 G3/4 (0-114L/min)
 NPT1/2 (0-61L/min)
 NPT3/4 (0-114L/min)

51=标准型
 51-Standard flow control

FC51 Installation dimensions



FCR51 Installation dimensions



FCB51 Installation dimensions

