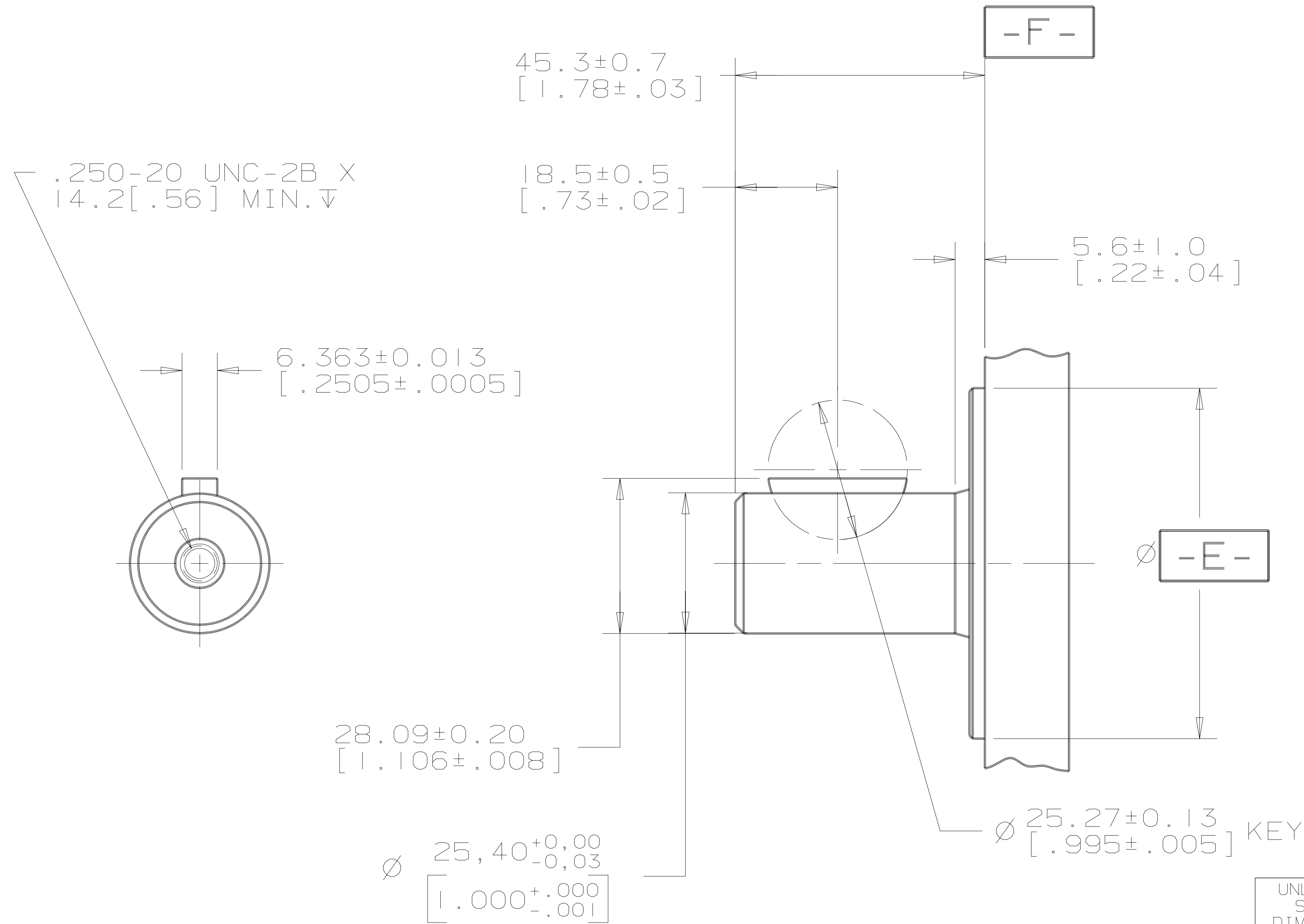


REV	DESCRIPTION	BY	CHK	DATE	ECN / MPS
A	ENGINEERING RELEASE	RLL		11-10-87	14736
C	REVISED	SSD		10-15-09	M77165



OUTPUT SHAFT
 01 = Ø25.4 [1.00] STRAIGHT WITH WOODRUFF KEY AND .250-20 THREADED HOLE

⊙	Ø0.26 [.010]	E
⊥	0.08 [.003]	F

UNLESS OTHERWISE SPECIFIED ALL DIMENSIONS ARE IN
 INCHES
 MILLIMETERS [INCHES]

TOLERANCES

.X	±	---
.XX	±	---
.XXX	±	---
∅	±	---°

UNSPECIFIED RADII ARE:

UNSPECIFIED DRAFT ANGLES ARE:
 -----°

B SIZE

DRAWING BASED ON ANSI Y14.5M-1982

EATON CORPORATION - CONFIDENTIAL AND PROPRIETARY
 NOTICE TO PERSONS RECEIVING THIS DRAWING AND / OR TECHNICAL INFORMATION

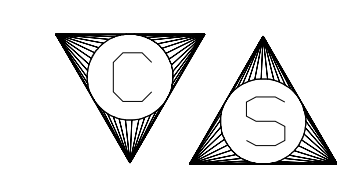
THIS DOCUMENT, INCLUDING THE DRAWING AND INFORMATION CONTAINED THEREON, IS CONFIDENTIAL AND IS THE EXCLUSIVE PROPERTY OF EATON CORPORATION, AND IS MERELY ON LOAN AND SUBJECT TO RECALL BY EATON AT ANY TIME. BY TAKING POSSESSION OF THIS DOCUMENT, THE RECIPIENT ACKNOWLEDGES AND AGREES THAT THIS DOCUMENT CANNOT BE USED IN ANY MANNER ADVERSE TO THE INTERESTS OF EATON, AND THAT NO PORTION OF THIS DOCUMENT MAY BE COPIED OR OTHERWISE REPRODUCED WITHOUT THE PRIOR WRITTEN CONSENT OF EATON. IN THE CASE OF CONFLICTING CONTRACTUAL PROVISIONS, THIS NOTICE SHALL GOVERN THE STATUS OF THIS DOCUMENT. COPYRIGHT 2008 EATON CORPORATION - ALL RIGHTS RESERVED.

EATON
 Powering Business Worldwide
 Eaton Hydraulics Inc.
 14615 Lone Oak Road
 Eden Prairie, MN 55344
 USA

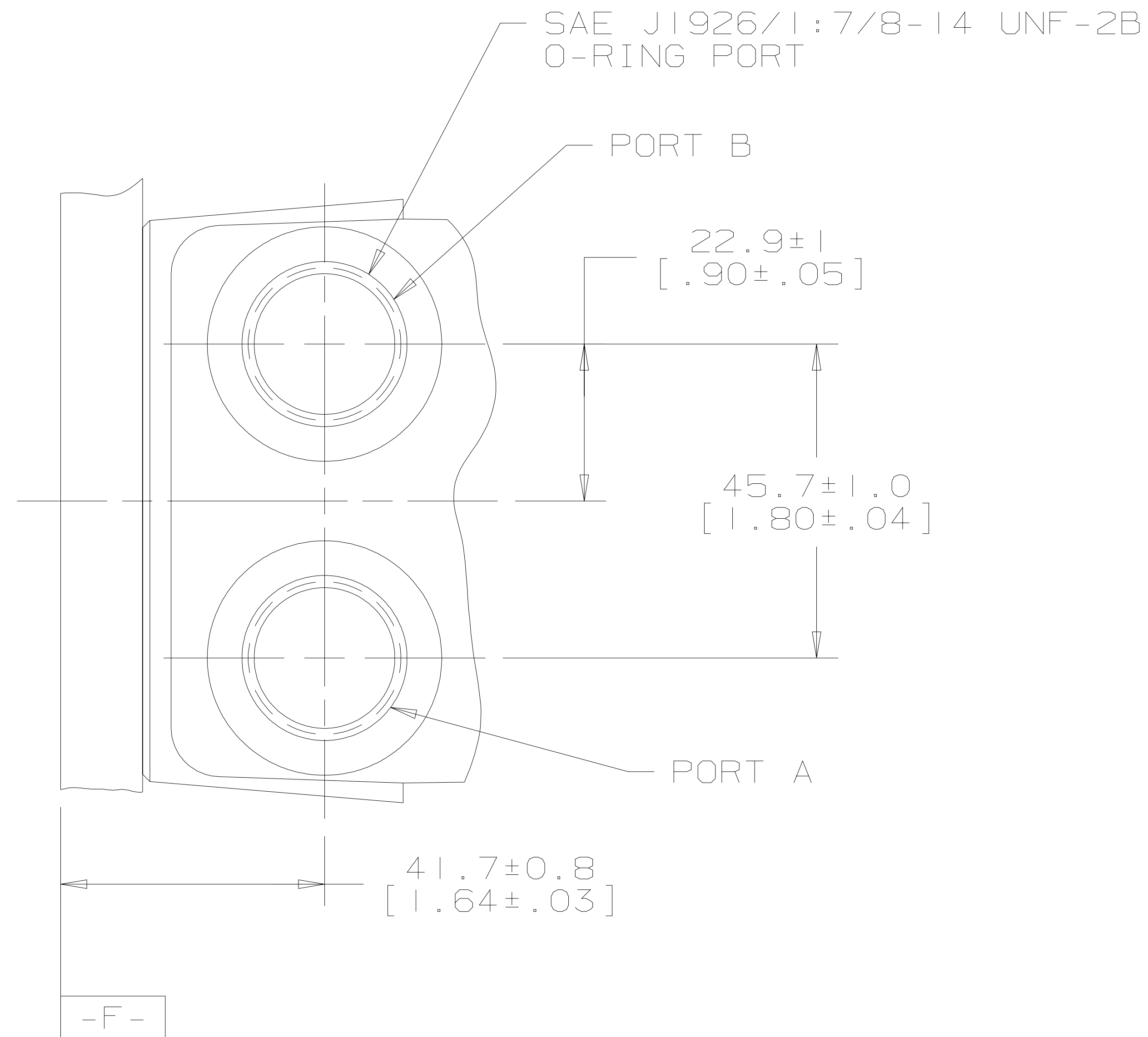
DRAWN RLL BY/DATE 10-28-87	MATERIAL/HEAT TREAT -
CHECKED - BY/DATE -	
ENGRG - BY/DATE -	TITLE SHAFT INSTALLATION
METALLURGY ----- BY/DATE -----	
THIRD ANGLE PROJECTION	NUMBER A-109-001
DO NOT SCALE	SCALE 1/1 SHEET 1 OF 1

ARITHMETICAL AVERAGE

REVIEWED FOR CLASSIFICATION PER ESP-042

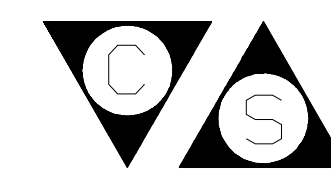


REV	DESCRIPTION	BY	CHK	DATE	ECN / MPS
A	RELEASE FOR SAMPLES AND ESTIMATES	RLL		11-10-87	14736
B	PORT TYPE OPTION WAS "A"	SSD		03-27-07	0004356
C	REVISED	KNR	SVG	06-11-09	M76172

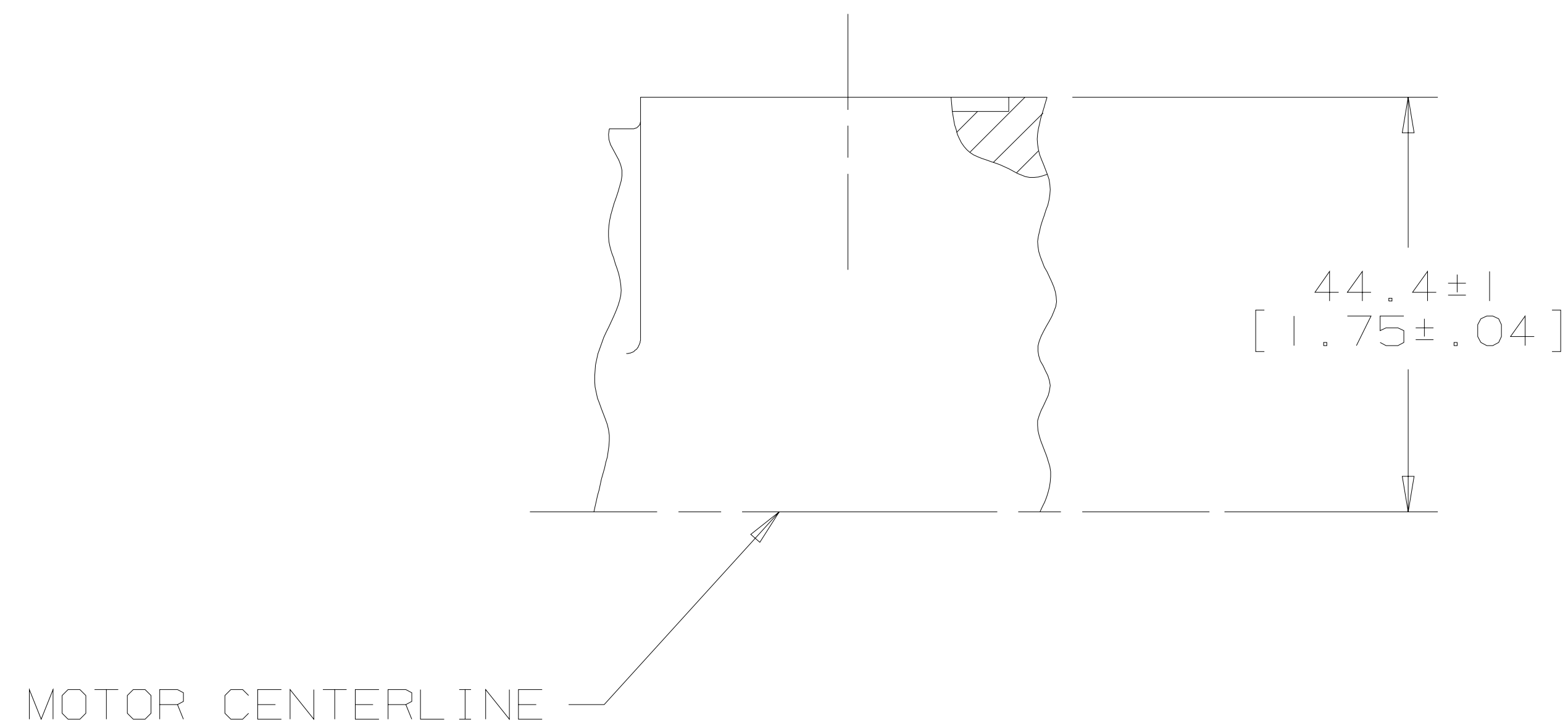


NOTE

PORT OPTION: AA



REVIEWED FOR CLASSIFICATION PER ESP-042



UNLESS OTHERWISE SPECIFIED ALL DIMENSIONS ARE IN INCHES <input type="checkbox"/> MILLIMETERS [INCHES] <input checked="" type="checkbox"/>		DRAWING BASED ON ANSI Y14.5M-1982	
TOLERANCES .X ± 0.1 .XX ± 0.01 .XXX ± 0.001 < ± 0.5° UNSPECIFIED RADII ARE: ----- UNSPECIFIED DRAFT ANGLES ARE: -----°		EATON CORPORATION - CONFIDENTIAL AND PROPRIETARY NOTICE TO PERSONS RECEIVING THIS DRAWING AND / OR TECHNICAL INFORMATION <small>THIS DOCUMENT, INCLUDING THE DRAWING AND INFORMATION CONTAINED THEREON, IS CONFIDENTIAL AND IS THE EXCLUSIVE PROPERTY OF EATON CORPORATION, AND IS MERELY ON LOAN AND SUBJECT TO RECALL BY EATON AT ANY TIME. BY TAKING POSSESSION OF THIS DOCUMENT, THE RECIPIENT ACKNOWLEDGES AND AGREES THAT THIS DOCUMENT CANNOT BE USED IN ANY MANNER ADVERSE TO THE INTERESTS OF EATON, AND THAT NO PORTION OF THIS DOCUMENT MAY BE COPIED OR OTHERWISE REPRODUCED WITHOUT THE PRIOR WRITTEN CONSENT OF EATON. IN THE CASE OF CONFLICTING CONTRACTUAL PROVISIONS, THIS NOTICE SHALL GOVERN THE STATUS OF THIS DOCUMENT.</small> COPYRIGHT 2008 EATON CORPORATION - ALL RIGHTS RESERVED.	
DRAWN RLL BY/DATE 11-5-87 CHECKED----- BY/DATE----- ENGRG----- BY/DATE----- METALLURGY----- BY/DATE-----		MATERIAL/HEAT TREAT TITLE PORT INSTALLATION	
B SIZE DO NOT SCALE		MICROINCHES <input checked="" type="checkbox"/> MICROMETERS <input type="checkbox"/> [MICROINCHES] 250 ARITHMETICAL AVERAGE	NUMBER A-110-001 SCALE 1/1 SHEET 1 OF 1



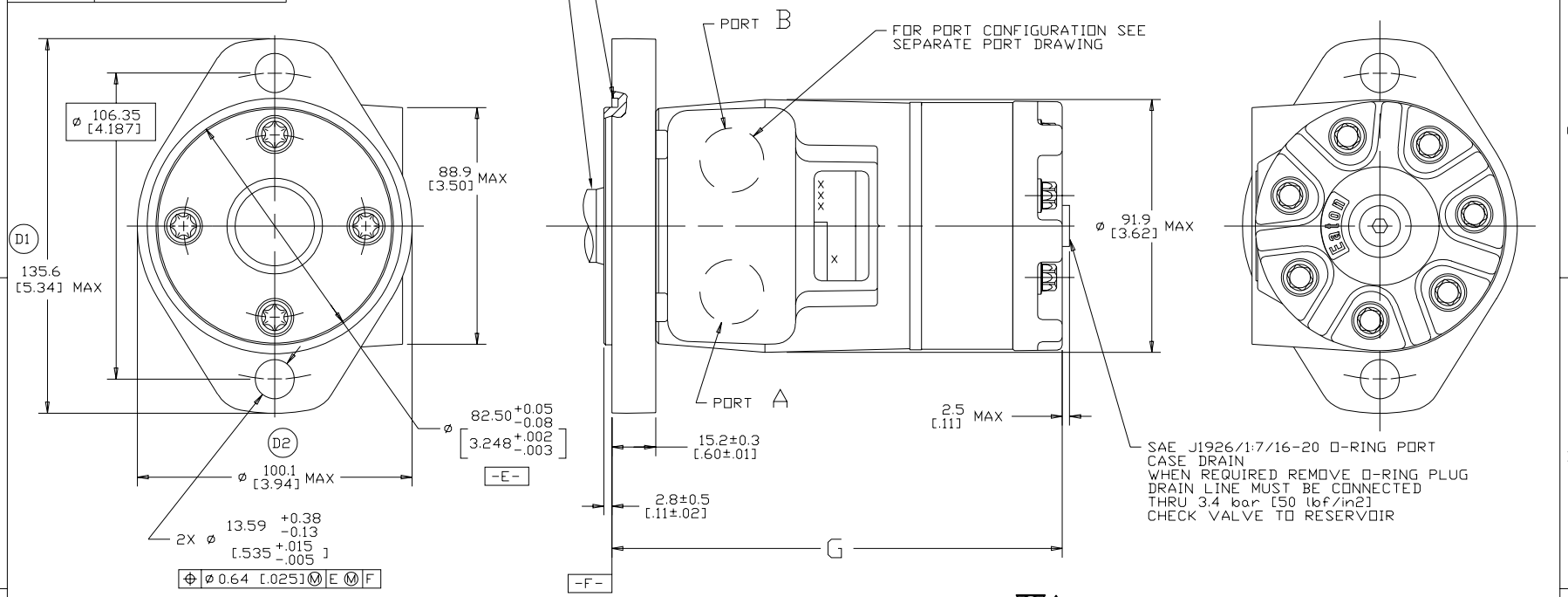
DISPL CODE	G MAX
018	132.2 [5.21]
022	132.2 [5.21]
025	133.1 [5.24]
030	134.6 [5.30]
036	136.4 [5.37]
040	137.6 [5.42]
049	140.2 [5.52]
062	144.2 [5.68]
080	149.6 [5.89]
096	154.4 [6.08]
119	161.2 [6.35]
149	170.2 [6.70]
187	181.6 [7.15]
226	193.3 [7.61]
298	215.0 [8.46]

REV	DESCRIPTION	BY	DATE	ECN
A	ENGINEERING RELEASE	RAF	2-8-94	M11208
B	-1<(3C) 88.9 [3.50] MAX WAS 84.6 [3.33] MAX -2<(2C) Ø 91.9 [3.62] MAX WAS Ø 87.9 [3.46] MAX -3<(2B) ADDED "G" DIMENSION	JMM	10-26-94	26147
C	(4B)Ø13.59+0.38/-0.13 [5.35+.015/-0.005] WAS Ø13.59±0.13 [5.35±0.005]	AGJ	1-28-02	39853
D	-1<(4C) WAS 131.4 [5.17] MAX. -2<(4B) WAS 96.8 [3.81] MAX.	AAK	04-07-04	46856
E	-1<(4D)UPDATED TABLE FOR DISPL CODE -2<(4A)NOTE 2 MOUNTING FLANGE WAS "A"	PM	03-27-07	0004355
F	-1<(4D)UPDATED TABLE FOR DISPL CODE -2<(4C)135.6[5.34] MAX WAS 133.9[5.27]MAX -3<(4B)Ø100.1[3.94]MAX WAS Ø98.3[3.87] MAX -4<(1B)PORT CALLOUT WAS 7/16-20 UNF-2B O-RING PDRT, SIZE 4.....	AAB	04-11-11	M81825
G	(4A)NOTE 3 WAS CASE DRAIN: 1....	SSP	12-26-15	068068.1

FOR SHAFT CONFIGURATION SEE SEPARATE SHAFT DRAWING

FOR PORT CONFIGURATION SEE SEPARATE PORT DRAWING

SAE J1926/1:7/16-20 O-RING PORT CASE DRAIN WHEN REQUIRED REMOVE O-RING PLUG DRAIN LINE MUST BE CONNECTED THRU 3.4 bar [50 lbf/in²] CHECK VALVE TO RESERVOIR



- NOTE
- ROTATION STANDARD WHEN FACING SHAFT END OF MOTOR SHAFT TO ROTATE CLOCKWISE WHEN PORT "A" IS PRESSURIZED COUNTERCLOCKWISE WHEN PORT "B" IS PRESSURIZED REVERSE WHEN FACING SHAFT END OF MOTOR SHAFT TO ROTATE CLOCKWISE WHEN PORT "B" IS PRESSURIZED COUNTERCLOCKWISE WHEN PORT "A" IS PRESSURIZED
 - MOUNTING FLANGE AA = STANDARD, 2 BOLT: Ø 82.6 [3.25] X 3.0 [0.12] PILOT Ø 13.59 [5.35] HOLES DN Ø 106.2 [4.18] BOLT CIRCLE
 - CASE DRAIN 01 = 7/16-20 (END CAP)

REVIEWED FOR CLASSIFICATION PER ESP-042

UNLESS OTHERWISE SPECIFIED ALL DIMENSIONS ARE IN INCHES		DRAWING BASED ON ANSI Y14.5M-1982	
MILLIMETERS (INCHES)	<input type="checkbox"/>	EATON CORPORATION - CONFIDENTIAL AND PROPRIETARY NOTICE TO PERSONS RECEIVING THIS DRAWING AND / OR TECHNICAL INFORMATION	
TOLERANCES	<input type="checkbox"/>	THIS DOCUMENT INCLUDING THE DRAWING AND INFORMATION CONTAINED HEREIN IS CONFIDENTIAL AND IS THE EXCLUSIVE PROPERTY OF EATON CORPORATION, AND IS HEREBY LOANED AND SUBJECT TO REGAL BY EATON AT ANY TIME. BY FACING POSSESSION OF THIS DOCUMENT THE RECIPIENT ACKNOWLEDGES AND AGREES THAT THIS DOCUMENT CANNOT BE COPIED, IN ANY MANNER, ADVISED TO THE INTERESTS OF EATON, AND THAT NO PORTION OF THIS DOCUMENT MAY BE COPIED OR OTHERWISE REPRODUCED WITHOUT THE PRIOR WRITTEN CONSENT OF EATON. IN THE CASE OF COMPULSORY CONTRACTUAL PROVISIONS, THIS NOTICE SHALL GOVERN OVER ANY OTHER NOTICE. © EATON CORPORATION 2008 EATON CORPORATION - ALL RIGHTS RESERVED. USA	
.X ± ---	<input type="checkbox"/>	DRAWN BY/DATE	MATERIAL/HEAT TREAT
.XX ± ---	<input type="checkbox"/>	RAF 2/4/94	---
.XXX ± ---	<input type="checkbox"/>	CHECKED BY/DATE	---
< ± +	<input type="checkbox"/>	SBR 2/28/94	---
UNSPECIFIED RADII ARE:	<input type="checkbox"/>	ENGR BY/DATE	TITLE
---	<input type="checkbox"/>	RVA 3/3/94	---
---	<input type="checkbox"/>	METALLURGY BY/DATE	T MOTOR INSTALLATION
---	<input type="checkbox"/>	---	---
UNSPECIFIED DRAFT ANGLES ARE:	<input type="checkbox"/>	THIRD ANGLE PROJECTION	NUMBER
---	<input type="checkbox"/>	DO NOT SCALE	A-821-003
D SIZE	<input type="checkbox"/>	ARITHMETICAL AVERAGE	SCALE 1/1 SHEET 1 OF 1