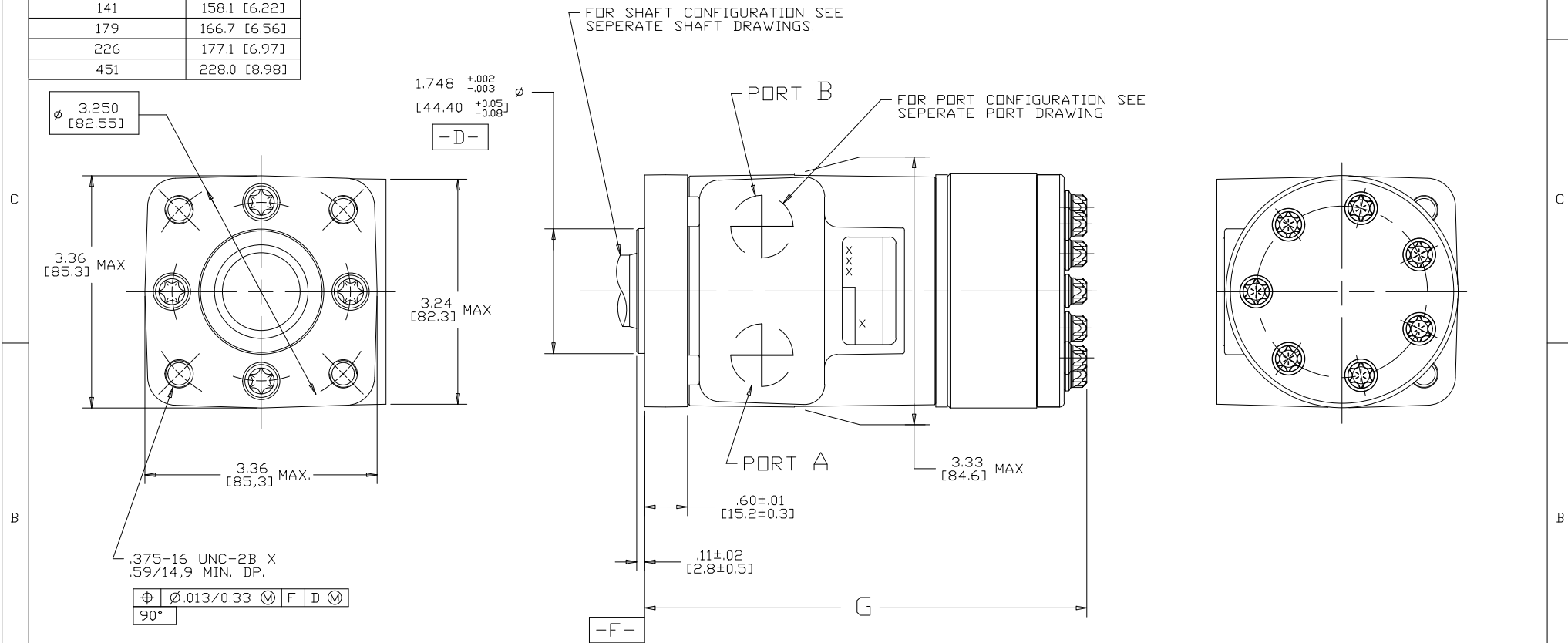


DISPLACEMENT CODE	G MAX
022	132.7 [5.22]
025	133.5 [5.26]
028	132.7 [5.22]
035	136.5 [5.37]
045	136.5 [5.37]
059	139.5 [5.49]
073	142.8 [5.62]
089	146.4 [5.76]
097	148.2 [5.84]
113	151.7 [5.97]
141	158.1 [6.22]
179	166.7 [6.56]
226	177.1 [6.97]
451	228.0 [8.98]

SYM	REVISION	BY	DATE	ECN
A	ENGINEERING RELEASE	RLL	11-10-87	14736
E	REVISED	JMM	9-15-94	25972
F	-1)X4C)WAS 3.28/83,4 MAX -2)X4B)WAS 3.28/83,4 MAX	SJP	04-07-04	46856
G	REVISED	VBH	6-11-09	M76183
H	-1)REVISED PICTORIALY -2)X4D)UPDATED TABULATION FOR G MAX -3)UPDATED NOTE 2 AS PER ESP-022-69	AAB	02-17-14	0054755
J	(1C)ADDED EATON LOGO TO END CAP	AAB	01-22-15	0061684
K	(3A) NOTE 3 WAS CASE DRAIN : 0...	JVD	07-27-15	0065202
L	(1C) REMOVED EATON LOGO	SSD	04-23-21	0131343



**NOTE:**

1. **ROTATION:**  
STANDARD; WHEN FACING SHAFT END OF MOTOR, SHAFT TO ROTATE CLOCKWISE WHEN PORT "A" IS PRESSURIZED. COUNTERCLOCKWISE WHEN PORT "B" IS PRESSURIZED.  
REVERSE ; WHEN FACING SHAFT END OF MOTOR, SHAFT TO ROTATE CLOCKWISE WHEN PORT "B" IS PRESSURIZED. COUNTERCLOCKWISE WHEN PORT "A" IS PRESSURIZED.

2. **MOUNTING FLANGE:**  
BA = 4 BOLT STD: 44.40 [1.748] DIA. X 3.05 [1.20] PILDOT,  
.375-16 MOUNTING HOLES DN 82.55 [3.250] DIA. B.C.

3. **CASE DRAIN:**  
00 = NO CASE DRAIN

**REVIEWED FOR CLASSIFICATION PER ESP-042**

**DRAWING BASED ON ANSI Y14.5M-1982**

UNLESS OTHERWISE SPECIFIED ALL DIMENSIONS ARE IN INCHES  (MILLIMETERS)

**TOLERANCES**  
.X ± ---  
.XX ± REF  
.XXX ± ONLY  
∠ ± ---°

UNSPECIFIED RADII ARE: ---  
METALLURGY BY/DATE: ---

UNSPECIFIED DRAFT ANGLES ARE: ---°

C SIZE

THIRD ANGLE PROJECTION

DO NOT SCALE

ARITHMETICAL AVERAGE

DRAWN RLL BY/DATE 10-22-87  
CHECKED KQ BY/DATE 1-18-88  
ENGR WCW BY/DATE 1-18-88  
METALLURGY BY/DATE: ---

MATERIAL/HEAT TREAT: ---

TITLE: H MOTOR INSTALLATION

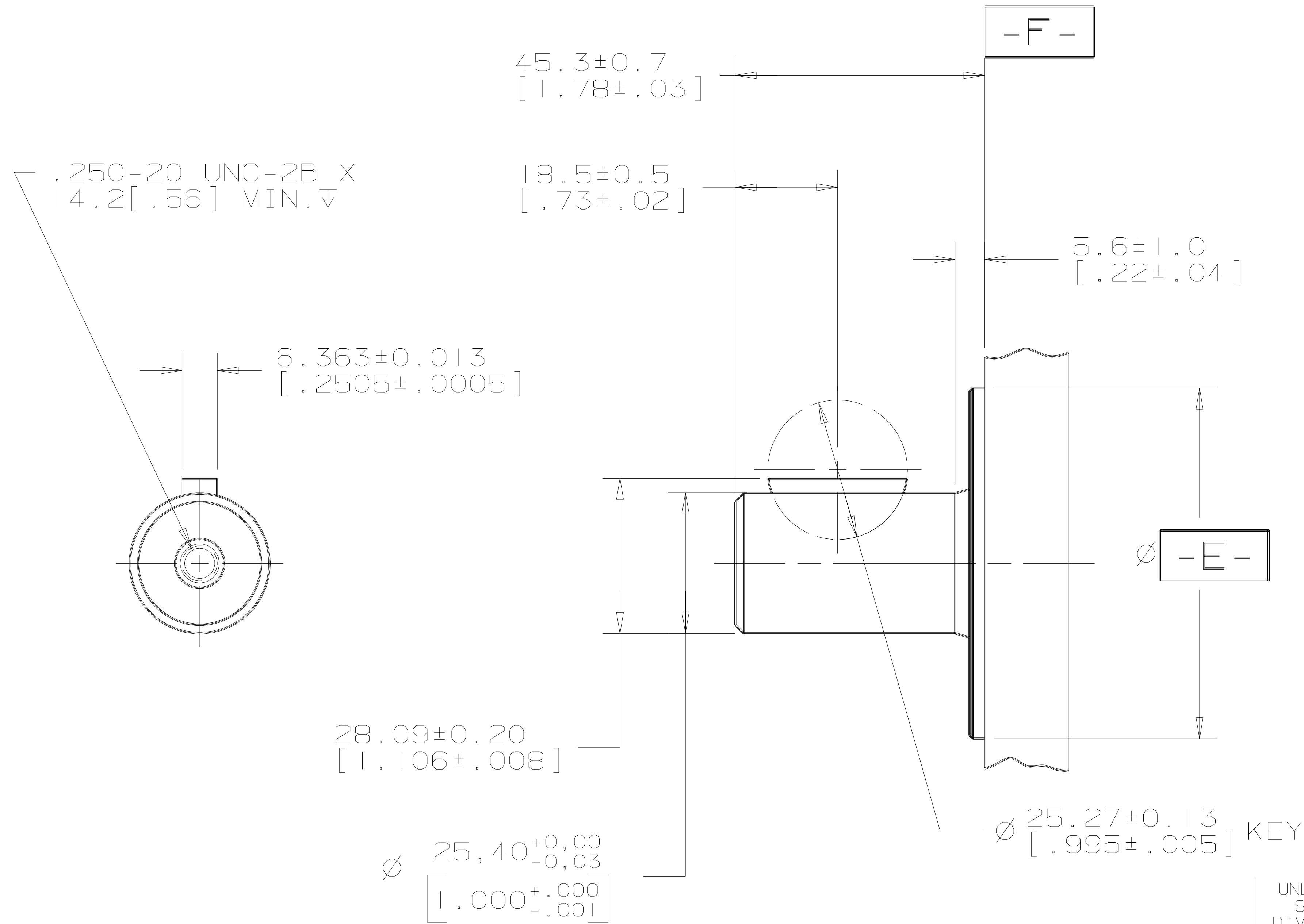
NUMBER: A-37-316

SCALE: 1/1 SHEET: 1 OF 1

**EATON**  
Powering Business Worldwide  
Eaton Hydraulics LLC  
14615 Lorne Dale Road  
Eaton, Prairie, MN 55344  
USA

THIS DOCUMENT INCLUDING THE DRAWING AND INFORMATION CONTAINED THEREIN IS CONFIDENTIAL AND IS THE EXCLUSIVE PROPERTY OF EATON CORPORATION AND IS HEREBY LOANED AND SUBJECT TO BE HELD BY EATON BY ANY TYPE OF TRADING OR OTHERWISE. IT IS NOT TO BE REPRODUCED, COPIED, EITHER WHOLLY OR IN PART, OR FOR ANY PURPOSE, WITHOUT THE WRITTEN PERMISSION OF EATON CORPORATION. THIS NOTICE SHALL GOVERN IN THE EVENT OF CONFLICTING PROVISIONS. ALL RIGHTS RESERVED. COPYRIGHT 2008 EATON CORPORATION.

REV	DESCRIPTION	BY	CHK	DATE	ECN / MPS
A	ENGINEERING RELEASE	RLL		11-10-87	14736
C	REVISED	SSD		10-15-09	M77165



OUTPUT SHAFT

01 = Ø25.4 [1.00] STRAIGHT WITH WOODRUFF KEY AND .250-20 THREADED HOLE

⊙	Ø0.26 [.010]	E
⊥	0.08 [.003]	F

UNLESS OTHERWISE SPECIFIED ALL DIMENSIONS ARE IN INCHES  MILLIMETERS

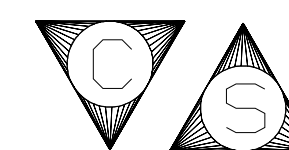
TOLERANCES

.X	±	---
.XX	±	---
.XXX	±	---
∅	±	---°

UNSPECIFIED RADII ARE: -----

UNSPECIFIED DRAFT ANGLES ARE: -----°

B SIZE



REVIEWED FOR CLASSIFICATION PER ESP-042

DRAWING BASED ON ANSI Y14.5M-1982

EATON CORPORATION - CONFIDENTIAL AND PROPRIETARY  
NOTICE TO PERSONS RECEIVING THIS DRAWING  
AND / OR TECHNICAL INFORMATION

THIS DOCUMENT, INCLUDING THE DRAWING AND INFORMATION CONTAINED THEREON, IS CONFIDENTIAL AND IS THE EXCLUSIVE PROPERTY OF EATON CORPORATION, AND IS MERELY ON LOAN AND SUBJECT TO RECALL BY EATON AT ANY TIME. BY TAKING POSSESSION OF THIS DOCUMENT, THE RECIPIENT ACKNOWLEDGES AND AGREES THAT THIS DOCUMENT CANNOT BE USED IN ANY MANNER ADVERSE TO THE INTERESTS OF EATON, AND THAT NO PORTION OF THIS DOCUMENT MAY BE COPIED OR OTHERWISE REPRODUCED WITHOUT THE PRIOR WRITTEN CONSENT OF EATON. IN THE CASE OF CONFLICTING CONTRACTUAL PROVISIONS, THIS NOTICE SHALL GOVERN THE STATUS OF THIS DOCUMENT. COPYRIGHT 2008 EATON CORPORATION - ALL RIGHTS RESERVED.



DRAWN RLL  
BY/DATE 10-28-87

CHECKED -  
BY/DATE -

ENGRG -  
BY/DATE -

METALLURGY -----  
BY/DATE -----

MATERIAL/HEAT TREAT

TITLE

SHAFT INSTALLATION

THIRD ANGLE PROJECTION

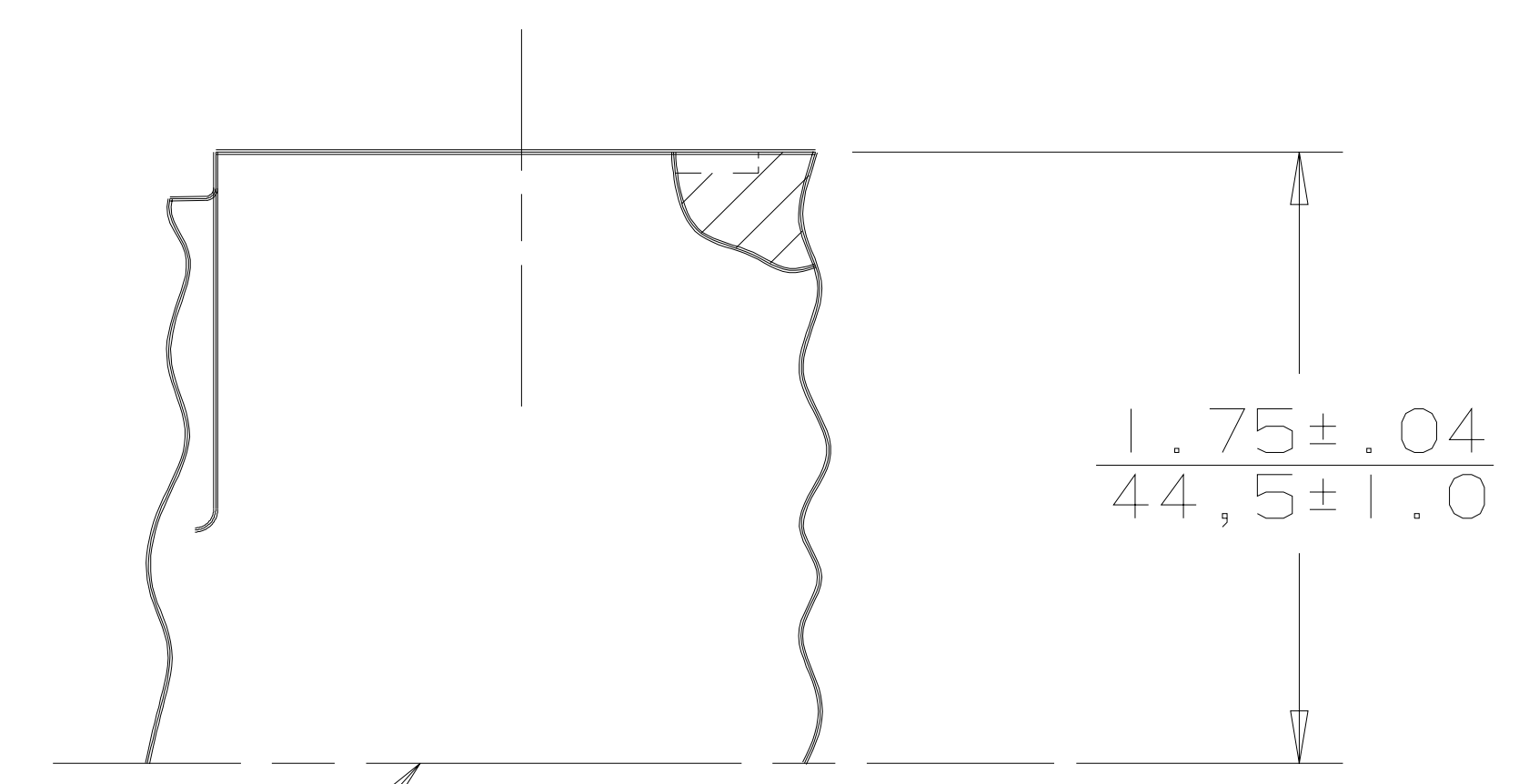
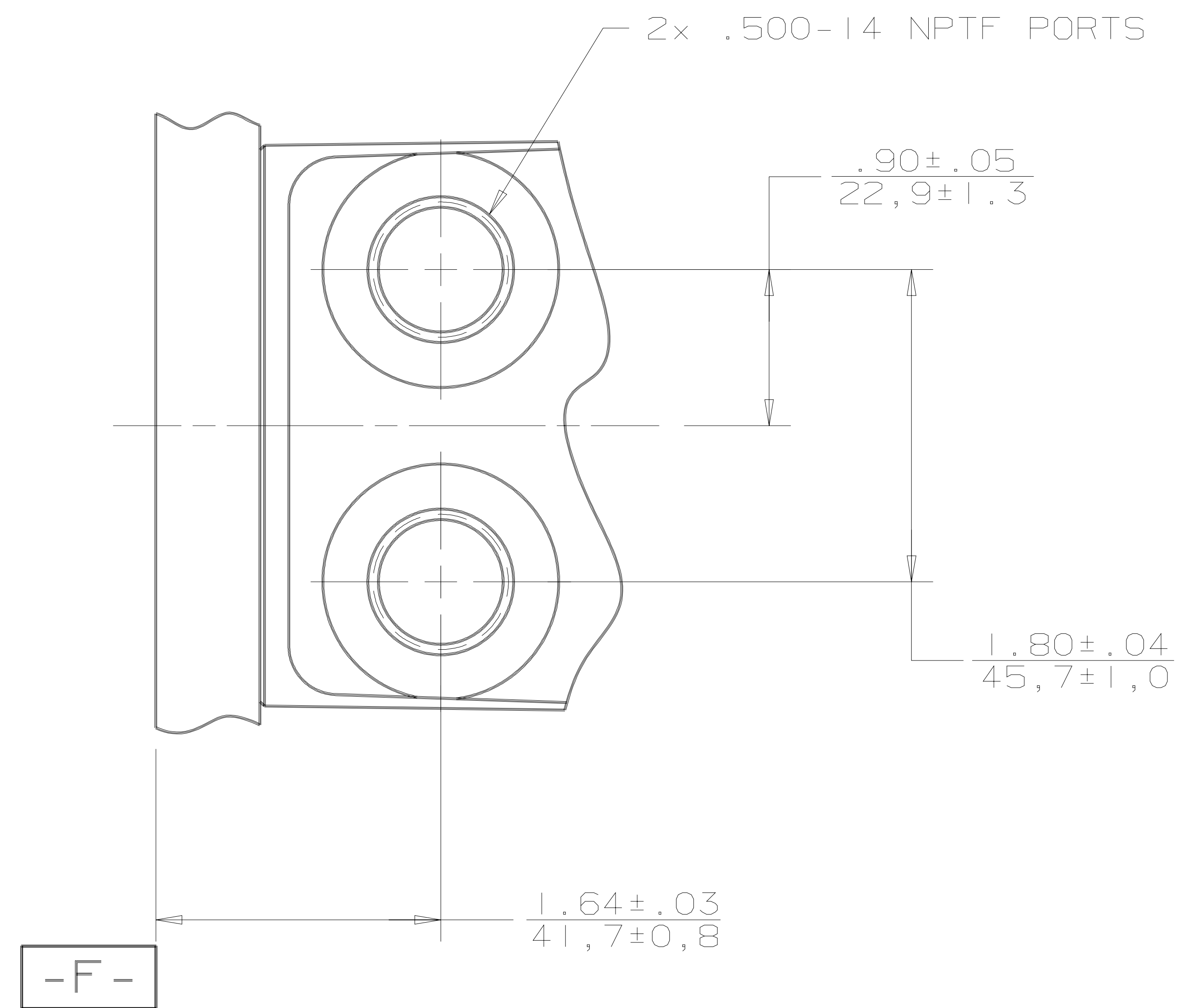
DO NOT SCALE

MICROINCHES   
MICROMETERS   
[MICROINCHES]   
ARITHMETICAL AVERAGE

NUMBER  
A-109-001

SCALE 1/1 SHEET 1 OF 1

SYM	REVISION	BY	DATE	ECN
A	ENGINEERING RELEASE	DK	11-10-87	14736
C	REVISED FOR ASSY STACK UP	SKS	08-06-09	M76593



MOTOR CENTERLINE

PORT TYPE  
AB = .500-14 NPTF

<p>NOTICE TO PERSONS RECEIVING THIS DRAWING AND / OR TECHNICAL INFORMATION</p> <p><small>THIS DOCUMENT, INCLUDING THE DRAWING AND INFORMATION CONTAINED THEREON, IS CONFIDENTIAL AND IS THE EXCLUSIVE PROPERTY OF EATON CORPORATION, AND IS MERELY ON LOAN AND SUBJECT TO RECALL BY EATON AT ANY TIME. BY TAKING POSSESSION OF THIS DOCUMENT, THE RECIPIENT ACKNOWLEDGES AND AGREES THAT THIS DOCUMENT CANNOT BE USED IN ANY MANNER ADVERSE TO THE INTERESTS OF EATON, AND THAT NO PORTION OF THIS DOCUMENT MAY BE COPIED OR OTHERWISE REPRODUCED WITHOUT THE PRIOR WRITTEN CONSENT OF EATON. IN THE CASE OF CONFLICTING CONTRACTUAL PROVISIONS, THIS NOTICE SHALL GOVERN THE STATUS OF THIS DOCUMENT.</small></p>		<p>Eaton Corporation Hydraulics Division 15151 Highway 5 Eden Prairie, Mn. 55344</p>
<p>DRAWN BY/DATE: DK 11-13-87</p>	<p>MATERIAL/HEAT TREAT</p>	
<p>CHECKED BY/DATE</p>	<p>TITLE: PORT INSTALLATION</p>	
<p>ENGRG BY/DATE</p>	<p>DO NOT SCALE</p>	
<p>THIRD ANGLE PROJECTION</p>	<p>LINEAR MEASUREMENT IN/MM</p> <p>IN / MM</p>	<p>NUMBER: A-110-002</p>
<p>SCALE: FULL SIZE</p>		<p>SHEET 1 OF 1</p>