

Italgroup[®]

HYDRAULIC MOTORS

ITALY



IAM

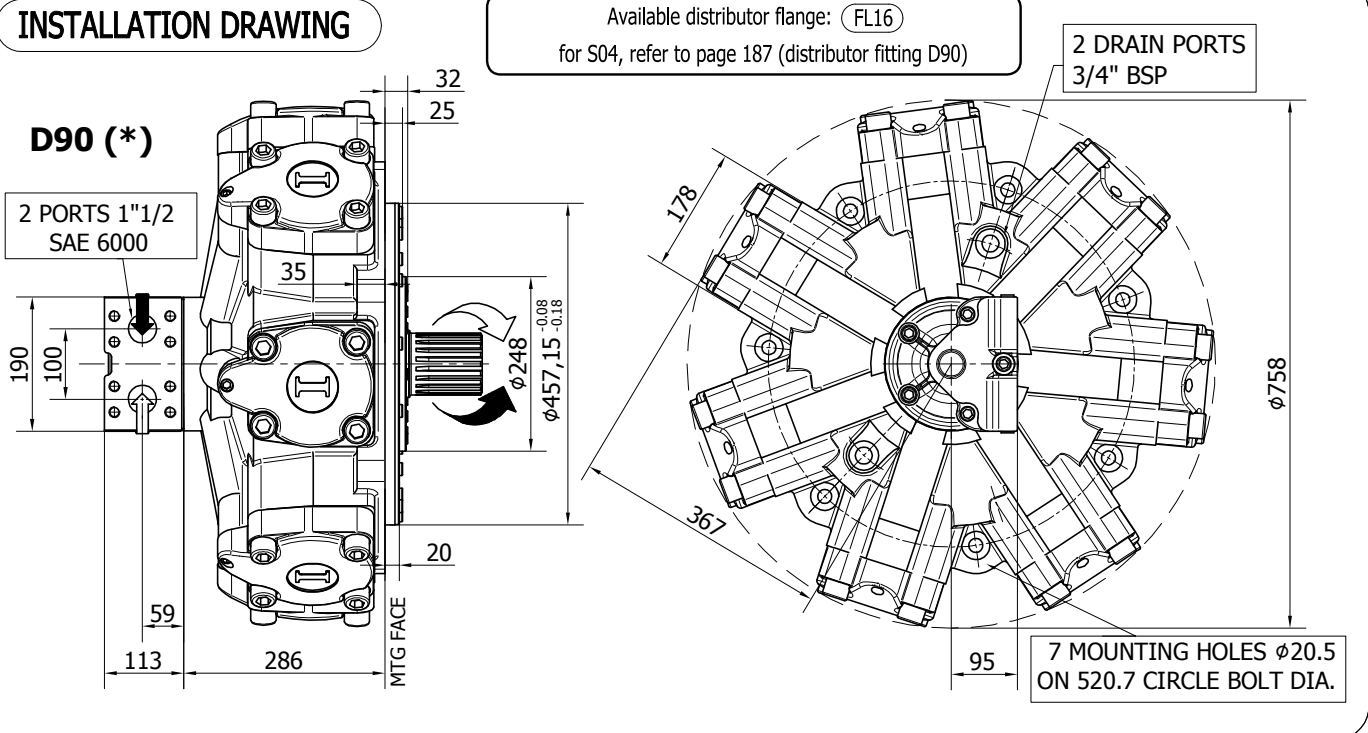
Single displacement hydraulic motors

ITALGROUP SRL
IAM SERIES - IAM H7
GENERAL CATALOGUE

INDEX - IAM H7

<u>IAM H7 - INSTALLATION DRAWINGS</u>	Pag	162 - 164
<u>IAM H7/C - INSTALLATION DRAWINGS</u>	"	166 - 167
<u>IAM H7/RM - INSTALLATION DRAWINGS</u>	"	168 - 169
<u>IAM H7 - PERFORMANCE DIAGRAMS</u>	"	170 - 174
<u>IAM H7 - ORDERING CODE</u>	"	175

INSTALLATION DRAWING



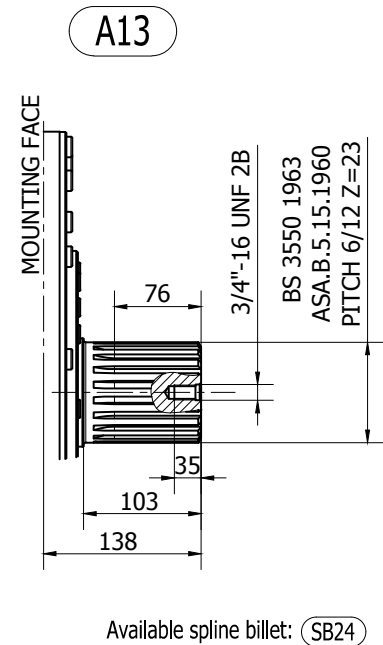
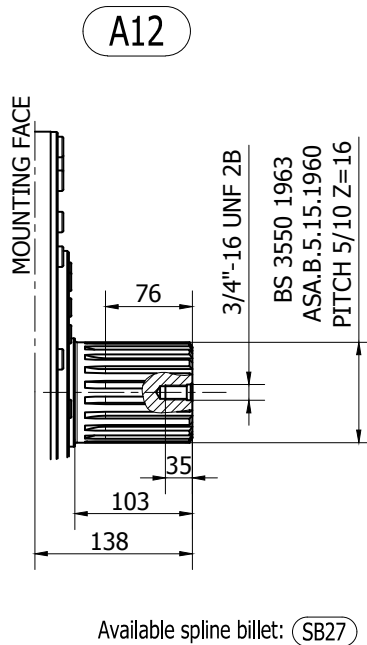
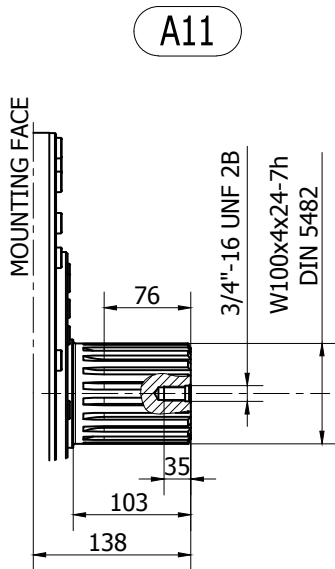
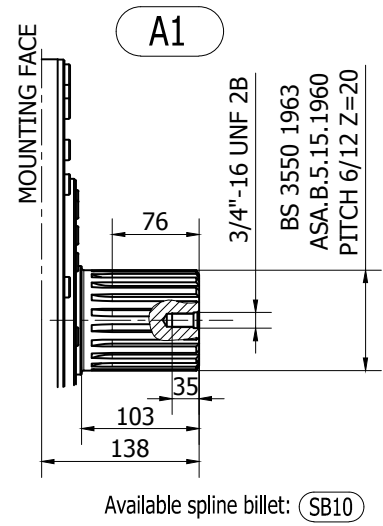
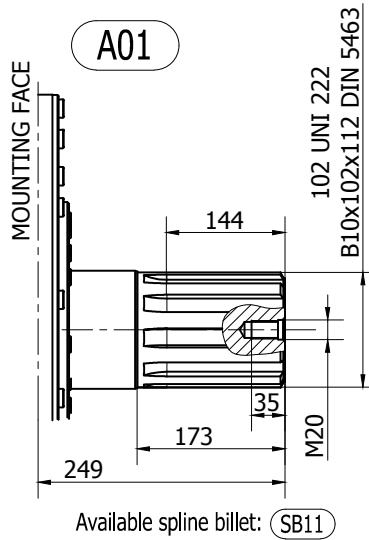
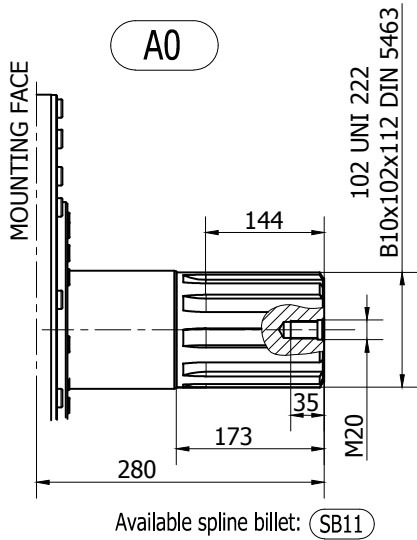
TECHNICAL DATA

		3400	3600	3900	4300	4600	5000	5400
DISPLACEMENT	[cc]	3413	3650	3907	4343	4616	5088	5384
SPECIFIC TORQUE	[Nm/bar]	54.3	58.1	62.2	69.1	73.5	81.0	85.7
MAX. CONT. PRESSURE	[bar]	250	250	250	250	250	250	250
HYDROSTATIC TEST PRESSURE	[bar]	420	420	420	420	420	420	420
MAX. CONT. SPEED	[rpm]	180	170	160	150	140	140	130
PEAK SPEED (***)	[rpm]	220	200	200	190	190	180	170
MAX. CONT. POWER (****)	[kW]	130	130	130	130	130	130	130
MAX. POWER	[kW]	180	180	180	180	180	180	180
MAX. CASE PRESSURE	[bar]	6	6	6	6	6	6	6
DRY WEIGHT	[kg]	405	405	405	405	405	405	405
TEMPERATURE RANGE (**)	[°C]	-30÷70	-30÷70	-30÷70	-30÷70	-30÷70	-30÷70	-30÷70

- (*) The standard distributor (D90) is shown.
- (**) Please refer to the hydraulic fluid recommendations (pag. 10-11).
- (***) Do not exceed maximum power (see pag. 13).
- (****) For motor operation with a continuous duty cycle at maximum continuous power the flushing is usually required. For more information please contact our technical department.

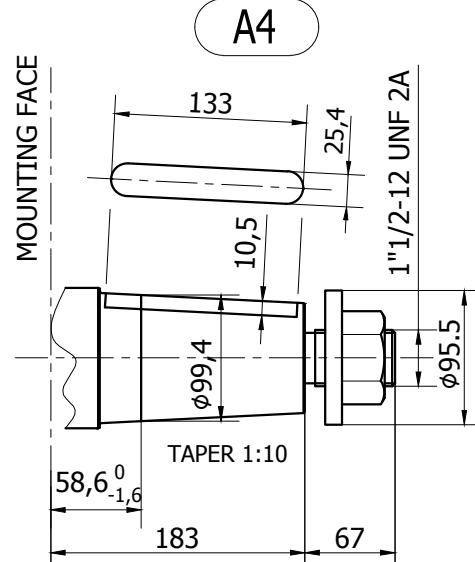
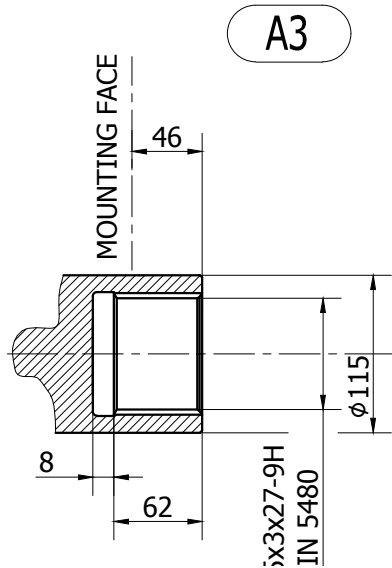
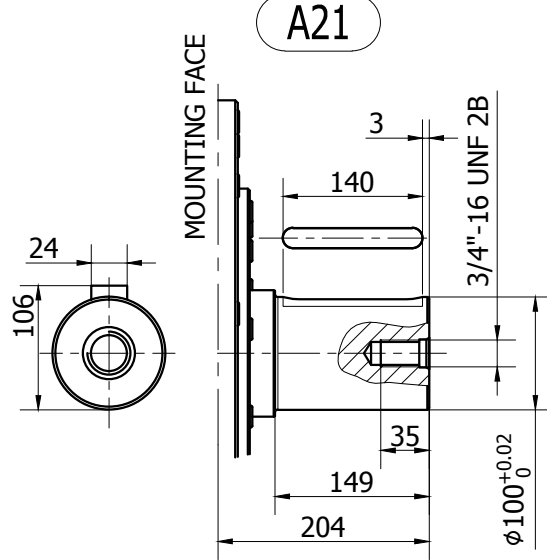
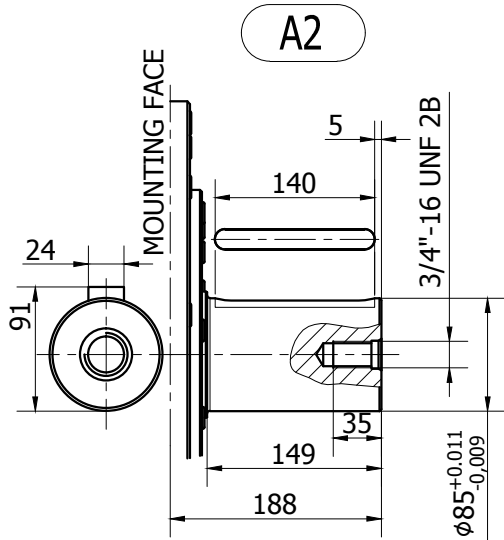
The data specified into the catalogue are for product description purpose only and must not be interpreted as warranted characteristics in legal sense. Italgrou S.r.l. reserves the right to implement modifications without notice. All partial or total reproduction and copy without written authorization of Italgrou S.r.l. is strictly forbidden.

SHAFT CONFIGURATIONS

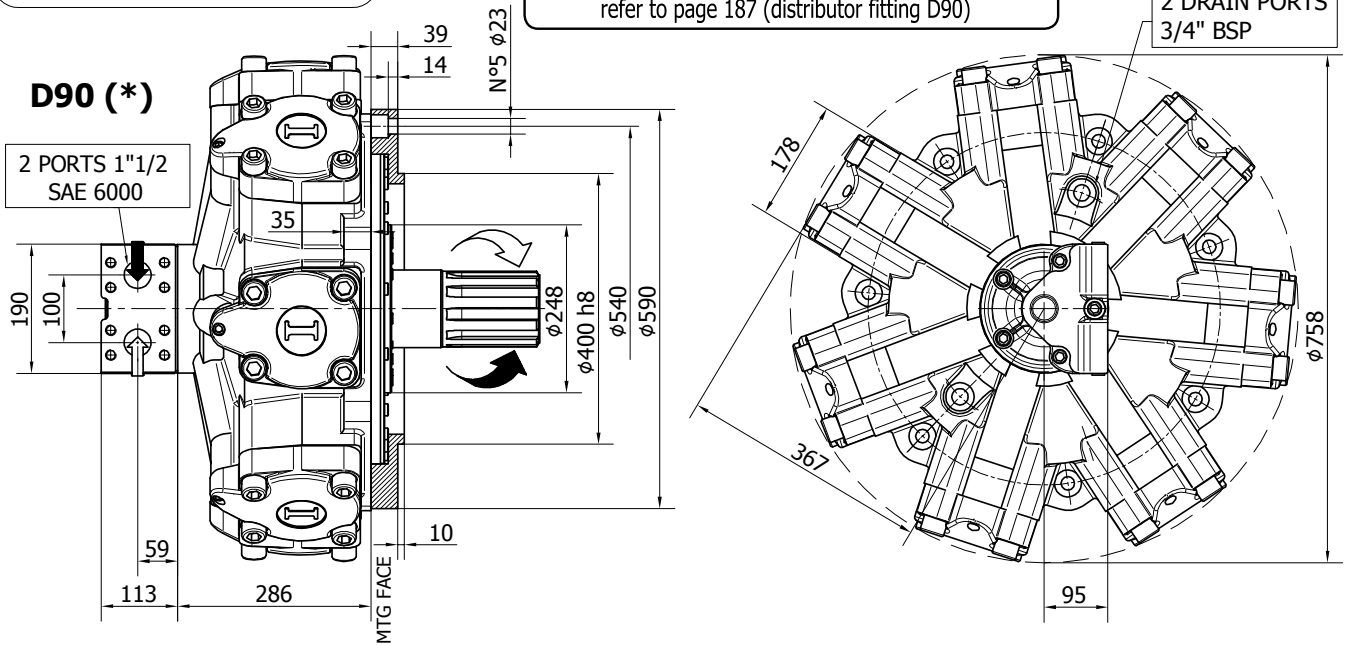


The data specified into the catalogue are for product description purpose only and must not be interpreted as warranted characteristics in legal sense. ItalgrouP S.r.l. reserves the right to implement modifications without notice. All partial or total reproduction and copy without written authorization of ItalgrouP S.r.l. is strictly forbidden.

SHAFT CONFIGURATIONS



INSTALLATION DRAWING



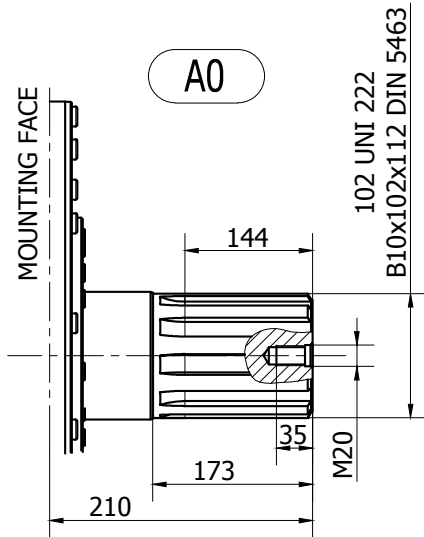
TECHNICAL DATA

		3400	3600	3900	4300	4600	5000	5400
DISPLACEMENT	[cc]	3413	3650	3907	4343	4616	5088	5384
SPECIFIC TORQUE	[Nm/bar]	54.3	58.1	62.2	69.1	73.5	81.0	85.7
MAX. CONT. PRESSURE	[bar]	250	250	250	250	250	250	250
HYDROSTATIC TEST PRES-SURE	[bar]	420	420	420	420	420	420	420
MAX. CONT. SPEED	[rpm]	180	170	160	150	140	140	130
PEAK SPEED (***)	[rpm]	220	200	200	190	190	180	170
MAX. CONT. POWER (****)	[kW]	130	130	130	130	130	130	130
MAX. POWER	[kW]	180	180	180	180	180	180	180
MAX. CASE PRESSURE	[bar]	6	6	6	6	6	6	6
DRY WEIGHT	[kg]	405	405	405	405	405	405	405
TEMPERATURE RANGE (**)	[°C]	-30÷70	-30÷70	-30÷70	-30÷70	-30÷70	-30÷70	-30÷70

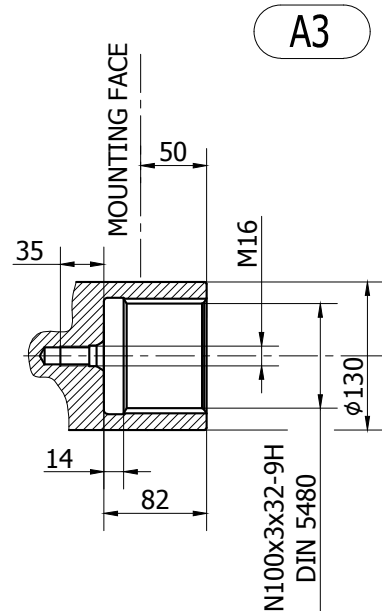
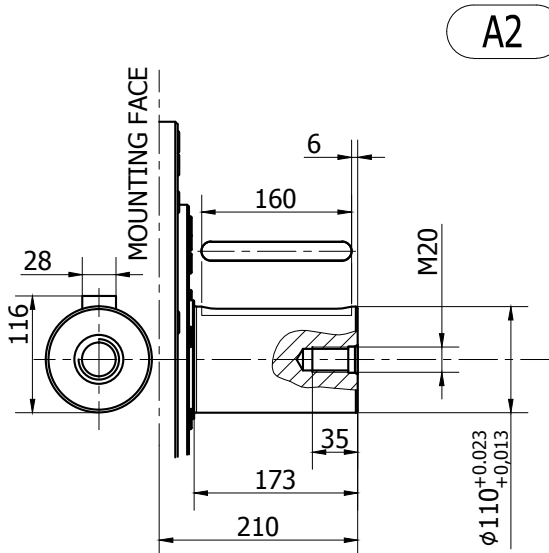
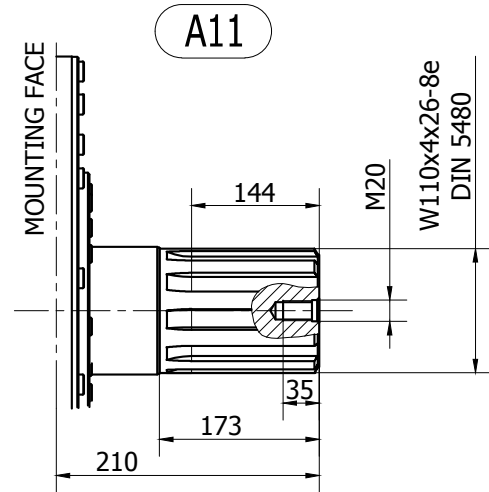
- (*) The standard distributor (D90) is shown.
- (**) Please refer to the hydraulic fluid recommendations (pag. 10-11).
- (***) Do not exceed maximum power (see pag. 13).
- (****) For motor operation with a continuous duty cycle at maximum continuous power the flushing is usually required. For more information please contact our technical department.

The data specified into the catalogue are for product description purpose only and must not be interpreted as warranted characteristics in legal sense. Italgrou S.r.l. reserves the right to implement modifications without notice. All partial or total reproduction and copy without written authorization of Italgrou S.r.l. is strictly forbidden.

SHAFT CONFIGURATIONS

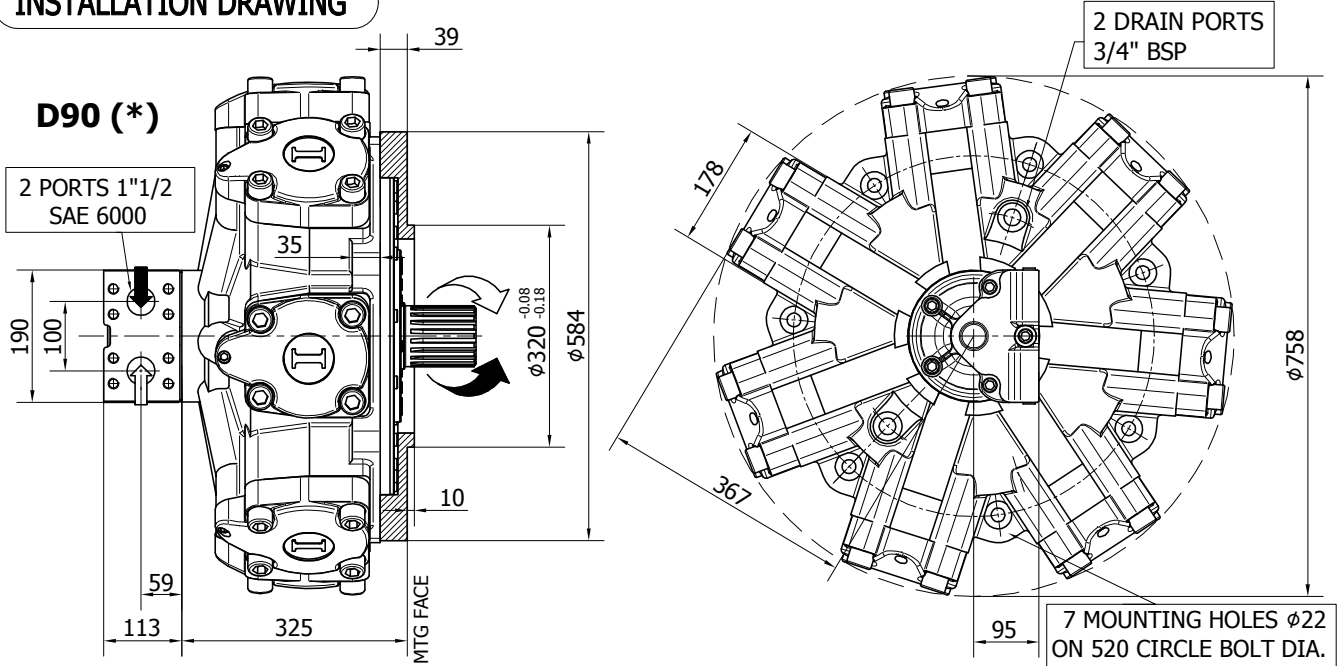


Available spline billet: (SB11)



The data specified into the catalogue are for product description purpose only and must not be interpreted as warranted characteristics in legal sense. Italgrou S.r.l. reserves the right to implement modifications without notice. All partial or total reproduction and copy without written authorization of Italgrou S.r.l. is strictly forbidden.

INSTALLATION DRAWING



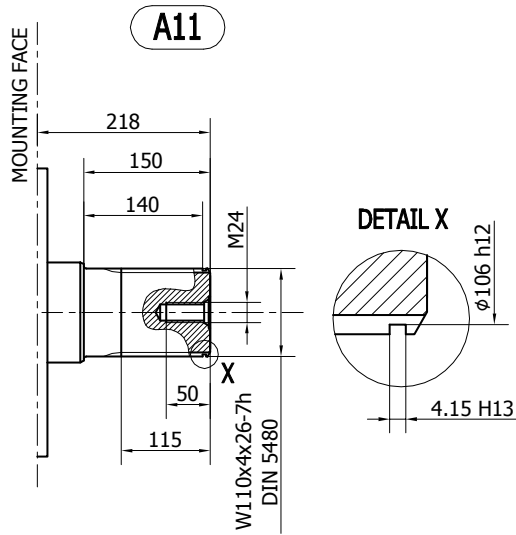
TECHNICAL DATA

		3400	3600	3900	4300	4600	5000	5400
DISPLACEMENT	[cc]	3413	3650	3907	4343	4616	5088	5384
SPECIFIC TORQUE	[Nm/bar]	54.3	58.1	62.2	69.1	73.5	81.0	85.7
MAX. CONT. PRESSURE	[bar]	250	250	250	250	250	250	250
HYDROSTATIC TEST PRESSURE	[bar]	420	420	420	420	420	420	420
MAX. CONT. SPEED	[rpm]	180	170	160	150	140	140	130
PEAK SPEED (***)	[rpm]	220	200	200	190	190	180	170
MAX. CONT. POWER (****)	[kW]	130	130	130	130	130	130	130
MAX. POWER	[kW]	180	180	180	180	180	180	180
MAX. CASE PRESSURE	[bar]	6	6	6	6	6	6	6
DRY WEIGHT	[kg]	405	405	405	405	405	405	405
TEMPERATURE RANGE (**)	[°C]	-30÷70	-30÷70	-30÷70	-30÷70	-30÷70	-30÷70	-30÷70

- (*) The standard distributor (D90) is shown.
- (**) Please refer to the hydraulic fluid recommendations (pag. 10-11).
- (***) Do not exceed maximum power (see pag. 13).
- (****) For motor operation with a continuous duty cycle at maximum continuous power the flushing is usually required. For more information please contact our technical department.

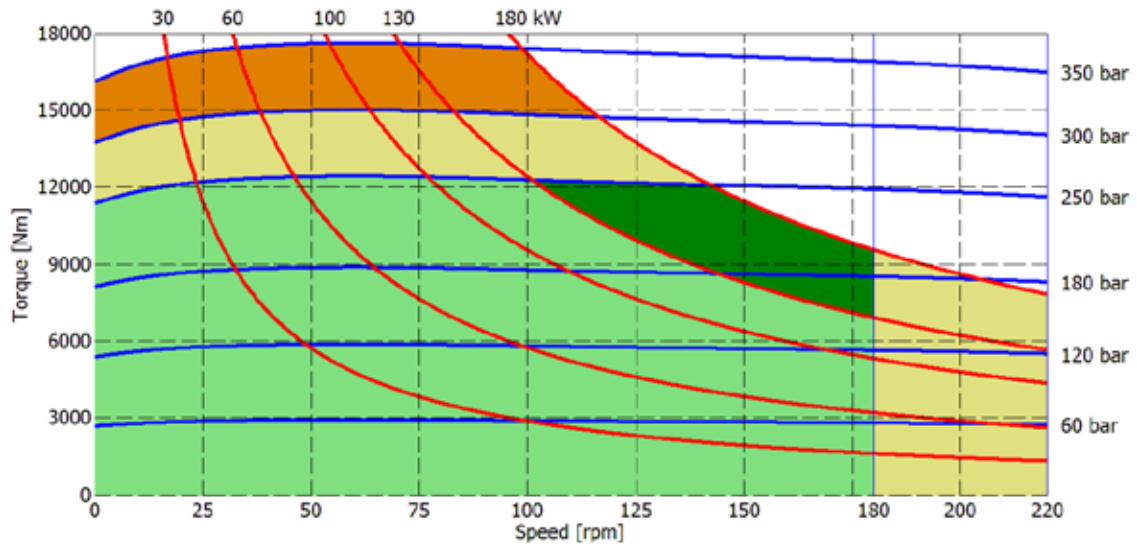
The data specified into the catalogue are for product description purpose only and must not be interpreted as warranted characteristics in legal sense. Italgroup S.r.l. reserves the right to implement modifications without notice. All partial or total reproduction and copy without written authorization of Italgroup S.r.l. is strictly forbidden.

SHAFT CONFIGURATIONS

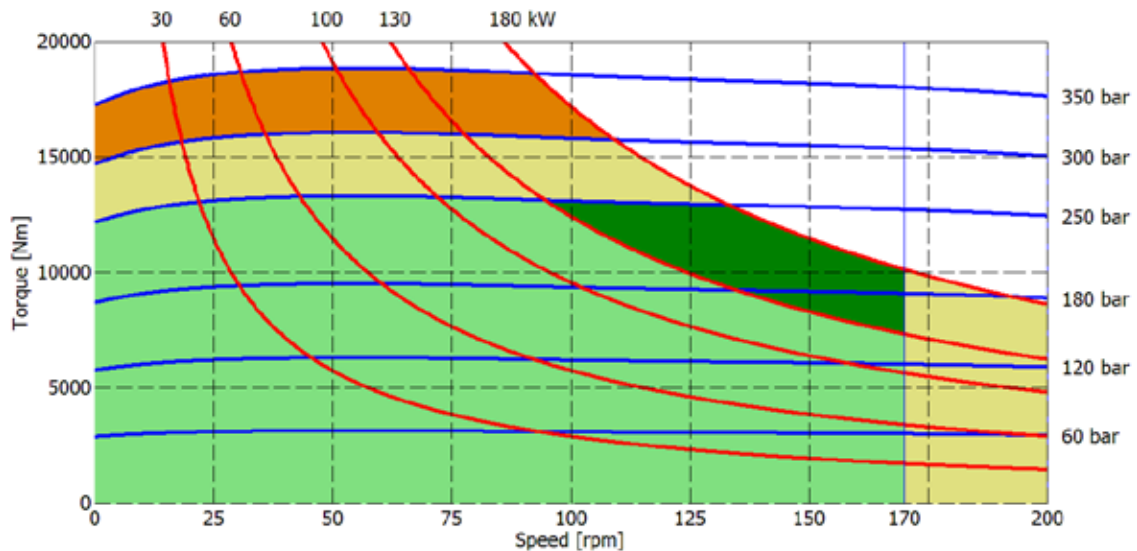


IAM H7 - PERFORMANCE DIAGRAMS

3400 cc



3600 cc



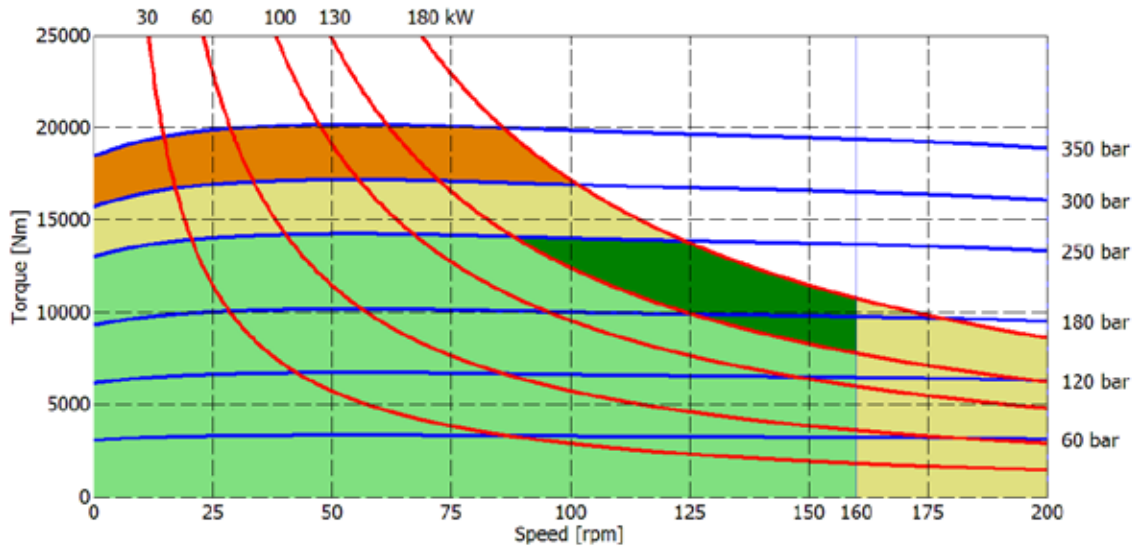
- Continuous operation
- Continuous operation with flushing or intermittent operation (see below for intermittent operation)
- Intermittent operation: permitted for a 15% of duty cycle, for 3 minutes maximum period
- Peak operation: permitted for very short periods (3-5 seconds every 10-15 minutes)

The above diagrams are referring to the hydraulic motor working with a fluid in ideal conditions (viscosity at 40 cSt). In case the working temperature increases and viscosity reach values under the recommended values (see hydraulic fluid recommendations) flushing must be performed or ISO oil grade must be changed. The working temperature must not overcome 70 °C.

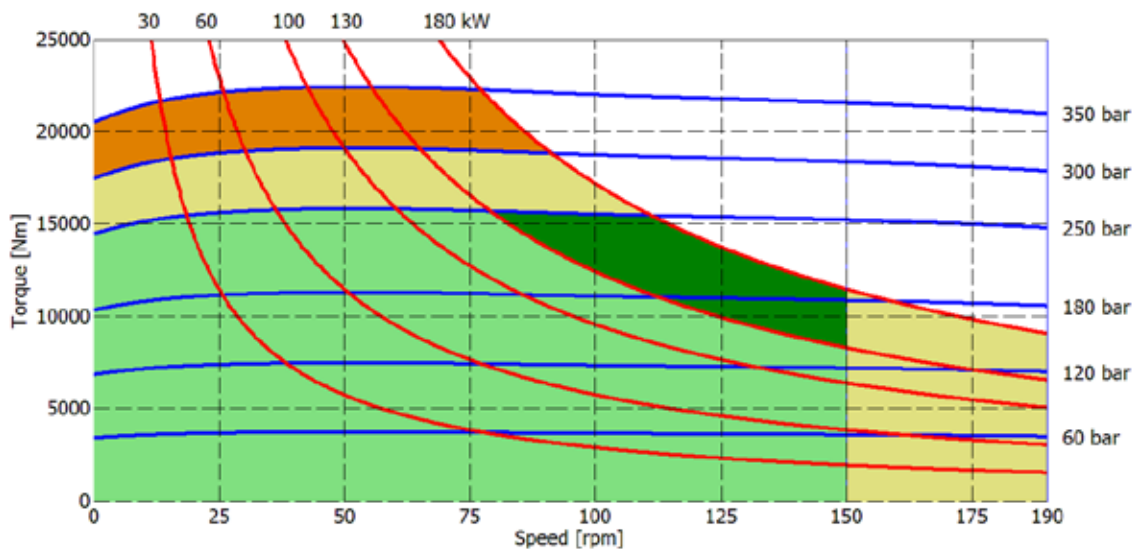
The data specified into the catalogue are for product description purpose only and must not be interpreted as warranted characteristics in legal sense. Italgrou S.r.l. reserves the right to implement modifications without notice. All partial or total reproduction and copy without written authorization of Italgrou S.r.l. is strictly forbidden.

IAM H7 - PERFORMANCE DIAGRAMS

3900 cc



4300 cc



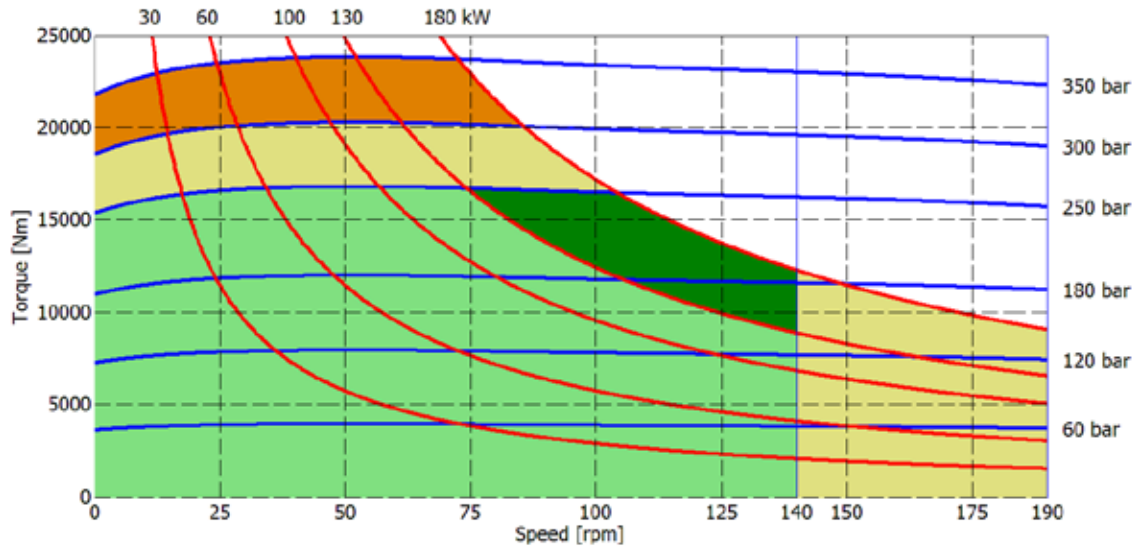
- Continuous operation
- Continuous operation with flushing or intermittent operation (see below for intermittent operation)
- Intermittent operation: permitted for a 15% of duty cycle, for 3 minutes maximum period
- Peak operation: permitted for very short periods (3-5 seconds every 10-15 minutes)

The above diagrams are referring to the hydraulic motor working with a fluid in ideal conditions (viscosity at 40 cSt). In case the working temperature increases and viscosity reach values under the recommended values (see hydraulic fluid recommendations) flushing must be performed or ISO oil grade must be changed. The working temperature must not overcome 70 °C.

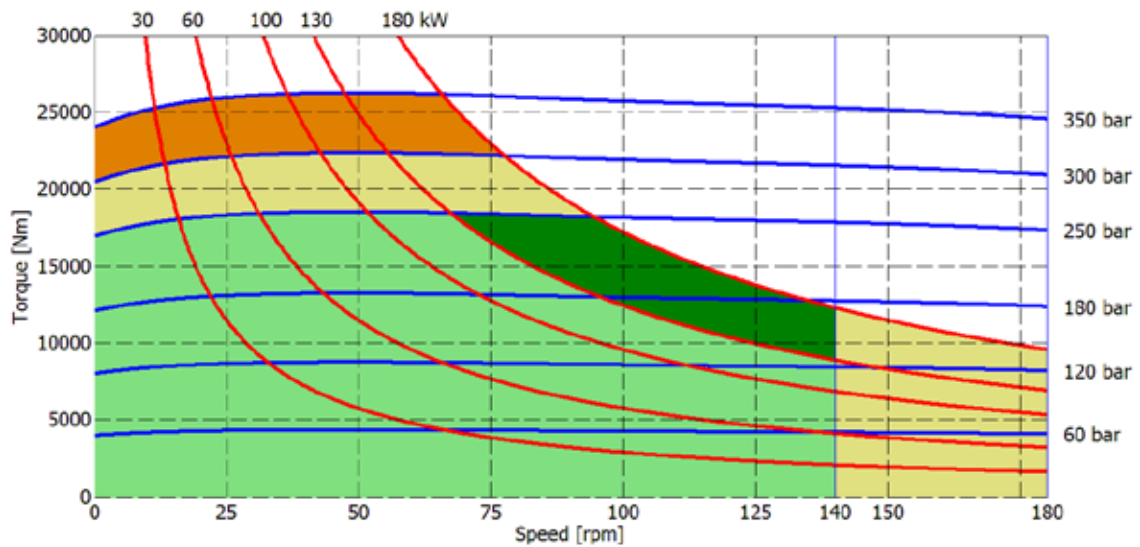
The data specified into the catalogue are for product description purpose only and must not be interpreted as warranted characteristics in legal sense. ItalgrouP S.r.l. reserves the right to implement modifications without notice. All partial or total reproduction and copy without written authorization of ItalgrouP S.r.l. is strictly forbidden.

IAM H7 - PERFORMANCE DIAGRAMS

4600 cc



5000 cc



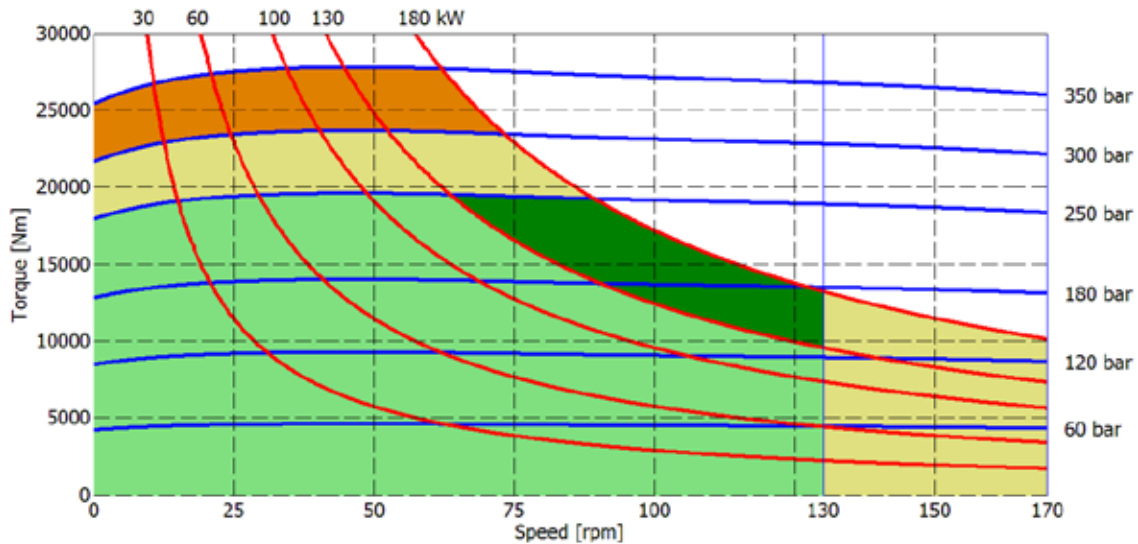
- Continuous operation
- Continuous operation with flushing or intermittent operation (see below for intermittent operation)
- Intermittent operation: permitted for a 15% of duty cycle, for 3 minutes maximum period
- Peak operation: permitted for very short periods (3-5 seconds every 10-15 minutes)

The above diagrams are referring to the hydraulic motor working with a fluid in ideal conditions (viscosity at 40 cSt). In case the working temperature increases and viscosity reach values under the recommended values (see hydraulic fluid recommendations) flushing must be performed or ISO oil grade must be changed. The working temperature must not overcome 70 °C.

The data specified into the catalogue are for product description purpose only and must not be interpreted as warranted characteristics in legal sense. Italgrou S.r.l. reserves the right to implement modifications without notice. All partial or total reproduction and copy without written authorization of Italgrou S.r.l. is strictly forbidden.

IAM H7 - PERFORMANCE DIAGRAMS

5400 cc



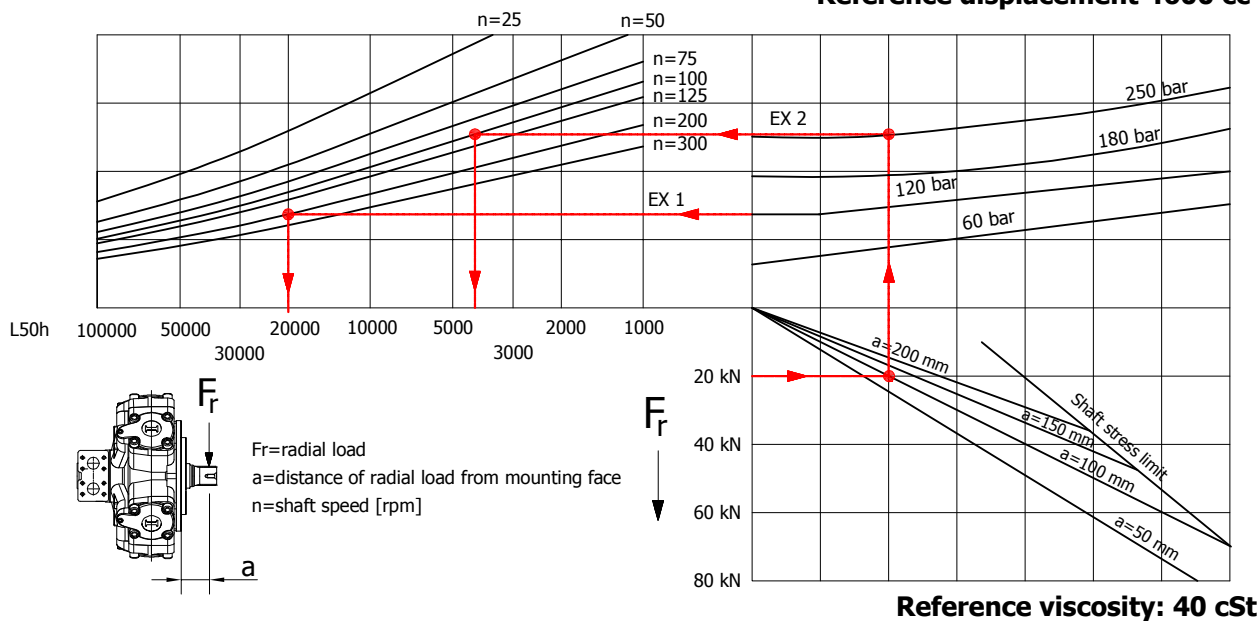
- Continuous operation
- Continuous operation with flushing or intermittent operation (see below for intermittent operation)
- Intermittent operation: permitted for a 15% of duty cycle, for 3 minutes maximum period
- Peak operation: permitted for very short periods (3-5 seconds every 10-15 minutes)

The above diagrams are referring to the hydraulic motor working with a fluid in ideal conditions (viscosity at 40 cSt). In case the working temperature increases and viscosity reach values under the recommended values (see hydraulic fluid recommendations) flushing must be performed or ISO oil grade must be changed. The working temperature must not overcome 70 °C.

The data specified into the catalogue are for product description purpose only and must not be interpreted as warranted characteristics in legal sense. Italgrou S.r.l. reserves the right to implement modifications without notice. All partial or total reproduction and copy without written authorization of Italgrou S.r.l. is strictly forbidden.

BEARING LIFE

Reference displacement 4600 cc



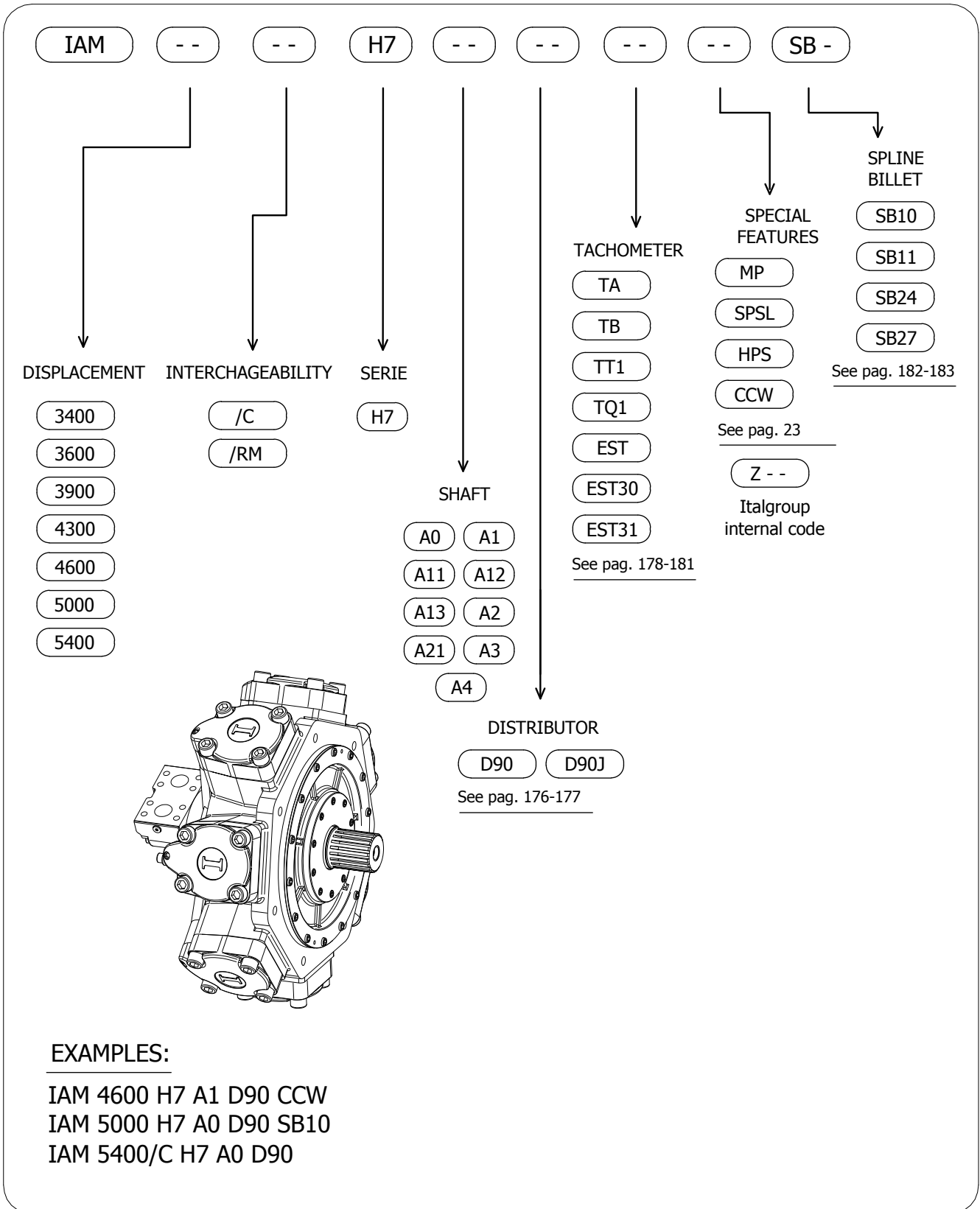
Example:

We suppose (EX1): $p=120$ [bar], $n=200$ [rpm]; we obtain an average lifetime of 20000 [h].

If we suppose (EX2): $F_r=20$ [kN], $a=100$ [mm], $n=100$ [rpm] and $p=250$ [bar] we obtain an average lifetime of 4000 [h].

The above data are referring to the IAM H7 series motors, displacement 4600 cc.

IAM H7 - ORDERING CODE



The data specified into the catalogue are for product description purpose only and must not be interpreted as warranted characteristics in legal sense. Italgroup S.r.l. reserves the right to implement modifications without notice. All partial or total reproduction and copy without written authorization of Italgroup S.r.l. is strictly forbidden.

CONTACT US

Italgroup S.r.l.
Via Pacinotti 20/22
41010 - Gaggio di Piano (Modena) – Italy

Tel. +39 059 92 42 57
Fax +39 059 92 01 13
e-mail: italgroup@italgroup.eu
internet: <http://www.italgroup.eu>

REACH US



Europe

Austria
Belgium
Croatia
Czech Republic
Cyprus
Denmark
Faroe Islands
France
Finland
Germany
Greece
Iceland
Italy
Netherland
Norway
Poland
Portugal
Russia
Slovenia
Spain
Sweden
Switzerland
Turkey
Ukraina
United Kingdom

Africa

Egypt
South Africa
Tunisia

America

Argentina
Brazil
Canada
Chile
Mexico
Peru
USA
Colombia

Asia

China
Hong Kong
India
Indonesia
Iran
Israel
Philippines
Russia
Belarus
Singapore
South Korea
Thailand
Taiwan
United Arab Emirates
Vietnam

Oceania

Australia
New Zeland

