

# Italgroup<sup>®</sup>

*HYDRAULIC MOTORS*

ITALY



**IAM**

*Single displacement hydraulic motors*

---

**ITALGROUP SRL**  
**IAM SERIES - IAM H5**  
**GENERAL CATALOGUE**

---

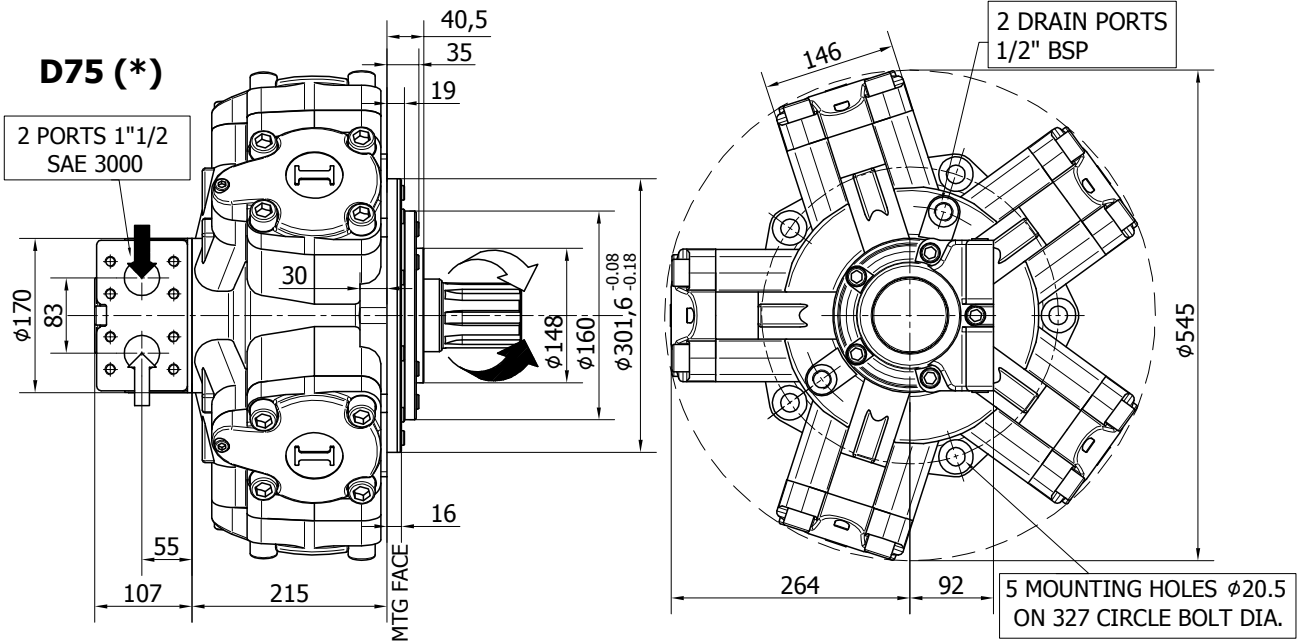
**INDEX - IAM H5**

---

<u>IAM H5 - INSTALLATION DRAWINGS</u>	Pag	122 - 123
<u>IAM 1000-1200-1400-1500-1600/C1100 H5 INSTALLATION DRAWINGS</u>	"	124 - 125
<u>IAM 1600-1800-2000-2200/C H5 - INSTALLATION DRAWINGS</u>	"	126 - 127
<u>IAM 1000/B60 - 1400/B80 - 1600/B100 H5 - INSTALLATION DRAWINGS</u>	"	128 - 129
<u>IAM H5/GM5 - INSTALLATION DRAWINGS</u>	"	130 - 131
<u>IAM H5 - PERFORMANCE DIAGRAMS</u>	"	132 - 136
<u>IAM H5 - ORDERING CODE</u>	"	137

**INSTALLATION DRAWING**

Available distributor flanges: **FL5** **FL6**  
for S03 and S04, refer to page 156 (distributor fitting D75)



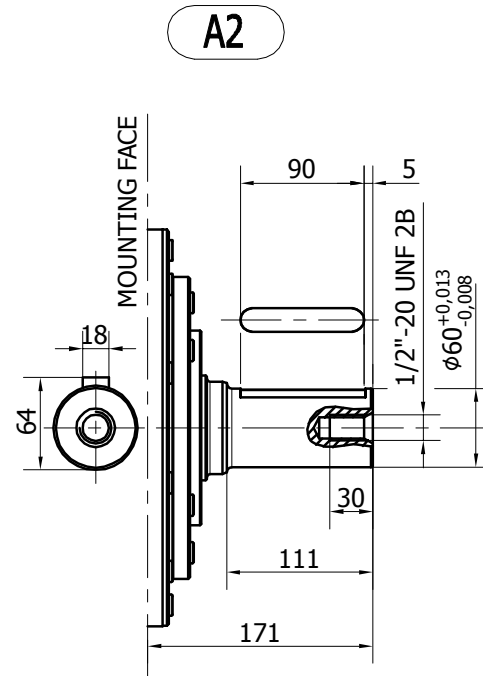
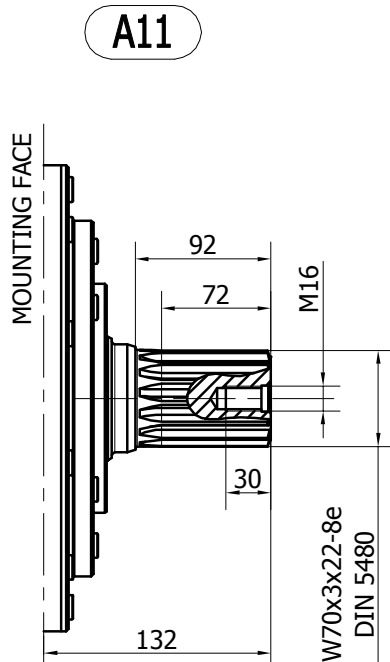
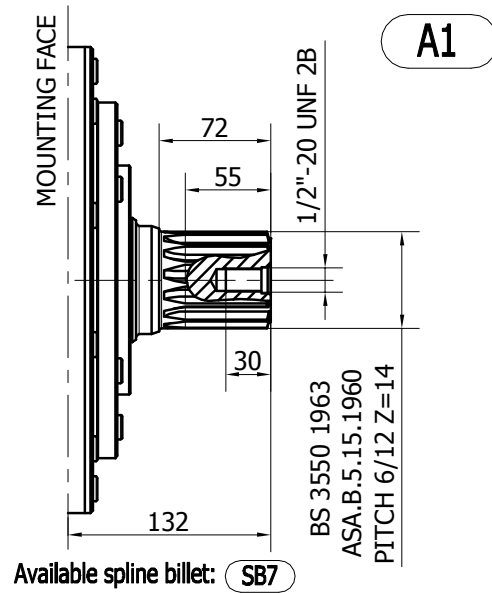
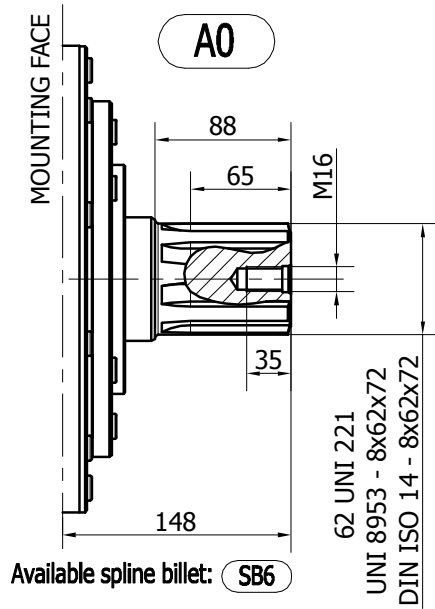
**TECHNICAL DATA**

		1000	1200	1400	1500	1600	1800	2000	2200 (*****)
DISPLACEMENT	[cc]	1094	1231	1376	1528	1648	1815	2035	2220
SPECIFIC TORQUE	[Nm/bar]	17.4	19.6	21.9	24.3	26.2	28.9	32.4	35.3
MAX. CONT. PRESSURE	[bar]	250	250	250	250	250	250	250	250
HYDROSTATIC TEST PRES- SURE	[bar]	420	420	420	420	420	420	420	420
MAX. CONT. SPEED	[rpm]	350	300	300	300	300	250	230	220
PEAK SPEED (***)	[rpm]	400	350	350	350	340	300	260	240
MAX. CONT. POWER (****)	[kW]	90	90	90	90	90	90	90	90
MAX. POWER	[kW]	120	120	120	120	120	120	120	120
MAX. CASE PRESSURE	[bar]	6	6	6	6	6	6	6	6
DRY WEIGHT	[kg]	173	173	173	173	173	173	173	173
TEMPERATURE RANGE (**)	[°C]	-30÷70	-30÷70	-30÷70	-30÷70	-30÷70	-30÷70	-30÷70	-30÷70

- (\*) The standard distributor (D75) is shown. Please refer to distributors section (pag. 176-177) for different distributor interfaces.
- (\*\*) Please refer to the hydraulic fluid recommendations (pag. 10-11).
- (\*\*\*) Do not exceed maximum power (see pag. 13).
- (\*\*\*\*) For motor operation with a continuous duty cycle at maximum continuous power the flushing is usually required. For more information please contact our technical department.
- (\*\*\*\*\*) Only for spare parts market. Please contact our technical department for more details.

The data specified into the catalogue are for product description purpose only and must not be interpreted as warranted characteristics in legal sense. Italgrou S.r.l. reserves the right to implement modifications without notice. All partial or total reproduction and copy without written authorization of Italgrou S.r.l. is strictly forbidden.

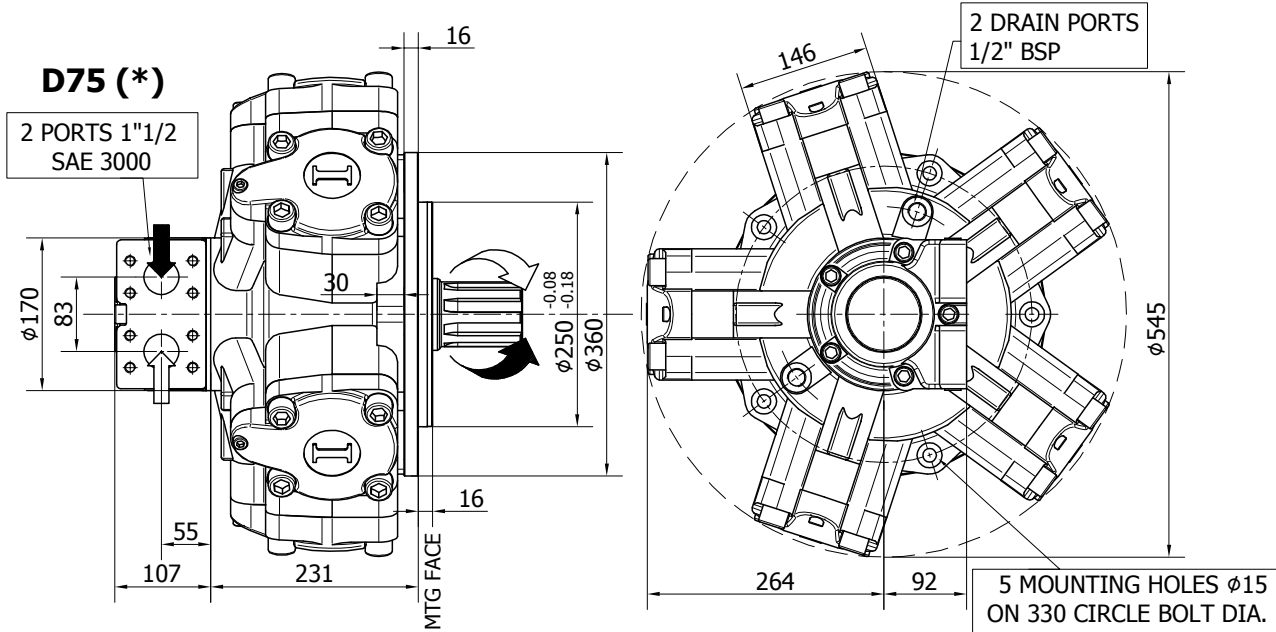
SHAFT CONFIGURATIONS



The data specified into the catalogue are for product description purpose only and must not be interpreted as warranted characteristics in legal sense. Italgrou S.r.l. reserves the right to implement modifications without notice. All partial or total reproduction and copy without written authorization of Italgrou S.r.l. is strictly forbidden.

**INSTALLATION DRAWING**

Available distributor flange: **FL4**  
refer to page 184 (distributor fitting D75)



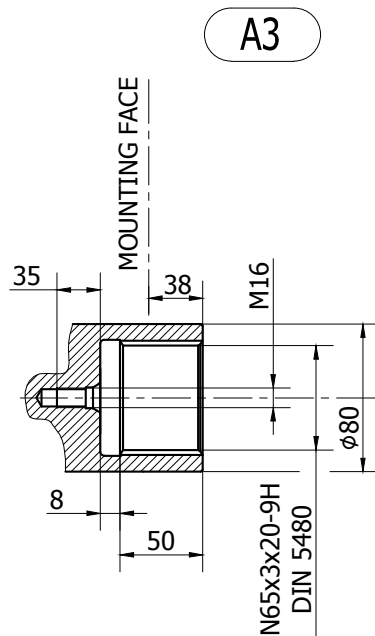
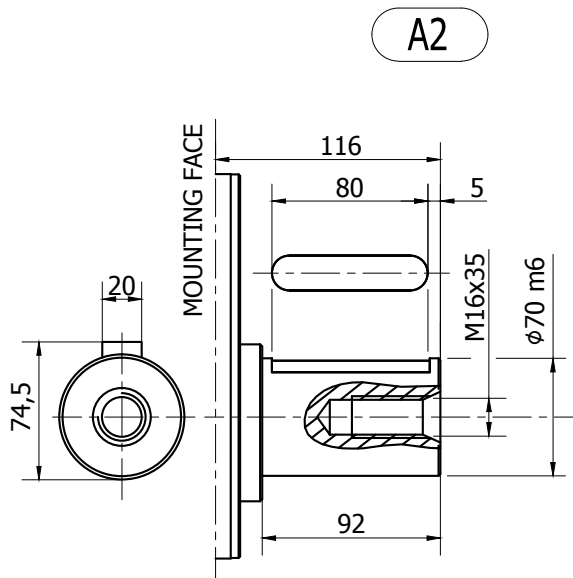
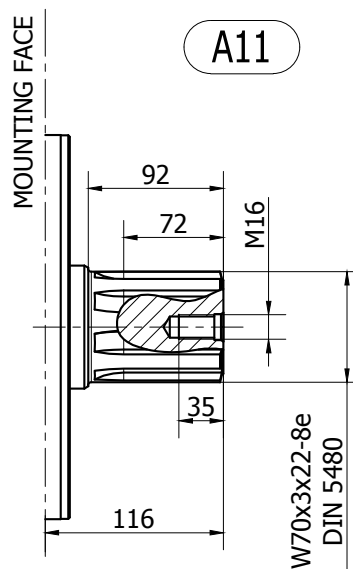
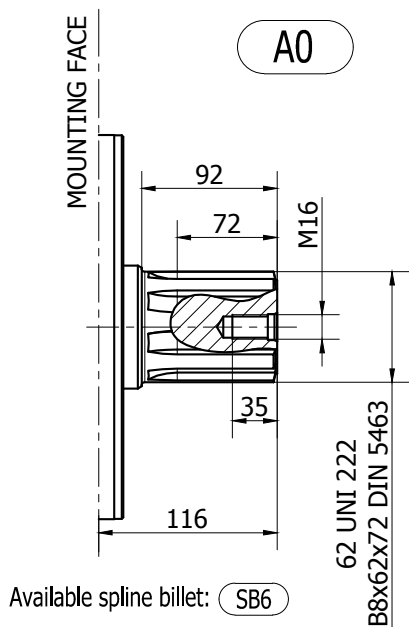
**TECHNICAL DATA**

		<b>1000</b>	<b>1200</b>	<b>1400</b>	<b>1500</b>	<b>1600</b>
DISPLACEMENT	[cc]	1094	1231	1376	1528	1648
SPECIFIC TORQUE	[Nm/bar]	17.4	19.6	21.9	24.3	26.2
MAX. CONT. PRESSURE	[bar]	250	250	250	250	250
HYDROSTATIC TEST PRES-SURE	[bar]	420	420	420	420	420
MAX. CONT. SPEED	[rpm]	350	300	300	300	300
PEAK SPEED (***)	[rpm]	400	350	350	350	340
MAX. CONT. POWER (****)	[kW]	90	90	90	90	90
MAX. POWER	[kW]	120	120	120	120	120
MAX. CASE PRESSURE	[bar]	6	6	6	6	6
DRY WEIGHT	[kg]	173	173	173	173	173
TEMPERATURE RANGE (**)	[°C]	-30÷70	-30÷70	-30÷70	-30÷70	-30÷70

- (\*) The standard distributor (D75) is shown. Please refer to distributors section (pag. 176-177) for differents distributor interfaces.
- (\*\*) Please refer to the hydraulic fluid recommendations (pag. 10-11).
- (\*\*\*) Do not exceed maximum power (see pag. 13).
- (\*\*\*\*) For motor operation with a continuous duty cycle at maximum continuous power the flushing is usually required. For more information please contact our technical department.

The data specified into the catalogue are for product description purpose only and must not be interpreted as warranted characteristics in legal sense. Italgrou S.r.l. reserves the right to implement modifications without notice. All partial or total reproduction and copy without written authorization of Italgrou S.r.l. is strictly forbidden.

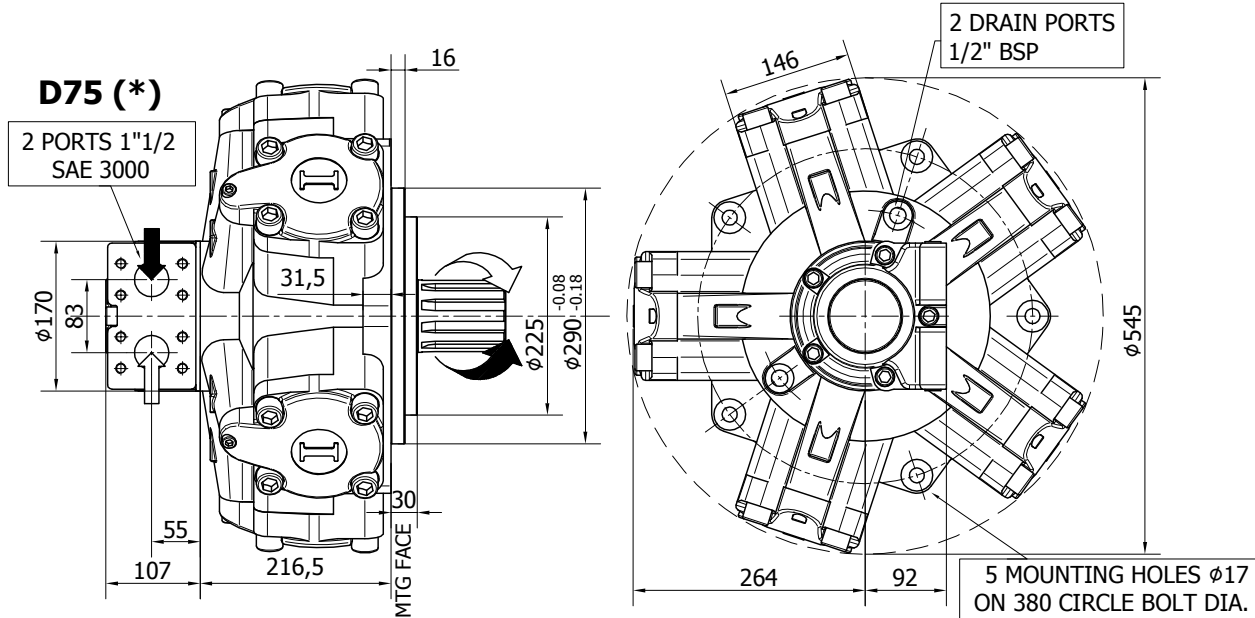
SHAFT CONFIGURATIONS



The data specified into the catalogue are for product description purpose only and must not be interpreted as warranted characteristics in legal sense. Italgrou S.r.l. reserves the right to implement modifications without notice. All partial or total reproduction and copy without written authorization of Italgrou S.r.l. is strictly forbidden.

**INSTALLATION DRAWING**

Available distributor flange: **FL4**  
refer to page 184 (distributor fitting D75)



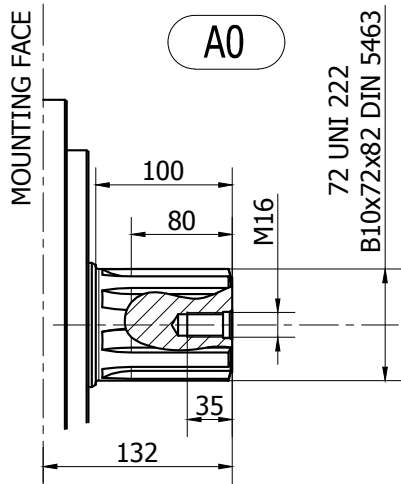
**TECHNICAL DATA**

		<b>1600</b>	<b>1800</b>	<b>2000</b>	<b>2200</b> (*****)
DISPLACEMENT	[cc]	1648	1815	2035	2220
SPECIFIC TORQUE	[Nm/bar]	26.2	28.9	32.4	35.3
MAX. CONT. PRESSURE	[bar]	250	250	250	250
HYDROSTATIC TEST PRES- SURE	[bar]	420	420	420	420
MAX. CONT. SPEED	[rpm]	300	250	230	220
PEAK SPEED (***)	[rpm]	340	300	260	240
MAX. CONT. POWER (****)	[kW]	90	90	90	90
MAX. POWER	[kW]	120	120	120	120
MAX. CASE PRESSURE	[bar]	6	6	6	6
DRY WEIGHT	[kg]	173	173	173	173
TEMPERATURE RANGE (**)	[°C]	-30÷70	-30÷70	-30÷70	-30÷70

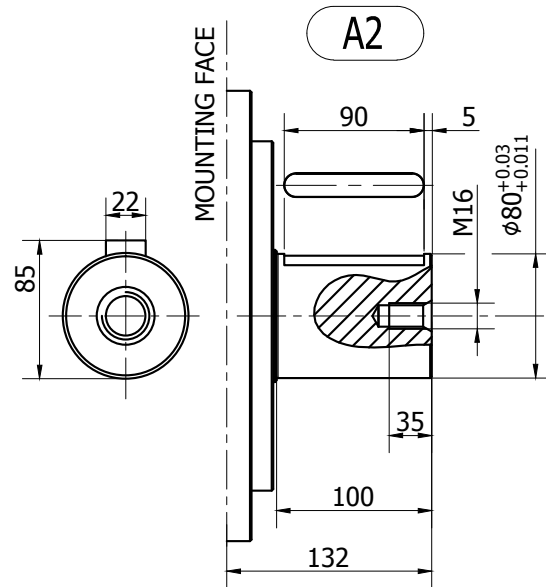
- (\*) The standard distributor (D75) is shown. Please refer to distributors section (pag. 176-177) for different distributor interfaces.
- (\*\*) Please refer to the hydraulic fluid recommendations (pag. 10-11).
- (\*\*\*) Do not exceed maximum power (see pag. 13).
- (\*\*\*\*) For motor operation with a continuous duty cycle at maximum continuous power the flushing is usually required. For more information please contact our technical department.
- (\*\*\*\*\*) Only for spare parts market. Please contact our technical department for more details.

The data specified into the catalogue are for product description purpose only and must not be interpreted as warranted characteristics in legal sense. Italgrou S.r.l. reserves the right to implement modifications without notice. All partial or total reproduction and copy without written authorization of Italgrou S.r.l. is strictly forbidden.

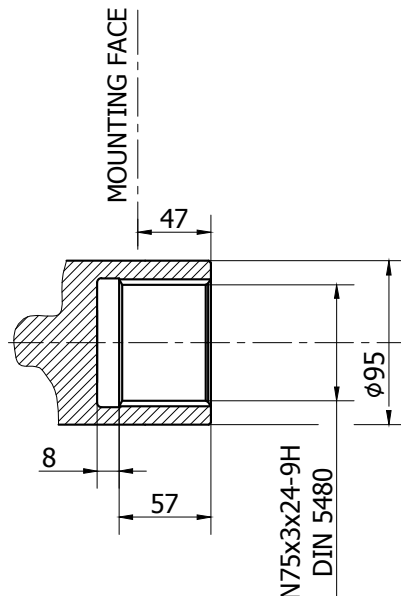
SHAFT CONFIGURATIONS



Available spline billet: **SB8**



**A3**

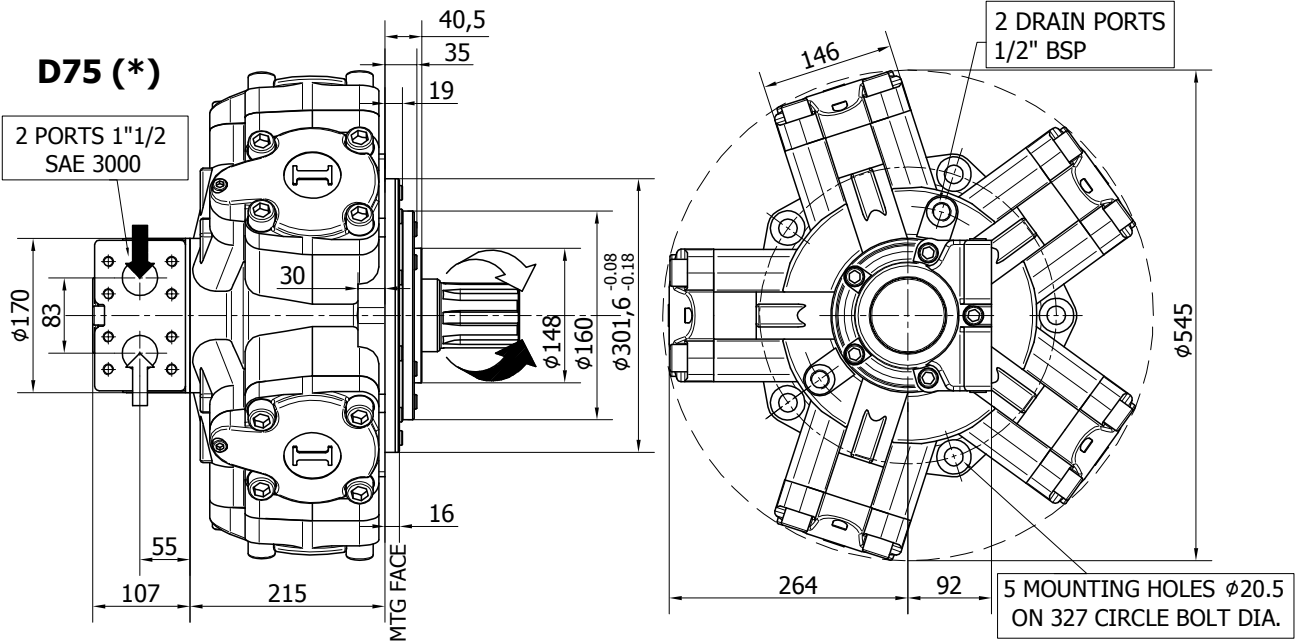


The data specified into the catalogue are for product description purpose only and must not be interpreted as warranted characteristics in legal sense. Italgrou S.r.l. reserves the right to implement modifications without notice. All partial or total reproduction and copy without written authorization of Italgrou S.r.l. is strictly forbidden.



**INSTALLATION DRAWING**

Available distributor flanges: **FL5** **FL6**  
for S03 and S04, refer to page 156 (distributor fitting D75)



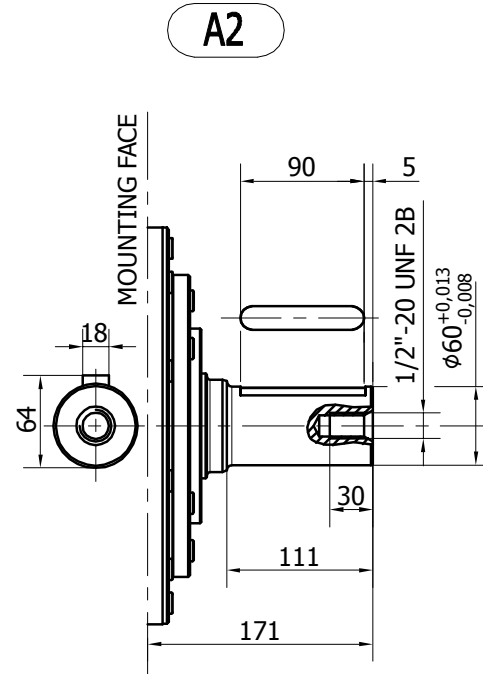
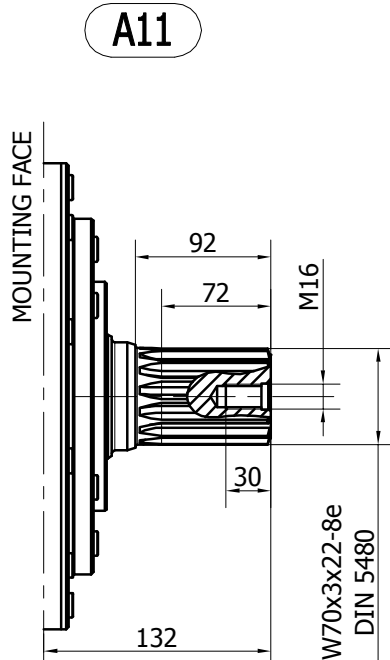
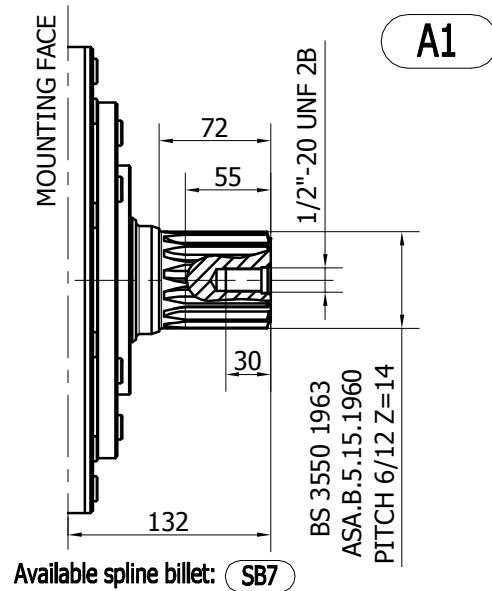
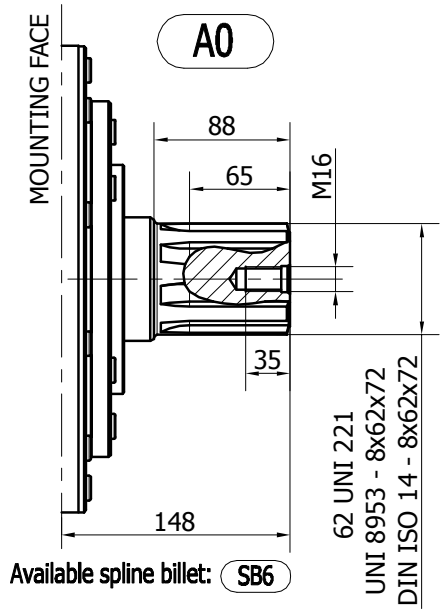
**TECHNICAL DATA**

		<b>1000</b>	<b>1400</b>	<b>1600</b>
DISPLACEMENT	[cc]	1094	1376	1648
SPECIFIC TORQUE	[Nm/bar]	17.4	21.9	26.2
MAX. CONT. PRESSURE	[bar]	250	250	250
HYDROSTATIC TEST PRES-SURE	[bar]	420	420	420
MAX. CONT. SPEED	[rpm]	350	300	300
PEAK SPEED (***)	[rpm]	400	350	340
MAX. CONT. POWER (****)	[kW]	90	90	90
MAX. POWER	[kW]	120	120	120
MAX. CASE PRESSURE	[bar]	6	6	6
DRY WEIGHT	[kg]	173	173	173
TEMPERATURE RANGE (**)	[°C]	-30÷70	-30÷70	-30÷70

- (\*) The standard distributor (D75) is shown. Please refer to distributors section (pag. 176-177) for differents distributor interfaces.
- (\*\*) Please refer to the hydraulic fluid recommendations (pag. 10-11).
- (\*\*\*) Do not exceed maximum power (see pag. 13).
- (\*\*\*\*) For motor operation with a continuous duty cycle at maximum continuous power the flushing is usually required. For more information please contact our technical department.

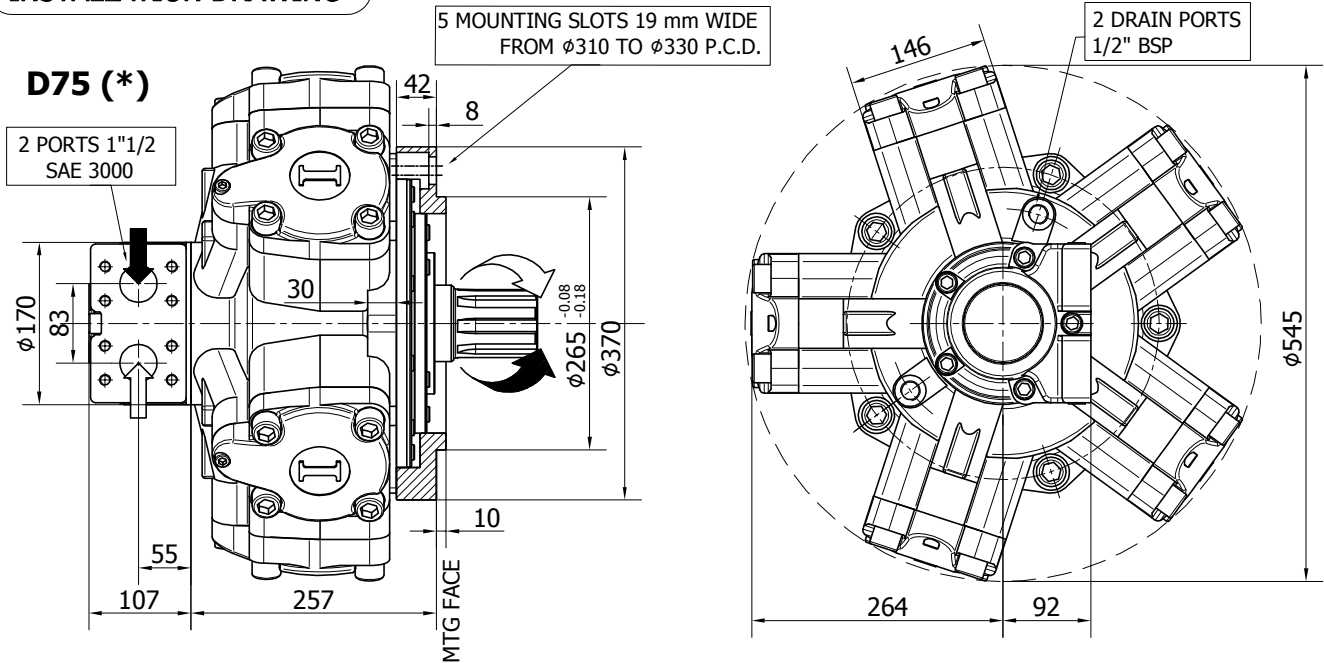
The data specified into the catalogue are for product description purpose only and must not be interpreted as warranted characteristics in legal sense. Italgroup S.r.l. reserves the right to implement modifications without notice. All partial or total reproduction and copy without written authorization of Italgroup S.r.l. is strictly forbidden.

SHAFT CONFIGURATIONS



The data specified into the catalogue are for product description purpose only and must not be interpreted as warranted characteristics in legal sense. Italgrou S.r.l. reserves the right to implement modifications without notice. All partial or total reproduction and copy without written authorization of Italgrou S.r.l. is strictly forbidden.

**INSTALLATION DRAWING**



**TECHNICAL DATA**

		1000	1200	1400	1500	1600	1800	2000	2200 (*****)
DISPLACEMENT	[cc]	1094	1231	1376	1528	1648	1815	2035	2220
SPECIFIC TORQUE	[Nm/bar]	17.4	19.6	21.9	24.3	26.2	28.9	32.4	35.3
MAX. CONT. PRESSURE	[bar]	250	250	250	250	250	250	250	250
HYDROSTATIC TEST PRES- SURE	[bar]	420	420	420	420	420	420	420	420
MAX. CONT. SPEED	[rpm]	350	300	300	300	300	250	230	220
PEAK SPEED (***)	[rpm]	400	350	350	350	340	300	260	240
MAX. CONT. POWER (****)	[kW]	90	90	90	90	90	90	90	90
MAX. POWER	[kW]	120	120	120	120	120	120	120	120
MAX. CASE PRESSURE	[bar]	6	6	6	6	6	6	6	6
DRY WEIGHT	[kg]	173	173	173	173	173	173	173	173
TEMPERATURE RANGE (**)	[°C]	-30÷70	-30÷70	-30÷70	-30÷70	-30÷70	-30÷70	-30÷70	-30÷70

- (\*) The standard distributor (D75) is shown. Please refer to distributors section (pag. 176-177) for different distributor interfaces.

- (\*\*) Please refer to the hydraulic fluid recommendations (pag. 10-11).

- (\*\*\*) Do not exceed maximum power (see pag. 13).

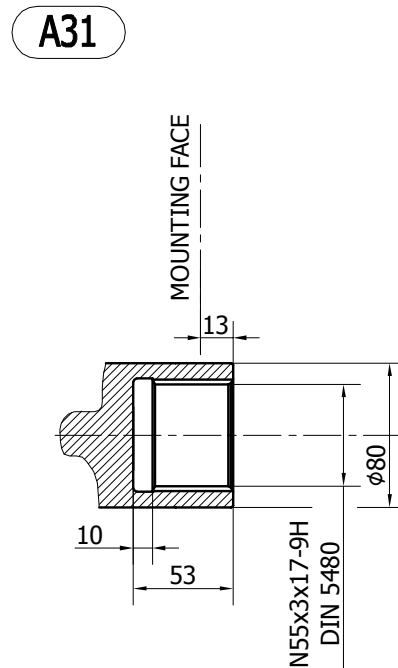
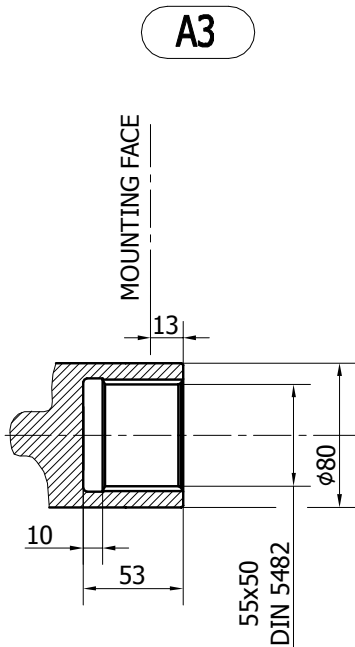
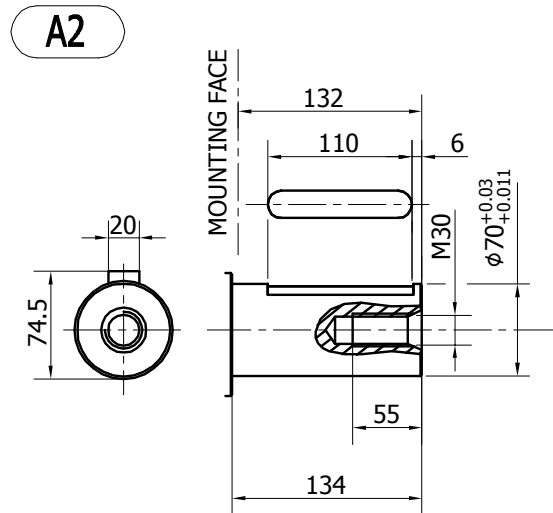
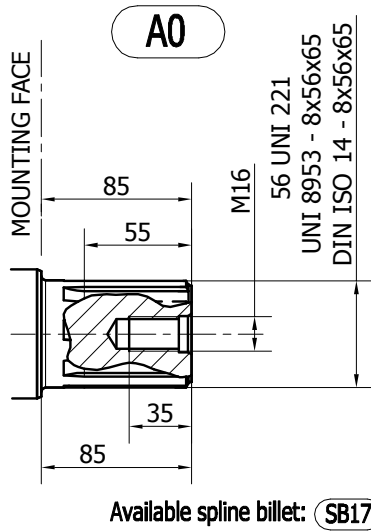
- (\*\*\*\*) For motor operation with a continuous duty cycle at maximum continuous power the flushing is usually required.

For more information please contact our technical department.

- (\*\*\*\*\*) Only for spare parts market. Please contact our technical department for more details.

The data specified into the catalogue are for product description purpose only and must not be interpreted as warranted characteristics in legal sense. Italgrou S.r.l. reserves the right to implement modifications without notice. All partial or total reproduction and copy without written authorization of Italgrou S.r.l. is strictly forbidden.

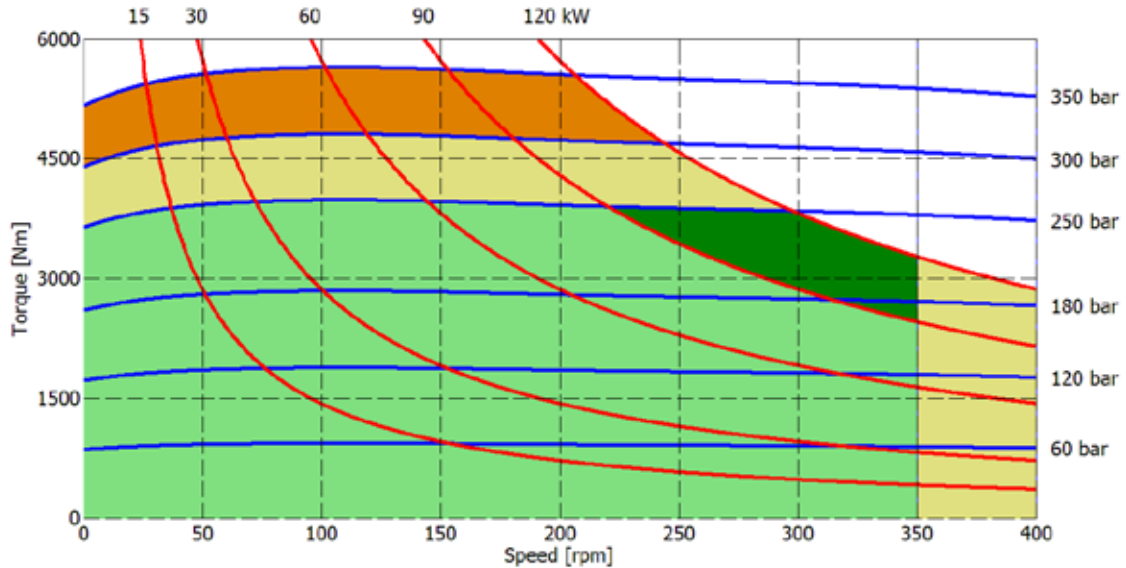
**SHAFT CONFIGURATIONS**



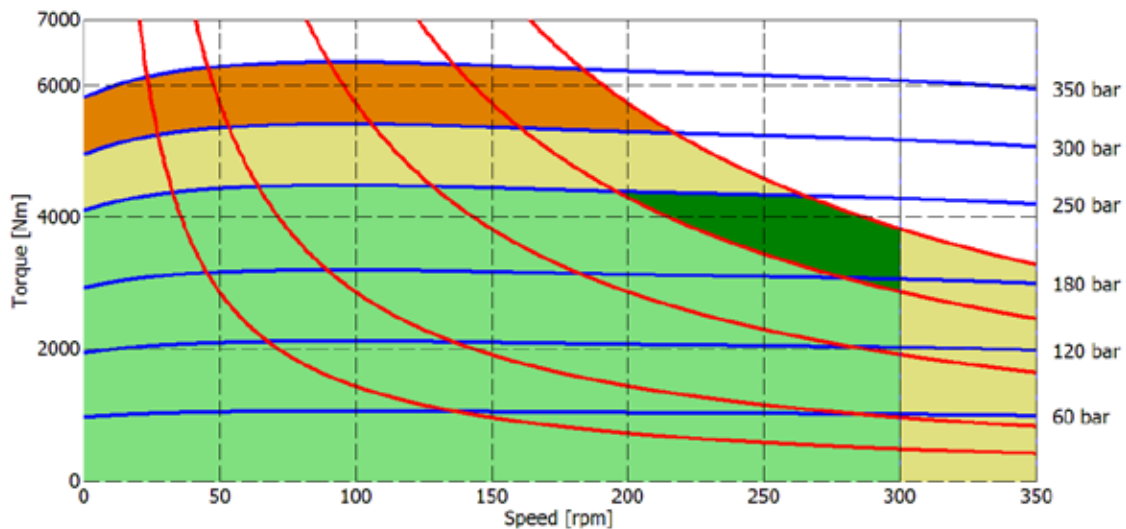
The data specified into the catalogue are for product description purpose only and must not be interpreted as warranted characteristics in legal sense. Italgrou S.r.l. reserves the right to implement modifications without notice. All partial or total reproduction and copy without written authorization of Italgrou S.r.l. is strictly forbidden.

**IAM H5 - PERFORMANCE DIAGRAMS**

**1000 cc**



**1200 cc**



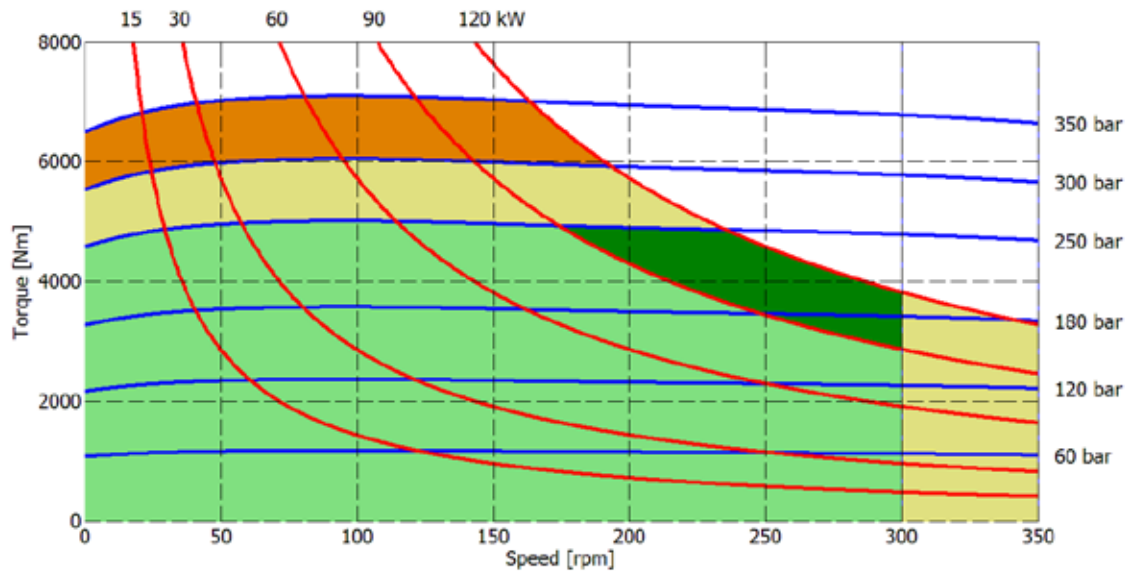
- Continuous operation
- Continuous operation with flushing or intermittent operation (see below for intermittent operation)
- Intermittent operation: permitted for a 15% of duty cycle, for 3 minutes maximum period
- Peak operation: permitted for very short periods (3-5 seconds every 10-15 minutes)

**The above diagrams are referring to the hydraulic motor working with a fluid in ideal conditions (viscosity at 40 cSt).** In case the working temperature increases and viscosity reach values under the recommended values (see hydraulic fluid recommendations) flushing must be performed or ISO oil grade must be changed. The working temperature must not overcome 70 °C.

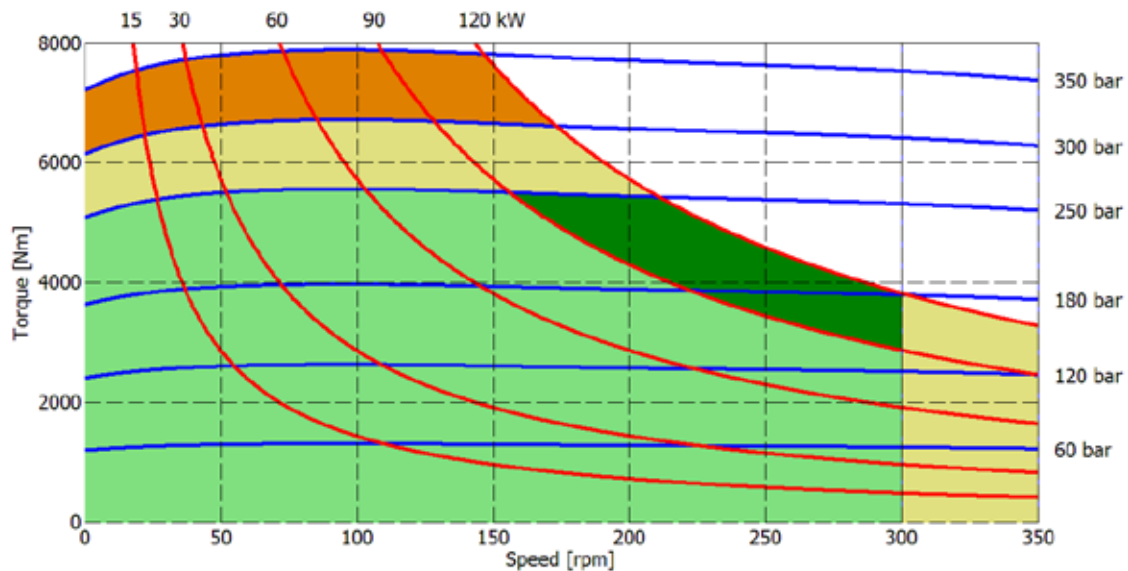
The data specified into the catalogue are for product description purpose only and must not be interpreted as warranted characteristics in legal sense. Italgrou S.r.l. reserves the right to implement modifications without notice. All partial or total reproduction and copy without written authorization of Italgrou S.r.l. is strictly forbidden.



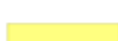

# IAM H5 - PERFORMANCE DIAGRAMS

## 1400 cc



## 1500 cc



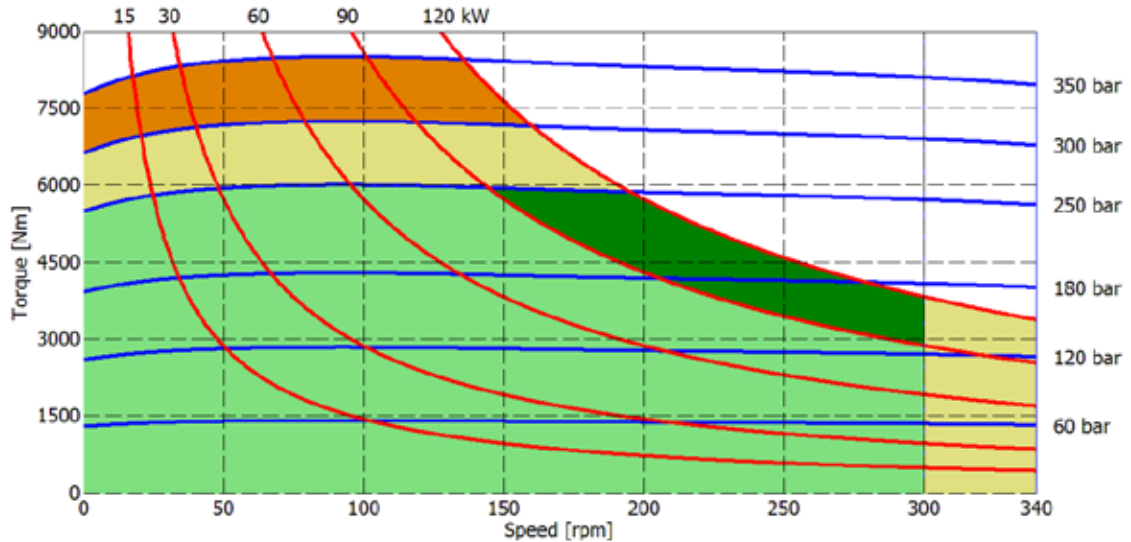
-  Continuous operation
-  Continuous operation with flushing or intermittent operation (see below for intermittent operation)
-  Intermittent operation: permitted for a 15% of duty cycle, for 3 minutes maximum period
-  Peak operation: permitted for very short periods (3-5 seconds every 10-15 minutes)

**The above diagrams are referring to the hydraulic motor working with a fluid in ideal conditions (viscosity at 40 cSt).** In case the working temperature increases and viscosity reach values under the recommended values (see hydraulic fluid recommendations) flushing must be performed or ISO oil grade must be changed. The working temperature must not overcome 70 °C.

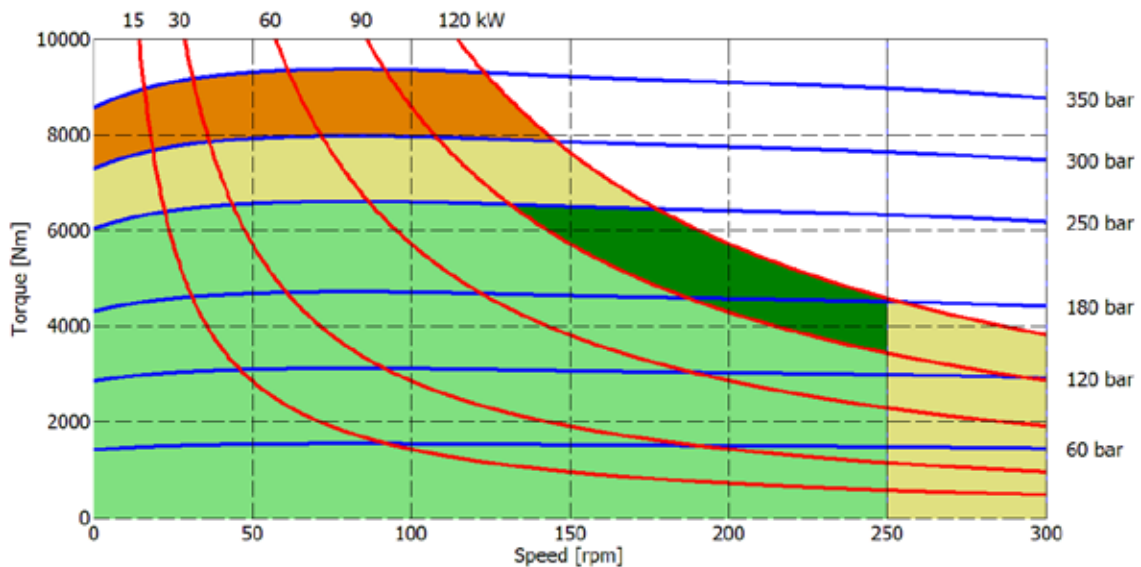
The data specified into the catalogue are for product description purpose only and must not be interpreted as warranted characteristics in legal sense. ItalgrouP S.r.l. reserves the right to implement modifications without notice. All partial or total reproduction and copy without written authorization of ItalgrouP S.r.l. is strictly forbidden.

**IAM H5 - PERFORMANCE DIAGRAMS**

**1600 cc**



**1800 cc**



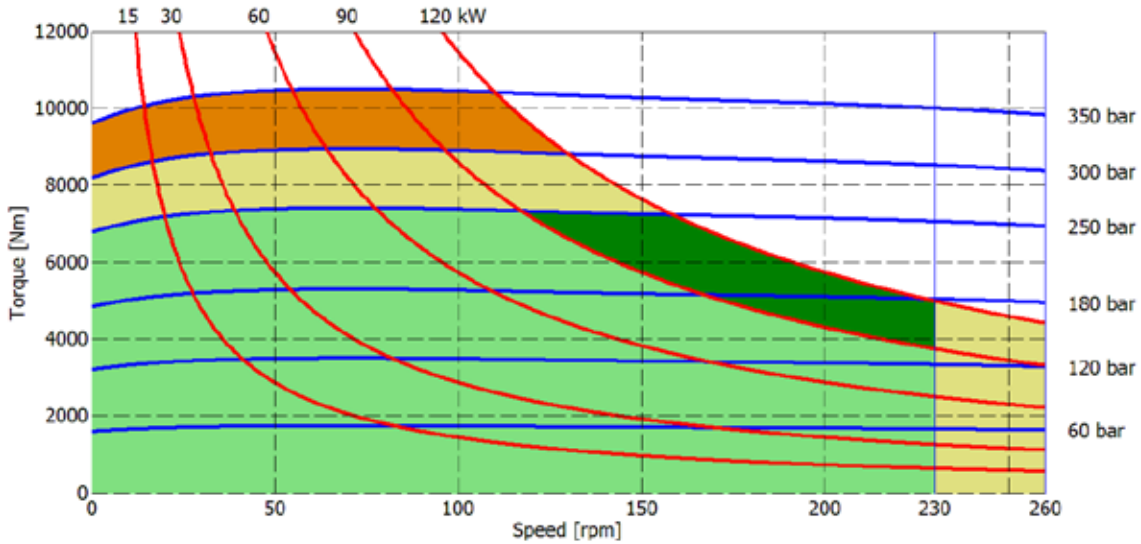
- Continuous operation
- Continuous operation with flushing or intermittent operation (see below for intermittent operation)
- Intermittent operation: permitted for a 15% of duty cycle, for 3 minutes maximum period
- Peak operation: permitted for very short periods (3-5 seconds every 10-15 minutes)

**The above diagrams are referring to the hydraulic motor working with a fluid in ideal conditions (viscosity at 40 cSt).** In case the working temperature increases and viscosity reach values under the recommended values (see hydraulic fluid recommendations) flushing must be performed or ISO oil grade must be changed. The working temperature must not overcome 70 °C.

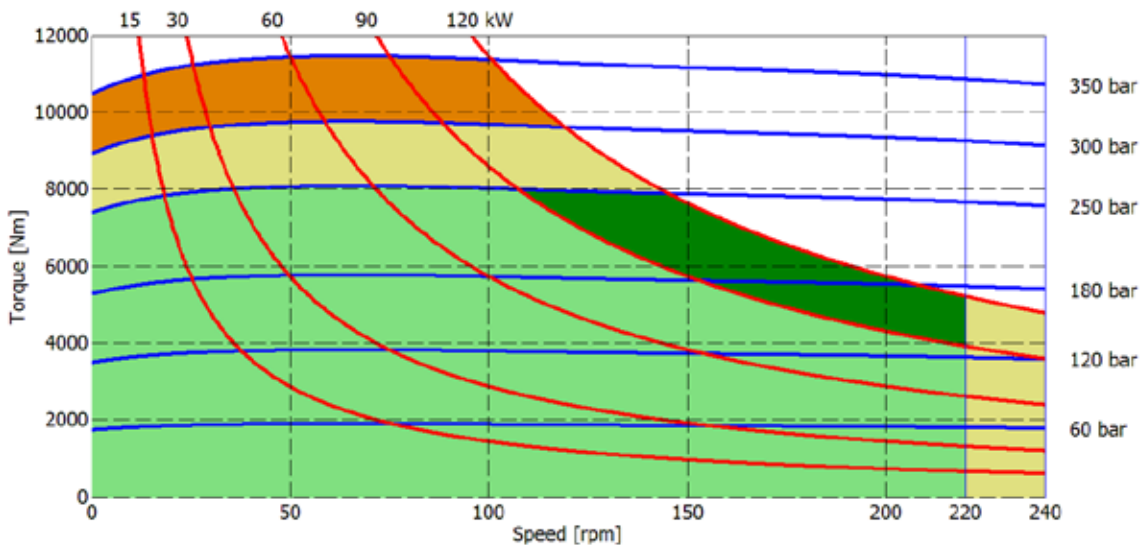
The data specified into the catalogue are for product description purpose only and must not be interpreted as warranted characteristics in legal sense. Italgrou S.r.l. reserves the right to implement modifications without notice. All partial or total reproduction and copy without written authorization of Italgrou S.r.l. is strictly forbidden.

# IAM H5 - PERFORMANCE DIAGRAMS

## 2000 cc



## 2200 cc

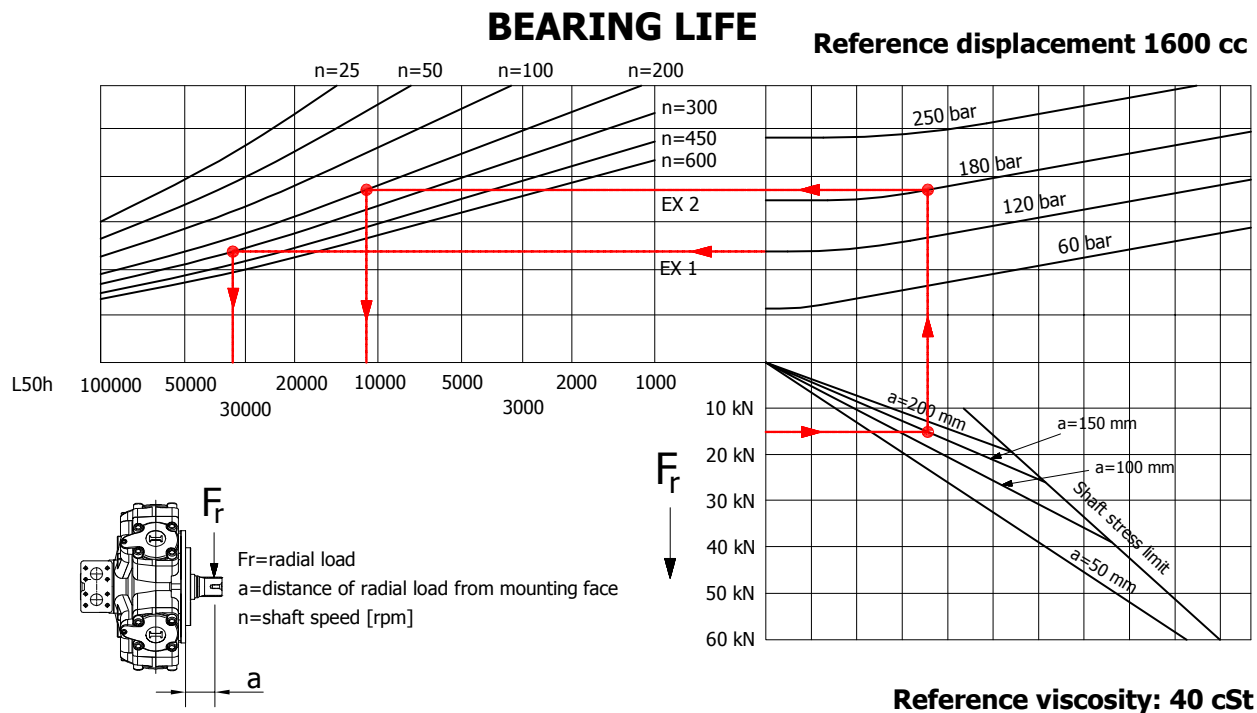


- Continuous operation
- Continuous operation with flushing or intermittent operation (see below for intermittent operation)
- Intermittent operation: permitted for a 15% of duty cycle, for 3 minutes maximum period
- Peak operation: permitted for very short periods (3-5 seconds every 10-15 minutes)

**The above diagrams are referring to the hydraulic motor working with a fluid in ideal conditions (viscosity at 40 cSt).** In case the working temperature increases and viscosity reach values under the recommended values (see hydraulic fluid recommendations) flushing must be performed or ISO oil grade must be changed. The working temperature must not overcome 70 °C.

The data specified into the catalogue are for product description purpose only and must not be interpreted as warranted characteristics in legal sense. Italgroup S.r.l. reserves the right to implement modifications without notice. All partial or total reproduction and copy without written authorization of Italgroup S.r.l. is strictly forbidden.





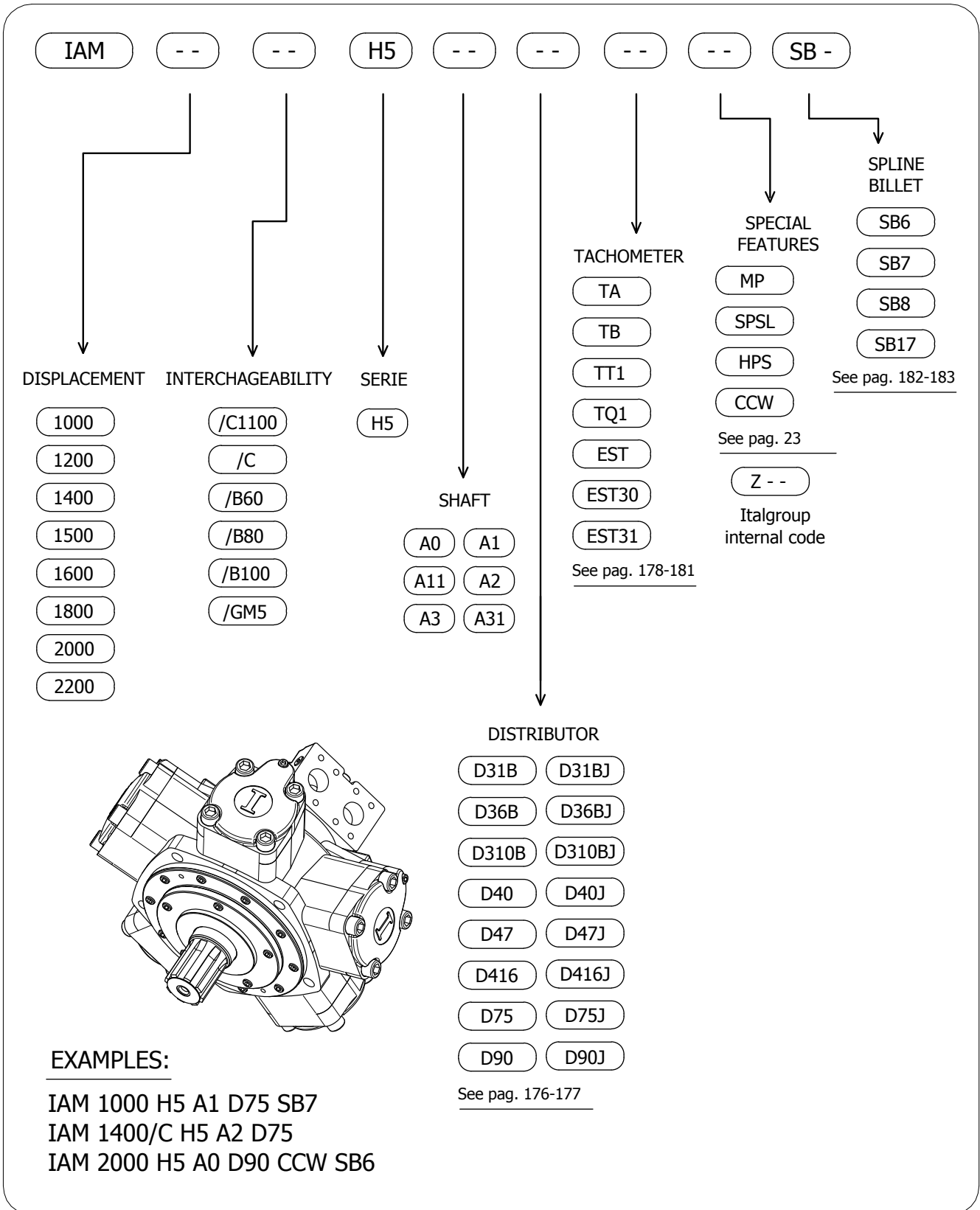
Example:

We suppose (EX1):  $p=120$  [bar],  $n=300$  [rpm]; we obtain an average lifetime of 33000 [h].

If we suppose (EX2):  $F_r=15$  [kN],  $a=150$  [mm],  $n=200$  [rpm] and  $p=180$  [bar] we obtain an average lifetime of 11000 [h].

The above data are referring to the IAM H5 series motors, displacement 1600 cc.

# IAM H5 - ORDERING CODE



The data specified into the catalogue are for product description purpose only and must not be interpreted as warranted characteristics in legal sense. Italgrou S.r.l. reserves the right to implement modifications without notice. All partial or total reproduction and copy without written authorization of Italgrou S.r.l. is strictly forbidden.

---

The data specified into the catalogue are for product description purpose only and must not be interpreted as warranted characteristics in legal sense. Italgroupp S.r.l. reserves the right to implement modifications without notice. All partial or total reproduction and copy without written authorization of Italgroupp S.r.l. is strictly forbidden.

---

---

**ITALGROUP SRL**  
**IAM SERIES - IAM H55**  
**GENERAL CATALOGUE**

---

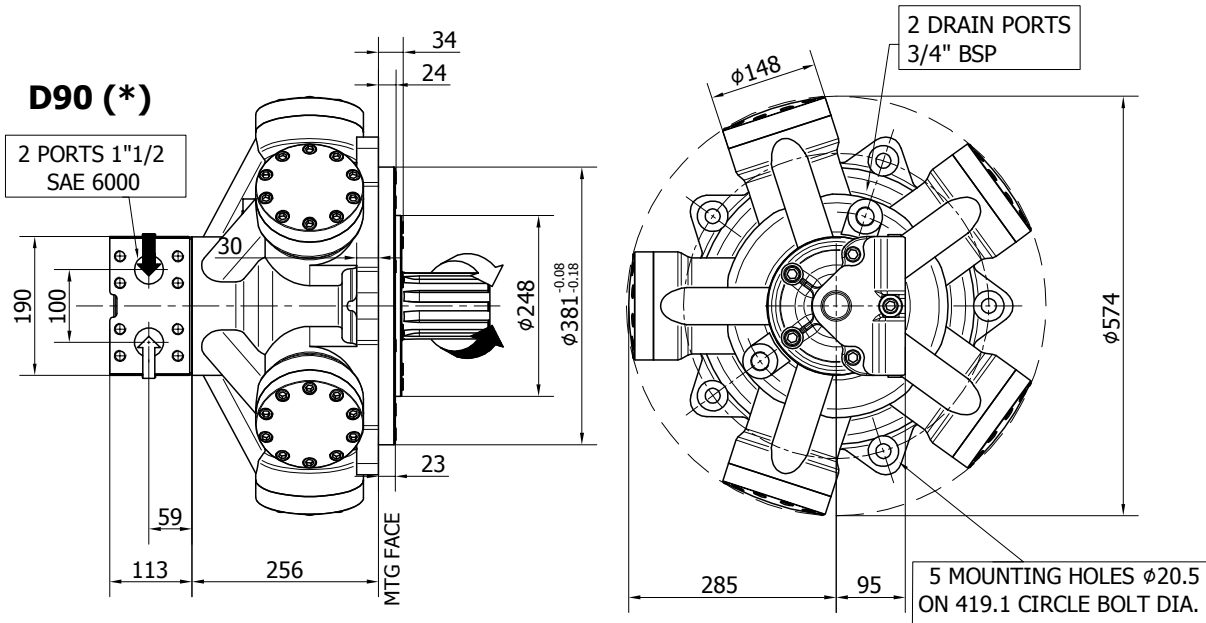
**INDEX - IAM H55**

---

<u>IAM H55 - INSTALLATION DRAWINGS</u>	Pag	140 - 141
<u>IAM H55/C - INSTALLATION DRAWINGS</u>	"	142 - 143
<u>IAM H55 - ORDERING CODE</u>	"	144 - 146
<u>IAM H55 - ORDERING CODE</u>	"	147

**INSTALLATION DRAWING**

Available distributor flange: **FL7**  
for S04, refer to page 187 (distributor fitting D90)



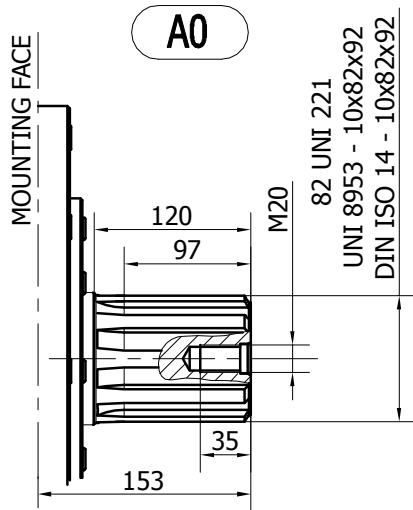
**TECHNICAL DATA**

		<b>2200</b>	<b>2500</b>	<b>2800</b>	<b>3000</b>
DISPLACEMENT	[cc]	2126	2525	2807	2983
SPECIFIC TORQUE	[Nm/bar]	33.8	40.2	44.7	48.2
MAX. CONT. PRESSURE	[bar]	250	250	250	250
HYDROSTATIC TEST PRESSURE	[bar]	420	420	420	420
MAX. CONT. SPEED	[rpm]	240	240	240	230
PEAK SPEED (***)	[rpm]	280	280	280	270
MAX. CONT. POWER (****)	[kW]	120	120	120	120
MAX. POWER	[kW]	170	170	170	170
MAX. CASE PRESSURE	[bar]	6	6	6	6
DRY WEIGHT	[kg]	203	203	203	203
TEMPERATURE RANGE (**)	[°C]	-30÷70	-30÷70	-30÷70	-30÷70

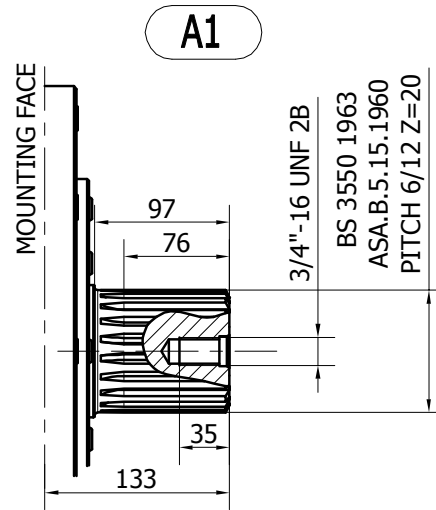
- (\*) The standard distributor (D90) is shown. Please refer to distributors section (pag. 176-177) for different distributor interfaces.
- (\*\*) Please refer to the hydraulic fluid recommendations (pag. 10-11).
- (\*\*\*) Do not exceed maximum power (see pag. 13).
- (\*\*\*\*) For motor operation with a continuous duty cycle at maximum continuous power the flushing is usually required. For more information please contact our technical department.

The data specified into the catalogue are for product description purpose only and must not be interpreted as warranted characteristics in legal sense. Italgrou S.r.l. reserves the right to implement modifications without notice. All partial or total reproduction and copy without written authorization of Italgrou S.r.l. is strictly forbidden.

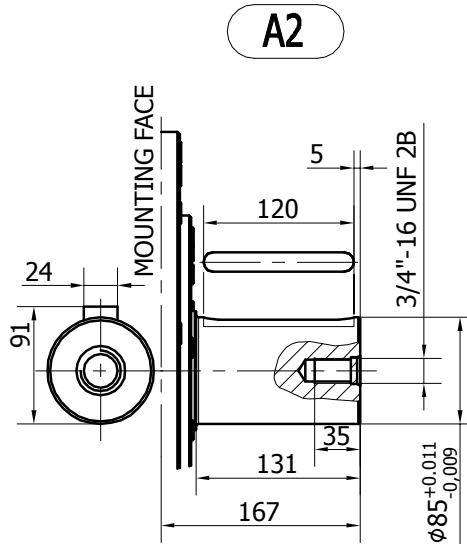
SHAFT CONFIGURATIONS



Available spline billet: **SB9**

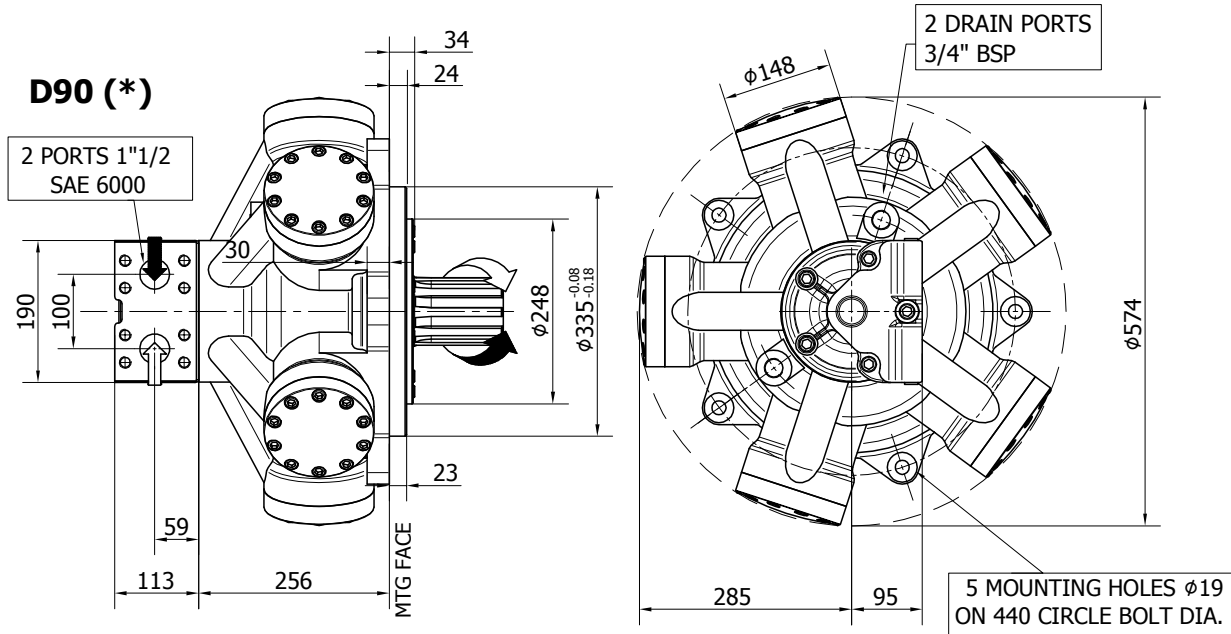


Available spline billet: **SB10**



**INSTALLATION DRAWING**

Available distributor flange: **FL10**  
refer to page 185 (distributor fitting D75)



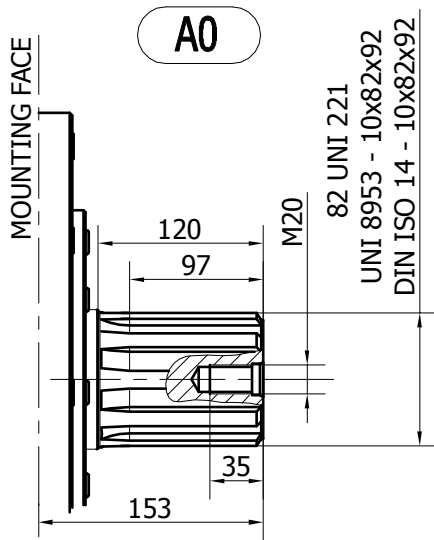
**TECHNICAL DATA**

		<b>2200</b>	<b>2500</b>	<b>2800</b>	<b>3000</b>
DISPLACEMENT	[cc]	2126	2525	2807	2983
SPECIFIC TORQUE	[Nm/bar]	33.8	40.2	44.7	48.2
MAX. CONT. PRESSURE	[bar]	250	250	250	250
HYDROSTATIC TEST PRES-SURE	[bar]	420	420	420	420
MAX. CONT. SPEED	[rpm]	240	240	240	230
PEAK SPEED (***)	[rpm]	280	280	280	270
MAX. CONT. POWER (****)	[kW]	120	120	120	120
MAX. POWER	[kW]	170	170	170	170
MAX. CASE PRESSURE	[bar]	6	6	6	6
DRY WEIGHT	[kg]	203	203	203	203
TEMPERATURE RANGE (**)	[°C]	-30÷70	-30÷70	-30÷70	-30÷70

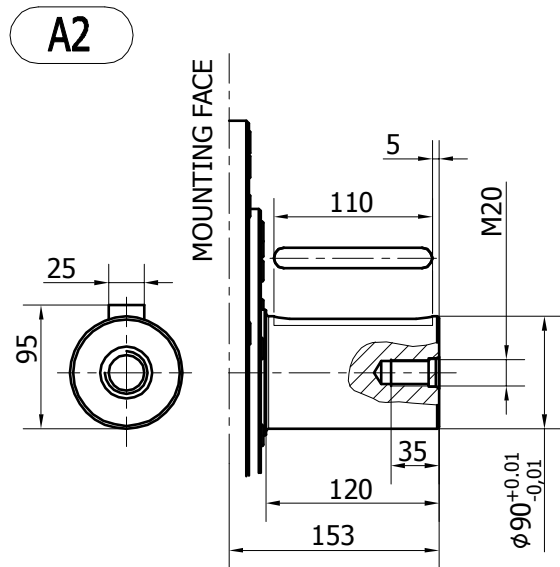
- (\*) The standard distributor (D90) is shown. Please refer to distributors section (pag. 176-177) for different distributor interfaces.
- (\*\*) Please refer to the hydraulic fluid recommendations (pag. 10-11).
- (\*\*\*) Do not exceed maximum power (see pag. 13).
- (\*\*\*\*) For motor operation with a continuous duty cycle at maximum continuous power the flushing is usually required. For more information please contact our technical department.

The data specified into the catalogue are for product description purpose only and must not be interpreted as warranted characteristics in legal sense. Italgrou S.r.l. reserves the right to implement modifications without notice. All partial or total reproduction and copy without written authorization of Italgrou S.r.l. is strictly forbidden.

SHAFT CONFIGURATIONS



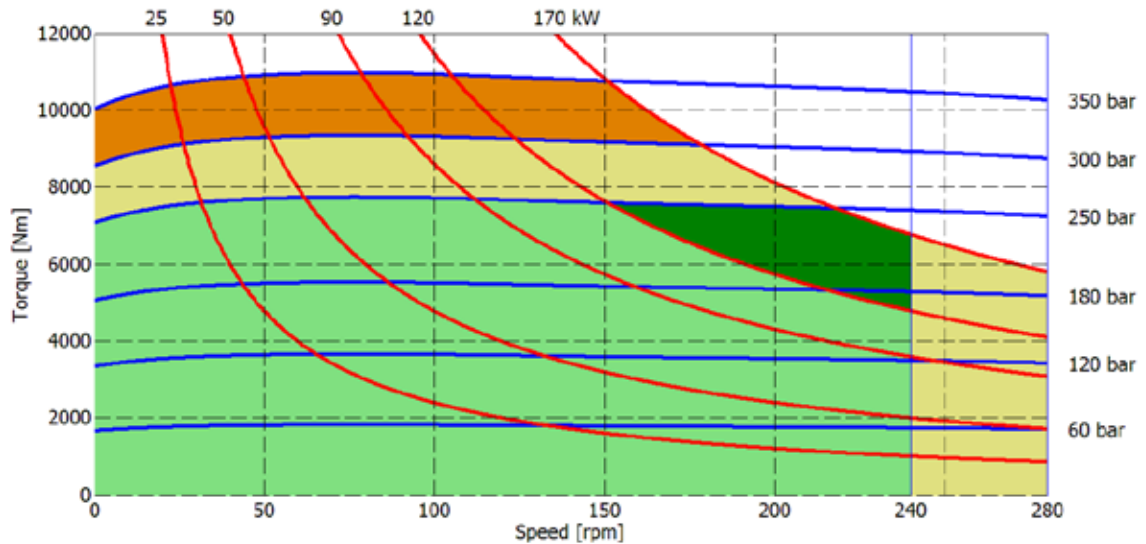
Available spline billet: **SB9**



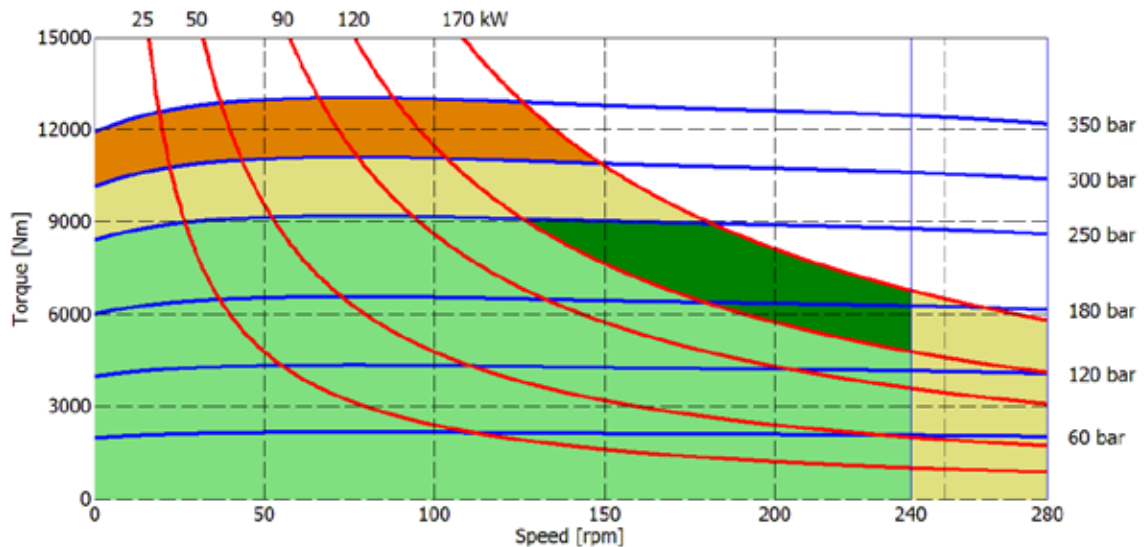


**IAM H55 - PERFORMANCE DIAGRAMS**

**2200 cc**



**2500 cc**



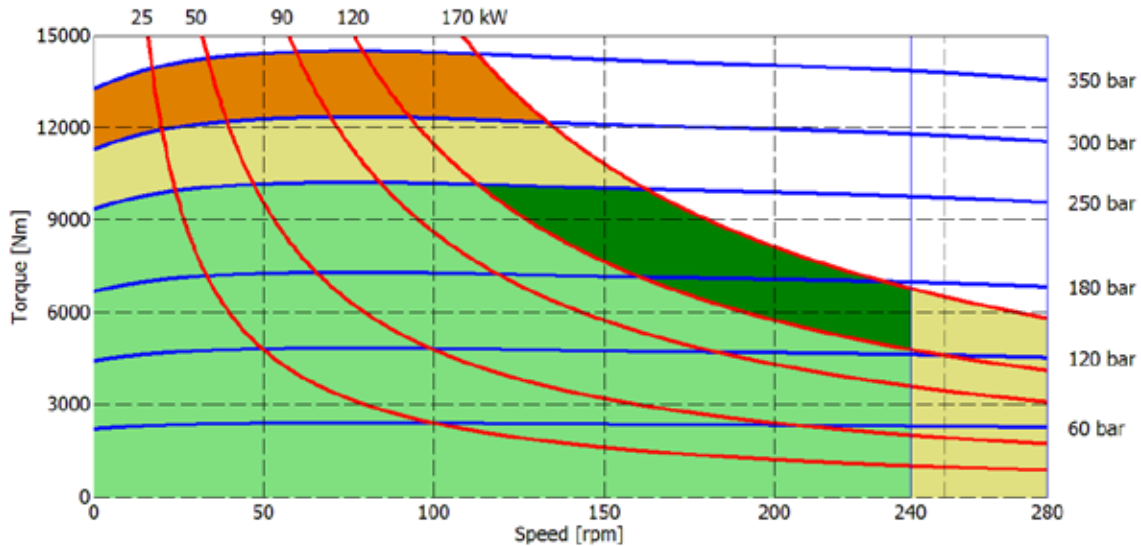
- Continuous operation
- Continuous operation with flushing or intermittent operation (see below for intermittent operation)
- Intermittent operation: permitted for a 15% of duty cycle, for 3 minutes maximum period
- Peak operation: permitted for very short periods (3-5 seconds every 10-15 minutes)

**The above diagrams are referring to the hydraulic motor working with a fluid in ideal conditions (viscosity at 40 cSt).** In case the working temperature increases and viscosity reach values under the recommended values (see hydraulic fluid recommendations) flushing must be performed or ISO oil grade must be changed. The working temperature must not overcome 70 °C.

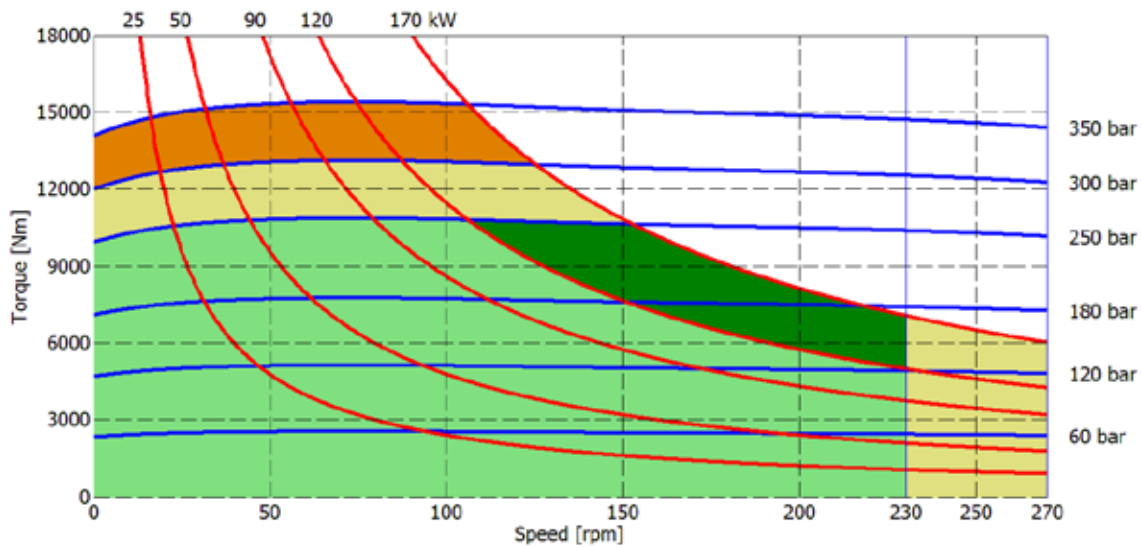
The data specified into the catalogue are for product description purpose only and must not be interpreted as warranted characteristics in legal sense. Italgrou S.r.l. reserves the right to implement modifications without notice. All partial or total reproduction and copy without written authorization of Italgrou S.r.l. is strictly forbidden.

# IAM H55 - PERFORMANCE DIAGRAMS

## 2800 cc



## 3000 cc



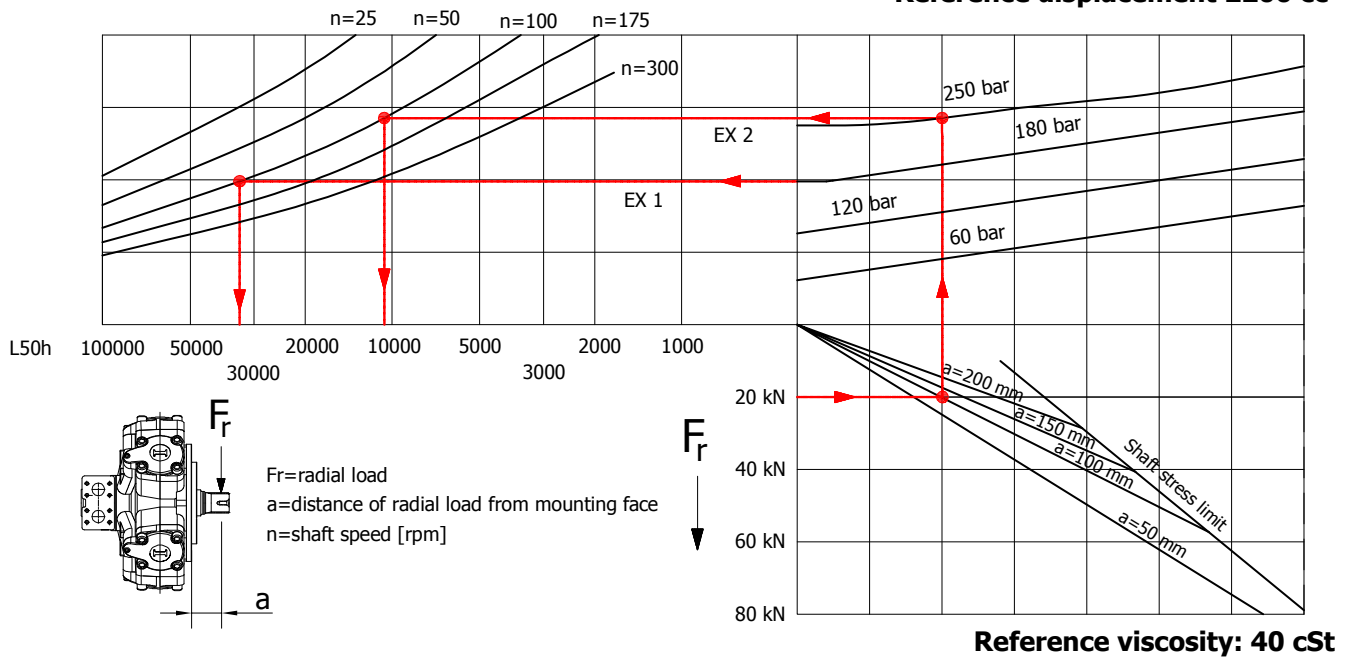
- Continuous operation
- Continuous operation with flushing or intermittent operation (see below for intermittent operation)
- Intermittent operation: permitted for a 15% of duty cycle, for 3 minutes maximum period
- Peak operation: permitted for very short periods (3-5 seconds every 10-15 minutes)

**The above diagrams are referring to the hydraulic motor working with a fluid in ideal conditions (viscosity at 40 cSt).** In case the working temperature increases and viscosity reach values under the recommended values (see hydraulic fluid recommendations) flushing must be performed or ISO oil grade must be changed. The working temperature must not overcome 70 °C.

The data specified into the catalogue are for product description purpose only and must not be interpreted as warranted characteristics in legal sense. Italgroup S.r.l. reserves the right to implement modifications without notice. All partial or total reproduction and copy without written authorization of Italgroup S.r.l. is strictly forbidden.

**BEARING LIFE**

Reference displacement 2200 cc



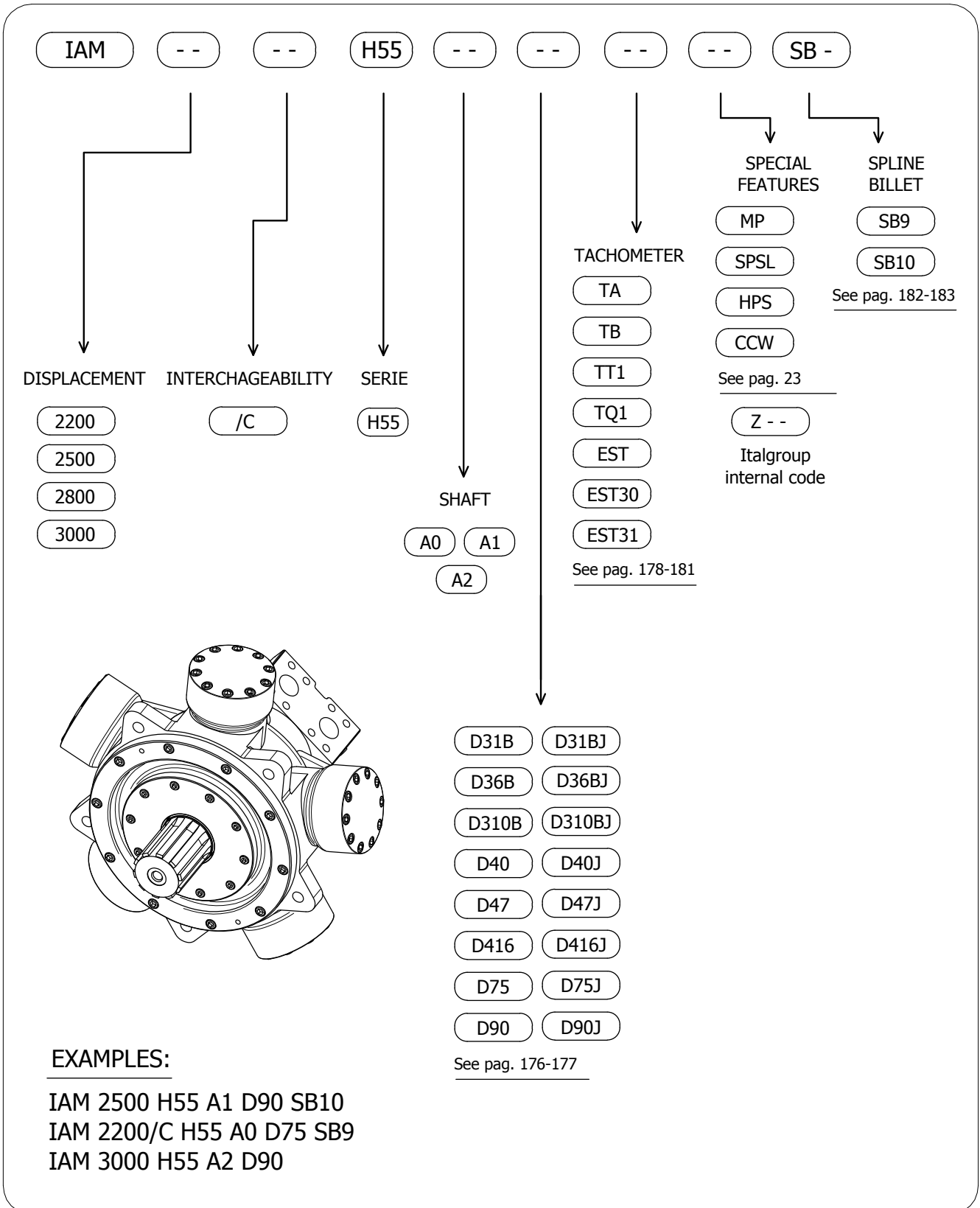
Example:

We suppose (EX1):  $p=180$  [bar],  $n=100$  [rpm]; we obtain an average lifetime of 33000 [h].

If we suppose (EX2):  $F_r=20$  [kN],  $a=100$  [mm],  $n=100$  [rpm] and  $p=250$  [bar] we obtain an average lifetime of 11000 [h].

The above data are referring to the IAM H55 series motors, displacement 2200 cc.

# IAM H55 - ORDERING CODE



The data specified into the catalogue are for product description purpose only and must not be interpreted as warranted characteristics in legal sense. Italgroup S.r.l. reserves the right to implement modifications without notice. All partial or total reproduction and copy without written authorization of Italgroup S.r.l. is strictly forbidden.

## CONTACT US

Italgroup S.r.l.  
Via Pacinotti 20/22  
41010 - Gaggio di Piano (Modena) – Italy

Tel. +39 059 92 42 57  
Fax +39 059 92 01 13  
e-mail: [italgroup@italgroup.eu](mailto:italgroup@italgroup.eu)  
internet: <http://www.italgroup.eu>

## REACH US



## Europe

Austria  
Belgium  
Croatia  
Czech Republic  
Cyprus  
Denmark  
Faroe Islands  
France  
Finland  
Germany  
Greece  
Iceland  
Italy  
Netherland  
Norway  
Poland  
Portugal  
Russia  
Slovenia  
Spain  
Sweden  
Switzerland  
Turkey  
Ukraina  
United Kingdom

## Africa

Egypt  
South Africa  
Tunisia

## America

Argentina  
Brazil  
Canada  
Chile  
Mexico  
Peru  
USA  
Colombia

## Asia

China  
Hong Kong  
India  
Indonesia  
Iran  
Israel  
Philippines  
Russia  
Belarus  
Singapore  
South Korea  
Thailand  
Taiwan  
United Arab Emirates  
Vietnam

## Oceania

Australia  
New Zeland

