

Italgroup[®]

HYDRAULIC MOTORS

ITALY



IAM

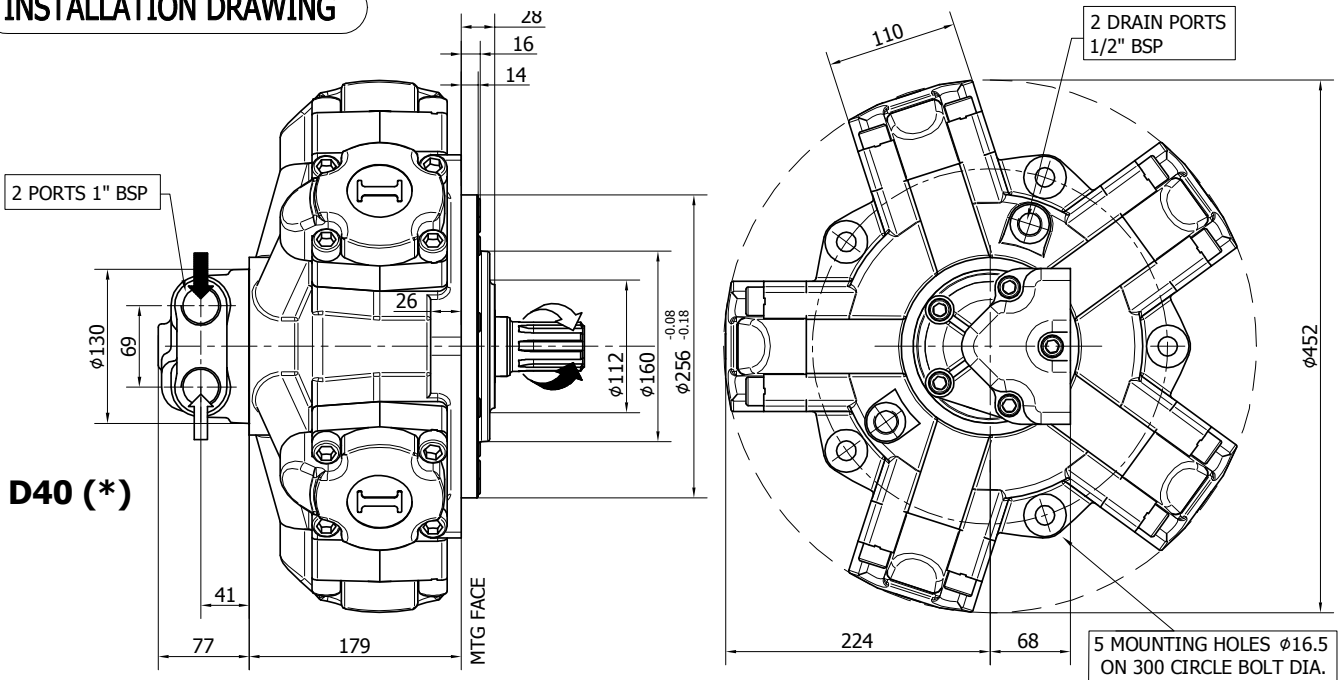
Single displacement hydraulic motors

ITALGROUP SRL
IAM SERIES - IAM H4
GENERAL CATALOGUE

INDEX - IAM H4

<u>IAM H4 - INSTALLATION DRAWING</u>	Pag	94 - 95
<u>IAM H4/C - INSTALLATION DRAWING</u>	"	96 - 97
<u>IAM H4/B45 - INSTALLATION DRAWING</u>	"	98 - 99
<u>IAM H4/GM4 - INSTALLATION DRAWING</u>	"	100 - 101
<u>IAM H4/S - INSTALLATION DRAWING</u>	"	102 - 103
<u>IAM H4 - PERFORMANCE DRAWINGS</u>	"	104 - 109
<u>IAM H4 - ORDERING CODE</u>	"	110

INSTALLATION DRAWING



TECHNICAL DATA

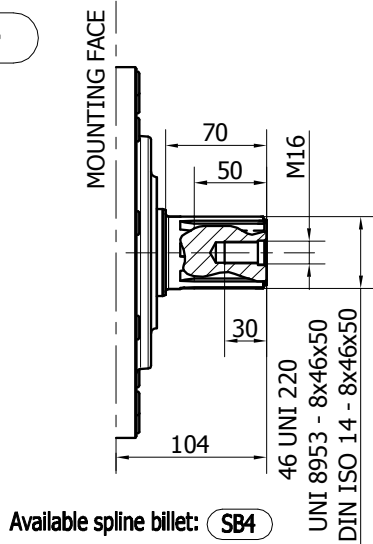
		700	800	850	900	1000	1100	1200	1250	1400
DISPLACEMENT	[cc]	714	792	847	904	992	1116	1192	1247	1332
SPECIFIC TORQUE	[Nm/bar]	11.4	12.6	13.5	14.4	15.8	17.8	19.0	19.8	21.2
MAX. CONT. PRESSURE	[bar]	250	250	250	250	250	250	250	250	250
HYDROSTATIC TEST PRESSURE	[bar]	420	420	420	420	420	420	420	420	420
MAX. CONT. SPEED	[rpm]	500	450	450	450	330	330	300	250	230
PEAK SPEED (***)	[rpm]	580	530	530	530	400	400	350	300	280
MAX. CONT. POWER (****)	[kW]	55	55	55	55	55	55	55	55	55
MAX. POWER	[kW]	80	80	80	80	80	80	80	80	80
MAX. CASE PRESSURE	[bar]	6	6	6	6	6	6	6	6	6
DRY WEIGHT	[kg]	92	92	92	92	92	92	92	92	92
TEMPERATURE RANGE (**)	[°C]	-30÷70	-30÷70	-30÷70	-30÷70	-30÷70	-30÷70	-30÷70	-30÷70	-30÷70

- (*) The standard distributor (D40) is shown. Please refer to distributors section (pag. 176-177) for different distributor interfaces.
- (**) Please refer to the hydraulic fluid recommendations (pag. 10-11).
- (***) Do not exceed maximum power (see pag. 13).
- (****) For motor operation with a continuous duty cycle at maximum continuous power the flushing is usually required. For more information please contact our technical department.

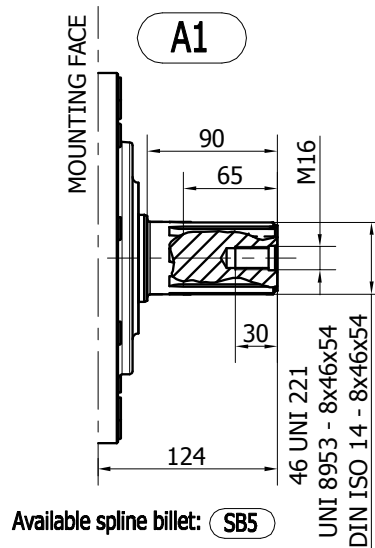
The data specified into the catalogue are for product description purpose only and must not be interpreted as warranted characteristics in legal sense. Italgrou S.r.l. reserves the right to implement modifications without notice. All partial or total reproduction and copy without written authorization of Italgrou S.r.l. is strictly forbidden.

SHAFT CONFIGURATIONS

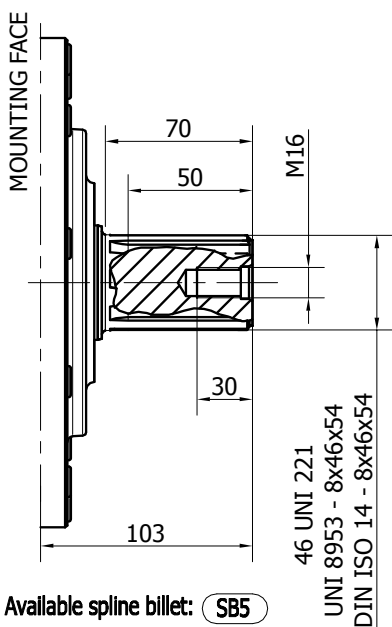
A0



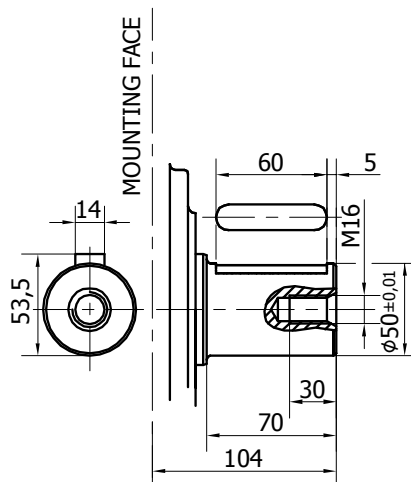
A1



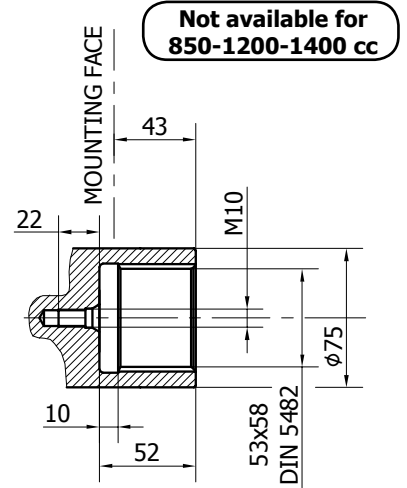
A11



A2

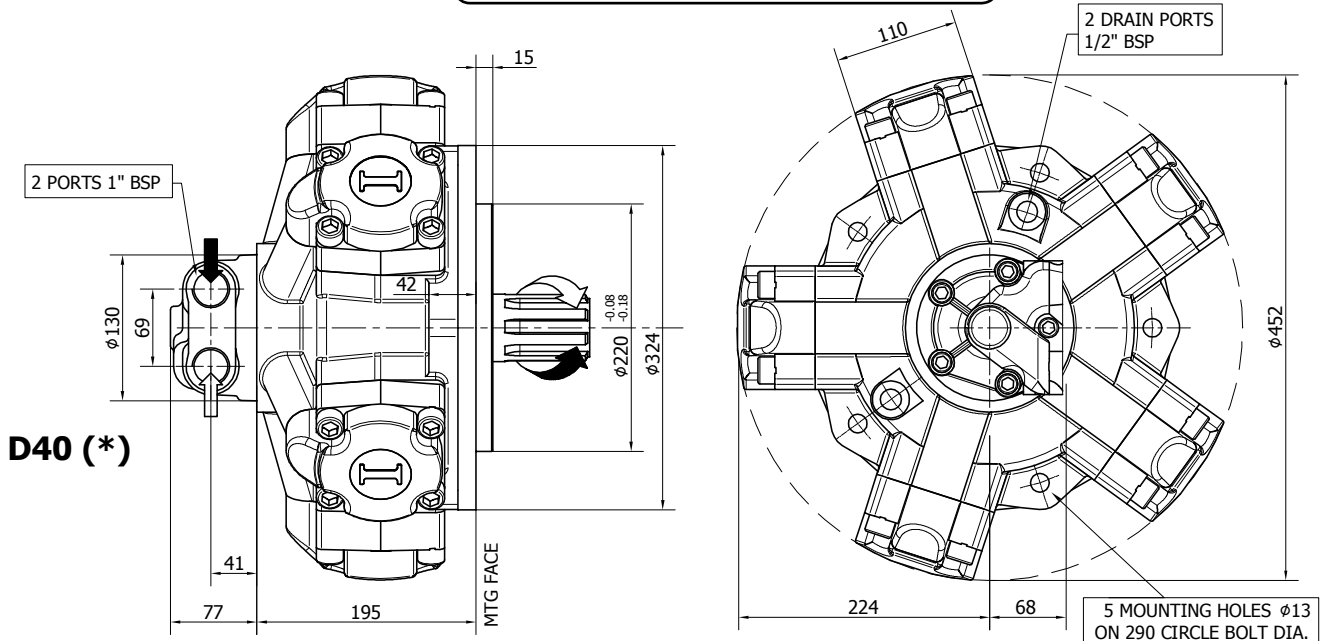


A3



INSTALLATION DRAWING

Available distributor flange: **FL2**
refer to page 184 (distributor fitting D47)



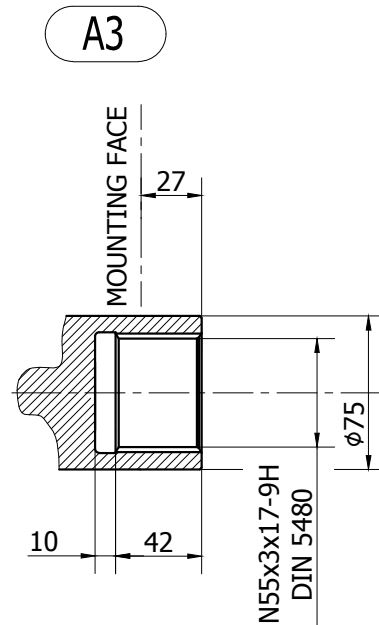
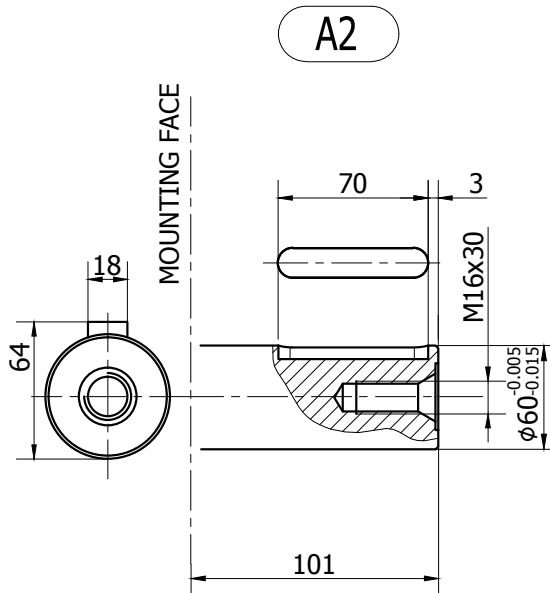
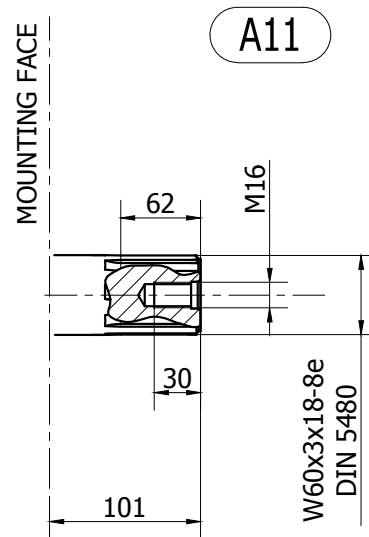
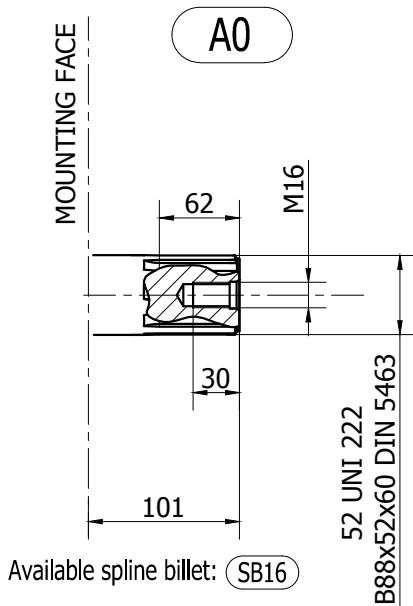
TECHNICAL DATA

		700	800	900	1000	1100	1250
DISPLACEMENT	[cc]	714	792	904	992	1116	1247
SPECIFIC TORQUE	[Nm/bar]	11.4	12.6	14.4	15.8	17.8	19.8
MAX. CONT. PRESSURE	[bar]	250	250	250	250	250	250
HYDROSTATIC TEST PRESSURE	[bar]	420	420	420	420	420	420
MAX. CONT. SPEED	[rpm]	500	450	450	330	330	250
PEAK SPEED (***)	[rpm]	580	530	530	400	400	300
MAX. CONT. POWER (****)	[kW]	55	55	55	55	55	55
MAX. POWER	[kW]	80	80	80	80	80	80
MAX. CASE PRESSURE	[bar]	6	6	6	6	6	6
DRY WEIGHT	[kg]	92	92	92	92	92	92
TEMPERATURE RANGE (**)	[°C]	-30÷70	-30÷70	-30÷70	-30÷70	-30÷70	-30÷70

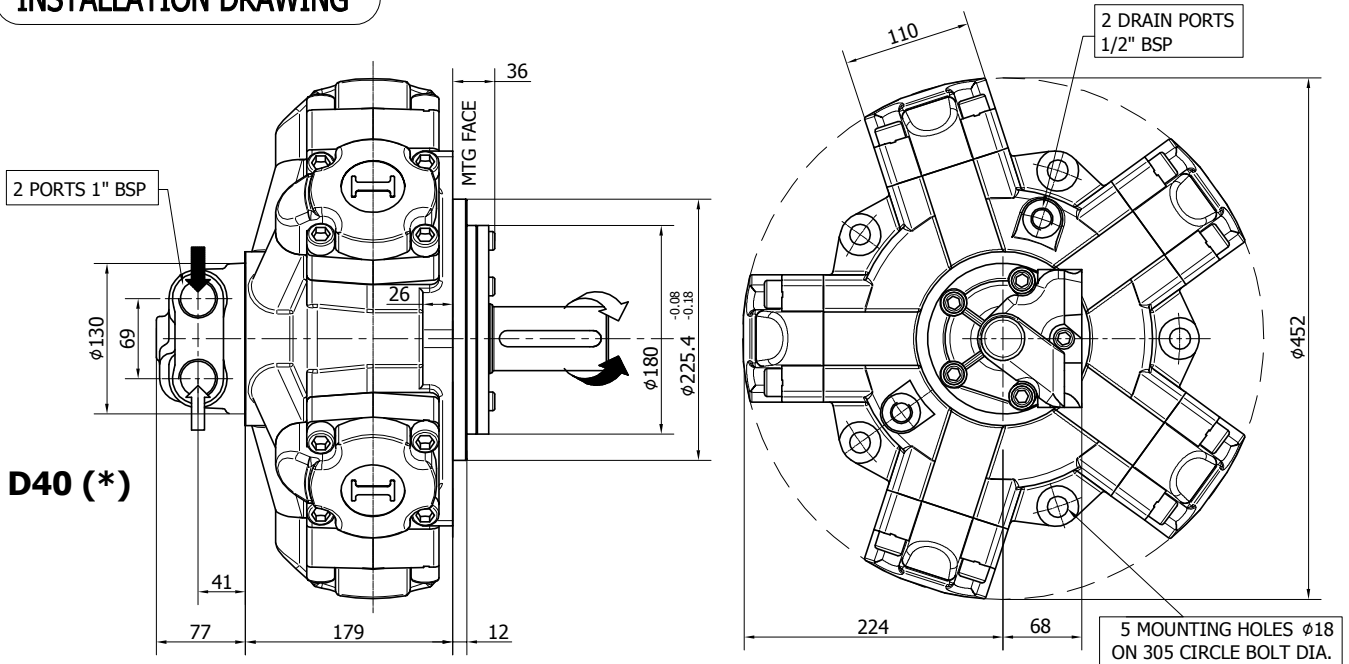
- (*) The standard distributor (D40) is shown. Please refer to distributors section (pag. 176-177) for different distributor interfaces.
- (**) Please refer to the hydraulic fluid recommendations (pag. 10-11).
- (***) Do not exceed maximum power (see pag. 13).
- (****) For motor operation with a continuous duty cycle at maximum continuous power the flushing is usually required. For more information please contact our technical department.

The data specified into the catalogue are for product description purpose only and must not be interpreted as warranted characteristics in legal sense. Italgrou S.r.l. reserves the right to implement modifications without notice. All partial or total reproduction and copy without written authorization of Italgrou S.r.l. is strictly forbidden.

SHAFT CONFIGURATIONS



INSTALLATION DRAWING



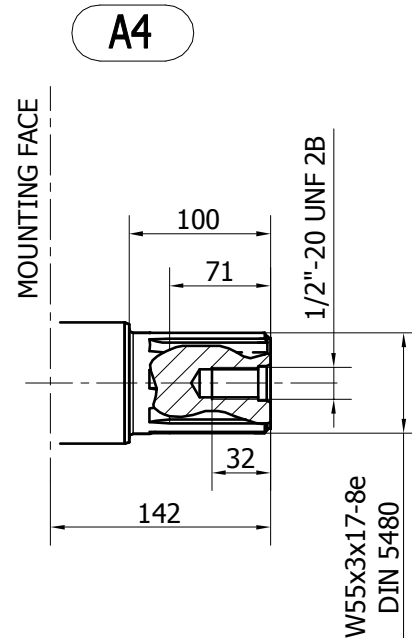
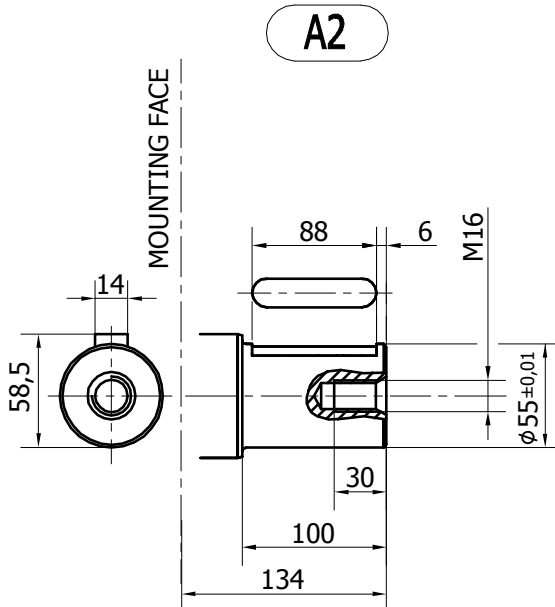
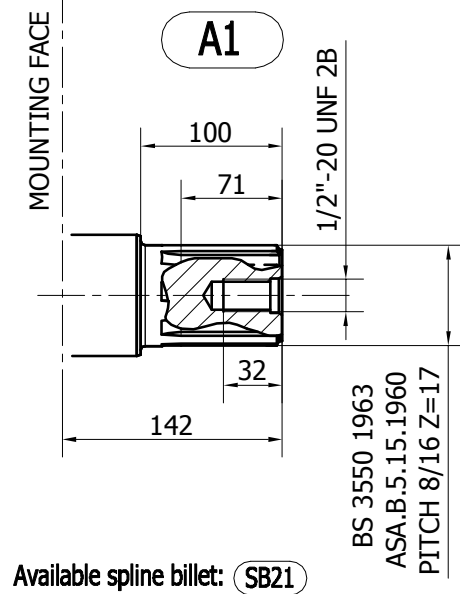
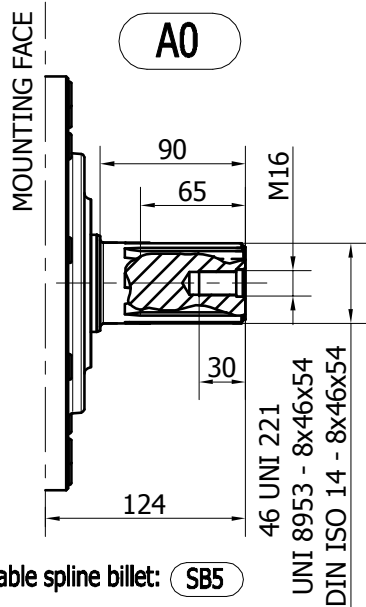
TECHNICAL DATA

		700	800	900	1000	1100	1250
DISPLACEMENT	[cc]	714	792	904	992	1116	1247
SPECIFIC TORQUE	[Nm/bar]	11.4	12.6	14.4	15.8	17.8	19.8
MAX. CONT. PRESSURE	[bar]	250	250	250	250	250	250
HYDROSTATIC TEST PRESSURE	[bar]	420	420	420	420	420	420
MAX. CONT. SPEED	[rpm]	500	450	450	330	330	250
PEAK SPEED (***)	[rpm]	580	530	530	400	400	300
MAX. CONT. POWER (****)	[kW]	55	55	55	55	55	55
MAX. POWER	[kW]	80	80	80	80	80	80
MAX. CASE PRESSURE	[bar]	6	6	6	6	6	6
DRY WEIGHT	[kg]	92	92	92	92	92	92
TEMPERATURE RANGE (**)	[°C]	-30÷70	-30÷70	-30÷70	-30÷70	-30÷70	-30÷70

- (*) The standard distributor (D40) is shown. Please refer to distributors section (pag. 176-177) for different distributor interfaces.
- (**) Please refer to the hydraulic fluid recommendations (pag. 10-11).
- (***) Do not exceed maximum power (see pag. 13).
- (****) For motor operation with a continuous duty cycle at maximum continuous power the flushing is usually required. For more information please contact our technical department.

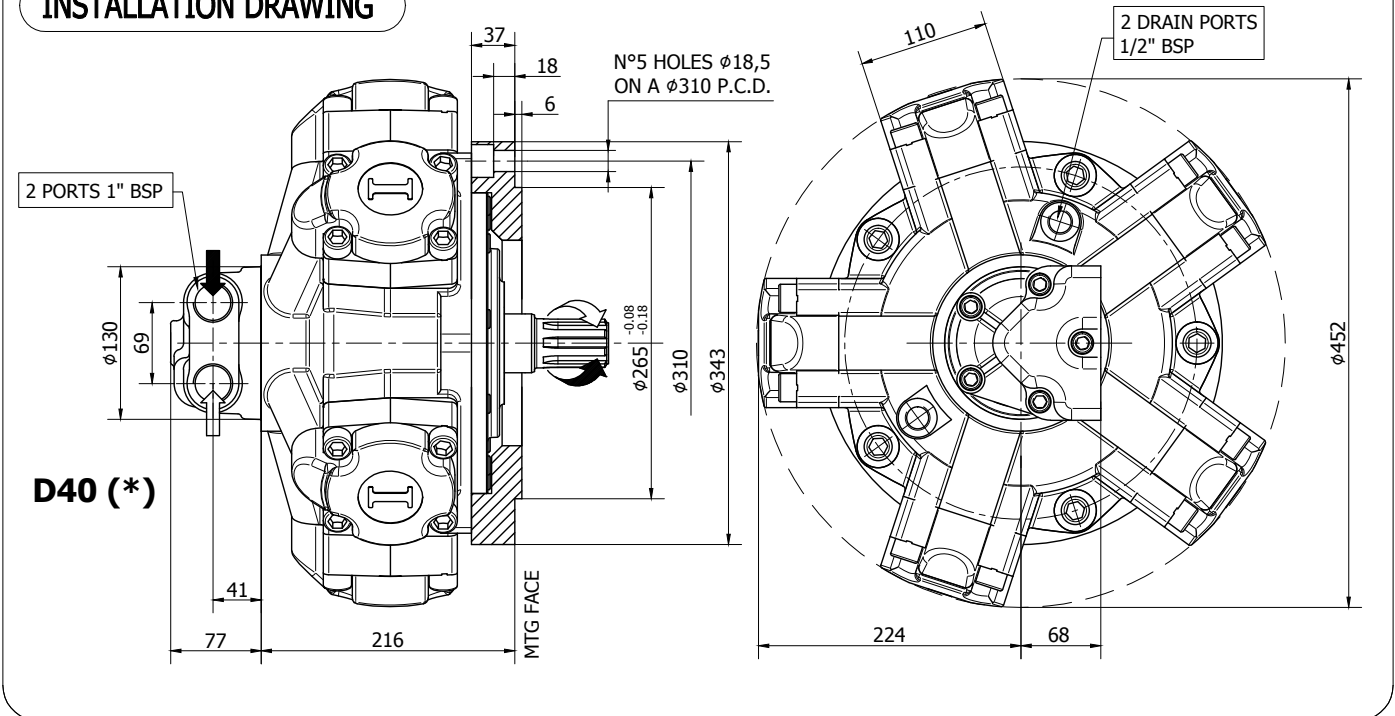
The data specified into the catalogue are for product description purpose only and must not be interpreted as warranted characteristics in legal sense. Italgrou S.r.l. reserves the right to implement modifications without notice. All partial or total reproduction and copy without written authorization of Italgrou S.r.l. is strictly forbidden.

SHAFT CONFIGURATIONS



The data specified into the catalogue are for product description purpose only and must not be interpreted as warranted characteristics in legal sense. Italgrou S.r.l. reserves the right to implement modifications without notice. All partial or total reproduction and copy without written authorization of Italgrou S.r.l. is strictly forbidden.

INSTALLATION DRAWING



TECHNICAL DATA

		700	800	900	1000	1100	1250
DISPLACEMENT	[cc]	714	792	904	992	1116	1247
SPECIFIC TORQUE	[Nm/bar]	11.4	12.6	14.4	15.8	17.8	19.8
MAX. CONT. PRESSURE	[bar]	250	250	250	250	250	250
HYDROSTATIC TEST PRESSURE	[bar]	420	420	420	420	420	420
MAX. CONT. SPEED	[rpm]	500	450	450	330	330	250
PEAK SPEED (***)	[rpm]	580	530	530	400	400	300
MAX. CONT. POWER (****)	[kW]	55	55	55	55	55	55
MAX. POWER	[kW]	80	80	80	80	80	80
MAX. CASE PRESSURE	[bar]	6	6	6	6	6	6
DRY WEIGHT	[kg]	92	92	92	92	92	92
TEMPERATURE RANGE (**)	[°C]	-30÷70	-30÷70	-30÷70	-30÷70	-30÷70	-30÷70

- (*) The standard distributor (D40) is shown. Please refer to distributors section (pag. 176-177) for different distributor interfaces.

- (**) Please refer to the hydraulic fluid recommendations (pag. 10-11).

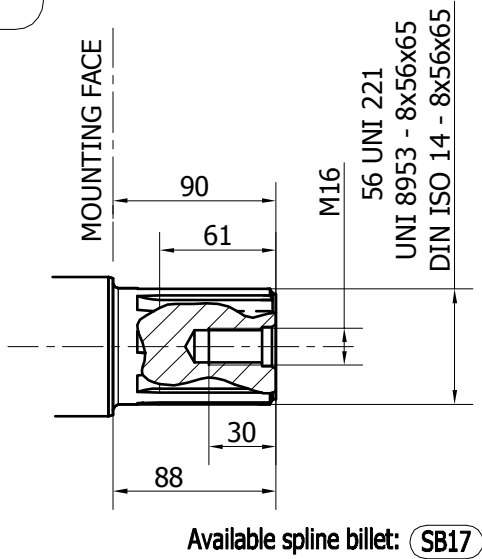
- (***) Do not exceed maximum power (see pag. 13).

- (****) For motor operation with a continuous duty cycle at maximum continuous power the flushing is usually required. For more information please contact our technical department.

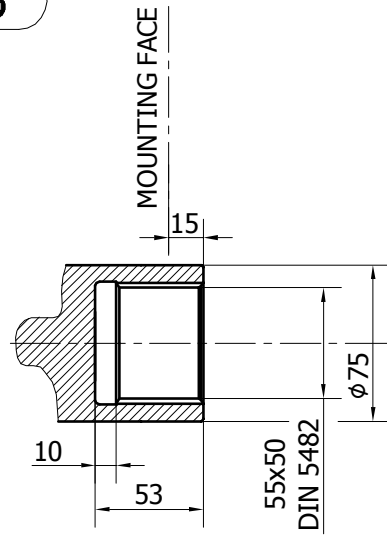
The data specified into the catalogue are for product description purpose only and must not be interpreted as warranted characteristics in legal sense. Italgrou p S.r.l. reserves the right to implement modifications without notice. All partial or total reproduction and copy without written authorization of Italgrou p S.r.l. is strictly forbidden.

SHAFT CONFIGURATIONS

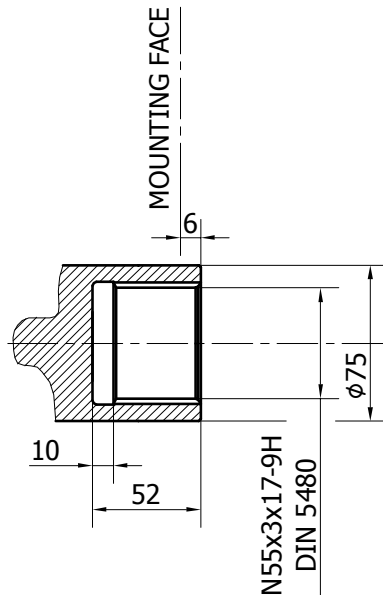
A0



A3

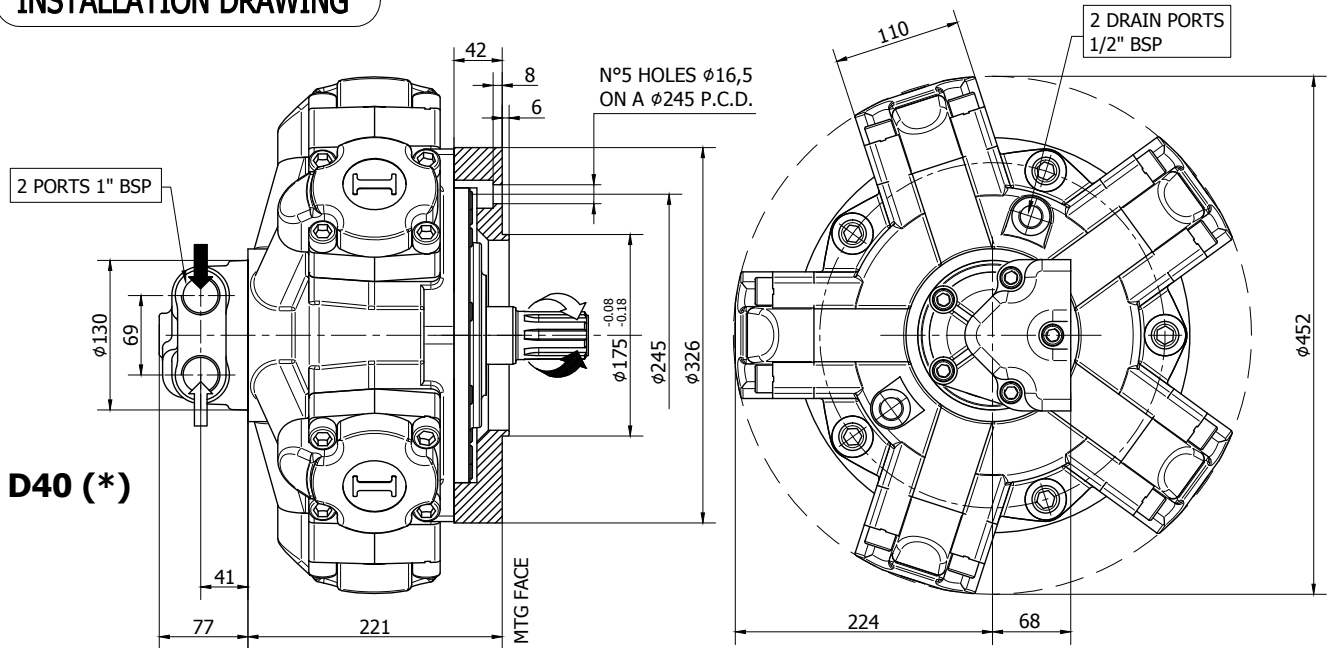


A31



The data specified into the catalogue are for product description purpose only and must not be interpreted as warranted characteristics in legal sense. Italgroup S.r.l. reserves the right to implement modifications without notice. All partial or total reproduction and copy without written authorization of Italgroup S.r.l. is strictly forbidden.

INSTALLATION DRAWING



TECHNICAL DATA

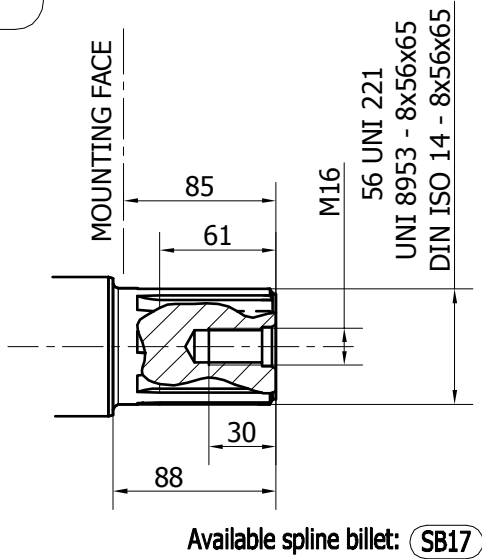
		700	800	900	1000	1100	1250
DISPLACEMENT	[cc]	714	792	904	992	1116	1247
SPECIFIC TORQUE	[Nm/bar]	11.4	12.6	14.4	15.8	17.8	19.8
MAX. CONT. PRESSURE	[bar]	250	250	250	250	250	250
HYDROSTATIC TEST PRESSURE	[bar]	420	420	420	420	420	420
MAX. CONT. SPEED	[rpm]	500	450	450	330	330	250
PEAK SPEED (***)	[rpm]	580	530	530	400	400	300
MAX. CONT. POWER (****)	[kW]	55	55	55	55	55	55
MAX. POWER	[kW]	80	80	80	80	80	80
MAX. CASE PRESSURE	[bar]	6	6	6	6	6	6
DRY WEIGHT	[kg]	92	92	92	92	92	92
TEMPERATURE RANGE (**)	[°C]	-30÷70	-30÷70	-30÷70	-30÷70	-30÷70	-30÷70

- (*) The standard distributor (D40) is shown. Please refer to distributors section (pag. 176-177) for different distributor interfaces.
- (**) Please refer to the hydraulic fluid recommendations (pag. 10-11).
- (***) Do not exceed maximum power (see pag. 13).
- (****) For motor operation with a continuous duty cycle at maximum continuous power the flushing is usually required. For more information please contact our technical department.

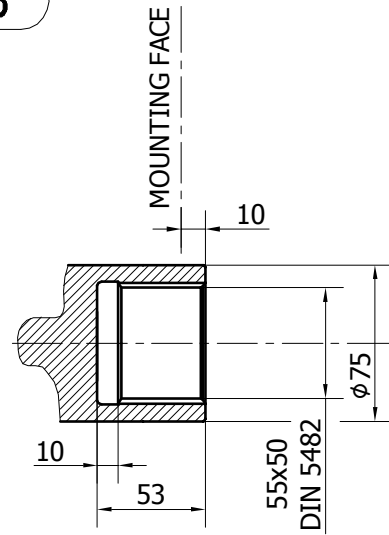
The data specified into the catalogue are for product description purpose only and must not be interpreted as warranted characteristics in legal sense. Italgroup S.r.l. reserves the right to implement modifications without notice. All partial or total reproduction and copy without written authorization of Italgroup S.r.l. is strictly forbidden.

SHAFT CONFIGURATIONS

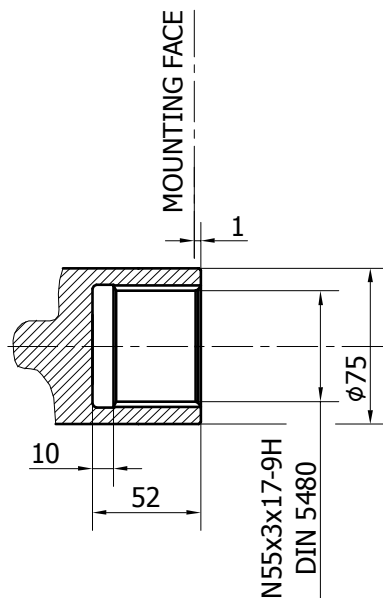
A0



A3



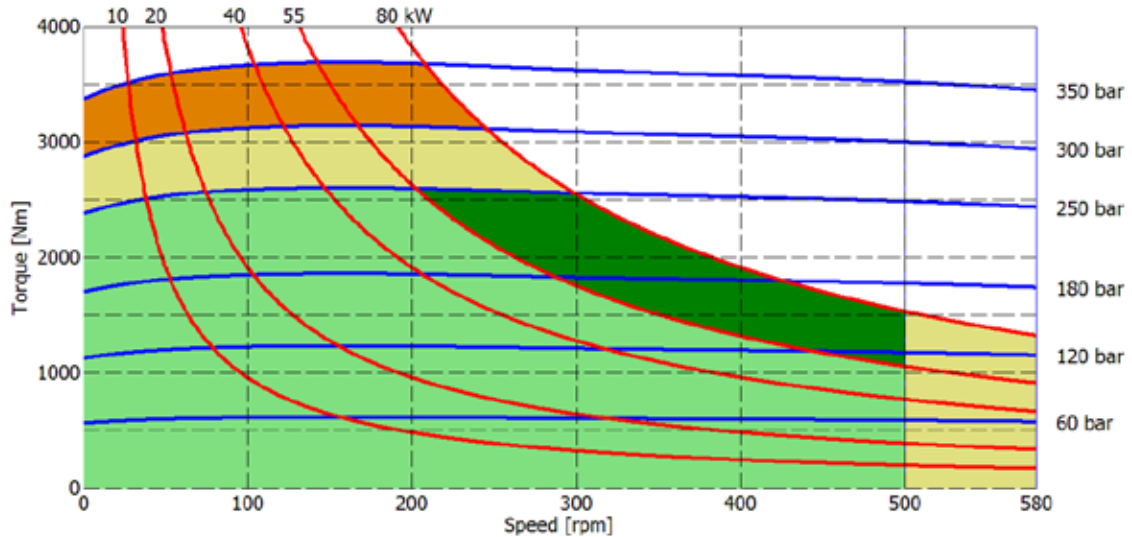
A31



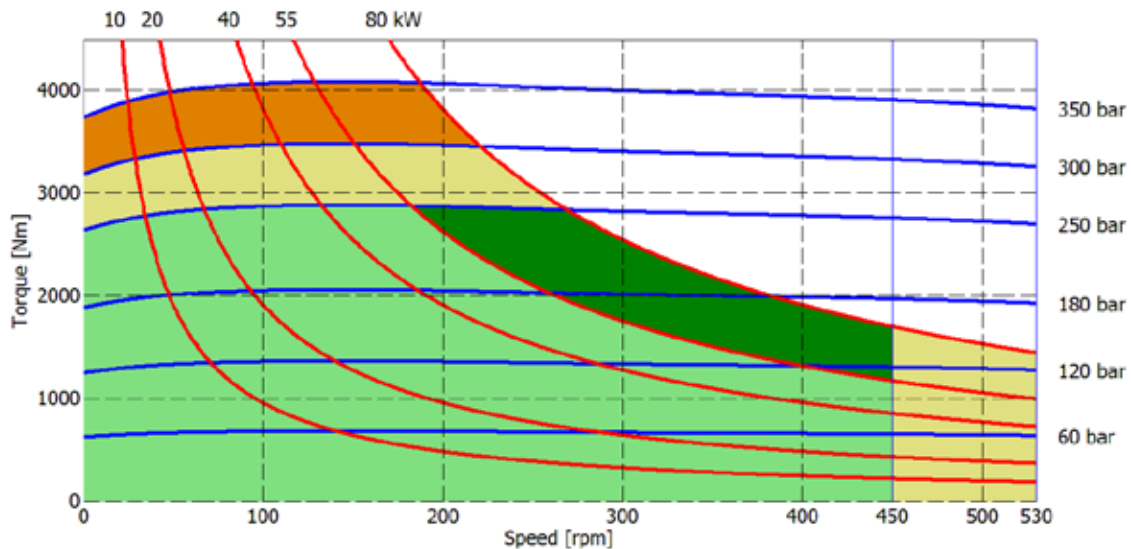
The data specified into the catalogue are for product description purpose only and must not be interpreted as warranted characteristics in legal sense. Italgroup S.r.l. reserves the right to implement modifications without notice. All partial or total reproduction and copy without written authorization of Italgroup S.r.l. is strictly forbidden.

IAM H4 - PERFORMANCE DIAGRAMS

700 cc



800 cc



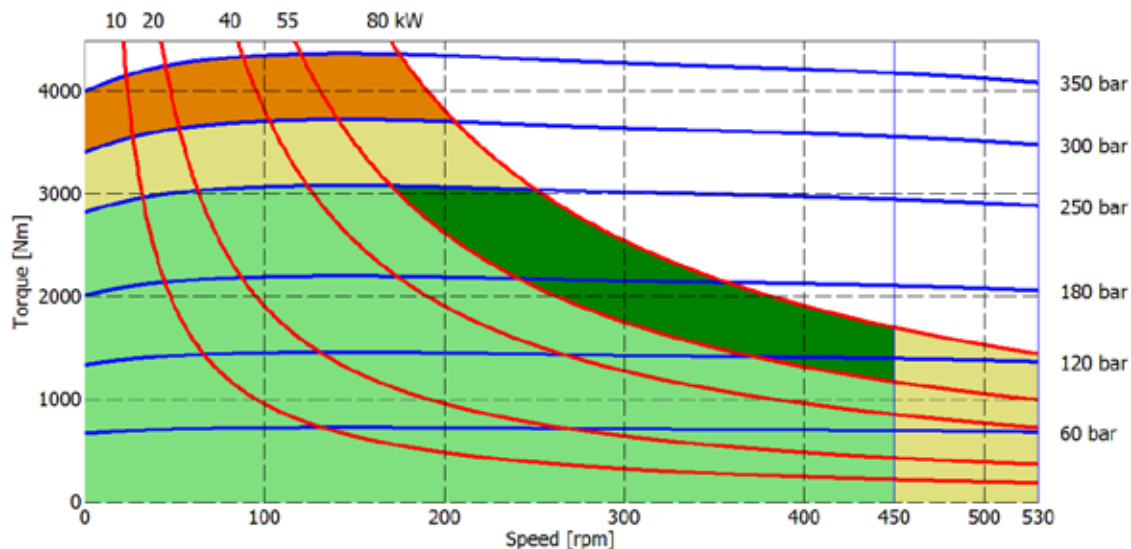
- Continuous operation
- Continuous operation with flushing or intermittent operation (see below for intermittent operation)
- Intermittent operation: permitted for a 15% of duty cycle, for 3 minutes maximum period
- Peak operation: permitted for very short periods (3-5 seconds every 10-15 minutes)

The above diagrams are referring to the hydraulic motor working with a fluid in ideal conditions (viscosity at 40 cSt). In case the working temperature increases and viscosity reach values under the recommended values (see hydraulic fluid recommendations) flushing must be performed or ISO oil grade must be changed. The working temperature must not overcome 70 °C.

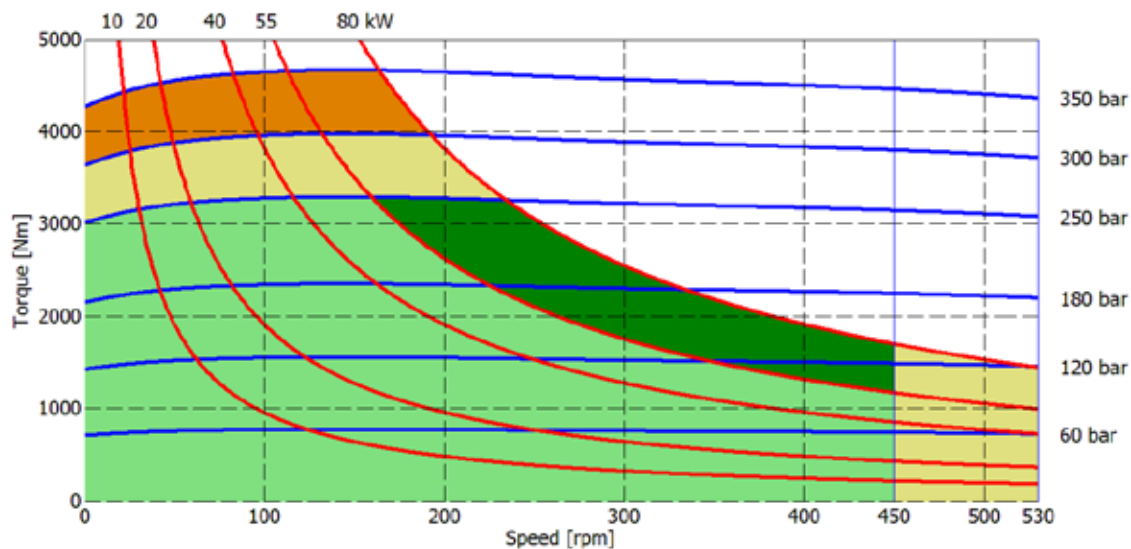
The data specified into the catalogue are for product description purpose only and must not be interpreted as warranted characteristics in legal sense. Italgrou S.r.l. reserves the right to implement modifications without notice. All partial or total reproduction and copy without written authorization of Italgrou S.r.l. is strictly forbidden.

IAM H4 - PERFORMANCE DIAGRAMS

850 cc



900 cc



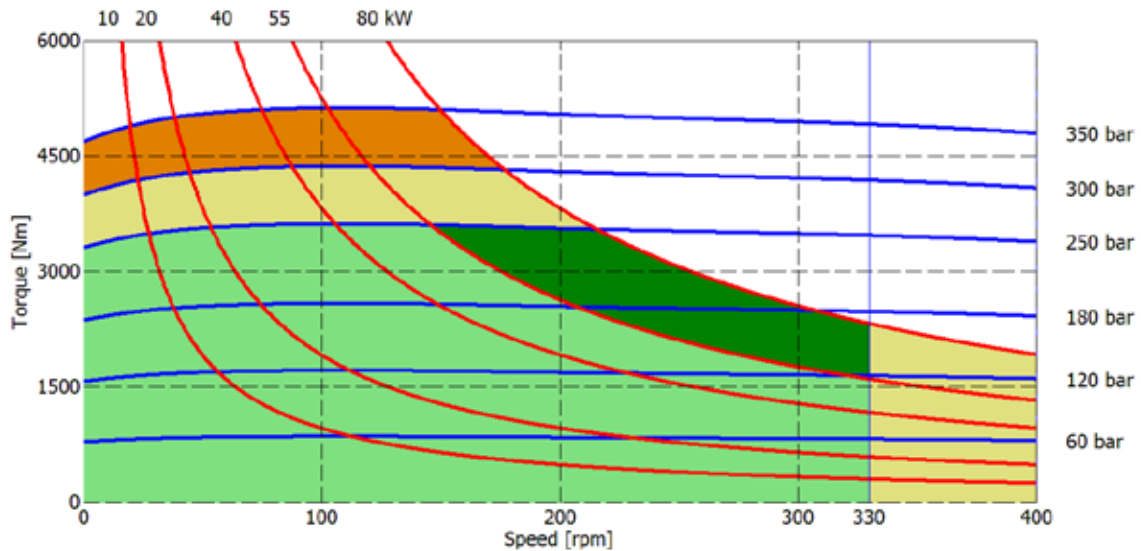
- Continuous operation
- Continuous operation with flushing or intermittent operation (see below for intermittent operation)
- Intermittent operation: permitted for a 15% of duty cycle, for 3 minutes maximum period
- Peak operation: permitted for very short periods (3-5 seconds every 10-15 minutes)

The above diagrams are referring to the hydraulic motor working with a fluid in ideal conditions (viscosity at 40 cSt). In case the working temperature increases and viscosity reach values under the recommended values (see hydraulic fluid recommendations) flushing must be performed or ISO oil grade must be changed. The working temperature must not overcome 70 °C.

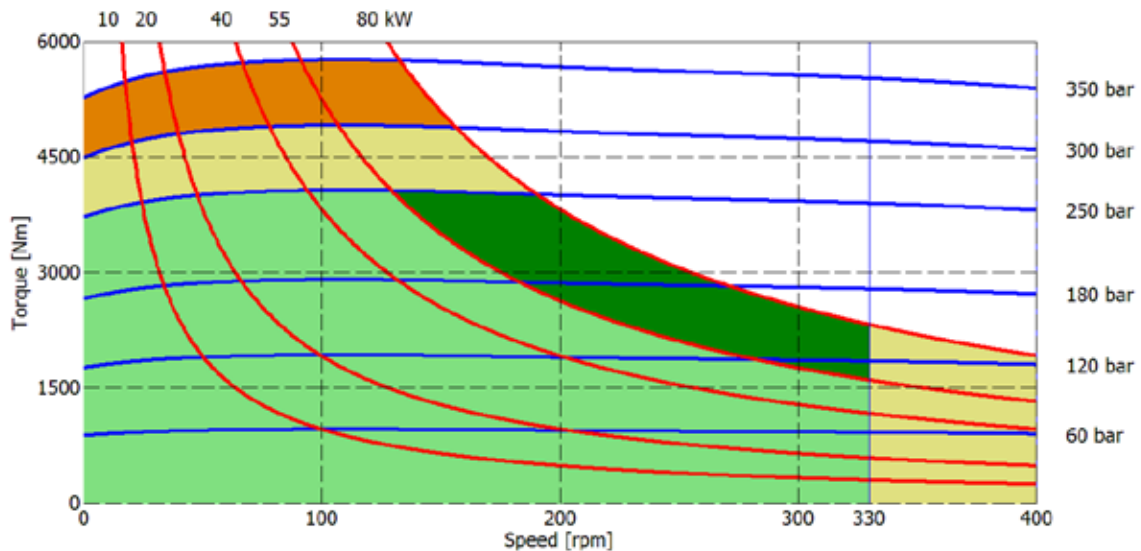
The data specified into the catalogue are for product description purpose only and must not be interpreted as warranted characteristics in legal sense. Italgroup S.r.l. reserves the right to implement modifications without notice. All partial or total reproduction and copy without written authorization of Italgroup S.r.l. is strictly forbidden.

IAM H4 - PERFORMANCE DIAGRAMS

1000 cc



1100 cc



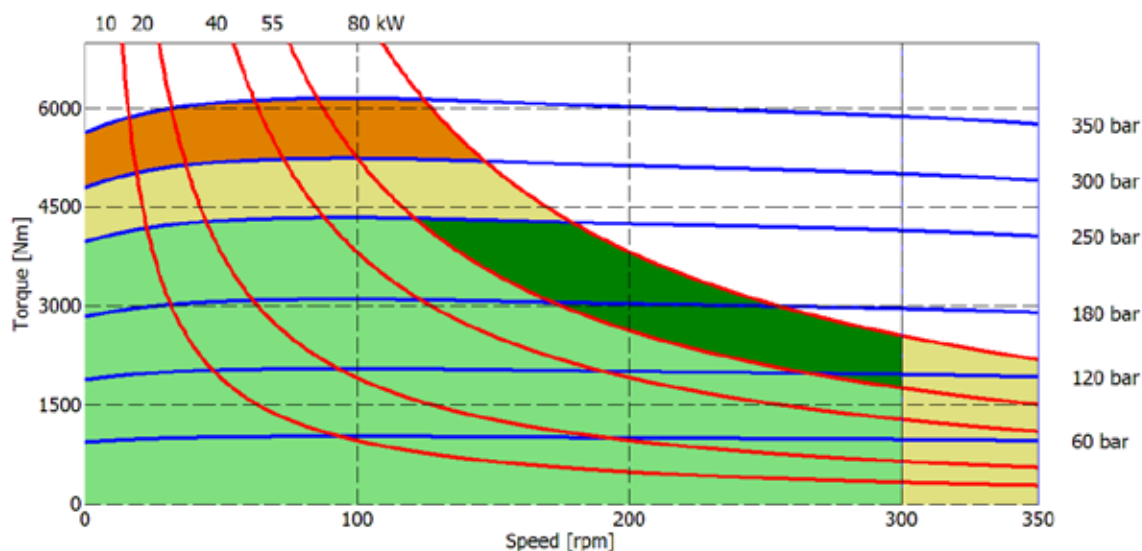
- Continuous operation
- Continuous operation with flushing or intermittent operation (see below for intermittent operation)
- Intermittent operation: permitted for a 15% of duty cycle, for 3 minutes maximum period
- Peak operation: permitted for very short periods (3-5 seconds every 10-15 minutes)

The above diagrams are referring to the hydraulic motor working with a fluid in ideal conditions (viscosity at 40 cSt). In case the working temperature increases and viscosity reach values under the recommended values (see hydraulic fluid recommendations) flushing must be performed or ISO oil grade must be changed. The working temperature must not overcome 70 °C.

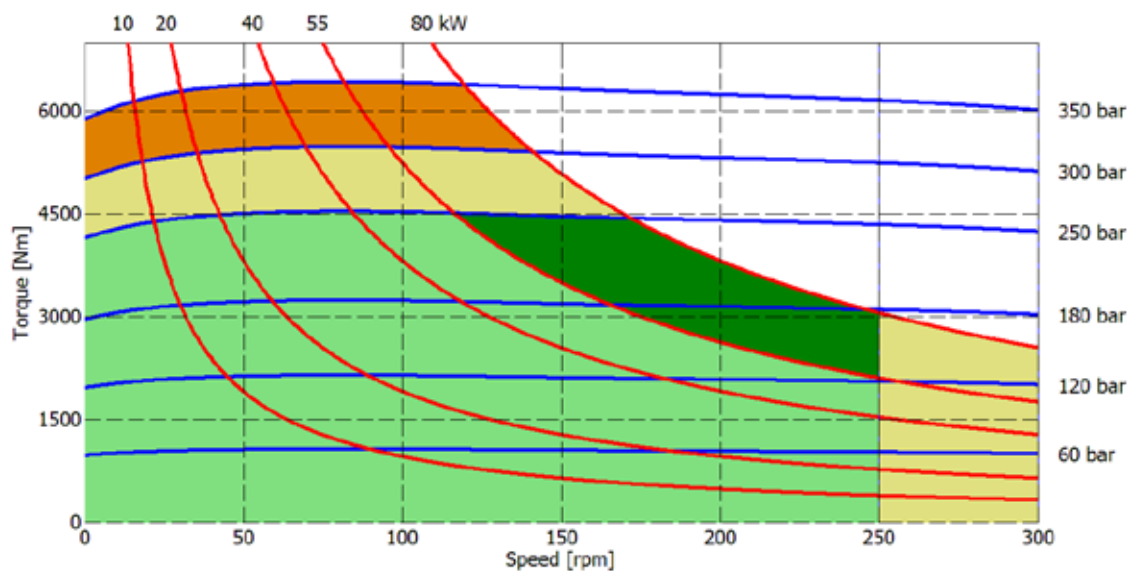
The data specified into the catalogue are for product description purpose only and must not be interpreted as warranted characteristics in legal sense. Italgrou S.r.l. reserves the right to implement modifications without notice. All partial or total reproduction and copy without written authorization of Italgrou S.r.l. is strictly forbidden.

IAM H4 - PERFORMANCE DIAGRAMS

1200 cc



1250 cc

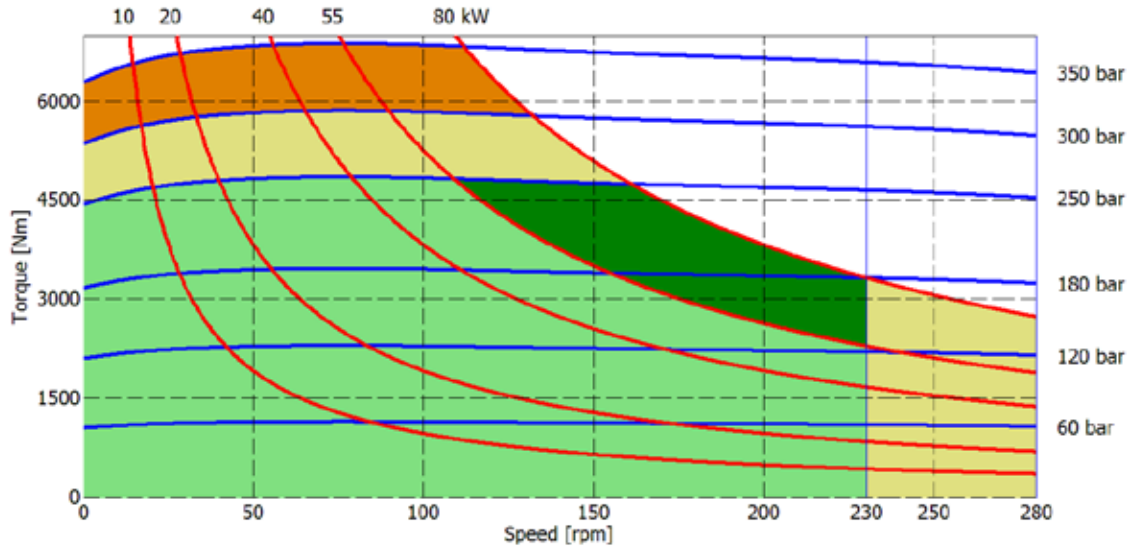


- Continuous operation
- Continuous operation with flushing or intermittent operation (see below for intermittent operation)
- Intermittent operation: permitted for a 15% of duty cycle, for 3 minutes maximum period
- Peak operation: permitted for very short periods (3-5 seconds every 10-15 minutes)

The above diagrams are referring to the hydraulic motor working with a fluid in ideal conditions (viscosity at 40 cSt). In case the working temperature increases and viscosity reach values under the recommended values (see hydraulic fluid recommendations) flushing must be performed or ISO oil grade must be changed. The working temperature must not overcome 70 °C.

The data specified into the catalogue are for product description purpose only and must not be interpreted as warranted characteristics in legal sense. Italgroup S.r.l. reserves the right to implement modifications without notice. All partial or total reproduction and copy without written authorization of Italgroup S.r.l. is strictly forbidden.

1400 cc

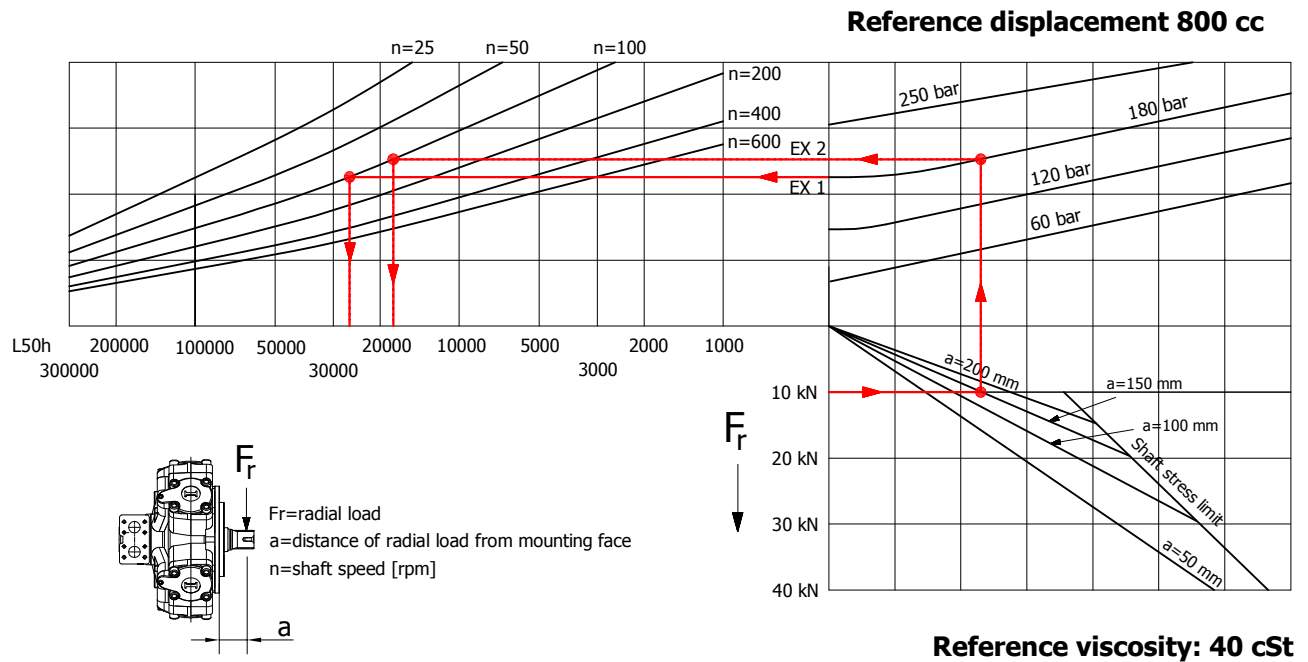


- Continuous operation
- Continuous operation with flushing or intermittent operation (see below for intermittent operation)
- Intermittent operation: permitted for a 15% of duty cycle, for 3 minutes maximum period
- Peak operation: permitted for very short periods (3-5 seconds every 10-15 minutes)

The above diagrams are referring to the hydraulic motor working with a fluid in ideal conditions (viscosity at 40 cSt). In case the working temperature increases and viscosity reach values under the recommended values (see hydraulic fluid recommendations) flushing must be performed or ISO oil grade must be changed. The working temperature must not overcome 70 °C.

The data specified into the catalogue are for product description purpose only and must not be interpreted as warranted characteristics in legal sense. Italgrou S.r.l. reserves the right to implement modifications without notice. All partial or total reproduction and copy without written authorization of Italgrou S.r.l. is strictly forbidden.

BEARING LIFE



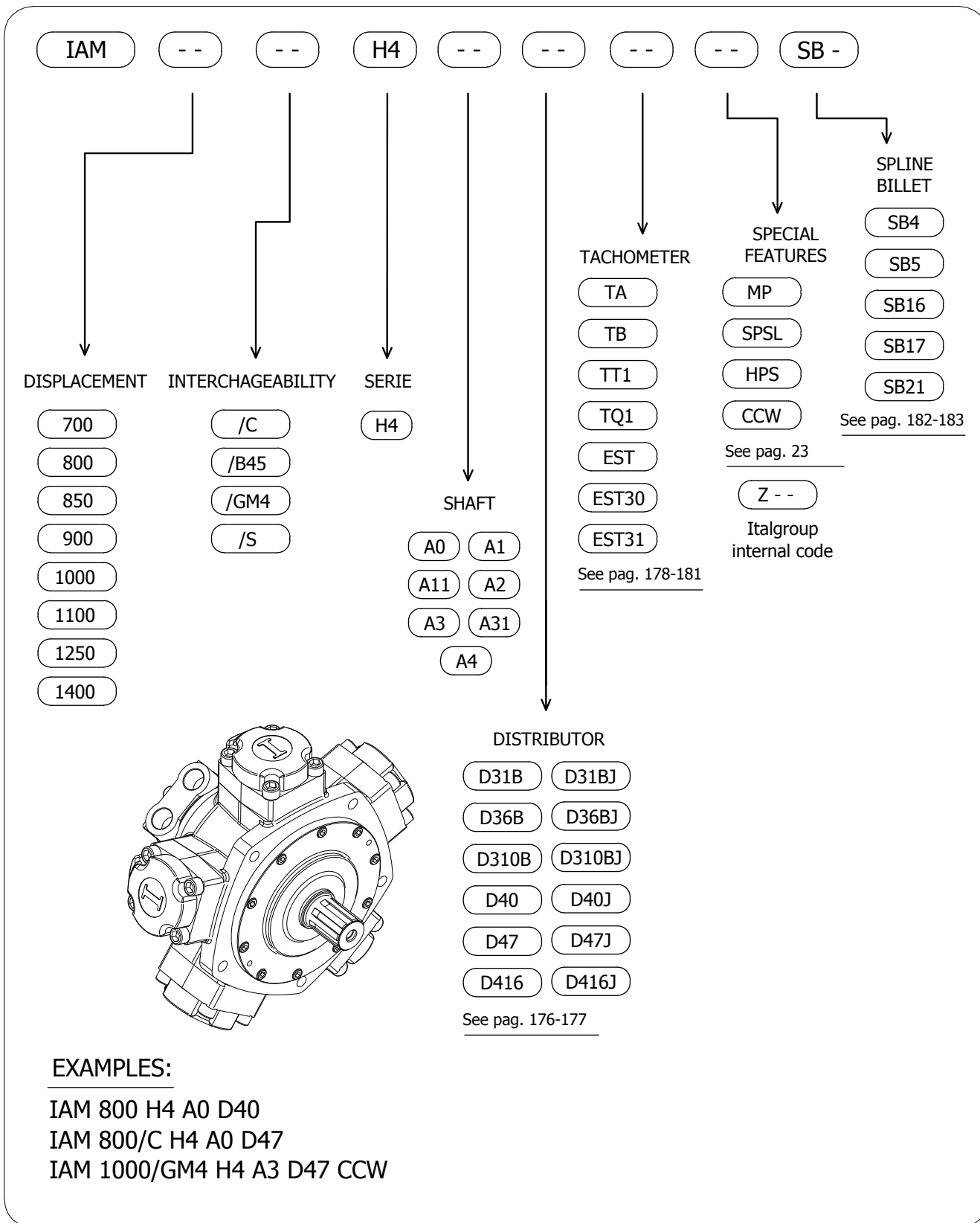
Example:

We suppose (EX1): $p=180$ [bar], $n=100$ [rpm]; we obtain an average lifetime of 25000 [h].

If we suppose (EX2): $F_r=10$ [kN], $a=150$ [mm], $n=100$ [rpm] and $p=180$ [bar] we obtain an average lifetime of 18000 [h].

The above data are referring to the IAM H4 series motors, displacement 800 cc.

IAM H4 - ORDERING CODE



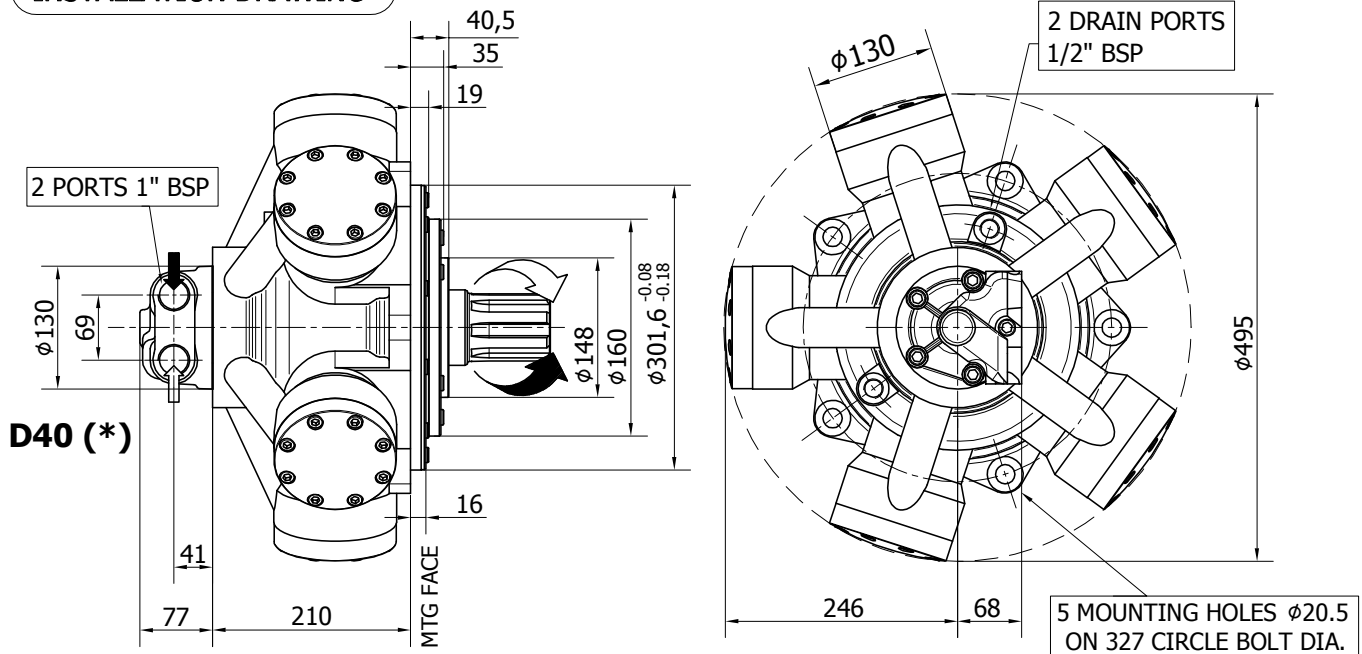
ITALGROUP SRL
IAM SERIES - IAM H45

GENERAL CATALOGUE

INDEX - IAM H45

<u>IAM H45 - INSTALLATION DRAWING</u>	Pag	112 - 113
<u>IAM H45/C - INSTALLATION DRAWING</u>	"	114 - 115
<u>IAM H45 - PERFORMANCE DRAWINGS</u>	"	116 - 118
<u>IAM H45 - ORDERING CODE</u>	"	119

INSTALLATION DRAWING



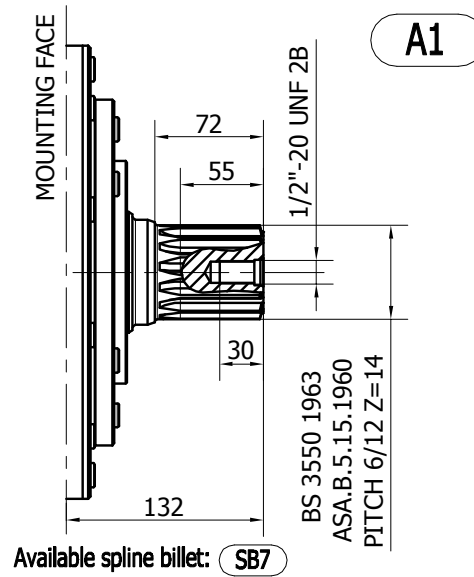
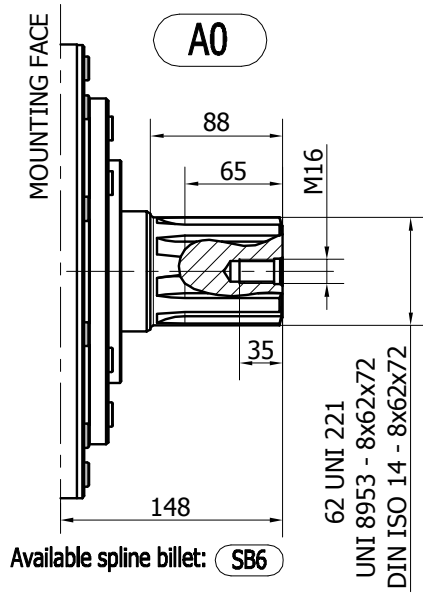
TECHNICAL DATA

		1100	1400	1600	1800
DISPLACEMENT	[cc]	1183	1376	1648	1815
SPECIFIC TORQUE	[Nm/bar]	18.8	21.9	26.2	28.9
MAX. CONT. PRESSURE	[bar]	250	250	250	250
HYDROSTATIC TEST PRESSURE	[bar]	420	420	420	420
MAX. CONT. SPEED	[rpm]	350	300	275	250
PEAK SPEED (***)	[rpm]	400	350	325	300
MAX. CONT. POWER (****)	[kW]	85	85	85	85
MAX. POWER	[kW]	120	120	120	120
MAX. CASE PRESSURE	[bar]	6	6	6	6
DRY WEIGHT	[kg]	118	118	118	118
TEMPERATURE RANGE (**)	[°C]	-30÷70	-30÷70	-30÷70	-30÷70

- (*) The standard distributor (D40) is shown. Please refer to distributors section (pag. 176-177) for different distributor interfaces.
- (**) Please refer to the hydraulic fluid recommendations (pag. 10-11).
- (***) Do not exceed maximum power (see pag. 13).
- (****) For motor operation with a continuous duty cycle at maximum continuous power the flushing is usually required. For more information please contact our technical department.

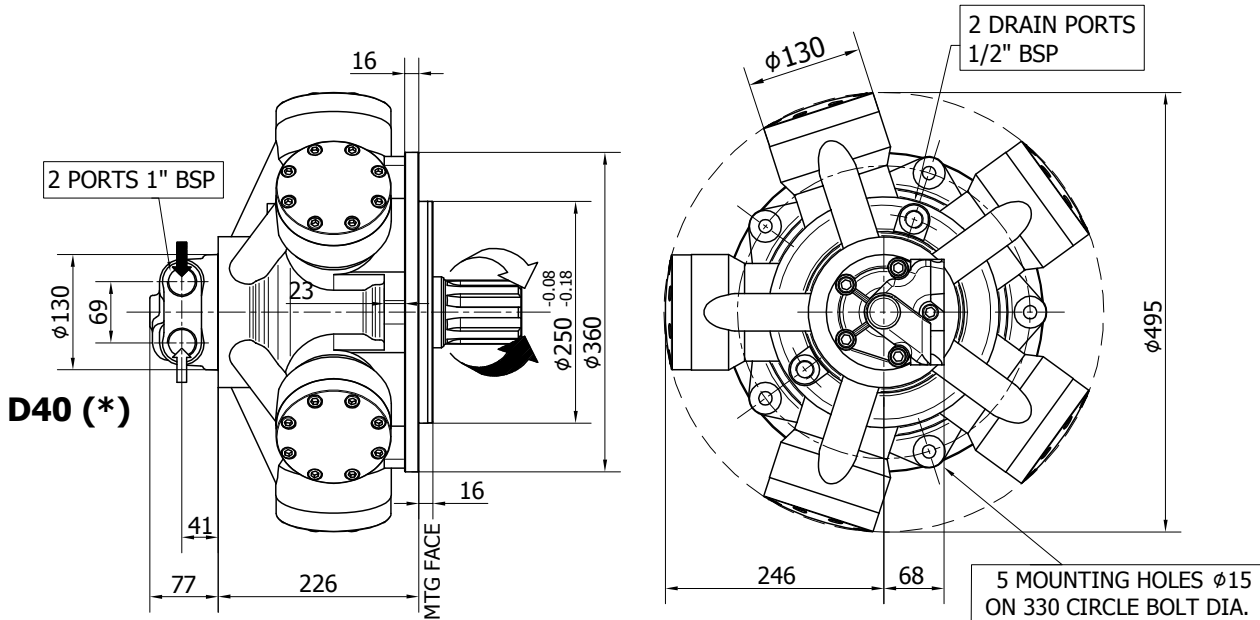
The data specified into the catalogue are for product description purpose only and must not be interpreted as warranted characteristics in legal sense. Italgrou S.r.l. reserves the right to implement modifications without notice. All partial or total reproduction and copy without written authorization of Italgrou S.r.l. is strictly forbidden.

SHAFT CONFIGURATIONS



INSTALLATION DRAWING

Available distributor flange: **FL4**
refer to page 184 (distributor fitting D75)



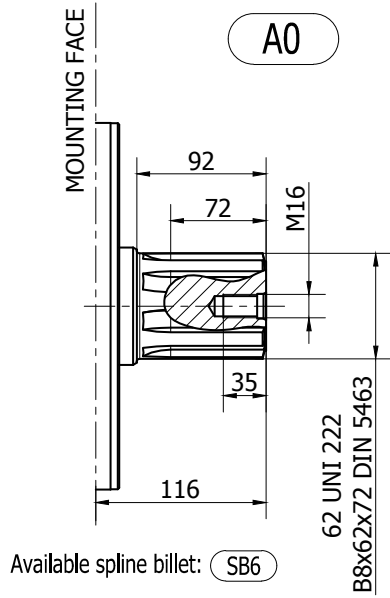
TECHNICAL DATA

		1100	1400	1600
DISPLACEMENT	[cc]	1183	1376	1648
SPECIFIC TORQUE	[Nm/bar]	18.8	21.9	26.2
MAX. CONT. PRESSURE	[bar]	250	250	250
HYDROSTATIC TEST PRESSURE	[bar]	420	420	420
MAX. CONT. SPEED	[rpm]	350	300	275
PEAK SPEED (***)	[rpm]	400	350	325
MAX. CONT. POWER (****)	[kW]	85	85	85
MAX. POWER	[kW]	120	120	120
MAX. CASE PRESSURE	[bar]	6	6	6
DRY WEIGHT	[kg]	118	118	118
TEMPERATURE RANGE (**)	[°C]	-30÷70	-30÷70	-30÷70

- (*) The standard distributor (D40) is shown. Please refer to distributors section (pag. 176-177) for different distributor interfaces.
- (**) Please refer to the hydraulic fluid recommendations (pag. 10-11).
- (***) Do not exceed maximum power (see pag. 13).
- (****) For motor operation with a continuous duty cycle at maximum continuous power the flushing is usually required. For more information please contact our technical department.

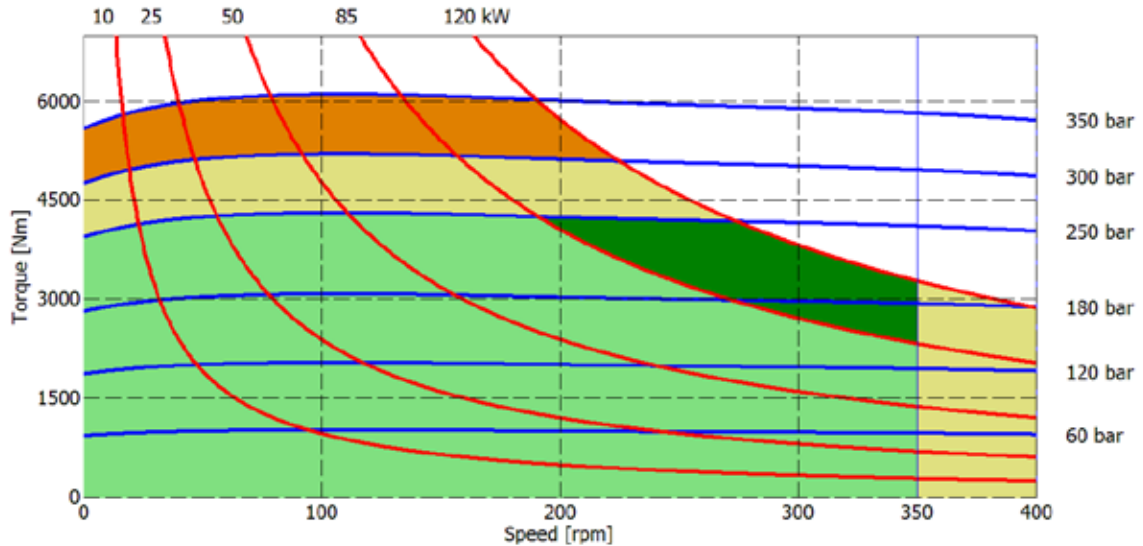
The data specified into the catalogue are for product description purpose only and must not be interpreted as warranted characteristics in legal sense. Italgrou S.r.l. reserves the right to implement modifications without notice. All partial or total reproduction and copy without written authorization of Italgrou S.r.l. is strictly forbidden.

SHAFT CONFIGURATIONS

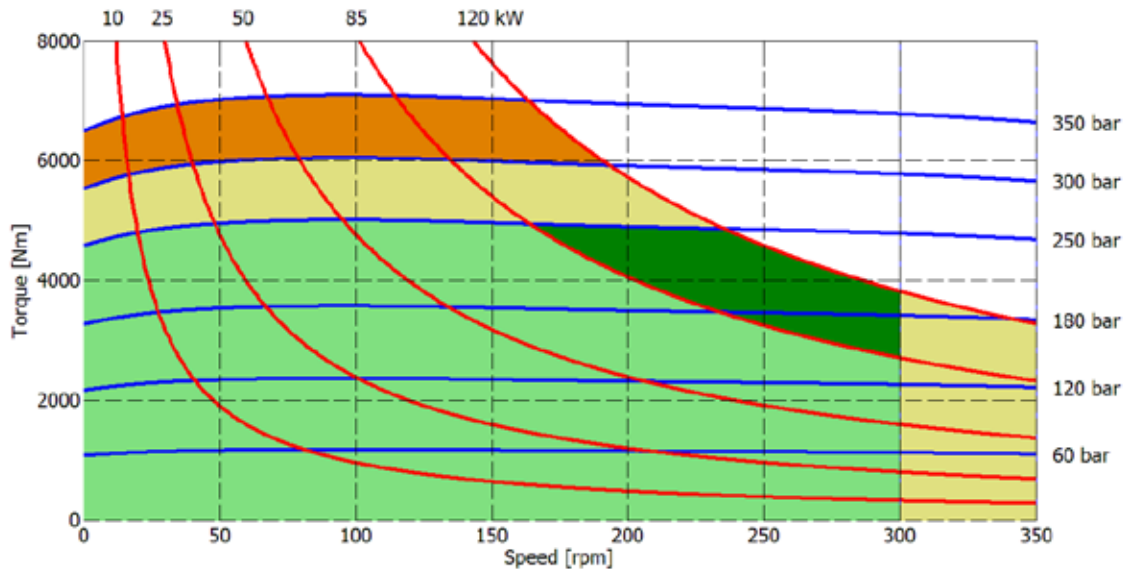


IAM H45 - PERFORMANCE DIAGRAMS

1100 cc



1400 cc



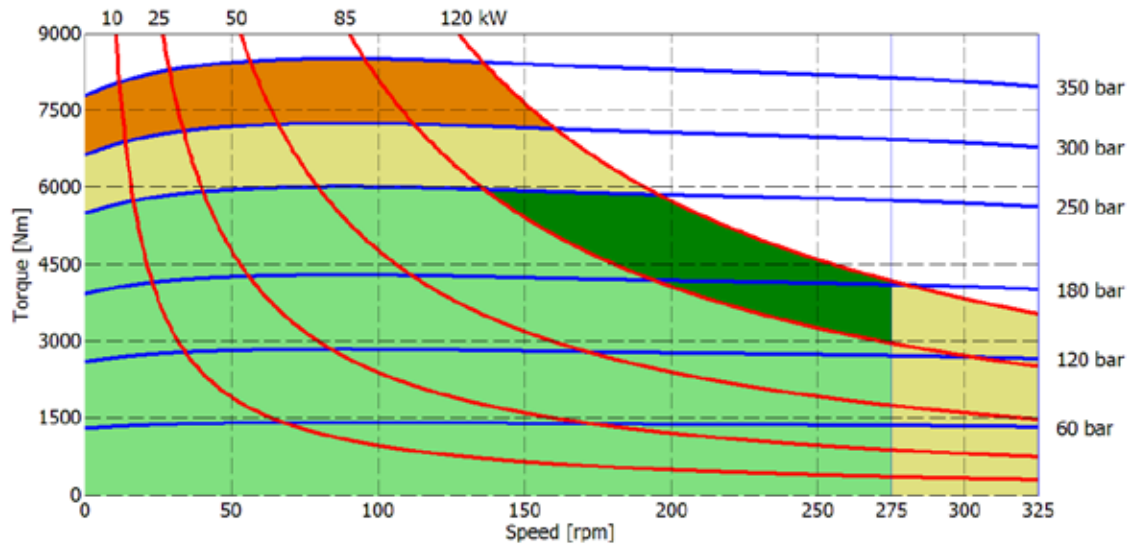
- Continuous operation
- Continuous operation with flushing or intermittent operation (see below for intermittent operation)
- Intermittent operation: permitted for a 15% of duty cycle, for 3 minutes maximum period
- Peak operation: permitted for very short periods (3-5 seconds every 10-15 minutes)

The above diagrams are referring to the hydraulic motor working with a fluid in ideal conditions (viscosity at 40 cSt). In case the working temperature increases and viscosity reach values under the recommended values (see hydraulic fluid recommendations) flushing must be performed or ISO oil grade must be changed. The working temperature must not overcome 70 °C.

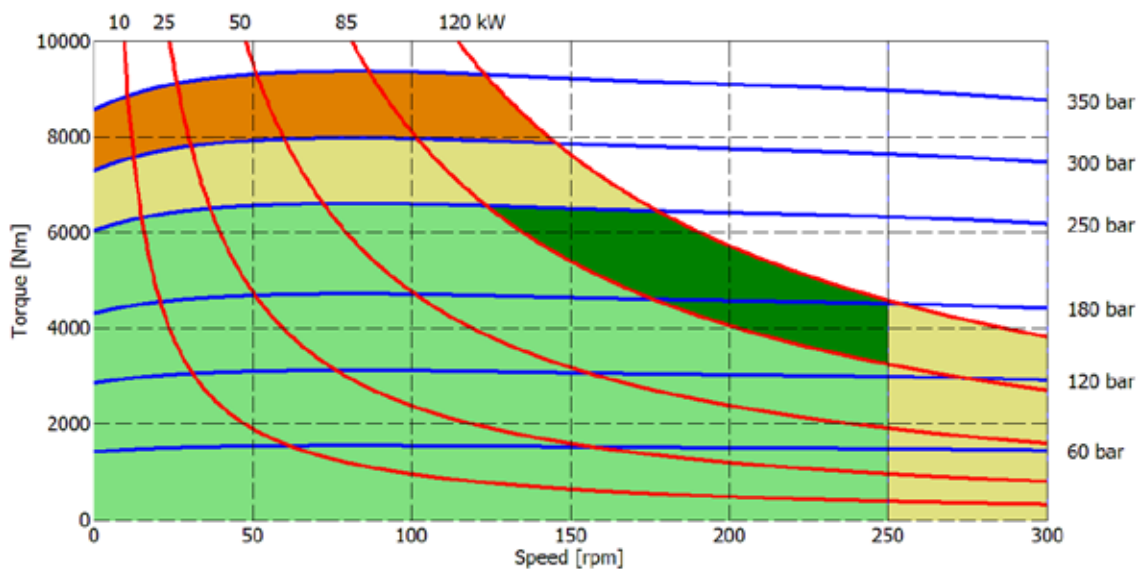
The data specified into the catalogue are for product description purpose only and must not be interpreted as warranted characteristics in legal sense. Italgrou S.r.l. reserves the right to implement modifications without notice. All partial or total reproduction and copy without written authorization of Italgrou S.r.l. is strictly forbidden.



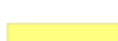

IAM H45 - PERFORMANCE DIAGRAMS

1600 cc



1800 cc



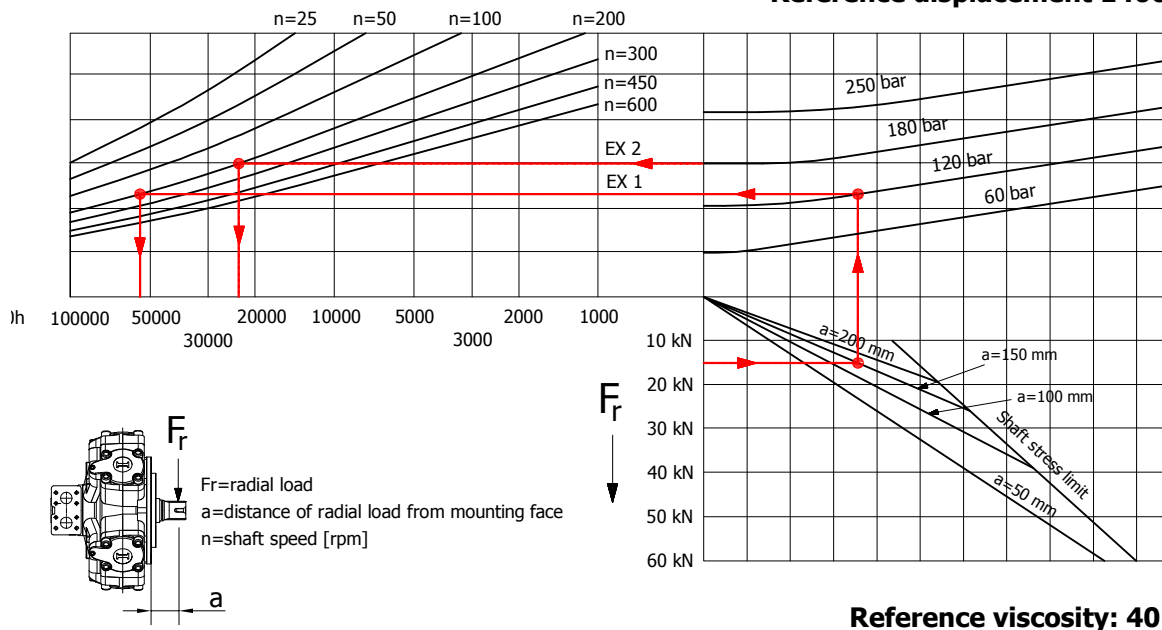
-  Continuous operation
-  Continuous operation with flushing or intermittent operation (see below for intermittent operation)
-  Intermittent operation: permitted for a 15% of duty cycle, for 3 minutes maximum period
-  Peak operation: permitted for very short periods (3-5 seconds every 10-15 minutes)

The above diagrams are referring to the hydraulic motor working with a fluid in ideal conditions (viscosity at 40 cSt). In case the working temperature increases and viscosity reach values under the recommended values (see hydraulic fluid recommendations) flushing must be performed or ISO oil grade must be changed. The working temperature must not overcome 70 °C.

The data specified into the catalogue are for product description purpose only and must not be interpreted as warranted characteristics in legal sense. ItalgrouP S.r.l. reserves the right to implement modifications without notice. All partial or total reproduction and copy without written authorization of ItalgrouP S.r.l. is strictly forbidden.

BEARING LIFE

Reference displacement 1400 cc



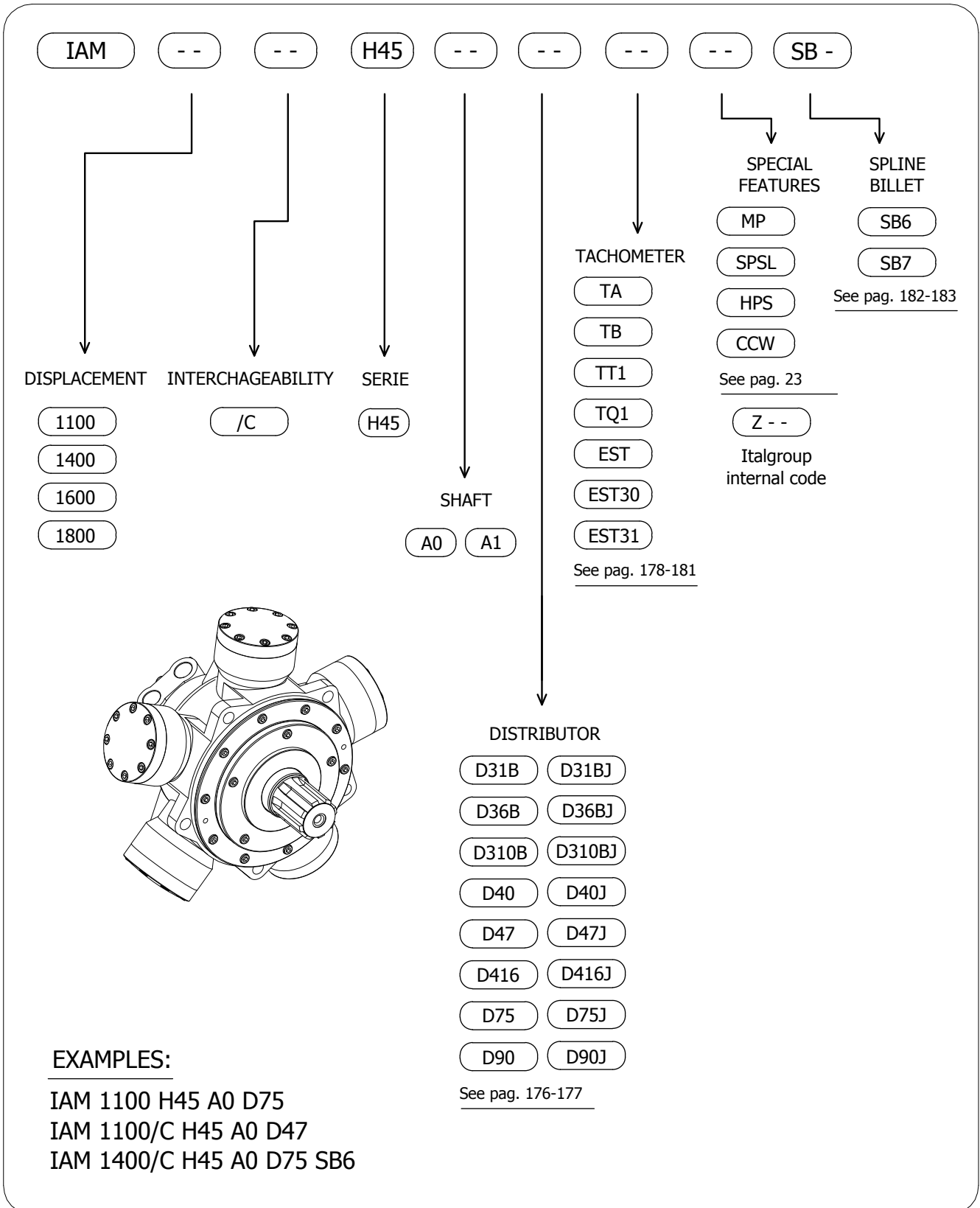
Example:

We suppose (EX2): $p=180$ [bar], $n=200$ [rpm]; we obtain an average lifetime of 22000 [h].

If we suppose (EX1): $F_r=15$ [kN], $a=150$ [mm], $n=200$ [rpm] and $p=120$ [bar] we obtain an average lifetime of 51000 [h].

The above data are referring to the IAM H45 series motors, displacement 1400 cc.

IAM H45 - ORDERING CODE



The data specified into the catalogue are for product description purpose only and must not be interpreted as warranted characteristics in legal sense. Italgroup S.r.l. reserves the right to implement modifications without notice. All partial or total reproduction and copy without written authorization of Italgroup S.r.l. is strictly forbidden.

CONTACT US

Italgroup S.r.l.
Via Pacinotti 20/22
41010 - Gaggio di Piano (Modena) – Italy

Tel. +39 059 92 42 57
Fax +39 059 92 01 13
e-mail: italgroup@italgroup.eu
internet: <http://www.italgroup.eu>

REACH US



Europe

Austria
Belgium
Croatia
Czech Republic
Cyprus
Denmark
Faroe Islands
France
Finland
Germany
Greece
Iceland
Italy
Netherland
Norway
Poland
Portugal
Russia
Slovenia
Spain
Sweden
Switzerland
Turkey
Ukraina
United Kingdom

Africa

Egypt
South Africa
Tunisia

America

Argentina
Brazil
Canada
Chile
Mexico
Peru
USA
Colombia

Asia

China
Hong Kong
India
Indonesia
Iran
Israel
Philippines
Russia
Belarus
Singapore
South Korea
Thailand
Taiwan
United Arab Emirates
Vietnam

Oceania

Australia
New Zeland

