

Italgroup[®]

HYDRAULIC MOTORS

ITALY



IAM

Single displacement hydraulic motors

The data specified into the catalogue are for product description purpose only and must not be interpreted as warranted characteristics in legal sense.
ItalgrouP S.r.l. reserves the right to implement modifications without notice.

All partial or total reproduction and copy without written authorization of ItalgrouP S.r.l. is strictly forbidden.

©2016 ITALGROUP S.R.L. - ALL RIGHTS RESERVED -

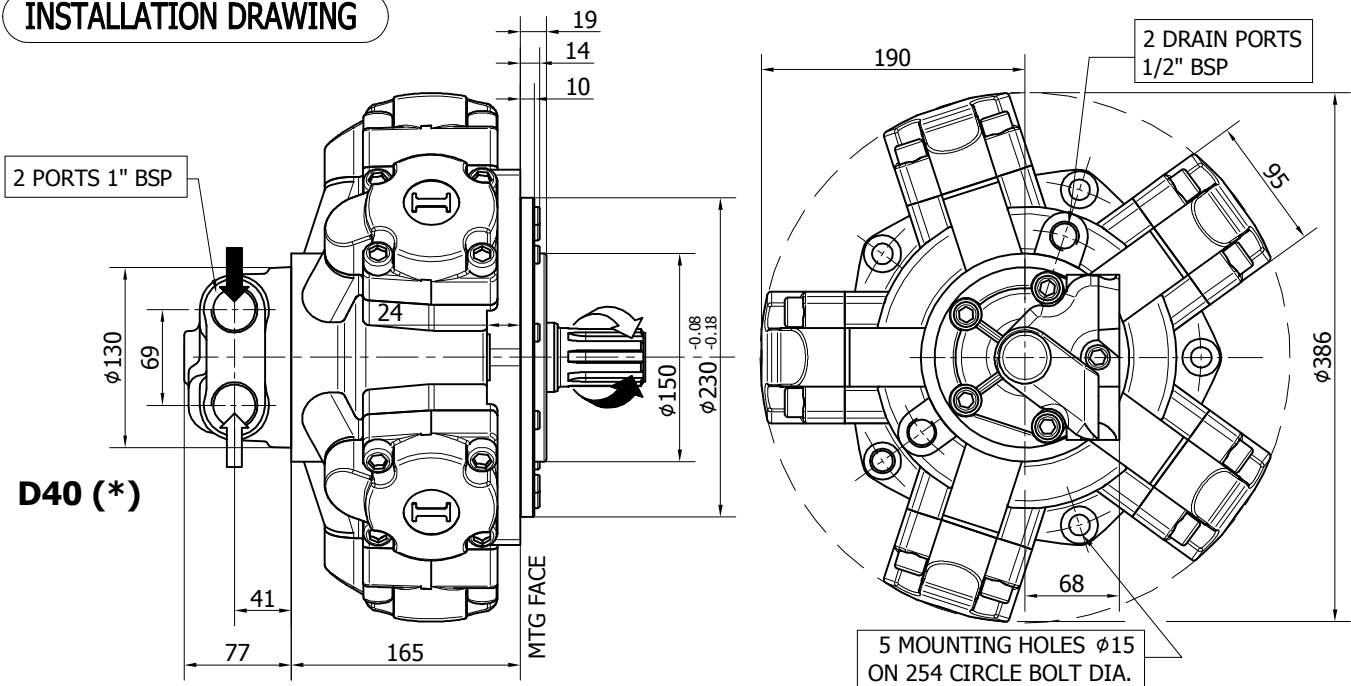
**COMPANY WITH
QUALITY SYSTEM
CERTIFIED BY DNV GL
= ISO 9001 =**

ITALGROUP SRL
IAM SERIES - IAM H3
GENERAL CATALOGUE

INDEX - IAM H3

<u>IAM H3 - INSTALLATION DRAWING</u>	Pag	72 - 73
<u>IAM H3/C - INSTALLATION DRAWING</u>	"	74 - 75
<u>IAM H3/B30 - INSTALLATION DRAWING</u>	"	76 - 77
<u>IAM 800 H3 - INSTALLATION DRAWING</u>	"	78 - 79
<u>IAM 800/N H3 - INSTALLATION DRAWING</u>	"	80 - 81
<u>IAM H3/GM3 - INSTALLATION DRAWING</u>	"	82 - 83
<u>IAM H3/S - INSTALLATION DRAWING</u>	"	84 - 85
<u>IAM H3 - PERFORMANCE DRAWINGS</u>	"	86 - 90
<u>IAM H3 - ORDERING CODE</u>	"	91

INSTALLATION DRAWING



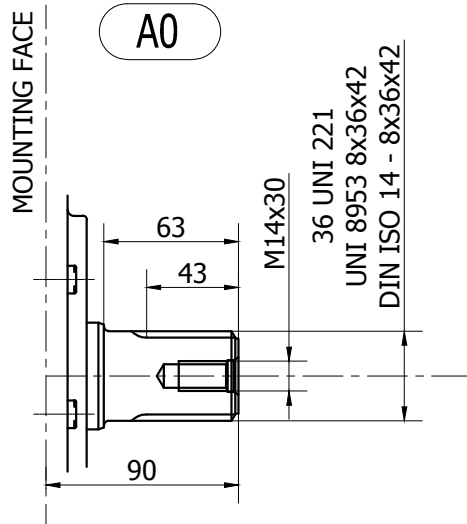
TECHNICAL DATA

		350 (*****)	400	450	500	600	650	700
DISPLACEMENT	[cc]	349	397	452	491	594	660	707
SPECIFIC TORQUE	[Nm/bar]	5.6	6.3	7.2	7.8	9.4	10.5	11.2
MAX. CONT. PRESSURE	[bar]	250	250	250	250	250	250	250
HYDROSTATIC TEST PRES- SURE	[bar]	420	420	420	420	420	420	420
MAX. CONT. SPEED	[rpm]	630	600	600	600	550	500	450
PEAK SPEED (***)	[rpm]	700	680	680	680	630	580	500
MAX. CONT. POWER (****)	[kW]	45	45	45	45	45	45	45
MAX. POWER	[kW]	68	68	68	68	68	68	68
MAX. CASE PRESSURE	[bar]	6	6	6	6	6	6	6
DRY WEIGHT	[kg]	68	68	68	68	68	68	68
TEMPERATURE RANGE (**)	[°C]	-30÷70	-30÷70	-30÷70	-30÷70	-30÷70	-30÷70	-30÷70

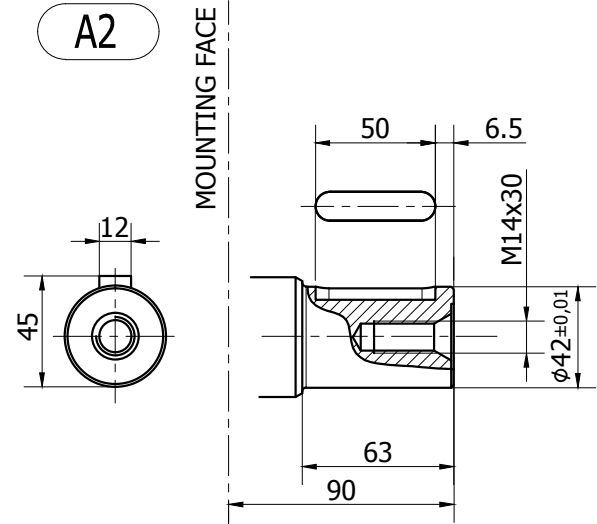
- (*) The standard distributor (D40) is shown. Please refer to distributors section (pag. 176-177) for different distributor interfaces.
- (**) Please refer to the hydraulic fluid recommendations (pag. 10-11).
- (***) Do not exceed maximum power (see pag. 13).
- (****) For motor operation with a continuous duty cycle at maximum continuous power the flushing is usually required. For more information please contact our technical department.
- (*****) Only A0 shaft is available for 350 cc displacement.

The data specified into the catalogue are for product description purpose only and must not be interpreted as warranted characteristics in legal sense. Italgrou S.r.l. reserves the right to implement modifications without notice. All partial or total reproduction and copy without written authorization of Italgrou S.r.l. is strictly forbidden.

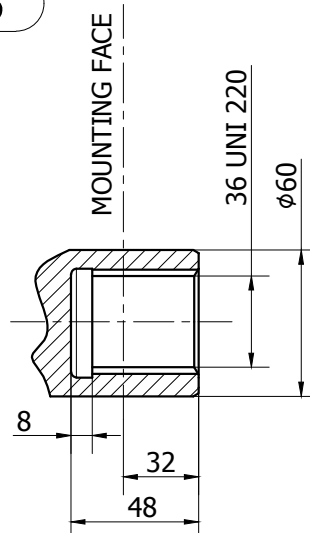
SHAFT CONFIGURATIONS



Available spline billet: **SB3**



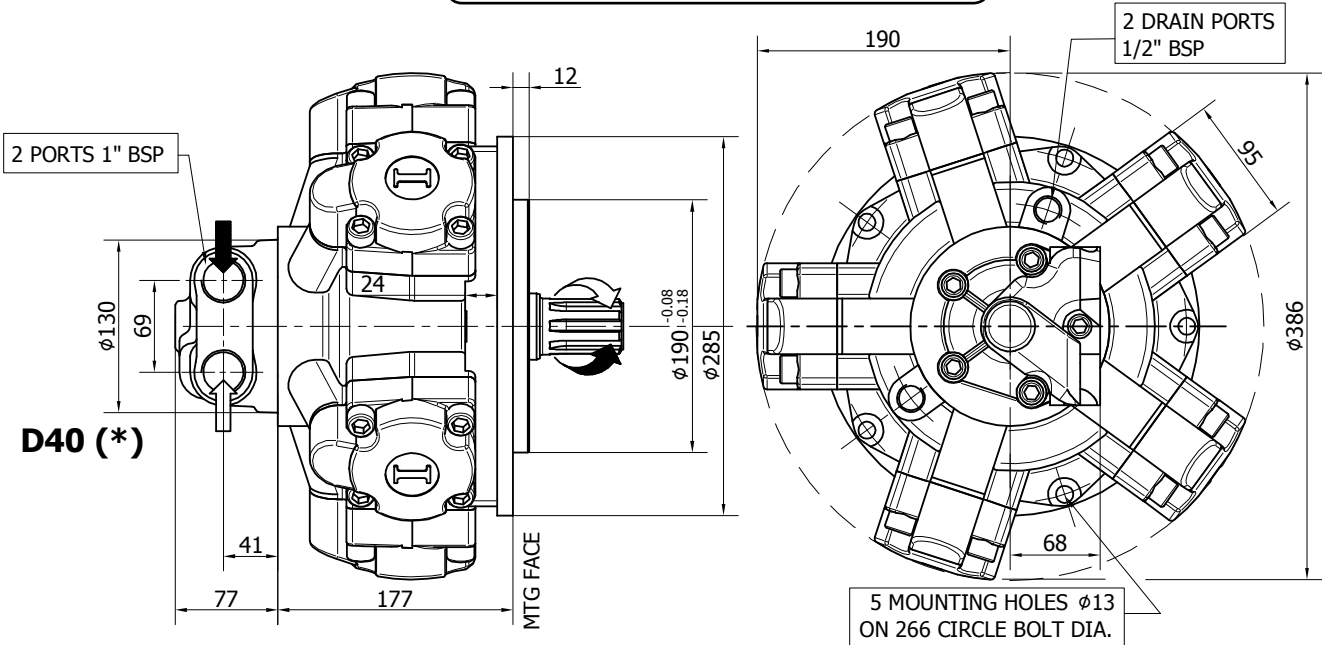
A3



The data specified into the catalogue are for product description purpose only and must not be interpreted as warranted characteristics in legal sense. Italgrou S.r.l. reserves the right to implement modifications without notice. All partial or total reproduction and copy without written authorization of Italgrou S.r.l. is strictly forbidden.

INSTALLATION DRAWING

Available distributor flange: **FL2**
refer to page 184 (distributor fitting D47)



TECHNICAL DATA

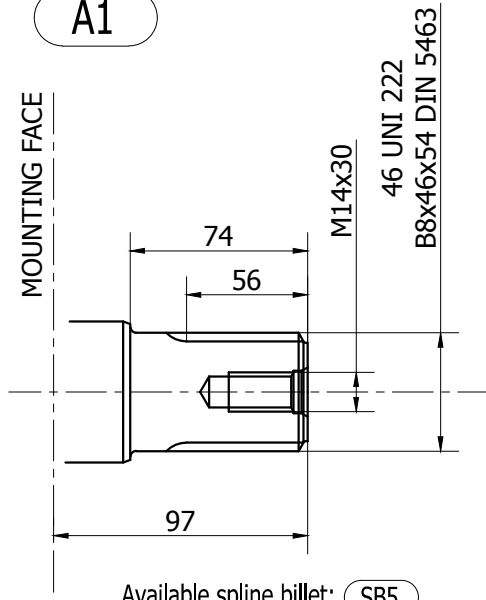
		400	450	500	600	650	700
DISPLACEMENT	[cc]	397	452	491	594	660	707
SPECIFIC TORQUE	[Nm/bar]	6.3	7.2	7.8	9.4	10.5	11.2
MAX. CONT. PRESSURE	[bar]	250	250	250	250	250	250
HYDROSTATIC TEST PRES- SURE	[bar]	420	420	420	420	420	420
MAX. CONT. SPEED	[rpm]	600	600	600	550	500	450
PEAK SPEED (***)	[rpm]	680	680	680	630	580	500
MAX. CONT. POWER (****)	[kW]	45	45	45	45	45	45
MAX. POWER	[kW]	68	68	68	68	68	68
MAX. CASE PRESSURE	[bar]	6	6	6	6	6	6
DRY WEIGHT	[kg]	68	68	68	68	68	68
TEMPERATURE RANGE (**)	[°C]	-30÷70	-30÷70	-30÷70	-30÷70	-30÷70	-30÷70

- (*) The standard distributor (D40) is shown. Please refer to distributors section (pag. 176-177) for differents distributor interfaces.
- (**) Please refer to the hydraulic fluid recommendations (pag. 10-11).
- (***) Do not exceed maximum power (see pag. 13).
- (****) For motor operation with a continuous duty cycle at maximum continuous power the flushing is usually required. For more information please contact our technical department.

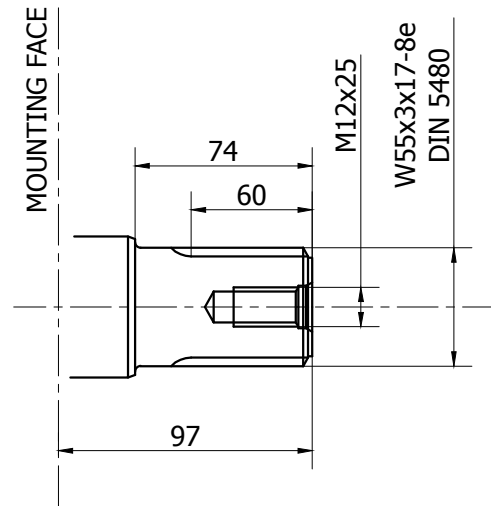
The data specified into the catalogue are for product description purpose only and must not be interpreted as warranted characteristics in legal sense. Italgrou S.r.l. reserves the right to implement modifications without notice. All partial or total reproduction and copy without written authorization of Italgrou S.r.l. is strictly forbidden.

SHAFT CONFIGURATIONS

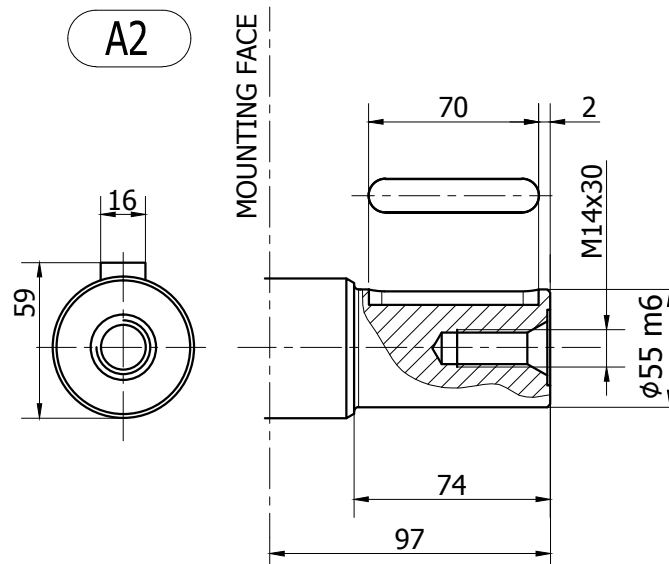
A1



A11

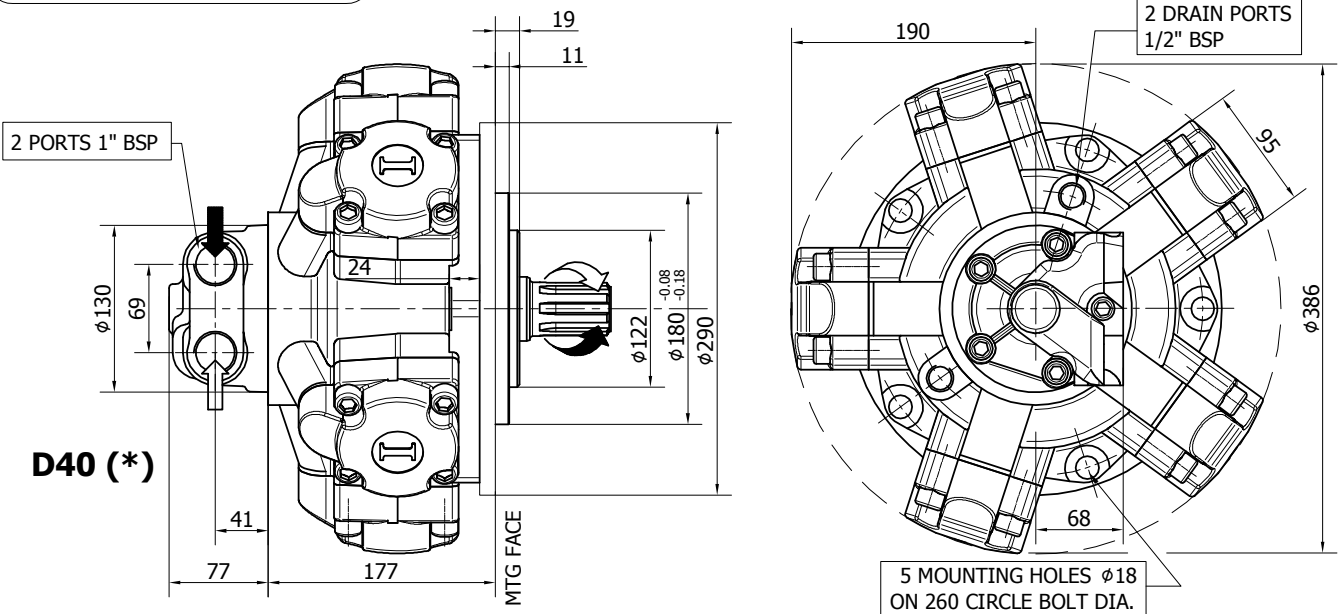


A2



The data specified into the catalogue are for product description purpose only and must not be interpreted as warranted characteristics in legal sense. Italgroup S.r.l. reserves the right to implement modifications without notice. All partial or total reproduction and copy without written authorization of Italgroup S.r.l. is strictly forbidden.

INSTALLATION DRAWING



TECHNICAL DATA

		400	450	500	600	650	700
DISPLACEMENT	[cc]	397	452	491	594	660	707
SPECIFIC TORQUE	[Nm/bar]	6.3	7.2	7.8	9.4	10.5	11.2
MAX. CONT. PRESSURE	[bar]	250	250	250	250	250	250
HYDROSTATIC TEST PRESSURE	[bar]	420	420	420	420	420	420
MAX. CONT. SPEED	[rpm]	600	600	600	550	500	450
PEAK SPEED (***)	[rpm]	680	680	680	630	580	500
MAX. CONT. POWER (****)	[kW]	45	45	45	45	45	45
MAX. POWER	[kW]	68	68	68	68	68	68
MAX. CASE PRESSURE	[bar]	6	6	6	6	6	6
DRY WEIGHT	[kg]	68	68	68	68	68	68
TEMPERATURE RANGE (**)	[°C]	-30÷70	-30÷70	-30÷70	-30÷70	-30÷70	-30÷70

- (*) The standard distributor (D40) is shown. Please refer to distributors section (pag. 176-177) for different distributor interfaces.

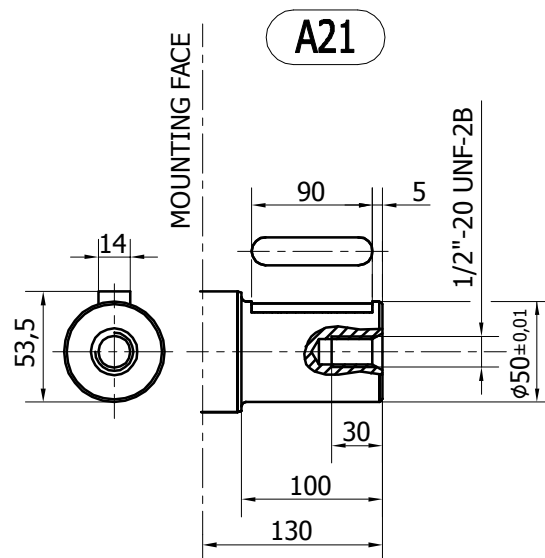
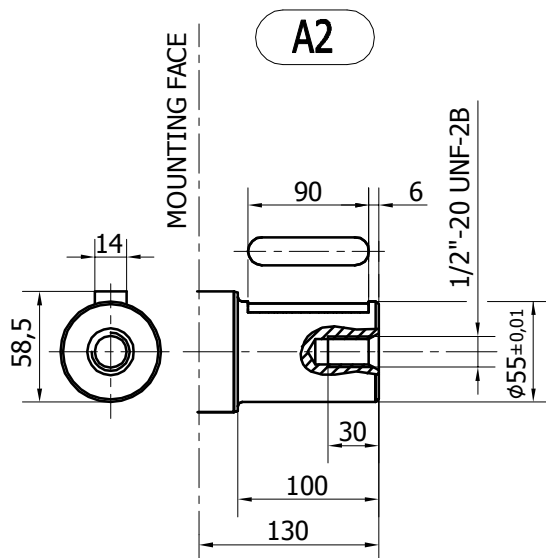
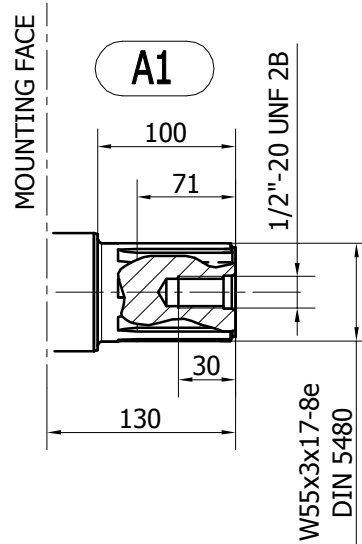
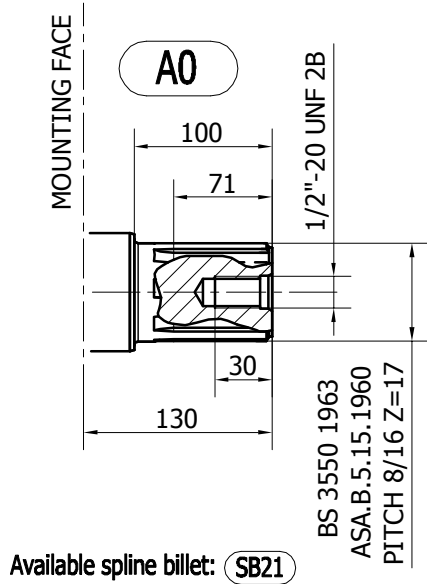
- (**) Please refer to the hydraulic fluid recommendations (pag. 10-11).

- (***) Do not exceed maximum power (see pag. 13).

- (****) For motor operation with a continuous duty cycle at maximum continuous power the flushing is usually required. For more information please contact our technical department.

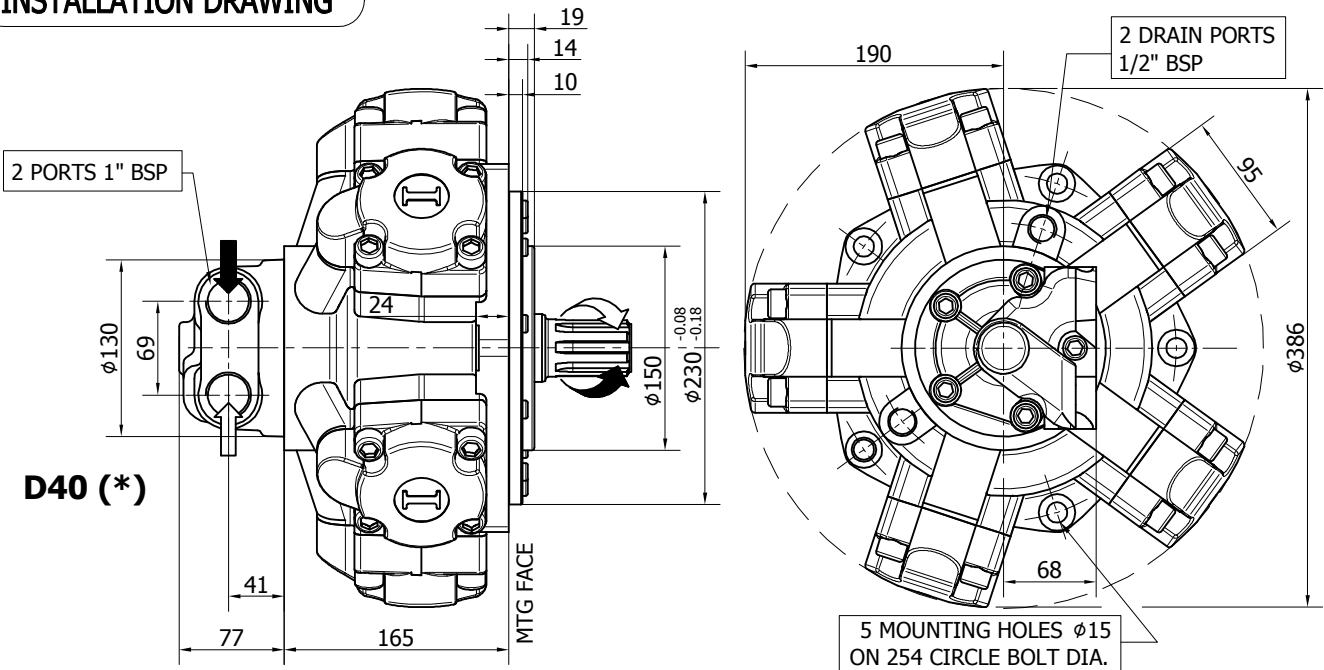
The data specified into the catalogue are for product description purpose only and must not be interpreted as warranted characteristics in legal sense. Italgrou S.r.l. reserves the right to implement modifications without notice. All partial or total reproduction and copy without written authorization of Italgrou S.r.l. is strictly forbidden.

SHAFT CONFIGURATIONS



The data specified into the catalogue are for product description purpose only and must not be interpreted as warranted characteristics in legal sense. Italgrou S.r.l. reserves the right to implement modifications without notice. All partial or total reproduction and copy without written authorization of Italgrou S.r.l. is strictly forbidden.

INSTALLATION DRAWING



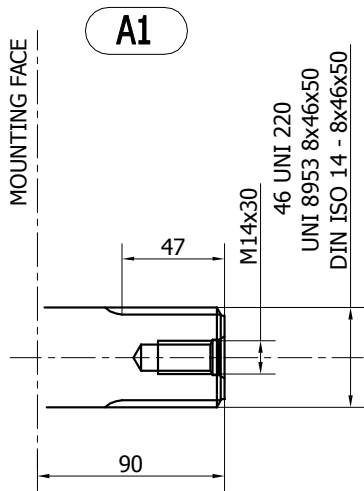
TECHNICAL DATA

		800 (*****)
DISPLACEMENT	[cc]	791
SPECIFIC TORQUE	[Nm/bar]	12.6
MAX. CONT. PRESSURE	[bar]	250
HYDROSTATIC TEST PRESSURE	[bar]	420
MAX. CONT. SPEED	[rpm]	400
PEAK SPEED (***)	[rpm]	450
MAX. CONT. POWER (****)	[kW]	45
MAX. POWER	[kW]	68
MAX. CASE PRESSURE	[bar]	6
DRY WEIGHT	[kg]	68
TEMPERATURE RANGE (**)	[°C]	-30÷70

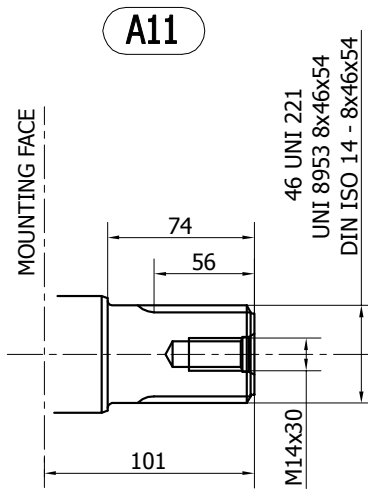
- (*) The standard distributor (D40) is shown. Please refer to distributors section (pag. 176-177) for different distributor interfaces.
- (**) Please refer to the hydraulic fluid recommendations (pag. 10-11).
- (***) Do not exceed maximum power (see pag. 13).
- (****) For motor operation with a continuous duty cycle at maximum continuous power the flushing is usually required. For more information please contact our technical department.
- (*****) Only for spare parts market. Please contact our technical department for more details.

The data specified into the catalogue are for product description purpose only and must not be interpreted as warranted characteristics in legal sense. Italgrou S.r.l. reserves the right to implement modifications without notice. All partial or total reproduction and copy without written authorization of Italgrou S.r.l. is strictly forbidden.

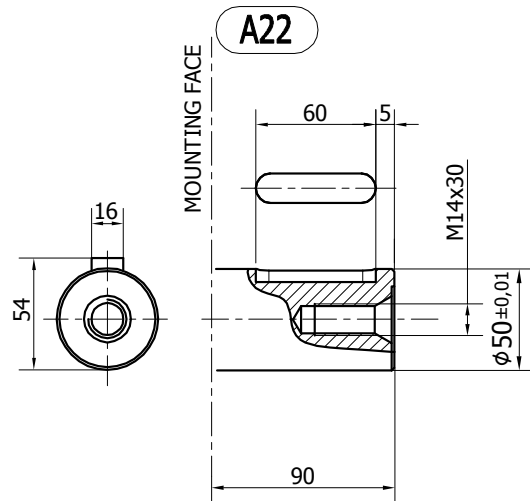
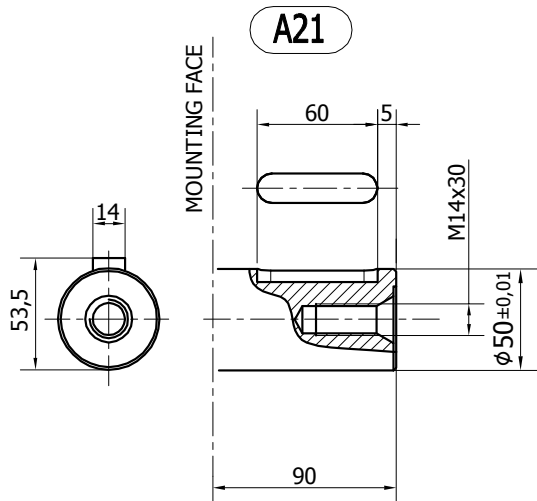
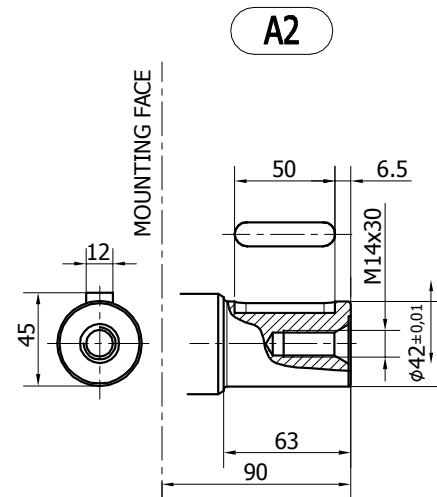
SHAFT CONFIGURATIONS



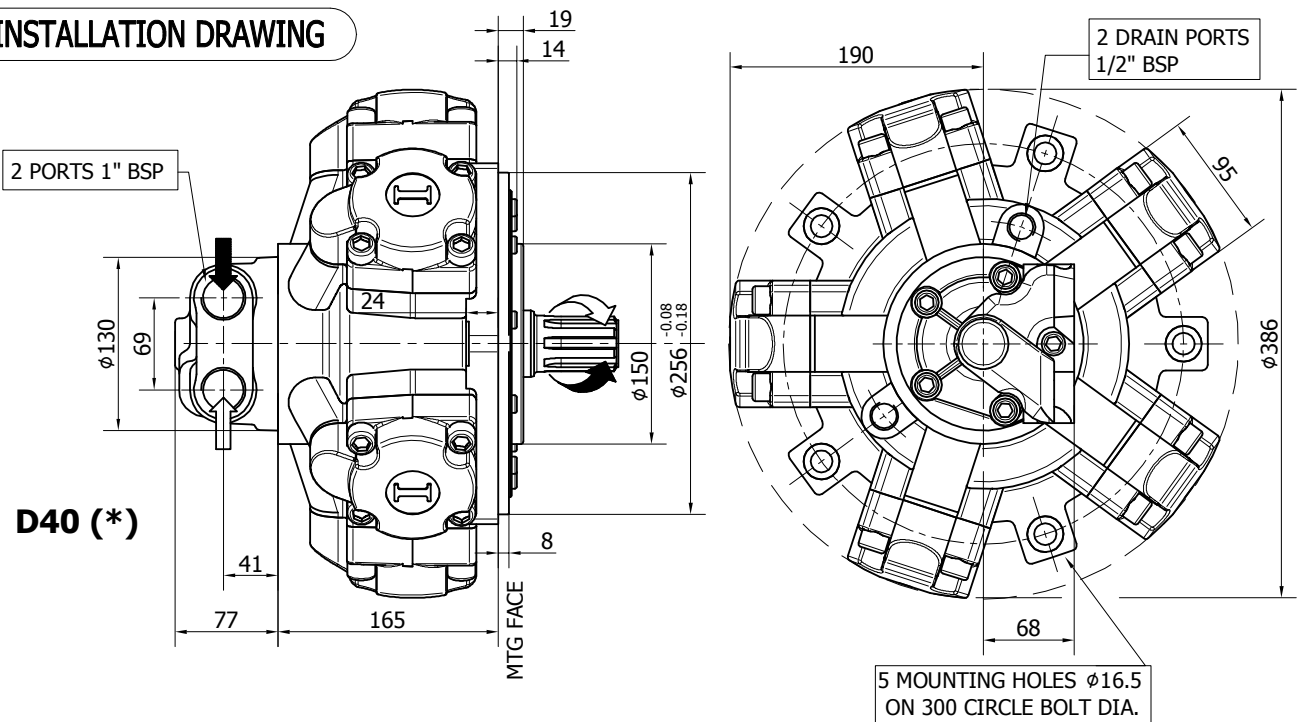
Available spline billet: **SB4**



Available spline billet: **SB5**



INSTALLATION DRAWING



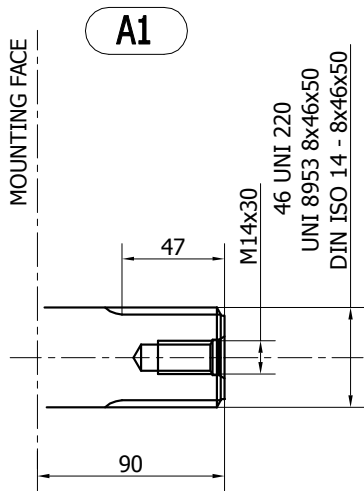
TECHNICAL DATA

		800 (*****)
DISPLACEMENT	[cc]	791
SPECIFIC TORQUE	[Nm/bar]	12.6
MAX. CONT. PRESSURE	[bar]	250
HYDROSTATIC TEST PRESSURE	[bar]	420
MAX. CONT. SPEED	[rpm]	400
PEAK SPEED (***)	[rpm]	450
MAX. CONT. POWER (****)	[kW]	45
MAX. POWER	[kW]	68
MAX. CASE PRESSURE	[bar]	6
DRY WEIGHT	[kg]	68
TEMPERATURE RANGE (**)	[°C]	-30÷70

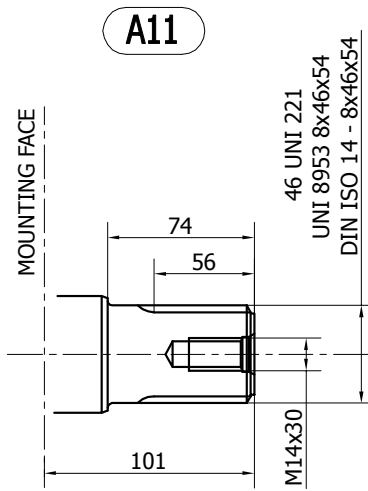
- (*) The standard distributor (D40) is shown. Please refer to distributors section (pag. 176-177) for different distributor interfaces.
- (**) Please refer to the hydraulic fluid recommendations (pag. 10-11).
- (***) Do not exceed maximum power (see pag. 13).
- (****) For motor operation with a continuous duty cycle at maximum continuous power the flushing is usually required. For more information please contact our technical department.
- (*****) Only for spare parts market. Please contact our technical department for more details.

The data specified into the catalogue are for product description purpose only and must not be interpreted as warranted characteristics in legal sense. Italgrou S.r.l. reserves the right to implement modifications without notice. All partial or total reproduction and copy without written authorization of Italgrou S.r.l. is strictly forbidden.

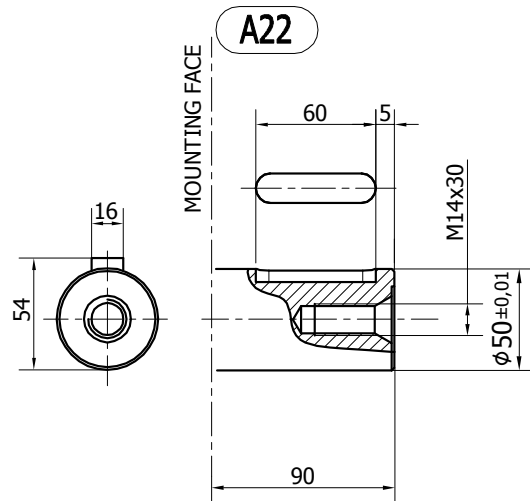
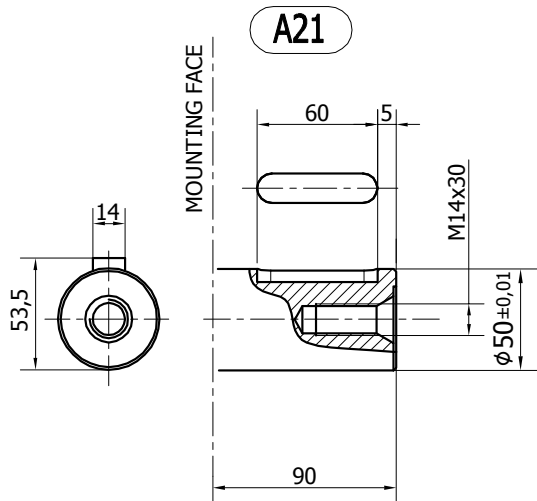
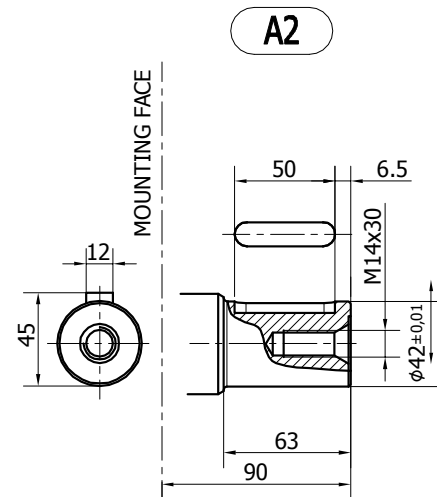
SHAFT CONFIGURATIONS



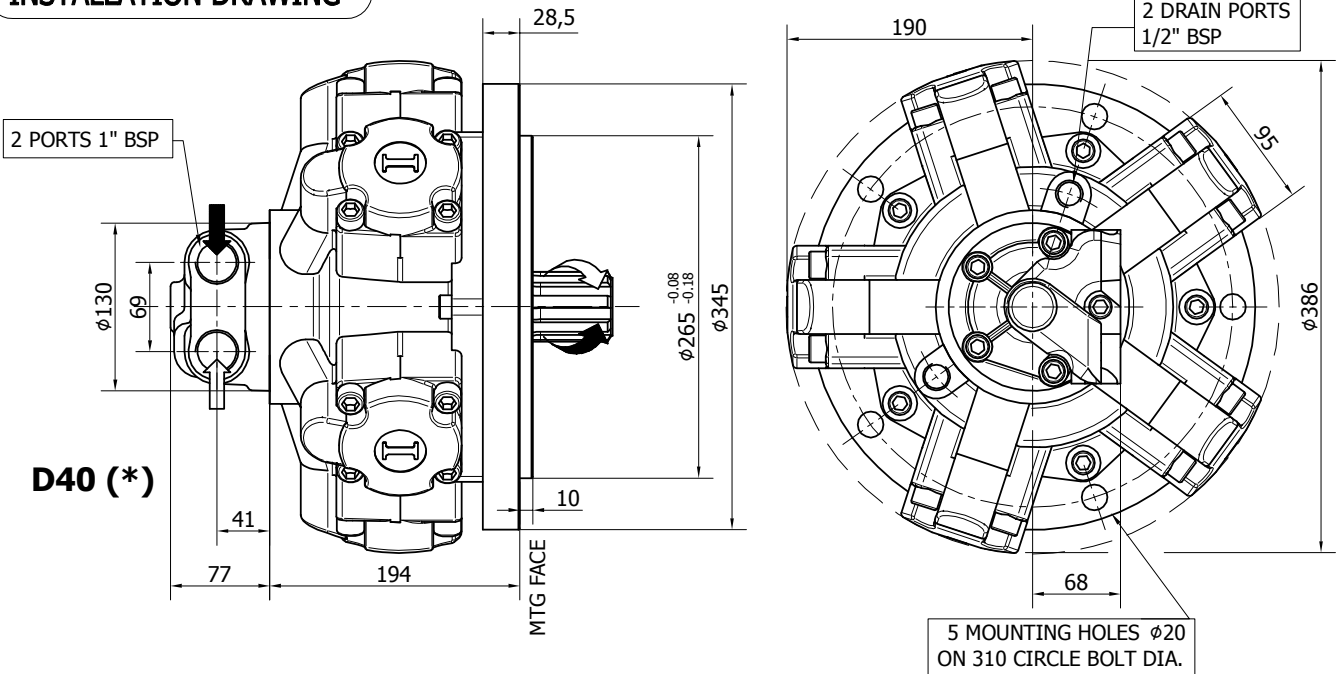
Available spline billet: **SB4**



Available spline billet: **SB5**



INSTALLATION DRAWING



TECHNICAL DATA

		400	450	500	600	650	700
DISPLACEMENT	[cc]	397	452	491	594	660	707
SPECIFIC TORQUE	[Nm/bar]	6.3	7.2	7.8	9.4	10.5	11.2
MAX. CONT. PRESSURE	[bar]	250	250	250	250	250	250
HYDROSTATIC TEST PRESSURE	[bar]	420	420	420	420	420	420
MAX. CONT. SPEED	[rpm]	600	600	600	550	500	450
PEAK SPEED (***)	[rpm]	680	680	680	630	580	500
MAX. CONT. POWER (****)	[kW]	45	45	45	45	45	45
MAX. POWER	[kW]	68	68	68	68	68	68
MAX. CASE PRESSURE	[bar]	6	6	6	6	6	6
DRY WEIGHT	[kg]	68	68	68	68	68	68
TEMPERATURE RANGE (**)	[°C]	-30÷70	-30÷70	-30÷70	-30÷70	-30÷70	-30÷70

- (*) The standard distributor (D40) is shown. Please refer to distributors section (pag. 176-177) for different distributor interfaces.

- (**) Please refer to the hydraulic fluid recommendations (pag. 10-11).

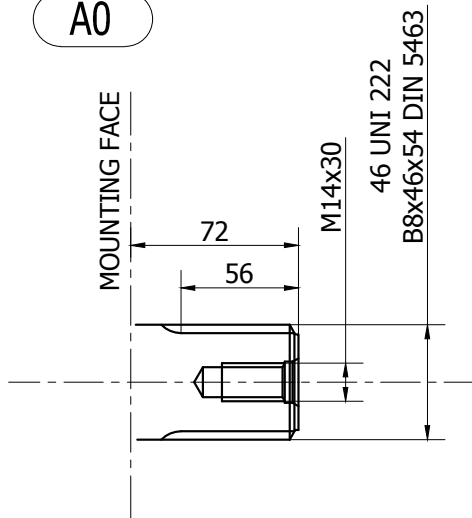
- (***) Do not exceed maximum power (see pag. 13).

- (****) For motor operation with a continuous duty cycle at maximum continuous power the flushing is usually required. For more information please contact our technical department.

The data specified into the catalogue are for product description purpose only and must not be interpreted as warranted characteristics in legal sense. Italgroup S.r.l. reserves the right to implement modifications without notice. All partial or total reproduction and copy without written authorization of Italgroup S.r.l. is strictly forbidden.

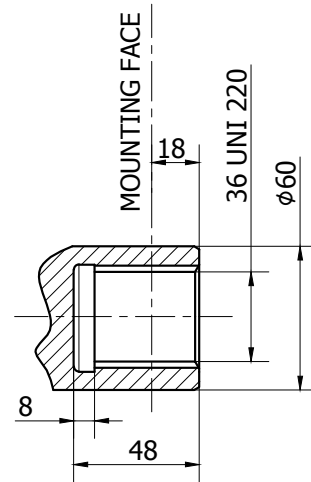
SHAFT CONFIGURATIONS

A0

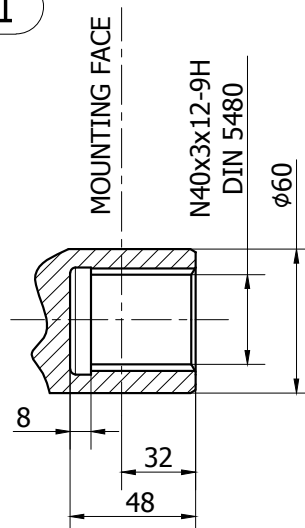


Available spline billet: SB5

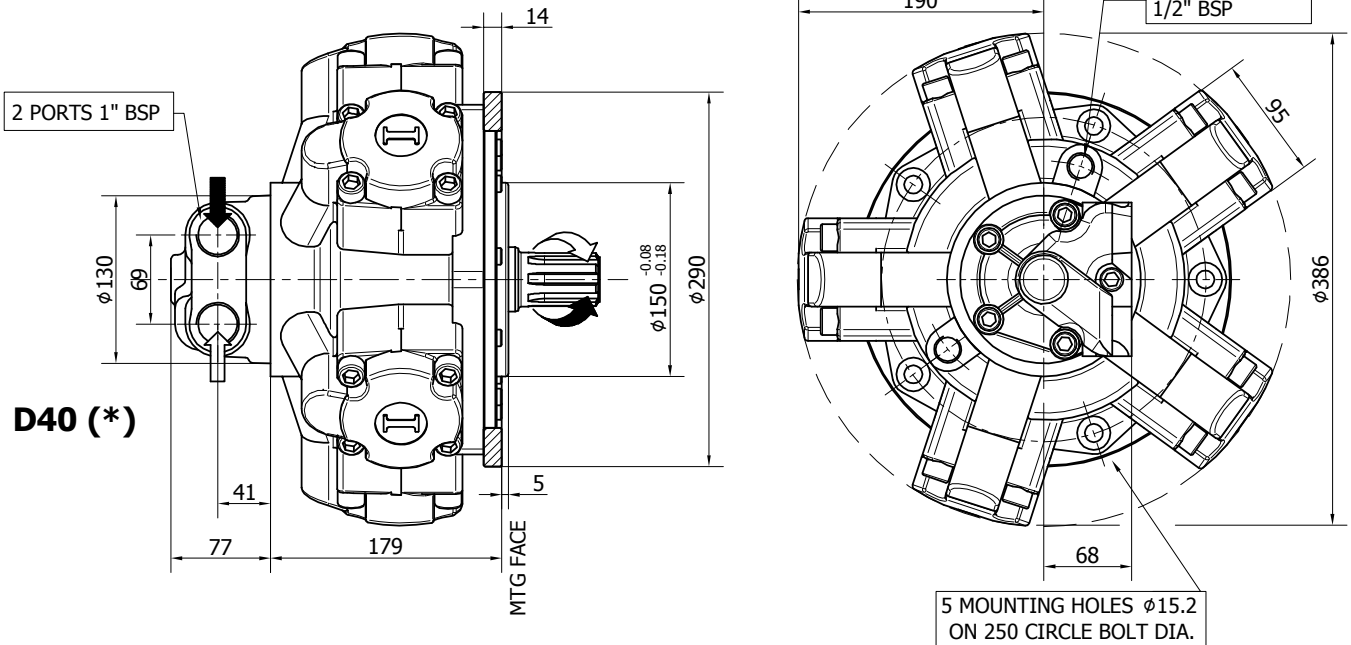
A3



A31



INSTALLATION DRAWING



TECHNICAL DATA

		400	450	500	600	650	700
DISPLACEMENT	[cc]	397	452	491	594	660	707
SPECIFIC TORQUE	[Nm/bar]	6.3	7.2	7.8	9.4	10.5	11.2
MAX. CONT. PRESSURE	[bar]	250	250	250	250	250	250
HYDROSTATIC TEST PRES-SURE	[bar]	420	420	420	420	420	420
MAX. CONT. SPEED	[rpm]	600	600	600	550	500	450
PEAK SPEED (***)	[rpm]	680	680	680	630	580	500
MAX. CONT. POWER (****)	[kW]	45	45	45	45	45	45
MAX. POWER	[kW]	68	68	68	68	68	68
MAX. CASE PRESSURE	[bar]	6	6	6	6	6	6
DRY WEIGHT	[kg]	68	68	68	68	68	68
TEMPERATURE RANGE (**)	[°C]	-30÷70	-30÷70	-30÷70	-30÷70	-30÷70	-30÷70

- (*) The standard distributor (D40) is shown. Please refer to distributors section (pag. 176-177) for different distributor interfaces.

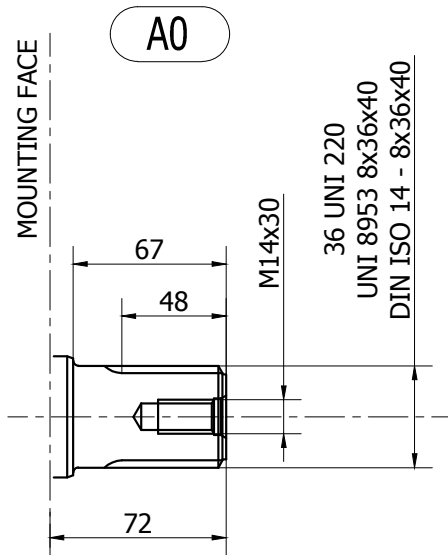
- (**) Please refer to the hydraulic fluid recommendations (pag. 10-11).

- (***) Do not exceed maximum power (see pag. 13).

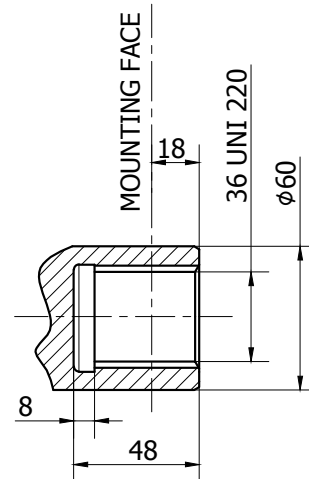
- (****) For motor operation with a continuous duty cycle at maximum continuous power the flushing is usually required. For more information please contact our technical department.

The data specified into the catalogue are for product description purpose only and must not be interpreted as warranted characteristics in legal sense. Italgrou S.r.l. reserves the right to implement modifications without notice. All partial or total reproduction and copy without written authorization of Italgrou S.r.l. is strictly forbidden.

SHAFT CONFIGURATIONS

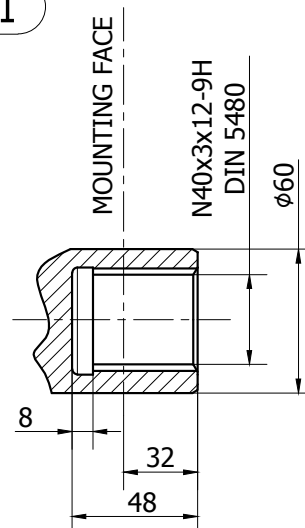


A3



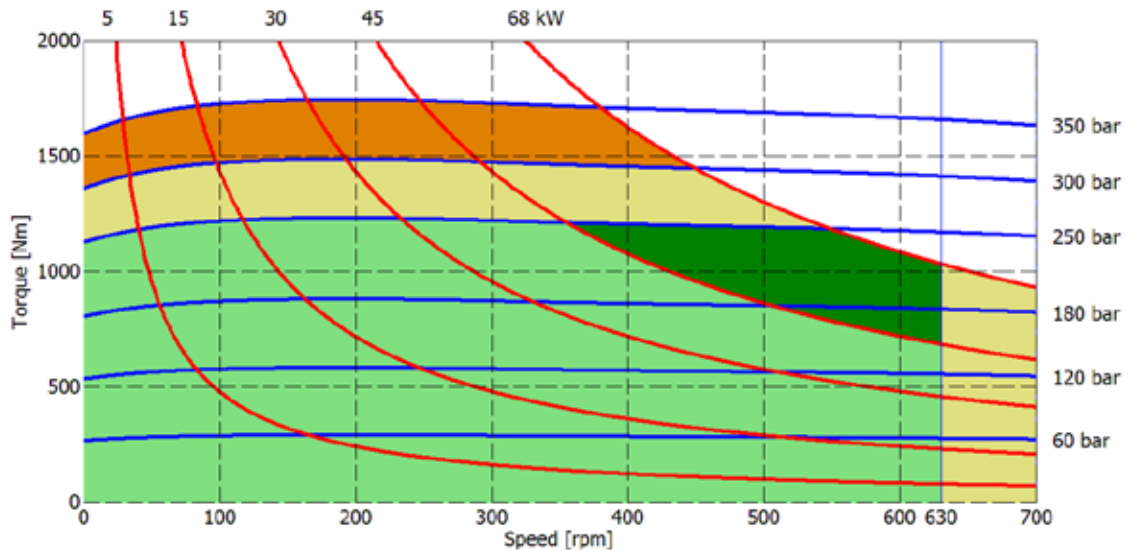
Available spline billet: **SB3**

A31

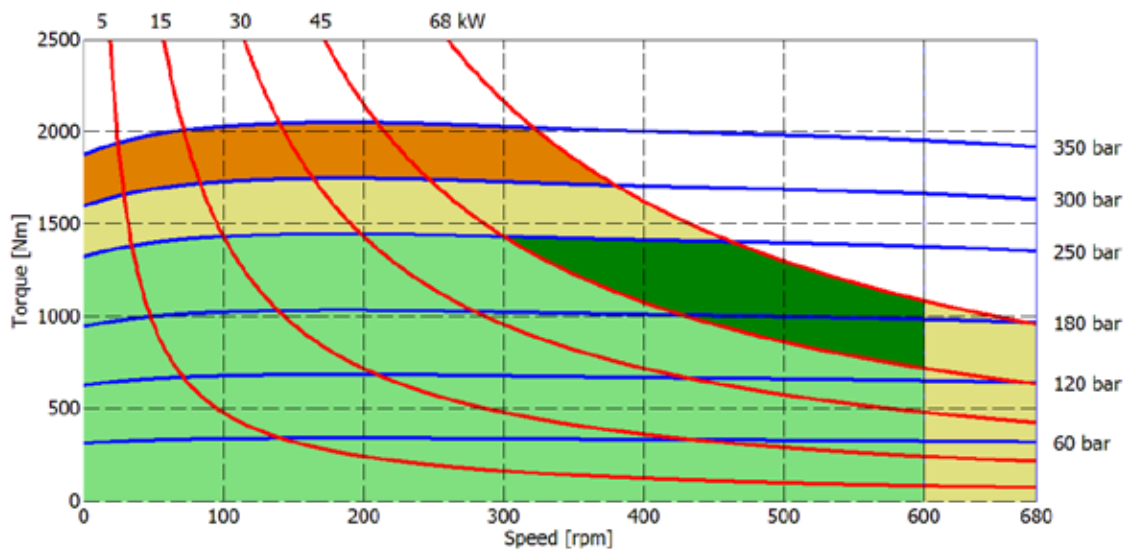


IAM H3 - PERFORMANCE DIAGRAMS

350 cc



400 cc



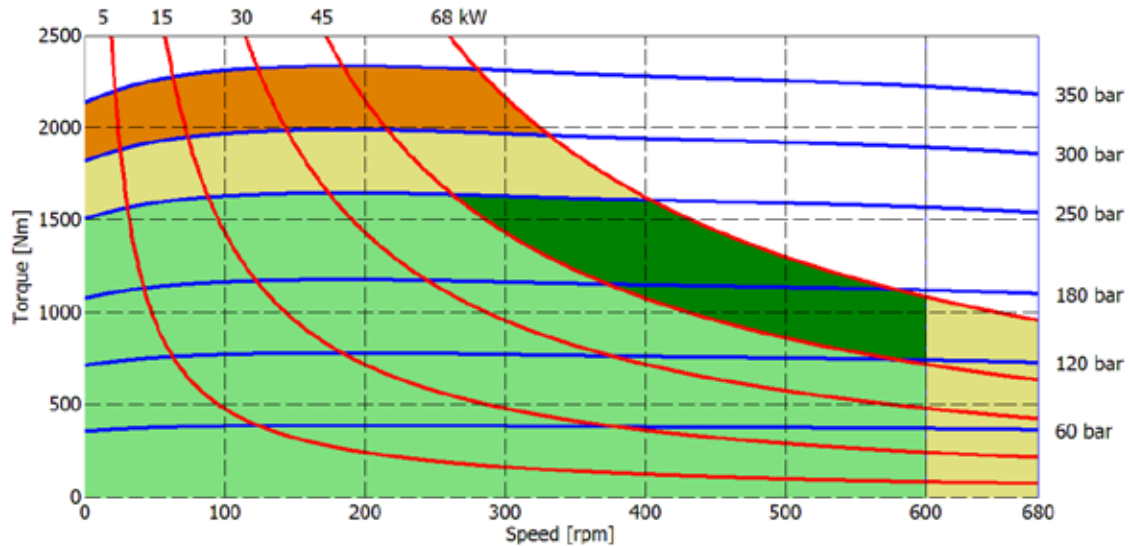
- Continuous operation
- Continuous operation with flushing or intermittent operation (see below for intermittent operation)
- Intermittent operation: permitted for a 15% of duty cycle, for 3 minutes maximum period
- Peak operation: permitted for very short periods (3-5 seconds every 10-15 minutes)

The above diagrams are referring to the hydraulic motor working with a fluid in ideal conditions (viscosity at 40 cSt). In case the working temperature increases and viscosity reach values under the recommended values (see hydraulic fluid recommendations) flushing must be performed or ISO oil grade must be changed. The working temperature must not overcome 70 °C.

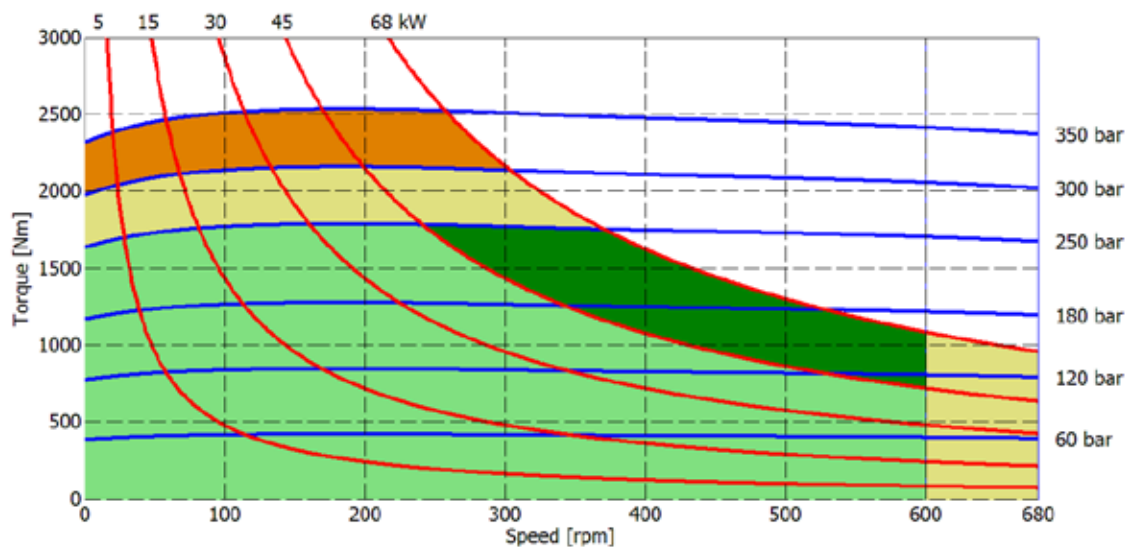
The data specified into the catalogue are for product description purpose only and must not be interpreted as warranted characteristics in legal sense. Italgrou S.r.l. reserves the right to implement modifications without notice. All partial or total reproduction and copy without written authorization of Italgrou S.r.l. is strictly forbidden.

IAM H3 - PERFORMANCE DIAGRAMS

450 cc



500 cc



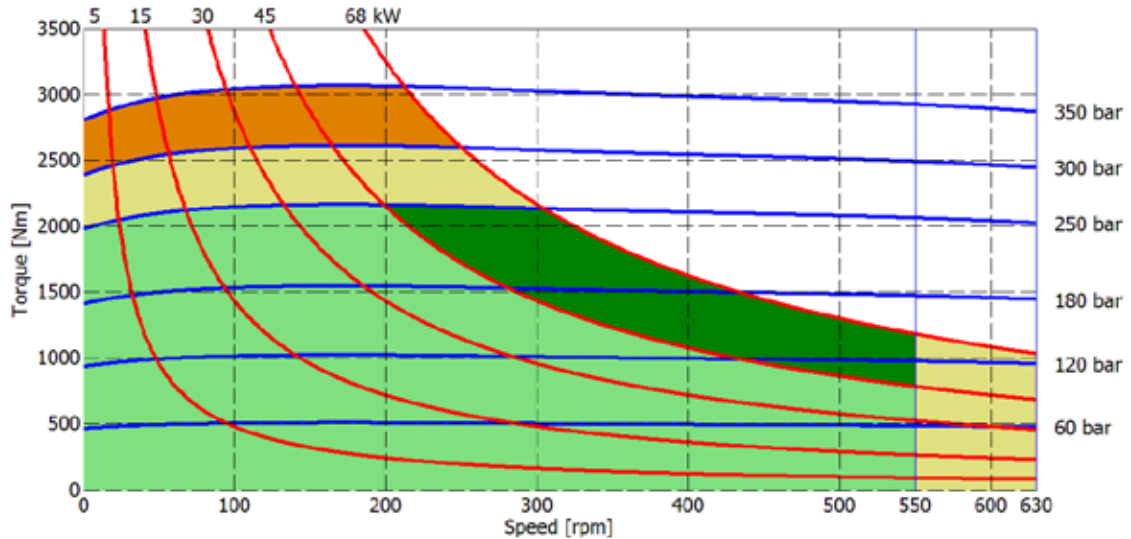
- Continuous operation
- Continuous operation with flushing or intermittent operation (see below for intermittent operation)
- Intermittent operation: permitted for a 15% of duty cycle, for 3 minutes maximum period
- Peak operation: permitted for very short periods (3-5 seconds every 10-15 minutes)

The above diagrams are referring to the hydraulic motor working with a fluid in ideal conditions (viscosity at 40 cSt). In case the working temperature increases and viscosity reach values under the recommended values (see hydraulic fluid recommendations) flushing must be performed or ISO oil grade must be changed. The working temperature must not overcome 70 °C.

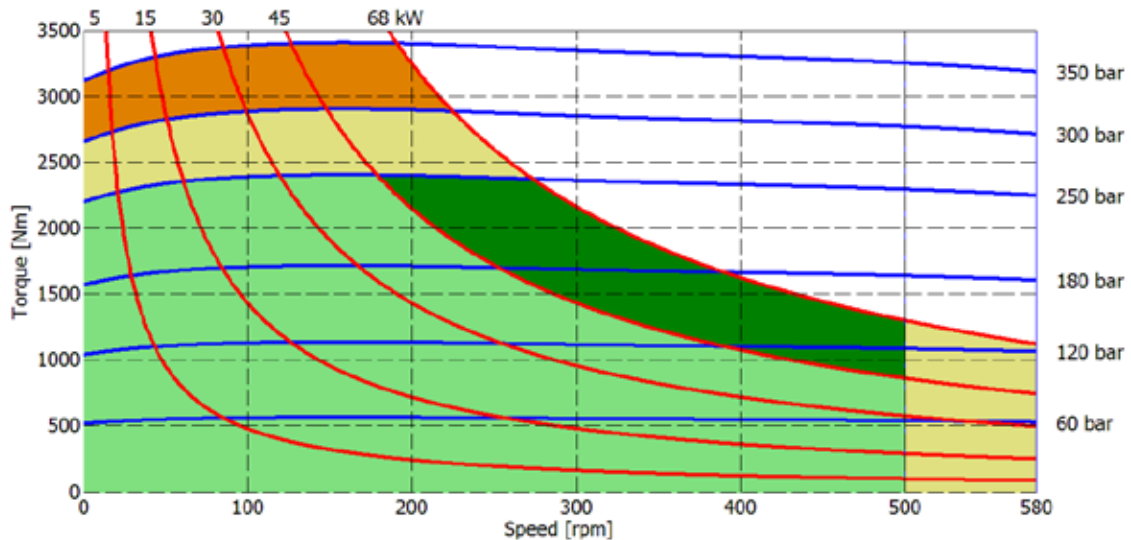
The data specified into the catalogue are for product description purpose only and must not be interpreted as warranted characteristics in legal sense. Italgroup S.r.l. reserves the right to implement modifications without notice. All partial or total reproduction and copy without written authorization of Italgroup S.r.l. is strictly forbidden.

IAM H3 - PERFORMANCE DIAGRAMS

600 cc



650 cc



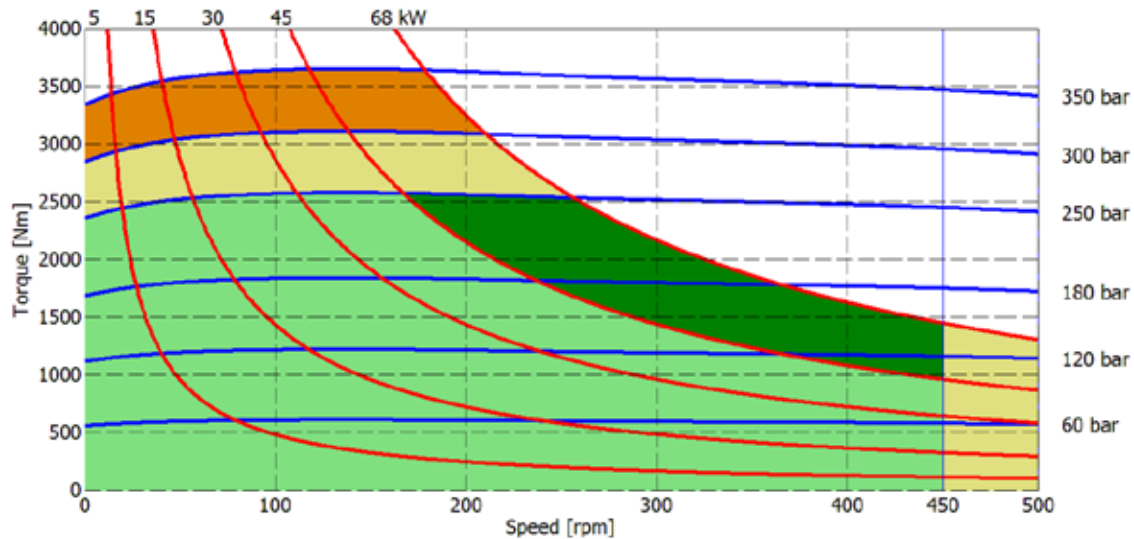
- Continuous operation
- Continuous operation with flushing or intermittent operation (see below for intermittent operation)
- Intermittent operation: permitted for a 15% of duty cycle, for 3 minutes maximum period
- Peak operation: permitted for very short periods (3-5 seconds every 10-15 minutes)

The above diagrams are referring to the hydraulic motor working with a fluid in ideal conditions (viscosity at 40 cSt). In case the working temperature increases and viscosity reach values under the recommended values (see hydraulic fluid recommendations) flushing must be performed or ISO oil grade must be changed. The working temperature must not overcome 70 °C.

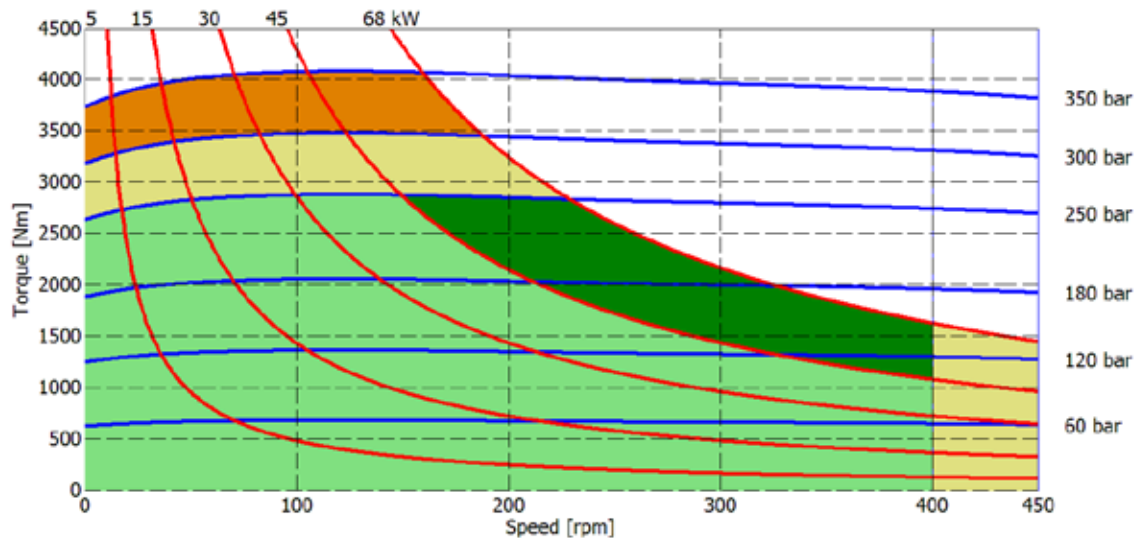
The data specified into the catalogue are for product description purpose only and must not be interpreted as warranted characteristics in legal sense. Italgrou S.r.l. reserves the right to implement modifications without notice. All partial or total reproduction and copy without written authorization of Italgrou S.r.l. is strictly forbidden.

IAM H3 - PERFORMANCE DIAGRAMS

700 cc



800 cc

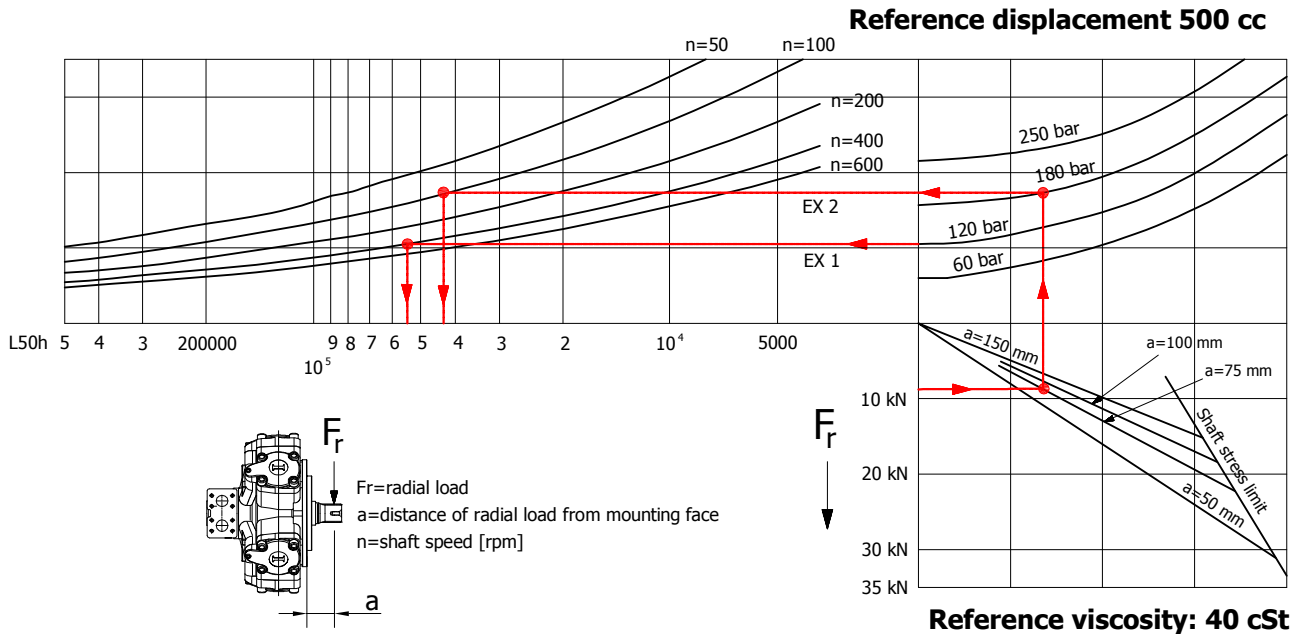


- Continuous operation
- Continuous operation with flushing or intermittent operation (see below for intermittent operation)
- Intermittent operation: permitted for a 15% of duty cycle, for 3 minutes maximum period
- Peak operation: permitted for very short periods (3-5 seconds every 10-15 minutes)

The above diagrams are referring to the hydraulic motor working with a fluid in ideal conditions (viscosity at 40 cSt). In case the working temperature increases and viscosity reach values under the recommended values (see hydraulic fluid recommendations) flushing must be performed or ISO oil grade must be changed. The working temperature must not overcome 70 °C.

The data specified into the catalogue are for product description purpose only and must not be interpreted as warranted characteristics in legal sense. Italgroup S.r.l. reserves the right to implement modifications without notice. All partial or total reproduction and copy without written authorization of Italgroup S.r.l. is strictly forbidden.

BEARING LIFE



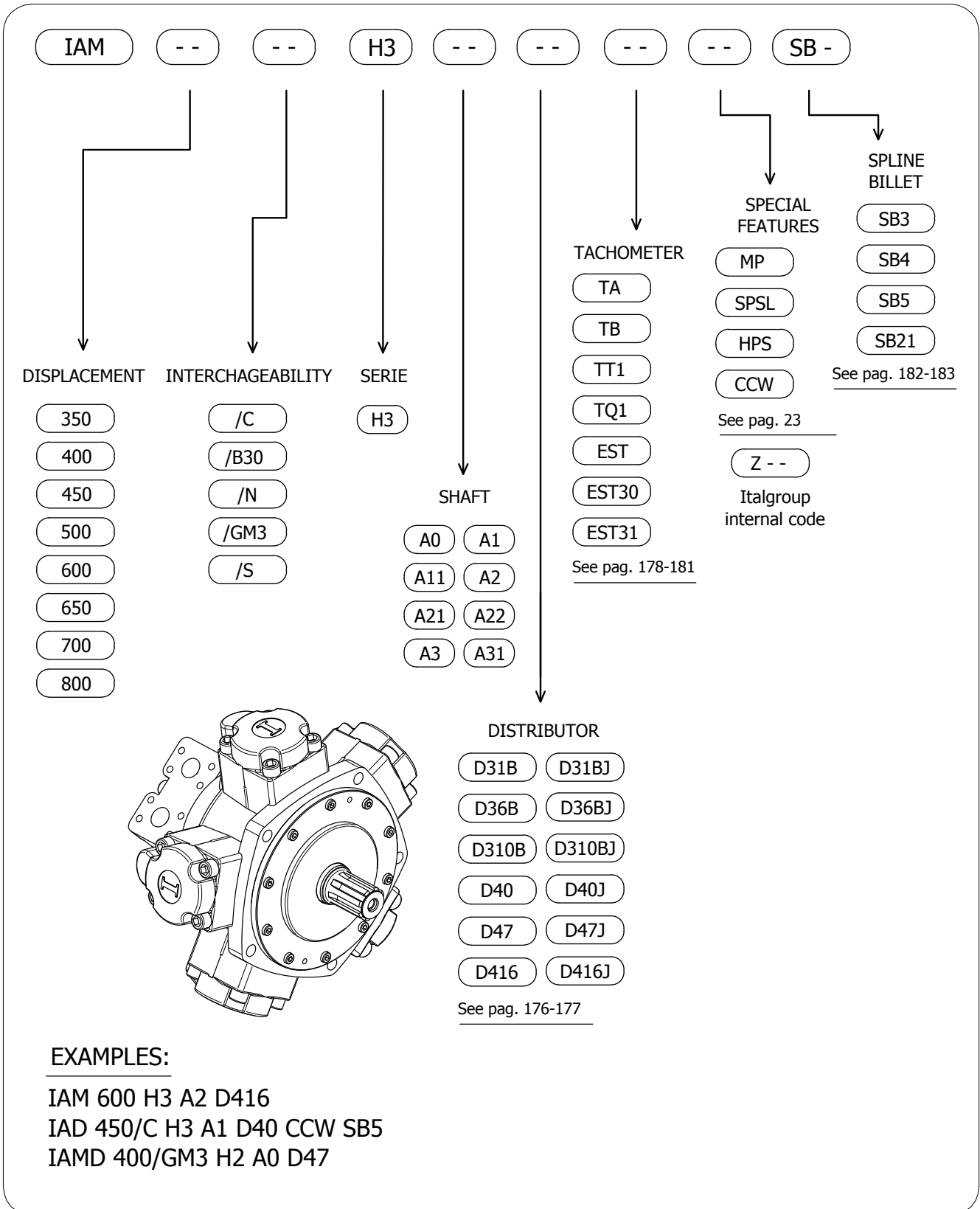
Example:

We suppose (EX1): $p=120$ [bar], $n=400$ [rpm]; we obtain an average lifetime of 53000 [h].

If we suppose (EX2): $F_r=9$ [kN], $a=75$ [mm], $n=100$ [rpm] and $p=180$ [bar] we obtain an average lifetime of 42000 [h].

The above data are referring to the IAM H3 series motors, displacement 500 cc.

IAM H3 - ORDERING CODE



The data specified into the catalogue are for product description purpose only and must not be interpreted as warranted characteristics in legal sense. Italgroup S.r.l. reserves the right to implement modifications without notice. All partial or total reproduction and copy without written authorization of Italgroup S.r.l. is strictly forbidden.

CONTACT US

Italgroup S.r.l.
Via Pacinotti 20/22
41010 - Gaggio di Piano (Modena) – Italy

Tel. +39 059 92 42 57
Fax +39 059 92 01 13
e-mail: italgroup@italgroup.eu
internet: <http://www.italgroup.eu>

REACH US



Europe

Austria
Belgium
Croatia
Czech Republic
Cyprus
Denmark
Faroe Islands
France
Finland
Germany
Greece
Iceland
Italy
Netherlands
Norway
Poland
Portugal
Russia
Slovenia
Spain
Sweden
Switzerland
Turkey
Ukraine
United Kingdom

Africa

Egypt
South Africa
Tunisia

America

Argentina
Brazil
Canada
Chile
Mexico
Peru
USA
Colombia

Asia

China
Hong Kong
India
Indonesia
Iran
Israel
Philippines
Russia
Belarus
Singapore
South Korea
Thailand
Taiwan
United Arab Emirates
Vietnam

Oceania

Australia
New Zealand

