

Italgroup[®]

HYDRAULIC MOTORS

ITALY



IAM

Single displacement hydraulic motors

The data specified into the catalogue are for product description purpose only and must not be interpreted as warranted characteristics in legal sense.
ItalgrouP S.r.l. reserves the right to implement modifications without notice.

All partial or total reproduction and copy without written authorization of ItalgrouP S.r.l. is strictly forbidden.

©2016 ITALGROUP S.R.L. - ALL RIGHTS RESERVED -

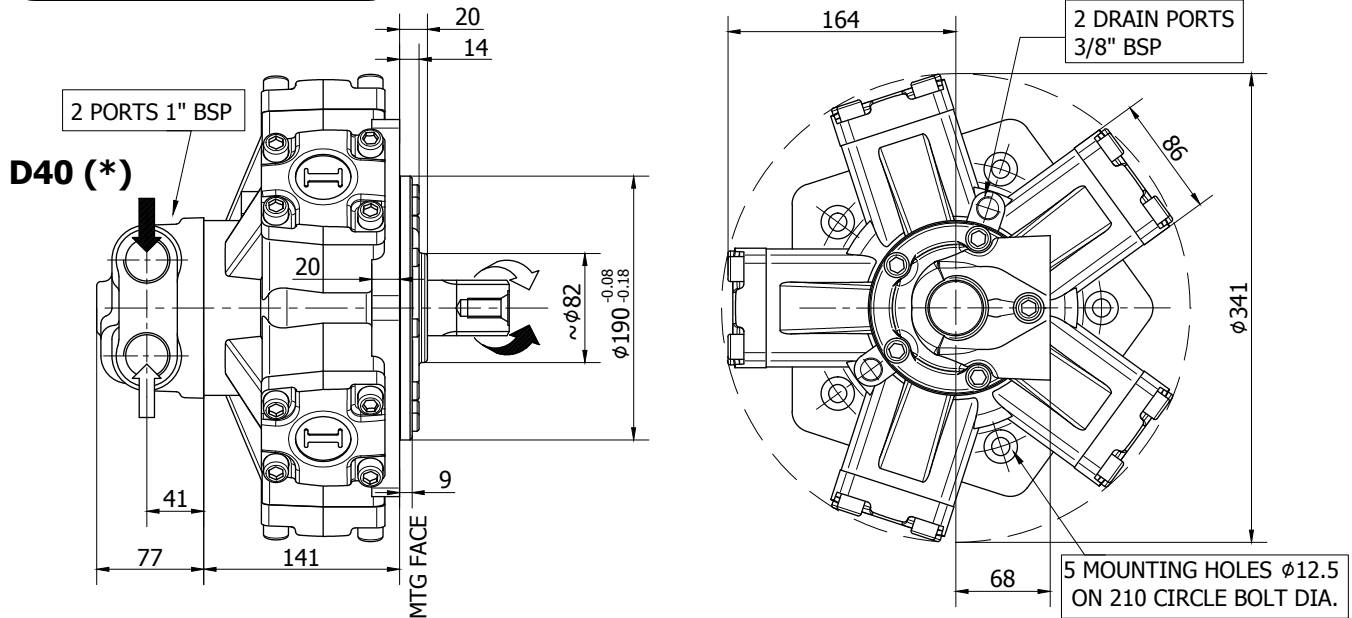
**COMPANY WITH
QUALITY SYSTEM
CERTIFIED BY DNV GL
= ISO 9001 =**

ITALGROUP SRL
IAM SERIES - IAM H2
GENERAL CATALOGUE

INDEX - IAM H2

IAM 200-250-300-350 H2 - INSTALLATION DRAWING	Pag	48 - 49
IAM 400-500-600 H2 - INSTALLATION DRAWING	"	50 - 51
IAM 160-190-250/C190 H2 - INSTALLATION DRAWING	"	52 - 53
IAM 250-300-350-400/C300 H2 - INSTALLATION DRAWING	"	54 - 55
IAM 200/B10 H2 - INSTALLATION DRAWING	"	56 - 57
IAM H2/PH - INSTALLATION DRAWING	"	58 - 59
IAM H2/GM2 - INSTALLATION DRAWING	"	60 - 61
IAM H2/S - INSTALLATION DRAWING	"	62 - 63
IAM H2 - PERFORMANCE DRAWINGS	"	64 - 69
IAM H2 - ORDERING CODE	"	70

INSTALLATION DRAWING



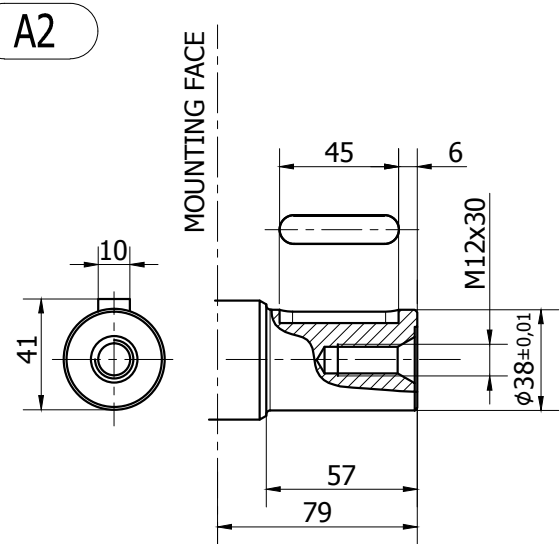
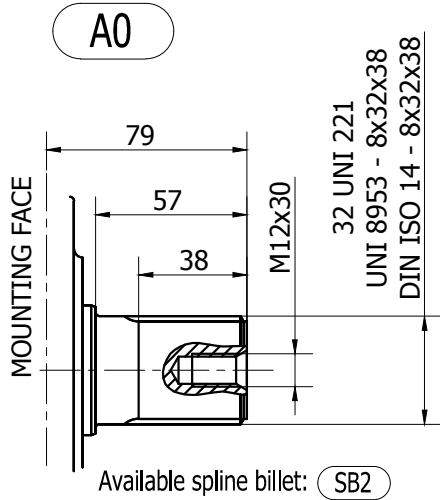
TECHNICAL DATA

		200	250	300	350
DISPLACEMENT	[cc]	198	253	314	362
SPECIFIC TORQUE	[Nm/bar]	3.2	4.0	5.0	5.8
MAX. CONT. PRESSURE	[bar]	250	250	250	250
HYDROSTATIC TEST PRES-SURE	[bar]	420	420	420	420
MAX. CONT. SPEED	[rpm]	800	750	750	650
PEAK SPEED (***)	[rpm]	900	850	850	750
MAX. CONT. POWER (****)	[kW]	33	33	33	33
MAX. POWER	[kW]	49	49	49	49
MAX. CASE PRESSURE	[bar]	6	6	6	6
DRY WEIGHT	[kg]	42	42	42	42
TEMPERATURE RANGE (**)	[°C]	-30÷70	-30÷70	-30÷70	-30÷70

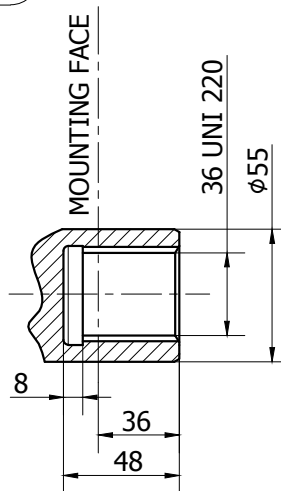
- (*) The standard distributor (D40) is shown. Please refer to distributors section (pag. 176-177) for different distributor interfaces.
- (**) Please refer to the hydraulic fluid recommendations (pag. 10-11).
- (***) Do not exceed maximum power (see pag. 13).
- (****) For motor operation with a continuous duty cycle at maximum continuous power the flushing is usually required. For more information please contact our technical department.

The data specified into the catalogue are for product description purpose only and must not be interpreted as warranted characteristics in legal sense. Italgrou S.r.l. reserves the right to implement modifications without notice. All partial or total reproduction and copy without written authorization of Italgrou S.r.l. is strictly forbidden.

SHAFT CONFIGURATIONS

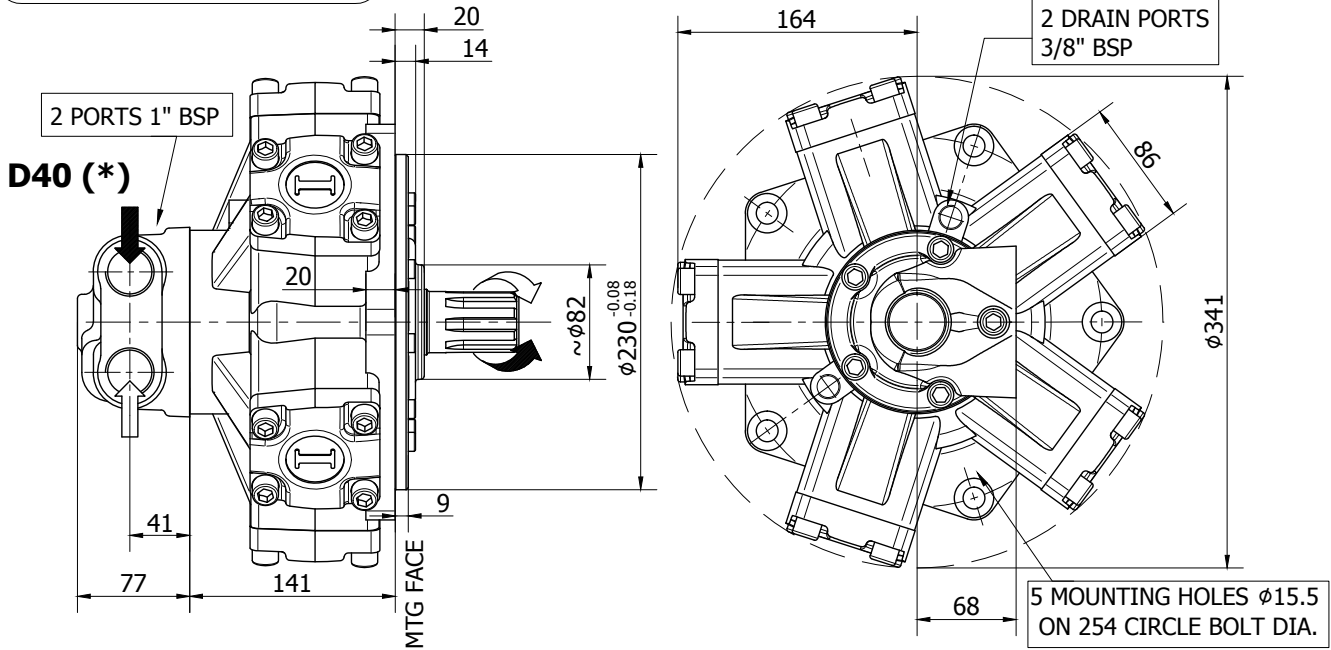


A3



The data specified into the catalogue are for product description purpose only and must not be interpreted as warranted characteristics in legal sense. Italgrou S.r.l. reserves the right to implement modifications without notice. All partial or total reproduction and copy without written authorization of Italgrou S.r.l. is strictly forbidden.

INSTALLATION DRAWING



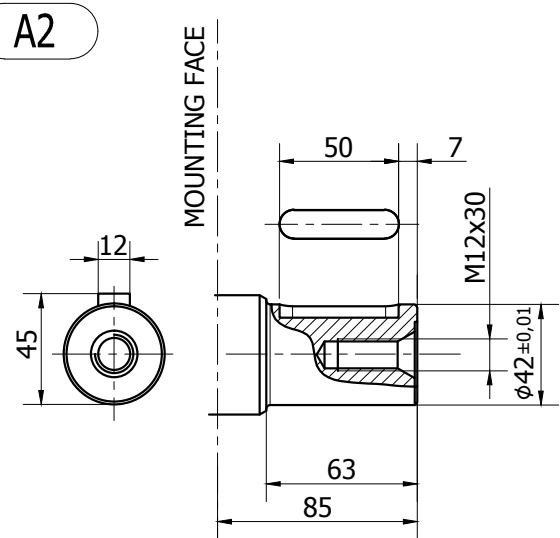
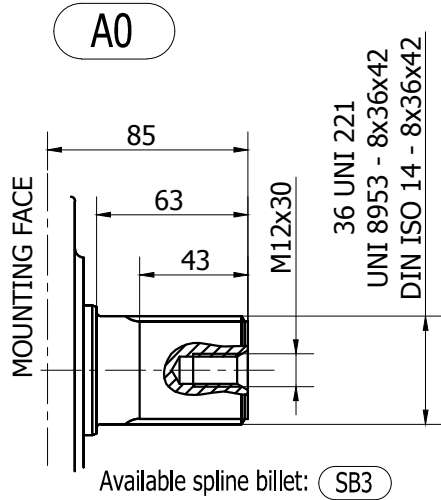
TECHNICAL DATA

		400	500	600 (*****)
DISPLACEMENT	[cc]	424	492	584
SPECIFIC TORQUE	[Nm/bar]	6.7	7.8	9.3
MAX. CONT. PRESSURE	[bar]	250	250	250
HYDROSTATIC TEST PRES-SURE	[bar]	420	420	420
MAX. CONT. SPEED	[rpm]	600	500	500
PEAK SPEED (***)	[rpm]	700	600	600
MAX. CONT. POWER (****)	[kW]	33	33	33
MAX. POWER	[kW]	49	49	49
MAX. CASE PRESSURE	[bar]	6	6	6
DRY WEIGHT	[kg]	42	42	42
TEMPERATURE RANGE (**)	[°C]	-30÷70	-30÷70	-30÷70

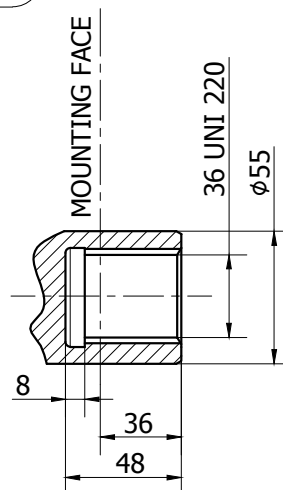
- (*) The standard distributor (D40) is shown. Please refer to distributors section (pag. 176-177) for different distributor interfaces.
- (**) Please refer to the hydraulic fluid recommendations (pag. 10-11).
- (***) Do not exceed maximum power (see pag. 13).
- (****) For motor operation with a continuous duty cycle at maximum continuous power the flushing is usually required. For more information please contact our technical department.
- (*****) Only for spare parts market. Please contact our technical department for more details.

The data specified into the catalogue are for product description purpose only and must not be interpreted as warranted characteristics in legal sense. Italgrou S.r.l. reserves the right to implement modifications without notice. All partial or total reproduction and copy without written authorization of Italgrou S.r.l. is strictly forbidden.

SHAFT CONFIGURATIONS

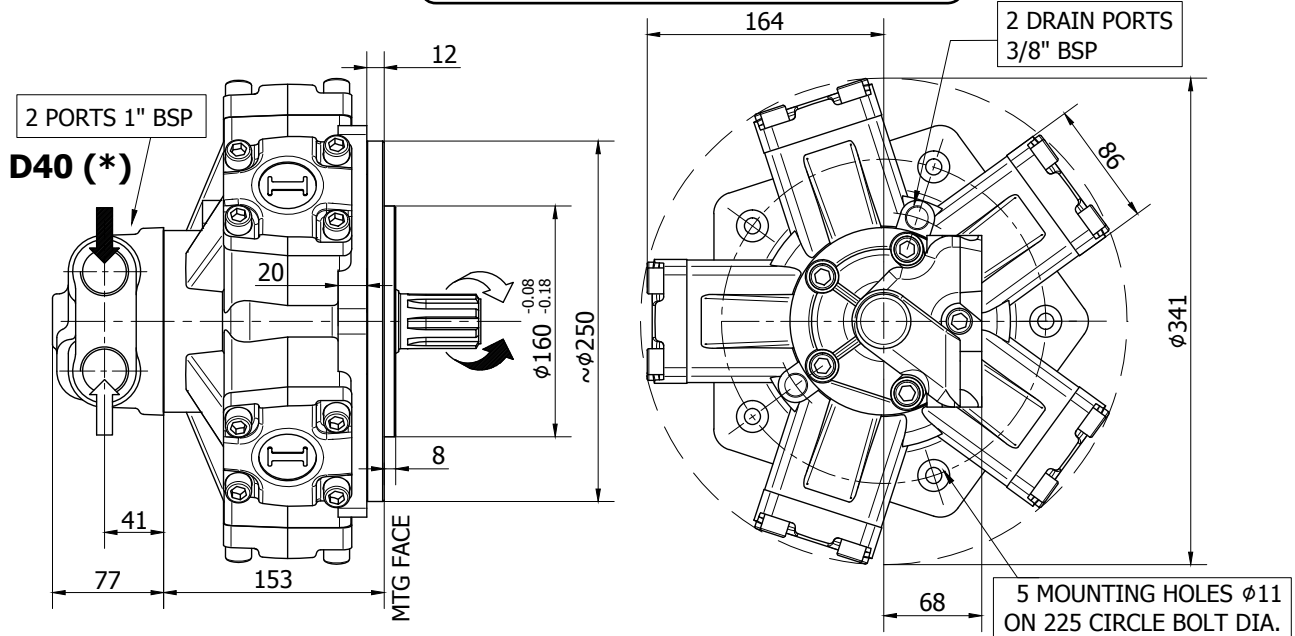


A3



INSTALLATION DRAWING

Available distributor flange: **FL1**
refer to page 184 (distributor fitting D47)



TECHNICAL DATA

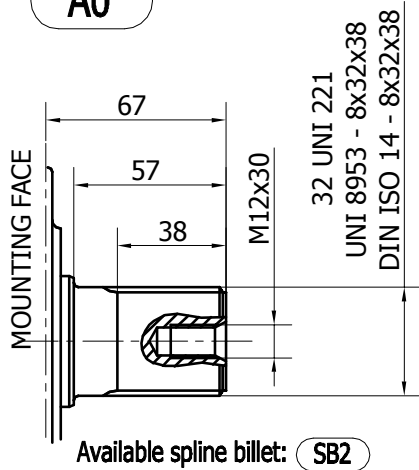
		160	190	250
DISPLACEMENT	[cc]	162	198	253
SPECIFIC TORQUE	[Nm/bar]	2.6	3.2	4.0
MAX. CONT. PRESSURE	[bar]	250	250	250
HYDROSTATIC TEST PRESSURE	[bar]	420	420	420
MAX. CONT. SPEED	[rpm]	950	800	750
PEAK SPEED (***)	[rpm]	1050	900	850
MAX. CONT. POWER (****)	[kW]	33	33	33
MAX. POWER	[kW]	49	49	49
MAX. CASE PRESSURE	[bar]	6	6	6
DRY WEIGHT	[kg]	42	42	42
TEMPERATURE RANGE (**)	[°C]	-30÷70	-30÷70	-30÷70

- (*) The standard distributor (D40) is shown. Please refer to distributors section (pag. 176-177) for different distributor interfaces.
- (**) Please refer to the hydraulic fluid recommendations (pag. 10-11).
- (***) Do not exceed maximum power (see pag. 13).
- (****) For motor operation with a continuous duty cycle at maximum continuous power the flushing is usually required. For more information please contact our technical department.

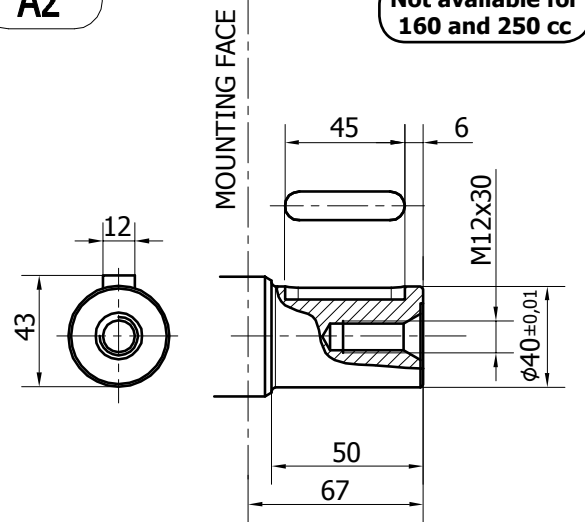
The data specified into the catalogue are for product description purpose only and must not be interpreted as warranted characteristics in legal sense. Italgrou S.r.l. reserves the right to implement modifications without notice. All partial or total reproduction and copy without written authorization of Italgrou S.r.l. is strictly forbidden.

SHAFT CONFIGURATIONS

A0

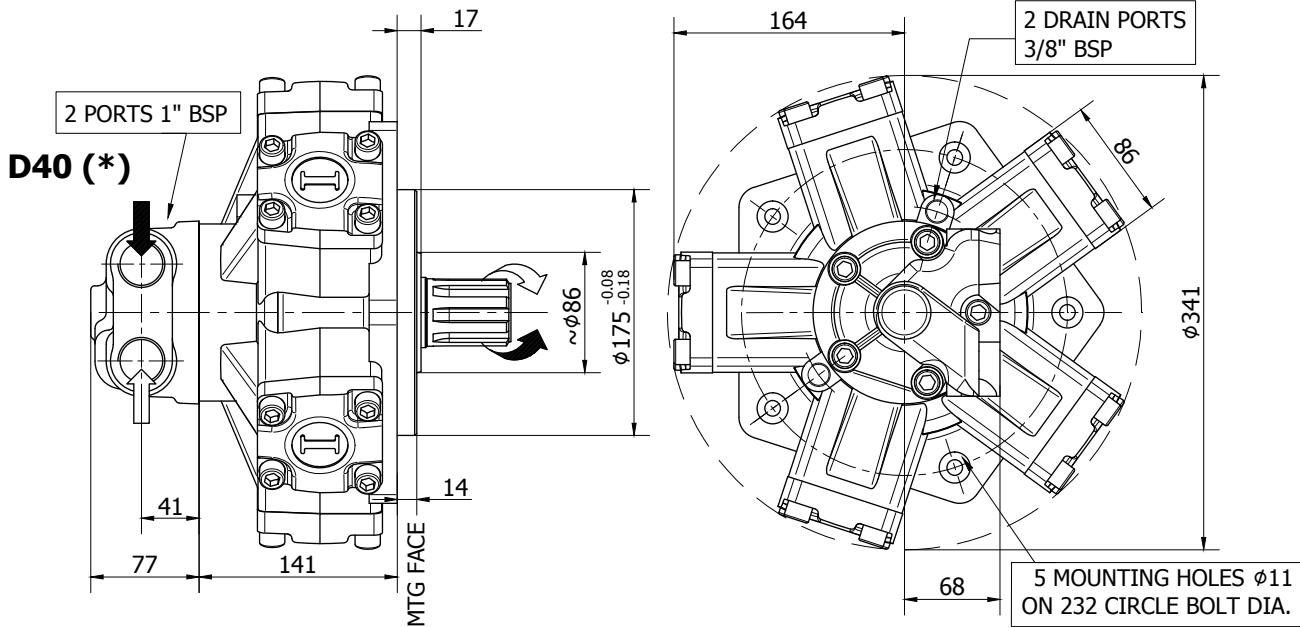


A2



INSTALLATION DRAWING

Available distributor flange: **FL1**
refer to page 184 (distributor fitting D47)



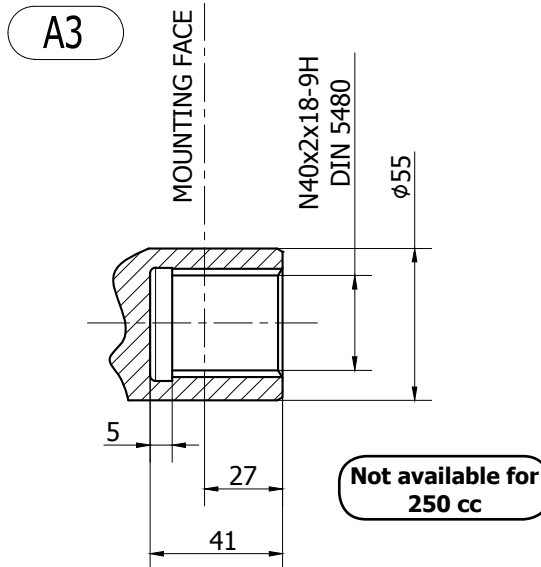
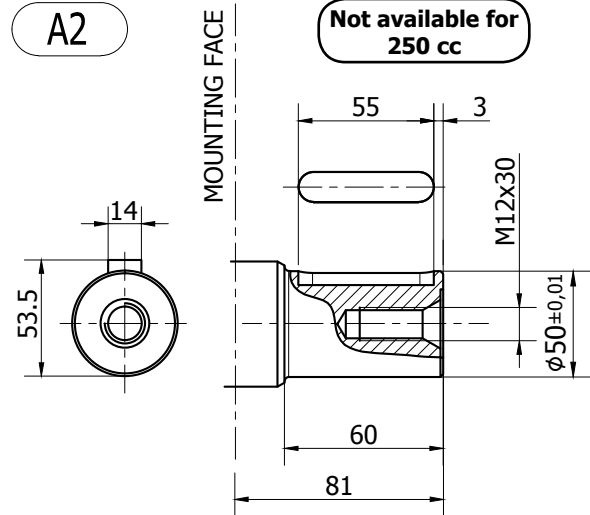
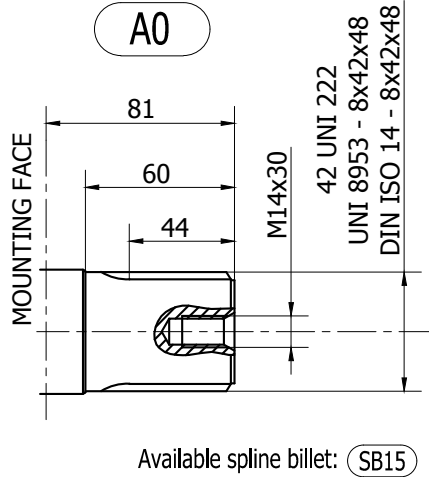
TECHNICAL DATA

		250	300	350	400
DISPLACEMENT	[cc]	253	289	339	393
SPECIFIC TORQUE	[Nm/bar]	4.0	4.6	5.4	6.3
MAX. CONT. PRESSURE	[bar]	250	250	250	250
HYDROSTATIC TEST PRES-SURE	[bar]	420	420	420	420
MAX. CONT. SPEED	[rpm]	750	750	650	600
PEAK SPEED (***)	[rpm]	850	850	750	700
MAX. CONT. POWER (****)	[kW]	33	33	33	33
MAX. POWER	[kW]	49	49	49	49
MAX. CASE PRESSURE	[bar]	6	6	6	6
DRY WEIGHT	[kg]	42	42	42	42
TEMPERATURE RANGE (**)	[°C]	-30÷70	-30÷70	-30÷70	-30÷70

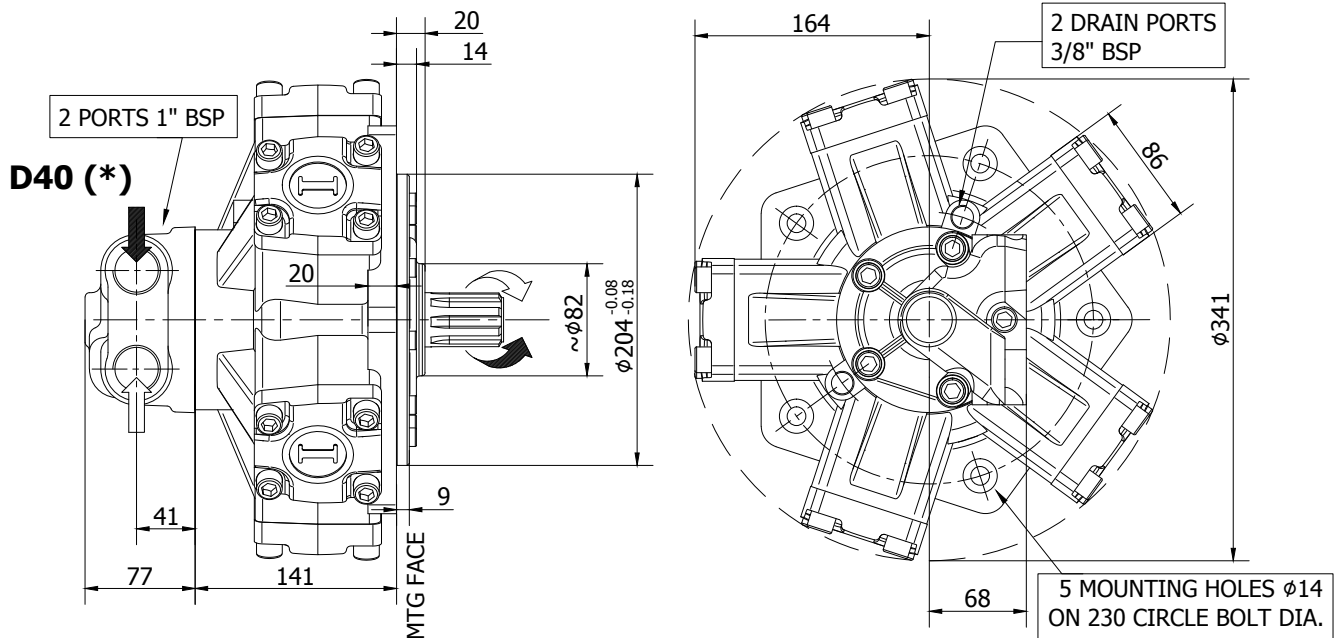
- (*) The standard distributor (D40) is shown. Please refer to distributors section (pag. 176-177) for differents distributor interfaces.
- (**) Please refer to the hydraulic fluid recommendations (pag. 10-11).
- (***) Do not exceed maximum power (see pag. 13).
- (****) For motor operation with a continuous duty cycle at maximum continuous power the flushing is usually required. For more information please contact our technical department.

The data specified into the catalogue are for product description purpose only and must not be interpreted as warranted characteristics in legal sense. Italgrou S.r.l. reserves the right to implement modifications without notice. All partial or total reproduction and copy without written authorization of Italgrou S.r.l. is strictly forbidden.

SHAFT CONFIGURATIONS



INSTALLATION DRAWING



TECHNICAL DATA

		200
DISPLACEMENT	[cc]	198
SPECIFIC TORQUE	[Nm/bar]	3.2
MAX. CONT. PRESSURE	[bar]	250
HYDROSTATIC TEST PRESSURE	[bar]	420
MAX. CONT. SPEED	[rpm]	800
PEAK SPEED (***)	[rpm]	900
MAX. CONT. POWER (****)	[kW]	33
MAX. POWER	[kW]	49
MAX. CASE PRESSURE	[bar]	6
DRY WEIGHT	[kg]	42
TEMPERATURE RANGE (**)	[°C]	-30÷70

- (*) The standard distributor (D40) is shown. Please refer to distributors section (pag. 176-177) for different distributor interfaces.

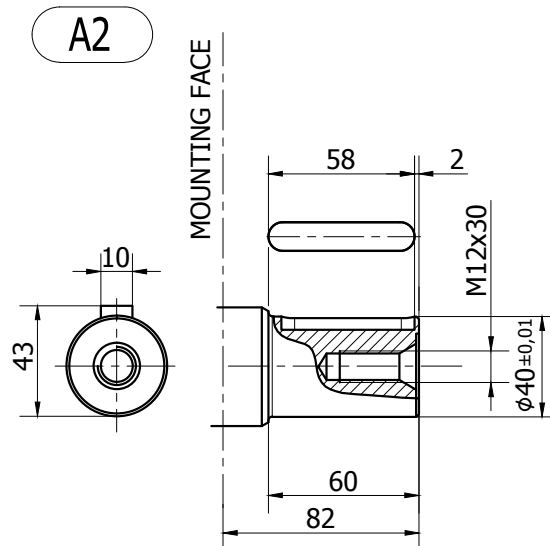
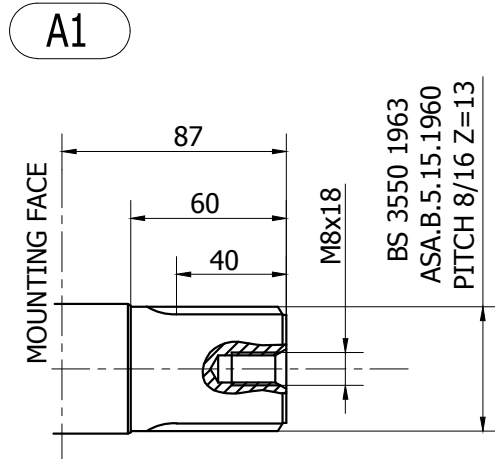
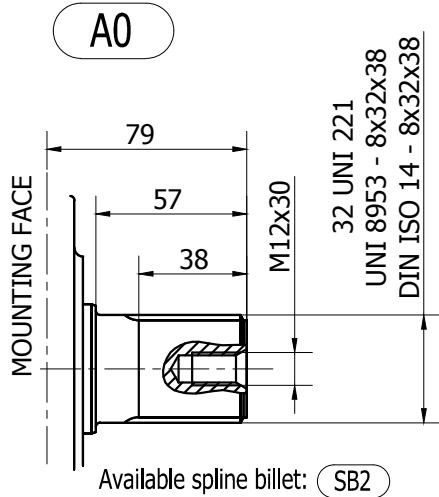
- (***) Please refer to the hydraulic fluid recommendations (pag. 10-11).

- (****) Do not exceed maximum power (see pag. 13).

- (*****) For motor operation with a continuous duty cycle at maximum continuous power the flushing is usually required. For more information please contact our technical department.

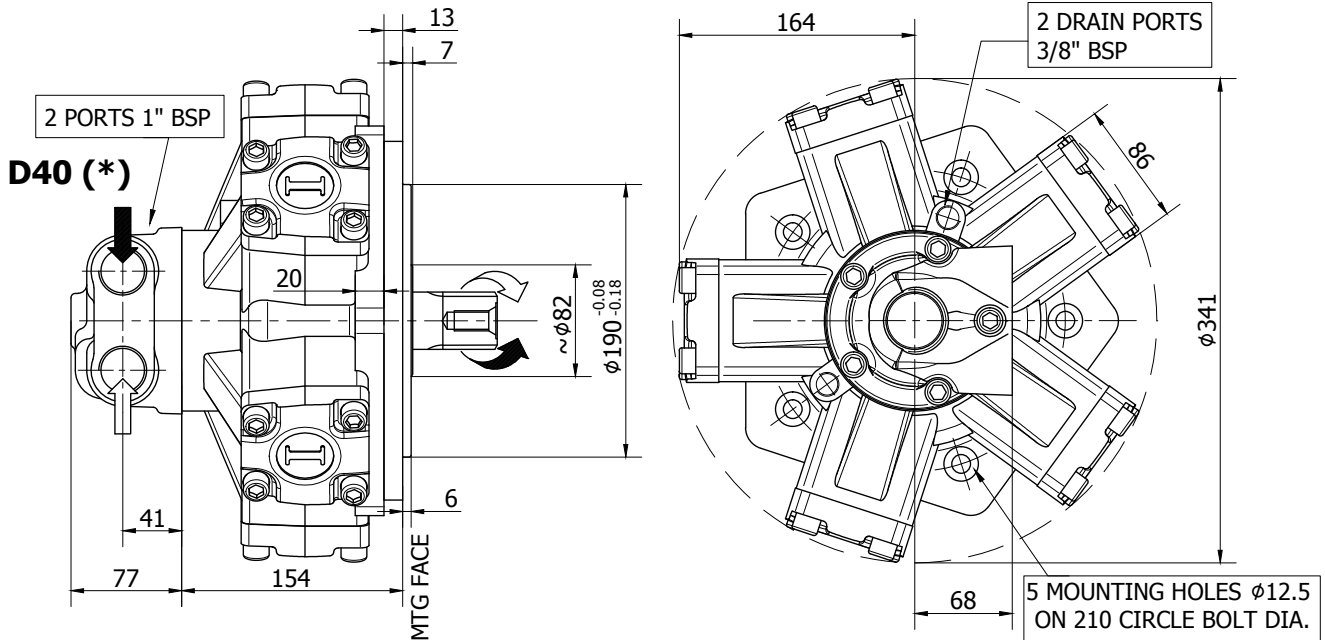
The data specified into the catalogue are for product description purpose only and must not be interpreted as warranted characteristics in legal sense. Italgrou S.r.l. reserves the right to implement modifications without notice. All partial or total reproduction and copy without written authorization of Italgrou S.r.l. is strictly forbidden.

SHAFT CONFIGURATIONS



The data specified into the catalogue are for product description purpose only and must not be interpreted as warranted characteristics in legal sense. Italgrou S.r.l. reserves the right to implement modifications without notice. All partial or total reproduction and copy without written authorization of Italgrou S.r.l. is strictly forbidden.

INSTALLATION DRAWING



TECHNICAL DATA

		200	250	300	350	400	500	600 (*****)
DISPLACEMENT	[cc]	198	253	314	362	424	492	584
SPECIFIC TORQUE	[Nm/bar]	3.2	4.0	5.0	5.8	6.7	7.8	9.3
MAX. CONT. PRESSURE	[bar]	250	250	250	250	250	250	250
HYDROSTATIC TEST PRES- SURE	[bar]	420	420	420	420	420	420	420
MAX. CONT. SPEED	[rpm]	800	750	750	650	600	500	500
PEAK SPEED (***)	[rpm]	900	850	850	750	700	600	600
MAX. CONT. POWER (****)	[kW]	33	33	33	33	33	33	33
MAX. POWER	[kW]	49	49	49	49	49	49	49
MAX. CASE PRESSURE	[bar]	6	6	6	6	6	6	6
DRY WEIGHT	[kg]	42	42	42	42	42	42	42
TEMPERATURE RANGE (**)	[°C]	-30÷70	-30÷70	-30÷70	-30÷70	-30÷70	-30÷70	-30÷70

- (*) The standard distributor (D40) is shown. Please refer to distributors section (pag. 176-177) for different distributor interfaces.

- (**) Please refer to the hydraulic fluid recommendations (pag. 10-11).

- (***) Do not exceed maximum power (see pag. 13).

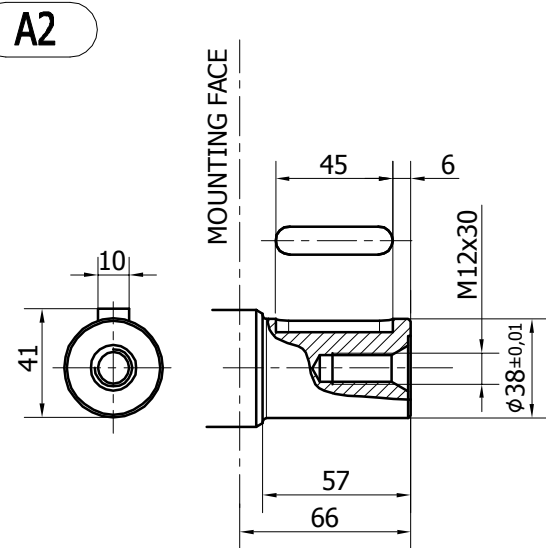
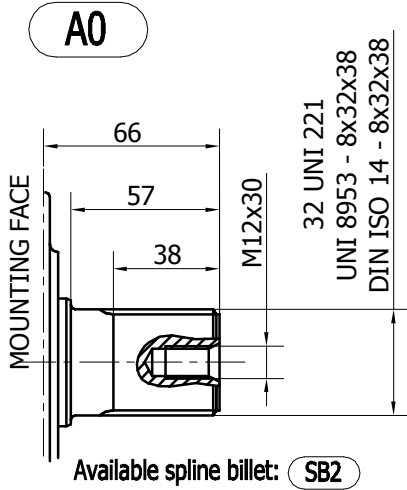
- (****) For motor operation with a continuous duty cycle at maximum continuous power the flushing is usually required.

For more information please contact our technical department.

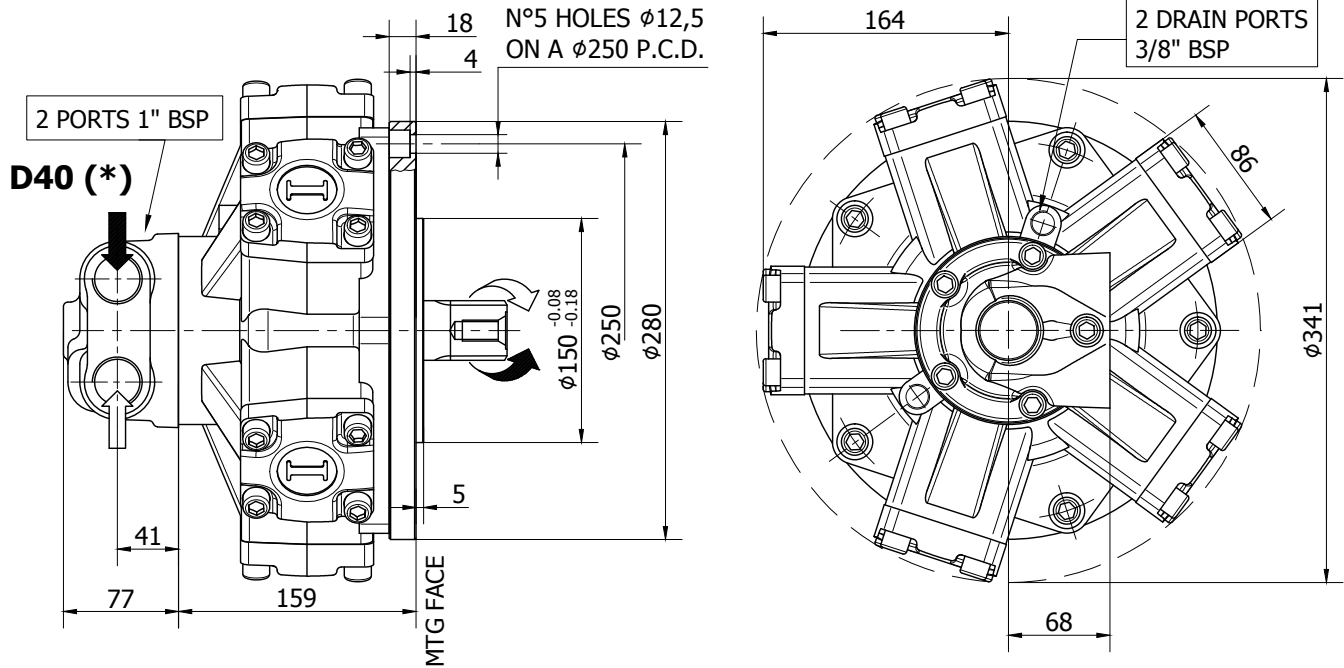
- (*****) Only for spare parts market. Please contact our technical department for more details.

The data specified into the catalogue are for product description purpose only and must not be interpreted as warranted characteristics in legal sense. Italgrou S.r.l. reserves the right to implement modifications without notice. All partial or total reproduction and copy without written authorization of Italgrou S.r.l. is strictly forbidden.

SHAFT CONFIGURATIONS



INSTALLATION DRAWING



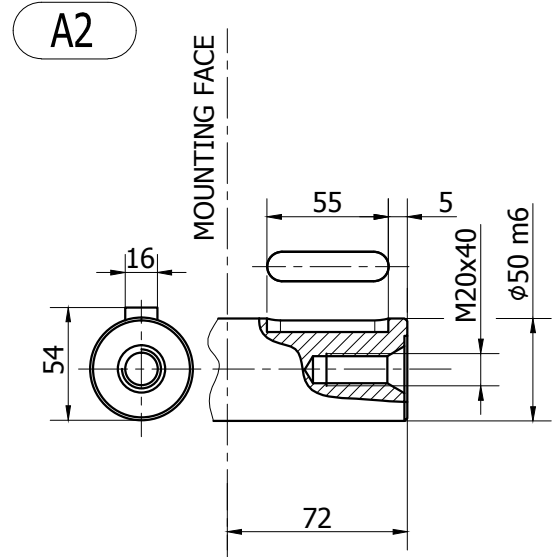
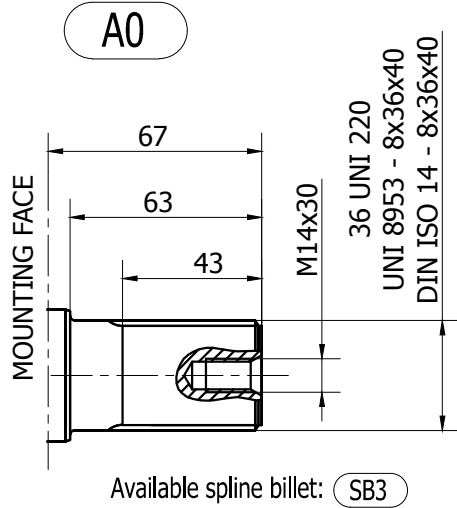
TECHNICAL DATA

	200	250	300	350	400	500	600 (****)
DISPLACEMENT [cc]	198	253	314	362	424	492	584
SPECIFIC TORQUE [Nm/bar]	3.2	4.0	5.0	5.8	6.7	7.8	9.3
MAX. CONT. PRESSURE [bar]	250	250	250	250	250	250	250
HYDROSTATIC TEST PRES-SURE [bar]	420	420	420	420	420	420	420
MAX. CONT. SPEED [rpm]	800	750	750	650	600	500	500
PEAK SPEED (***) [rpm]	900	850	850	750	700	600	600
MAX. CONT. POWER (****) [kW]	33	33	33	33	33	33	33
MAX. POWER [kW]	49	49	49	49	49	49	49
MAX. CASE PRESSURE [bar]	6	6	6	6	6	6	6
DRY WEIGHT [kg]	42	42	42	42	42	42	42
TEMPERATURE RANGE (**) [°C]	-30÷70	-30÷70	-30÷70	-30÷70	-30÷70	-30÷70	-30÷70

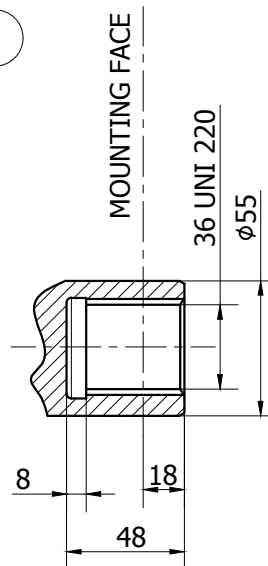
- (*) The standard distributor (D40) is shown. Please refer to distributors section (pag. 176-177) for different distributor interfaces.
- (**) Please refer to the hydraulic fluid recommendations (pag. 10-11).
- (***) Do not exceed maximum power (see pag. 13).
- (****) For motor operation with a continuous duty cycle at maximum continuous power the flushing is usually required. For more information please contact our technical department.
- (*****) Only for spare parts market. Please contact our technical department for more details.

The data specified into the catalogue are for product description purpose only and must not be interpreted as warranted characteristics in legal sense. Italgrou S.r.l. reserves the right to implement modifications without notice. All partial or total reproduction and copy without written authorization of Italgrou S.r.l. is strictly forbidden.

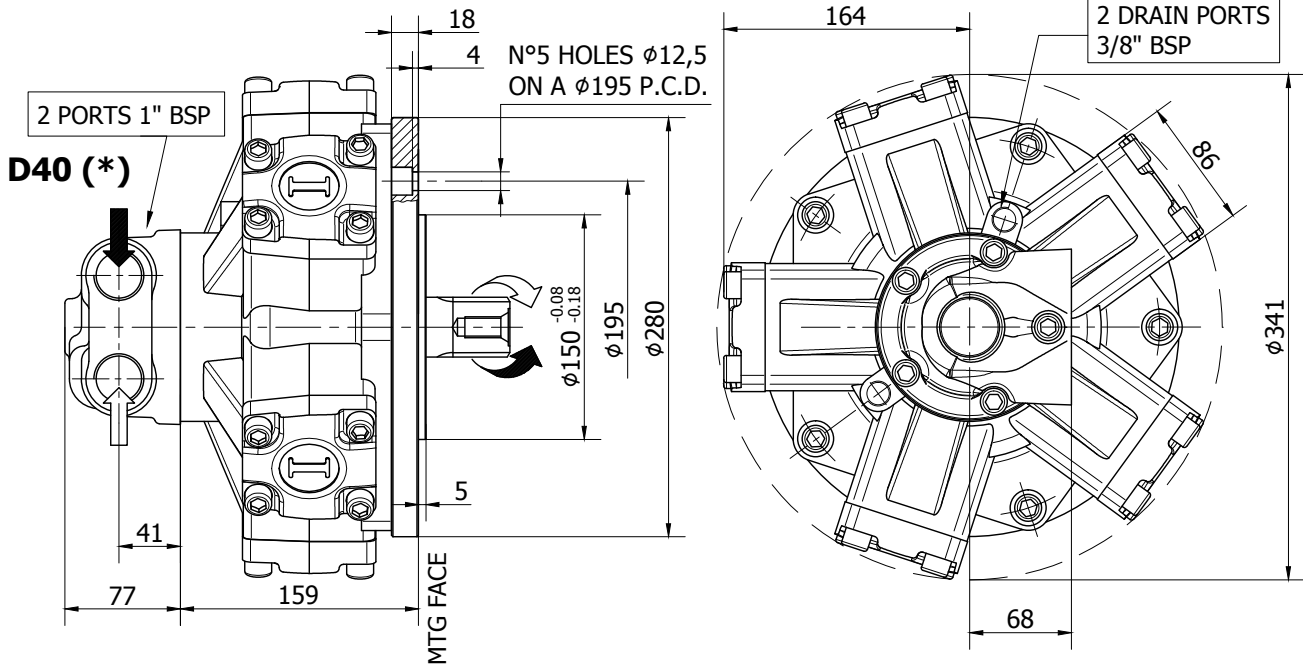
SHAFT CONFIGURATIONS



A3



INSTALLATION DRAWING



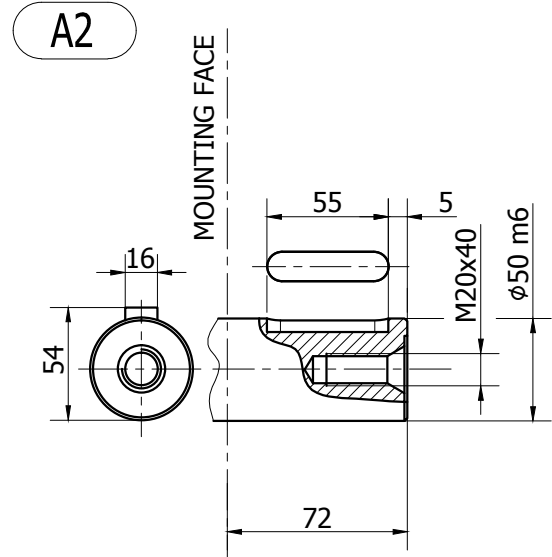
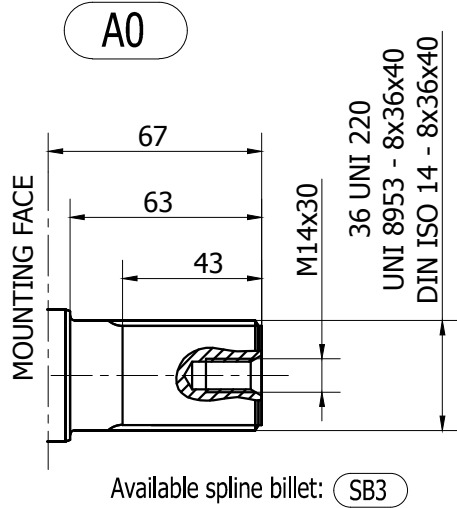
TECHNICAL DATA

	200	250	300	350	400	500	600 (****)
DISPLACEMENT [cc]	198	253	314	362	424	492	584
SPECIFIC TORQUE [Nm/bar]	3.2	4.0	5.0	5.8	6.7	7.8	9.3
MAX. CONT. PRESSURE [bar]	250	250	250	250	250	250	250
HYDROSTATIC TEST PRES-SURE [bar]	420	420	420	420	420	420	420
MAX. CONT. SPEED [rpm]	800	750	750	650	600	500	500
PEAK SPEED (***) [rpm]	900	850	850	750	700	600	600
MAX. CONT. POWER (****) [kW]	33	33	33	33	33	33	33
MAX. POWER [kW]	49	49	49	49	49	49	49
MAX. CASE PRESSURE [bar]	6	6	6	6	6	6	6
DRY WEIGHT [kg]	42	42	42	42	42	42	42
TEMPERATURE RANGE (**) [°C]	-30÷70	-30÷70	-30÷70	-30÷70	-30÷70	-30÷70	-30÷70

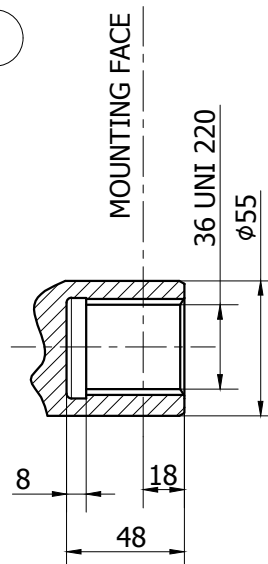
- (*) The standard distributor (D40) is shown. Please refer to distributors section (pag. 176-177) for different distributor interfaces.
- (**) Please refer to the hydraulic fluid recommendations (pag. 10-11).
- (***) Do not exceed maximum power (see pag. 13).
- (****) For motor operation with a continuous duty cycle at maximum continuous power the flushing is usually required. For more information please contact our technical department.
- (*****) Only for spare parts market. Please contact our technical department for more details.

The data specified into the catalogue are for product description purpose only and must not be interpreted as warranted characteristics in legal sense. Italgrou S.r.l. reserves the right to implement modifications without notice. All partial or total reproduction and copy without written authorization of Italgrou S.r.l. is strictly forbidden.

SHAFT CONFIGURATIONS



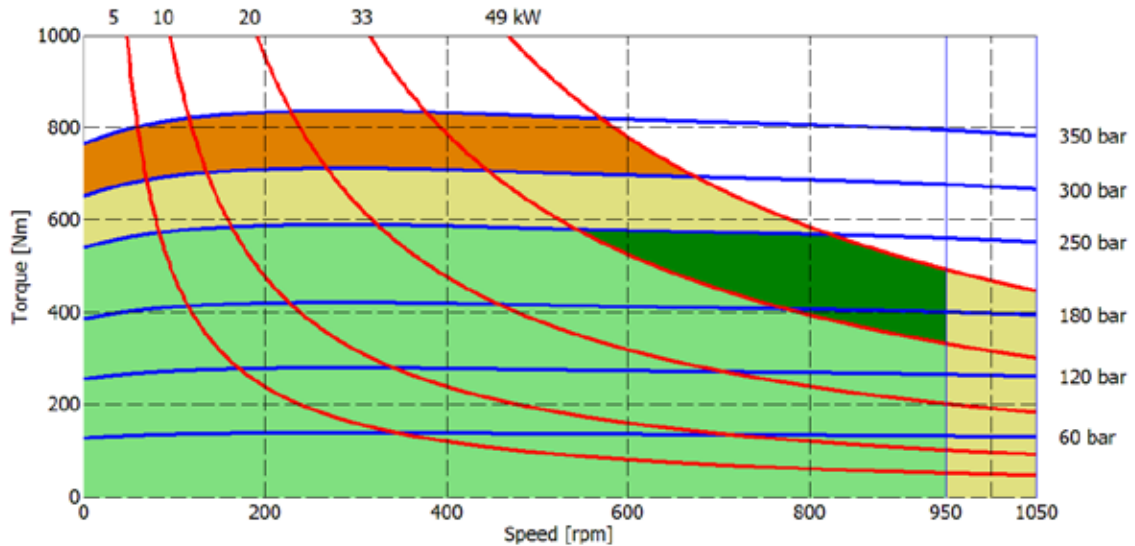
A3



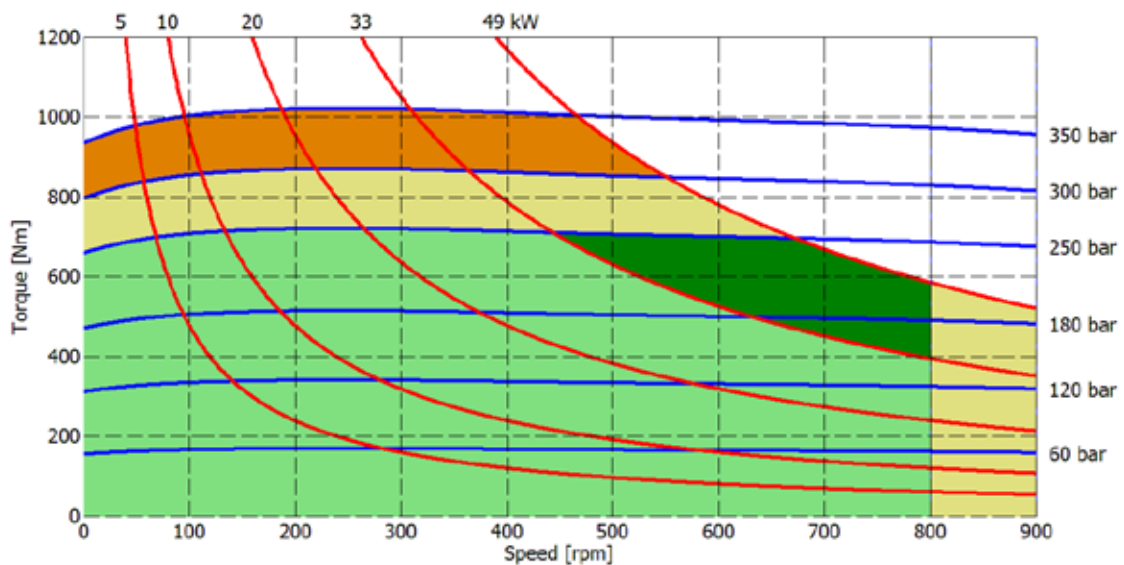
The data specified into the catalogue are for product description purpose only and must not be interpreted as warranted characteristics in legal sense. Italgrou S.r.l. reserves the right to implement modifications without notice. All partial or total reproduction and copy without written authorization of Italgrou S.r.l. is strictly forbidden.

IAM H2 - PERFORMANCE DIAGRAMS

160 cc



190 cc



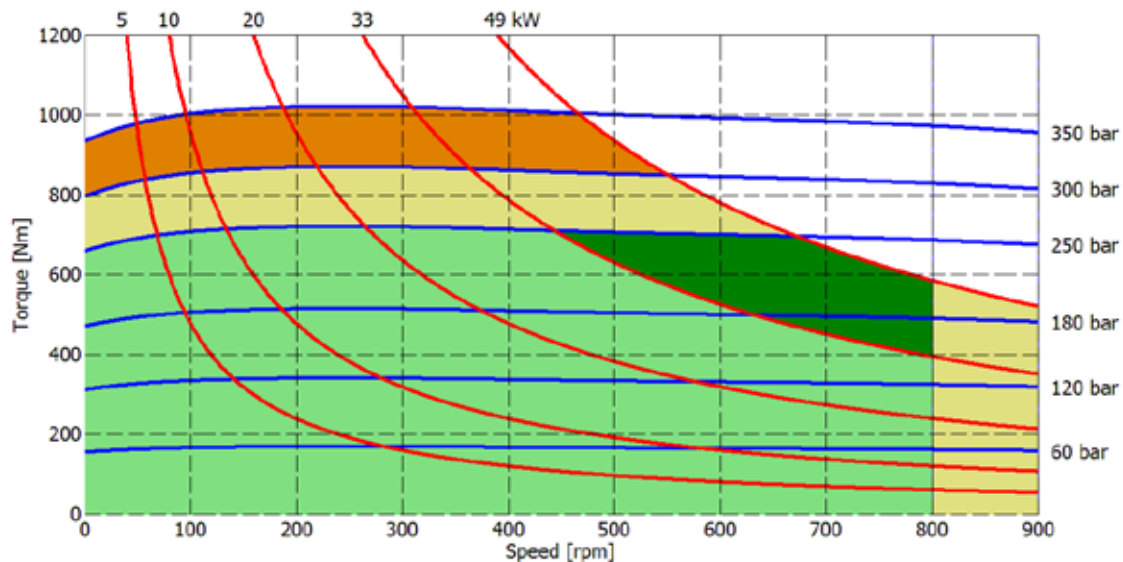
- Continuous operation
- Continuous operation with flushing or intermittent operation (see below for intermittent operation)
- Intermittent operation: permitted for a 15% of duty cycle, for 3 minutes maximum period
- Peak operation: permitted for very short periods (3-5 seconds every 10-15 minutes)

The above diagrams are referring to the hydraulic motor working with a fluid in ideal conditions (viscosity at 40 cSt). In case the working temperature increases and viscosity reach values under the recommended values (see hydraulic fluid recommendations) flushing must be performed or ISO oil grade must be changed. The working temperature must not overcome 70 °C.

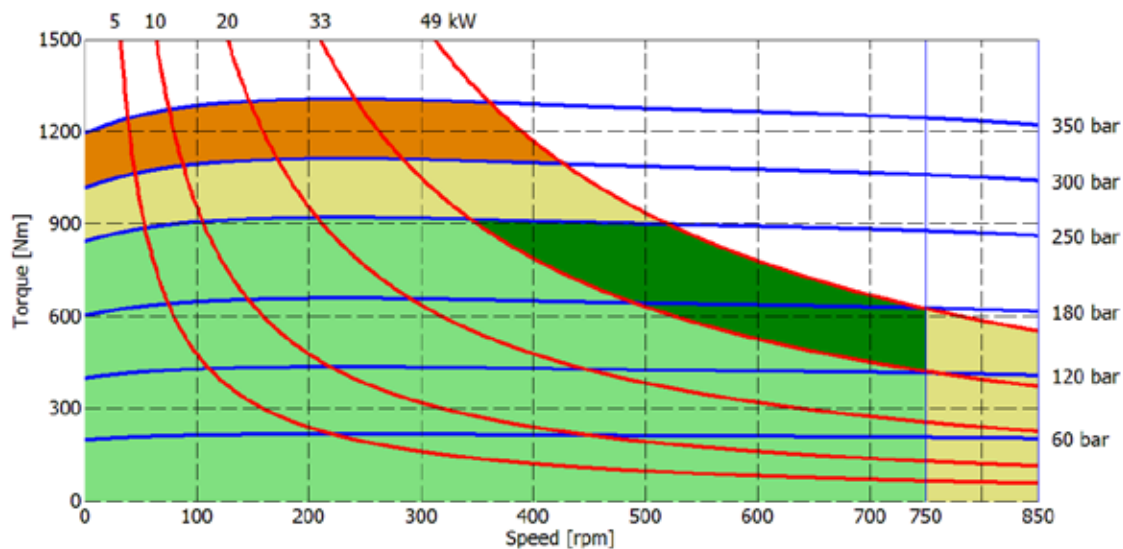
The data specified into the catalogue are for product description purpose only and must not be interpreted as warranted characteristics in legal sense. Italgrou S.r.l. reserves the right to implement modifications without notice. All partial or total reproduction and copy without written authorization of Italgrou S.r.l. is strictly forbidden.

IAM H2 - PERFORMANCE DIAGRAMS

200 cc



250 cc



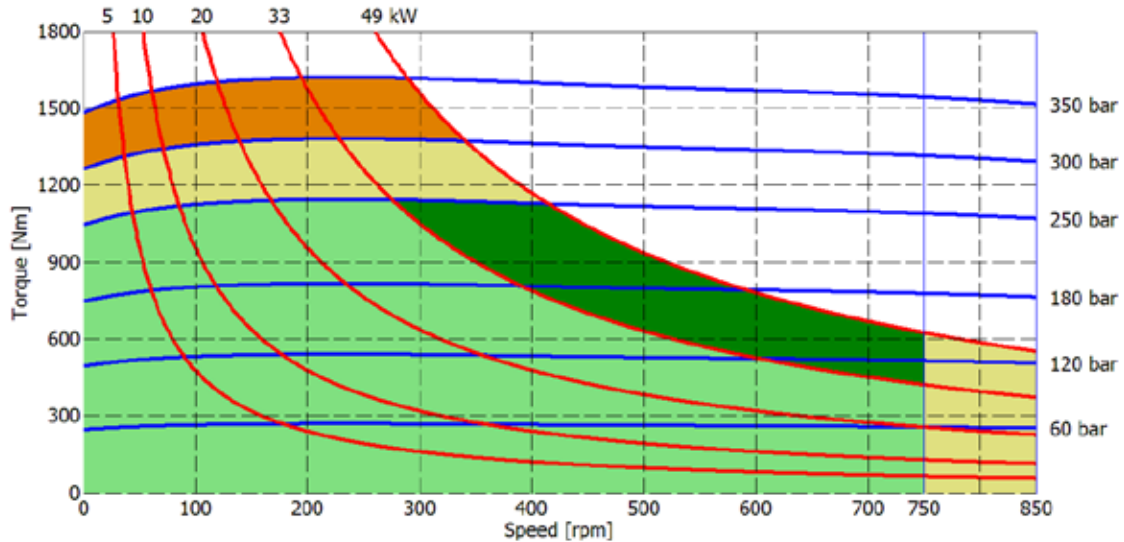
- Continuous operation
- Continuous operation with flushing or intermittent operation (see below for intermittent operation)
- Intermittent operation: permitted for a 15% of duty cycle, for 3 minutes maximum period
- Peak operation: permitted for very short periods (3-5 seconds every 10-15 minutes)

The above diagrams are referring to the hydraulic motor working with a fluid in ideal conditions (viscosity at 40 cSt). In case the working temperature increases and viscosity reach values under the recommended values (see hydraulic fluid recommendations) flushing must be performed or ISO oil grade must be changed. The working temperature must not overcome 70 °C.

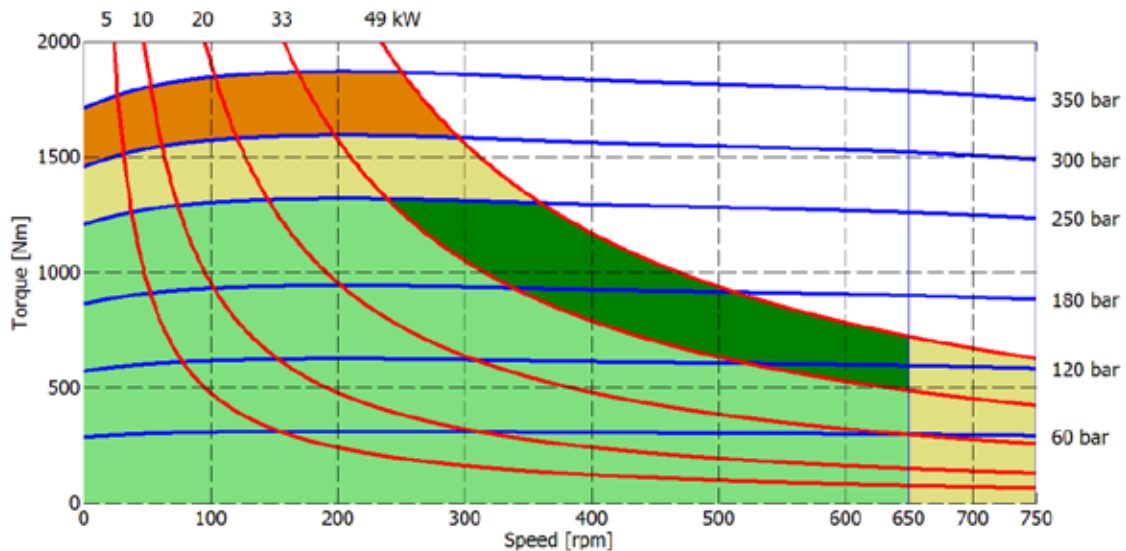
The data specified into the catalogue are for product description purpose only and must not be interpreted as warranted characteristics in legal sense. ItalgrouP S.r.l. reserves the right to implement modifications without notice. All partial or total reproduction and copy without written authorization of ItalgrouP S.r.l. is strictly forbidden.

IAM H2 - PERFORMANCE DIAGRAMS

300 cc



350 cc

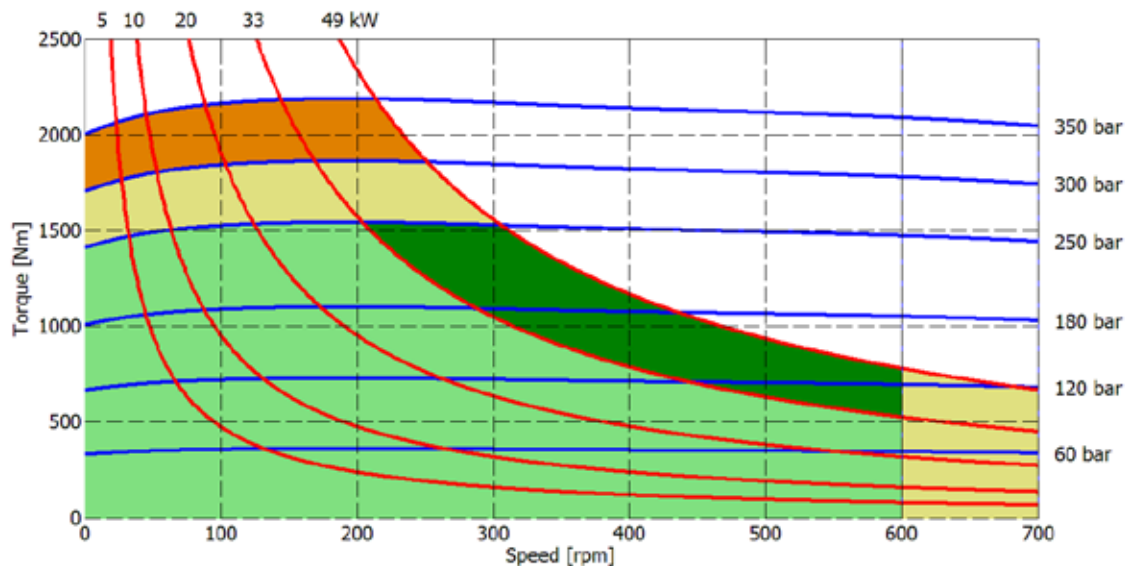


- Continuous operation
- Continuous operation with flushing or intermittent operation (see below for intermittent operation)
- Intermittent operation: permitted for a 15% of duty cycle, for 3 minutes maximum period
- Peak operation: permitted for very short periods (3-5 seconds every 10-15 minutes)

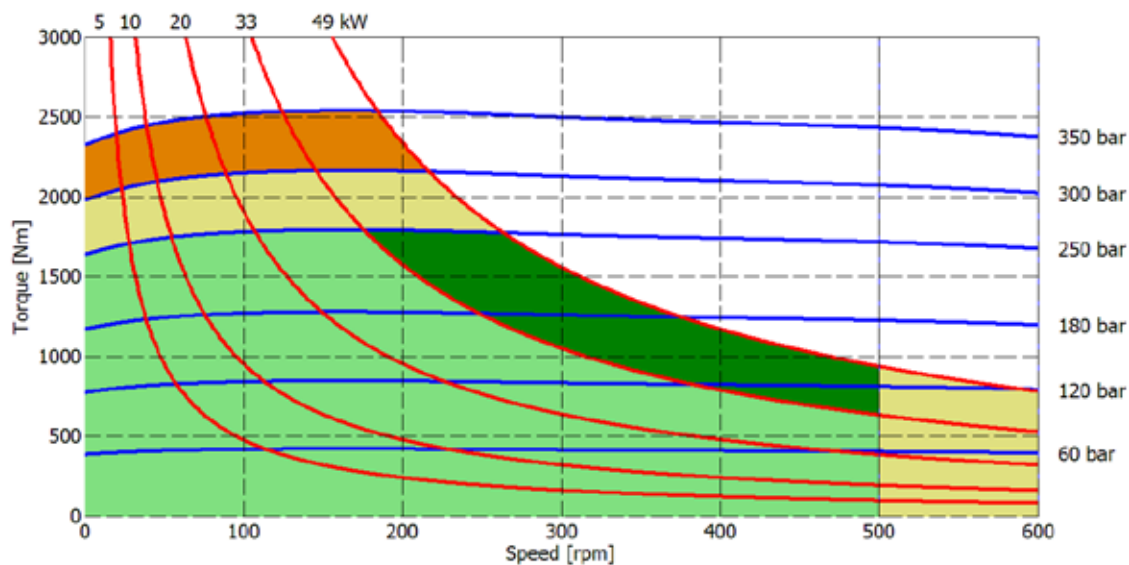
The above diagrams are referring to the hydraulic motor working with a fluid in ideal conditions (viscosity at 40 cSt). In case the working temperature increases and viscosity reach values under the recommended values (see hydraulic fluid recommendations) flushing must be performed or ISO oil grade must be changed. The working temperature must not overcome 70 °C.

The data specified into the catalogue are for product description purpose only and must not be interpreted as warranted characteristics in legal sense. Italgrou S.r.l. reserves the right to implement modifications without notice. All partial or total reproduction and copy without written authorization of Italgrou S.r.l. is strictly forbidden.

400 cc



500 cc

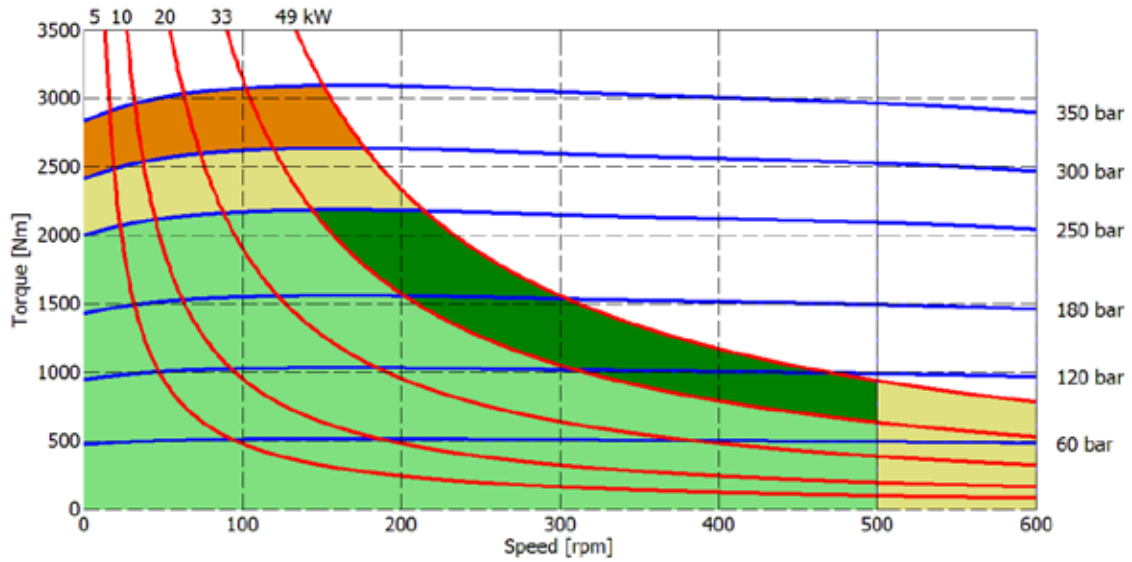


- Continuous operation
- Continuous operation with flushing or intermittent operation (see below for intermittent operation)
- Intermittent operation: permitted for a 15% of duty cycle, for 3 minutes maximum period
- Peak operation: permitted for very short periods (3-5 seconds every 10-15 minutes)

The above diagrams are referring to the hydraulic motor working with a fluid in ideal conditions (viscosity at 40 cSt). In case the working temperature increases and viscosity reach values under the recommended values (see hydraulic fluid recommendations) flushing must be performed or ISO oil grade must be changed. The working temperature must not overcome 70 °C.

The data specified into the catalogue are for product description purpose only and must not be interpreted as warranted characteristics in legal sense. ItalgrouP S.r.l. reserves the right to implement modifications without notice. All partial or total reproduction and copy without written authorization of ItalgrouP S.r.l. is strictly forbidden.

600 cc

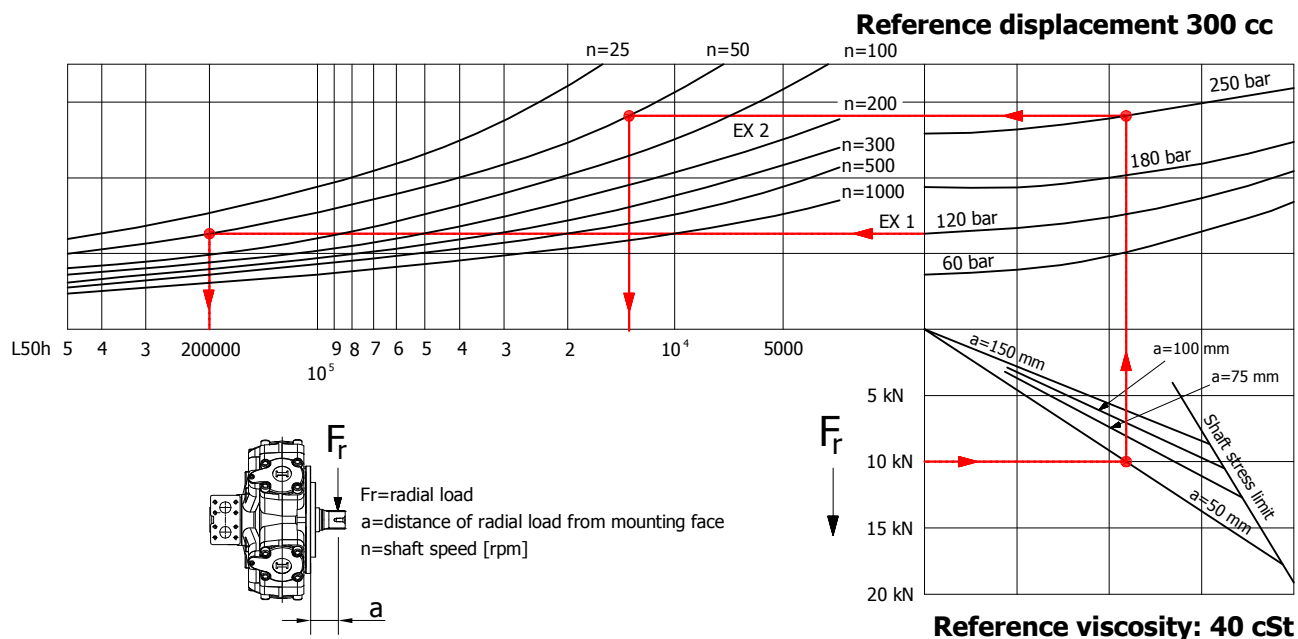


- Continuous operation
- Continuous operation with flushing or intermittent operation (see below for intermittent operation)
- Intermittent operation: permitted for a 15% of duty cycle, for 3 minutes maximum period
- Peak operation: permitted for very short periods (3-5 seconds every 10-15 minutes)

The above diagrams are referring to the hydraulic motor working with a fluid in ideal conditions (viscosity at 40 cSt). In case the working temperature increases and viscosity reach values under the recommended values (see hydraulic fluid recommendations) flushing must be performed or ISO oil grade must be changed. The working temperature must not overcome 70 °C.

The data specified into the catalogue are for product description purpose only and must not be interpreted as warranted characteristics in legal sense. Italgrou**S.r.l.** reserves the right to implement modifications without notice. All partial or total reproduction and copy without written authorization of Italgrou**S.r.l.** is strictly forbidden.

BEARING LIFE



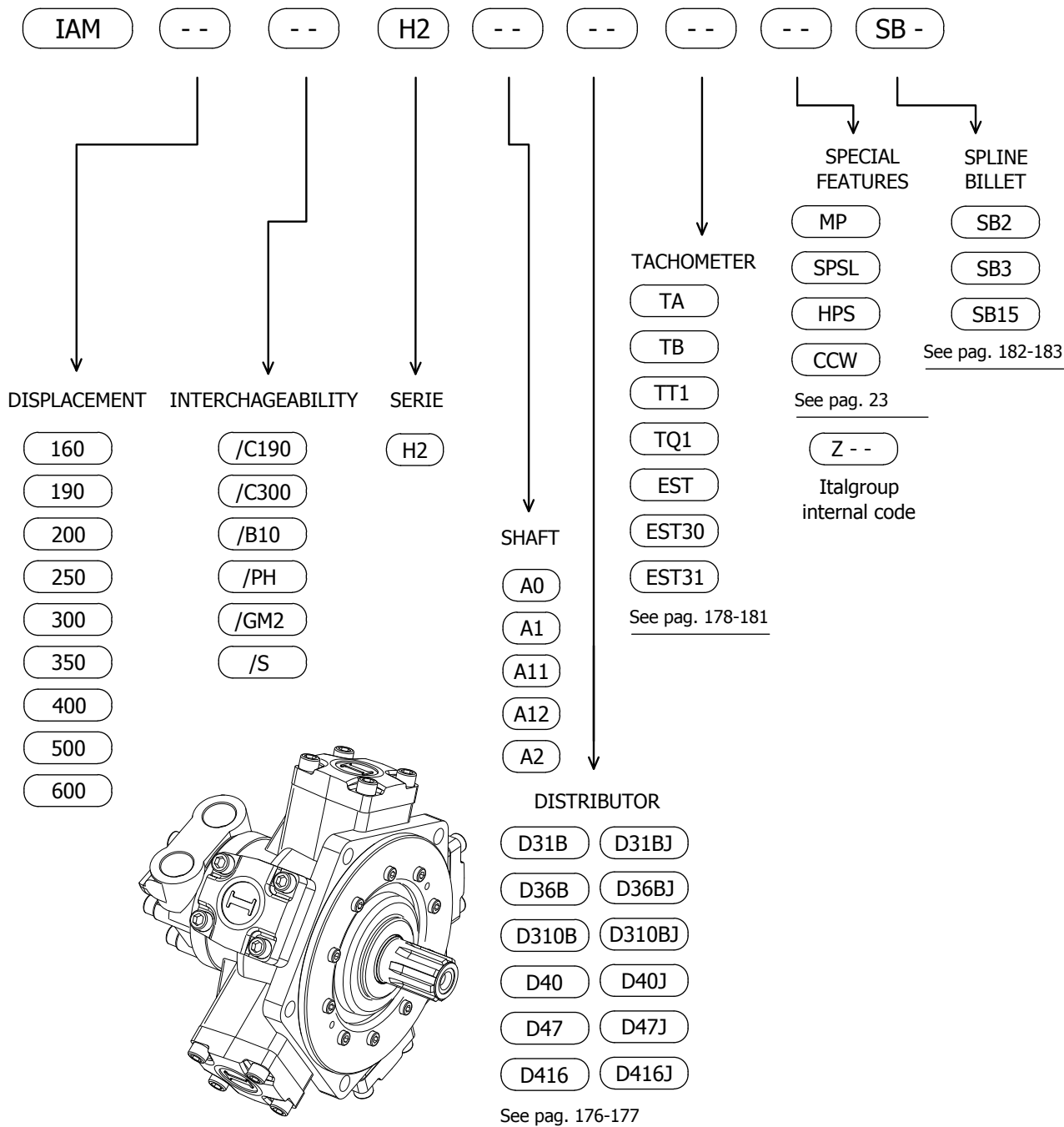
Example:

We suppose (EX1): $p=120$ [bar], $n=50$ [rpm]; we obtain an average lifetime of 200000 [h].

If we suppose (EX2): $F_r=10$ [kN], $a=50$ [mm], $n=50$ [rpm] and $p=250$ [bar] we obtain an average lifetime of 12500 [h].

The above data are referring to the IAM H2 series motors, displacement 300 cc.

IAM H2 - ORDERING CODE



EXAMPLES:

IAM 190/C190 H2 A0 D40

IAM 300 H2 A2 D310B

IAM 400/C300 H2 A3 D47 CCW

CONTACT US

Italgroup S.r.l.
Via Pacinotti 20/22
41010 - Gaggio di Piano (Modena) – Italy

Tel. +39 059 92 42 57
Fax +39 059 92 01 13
e-mail: italgroup@italgroup.eu
internet: <http://www.italgroup.eu>

REACH US



Europe

Austria
Belgium
Croatia
Czech Republic
Cyprus
Denmark
Faroe Islands
France
Finland
Germany
Greece
Iceland
Italy
Netherlands
Norway
Poland
Portugal
Russia
Slovenia
Spain
Sweden
Switzerland
Turkey
Ukraine
United Kingdom

Africa

Egypt
South Africa
Tunisia

America

Argentina
Brazil
Canada
Chile
Mexico
Peru
USA
Colombia

Asia

China
Hong Kong
India
Indonesia
Iran
Israel
Philippines
Russia
Belarus
Singapore
South Korea
Thailand
Taiwan
United Arab Emirates
Vietnam

Oceania

Australia
New Zealand

