

Italgroup[®]

HYDRAULIC MOTORS

ITALY



IAM

Single displacement hydraulic motors

The data specified into the catalogue are for product description purpose only and must not be interpreted as warranted characteristics in legal sense.
Italgroun S.r.l. reserves the right to implement modifications without notice.

All partial or total reproduction and copy without written authorization of Italgroun S.r.l. is strictly forbidden.

©2016 ITALGROUP S.R.L. - ALL RIGHTS RESERVED -

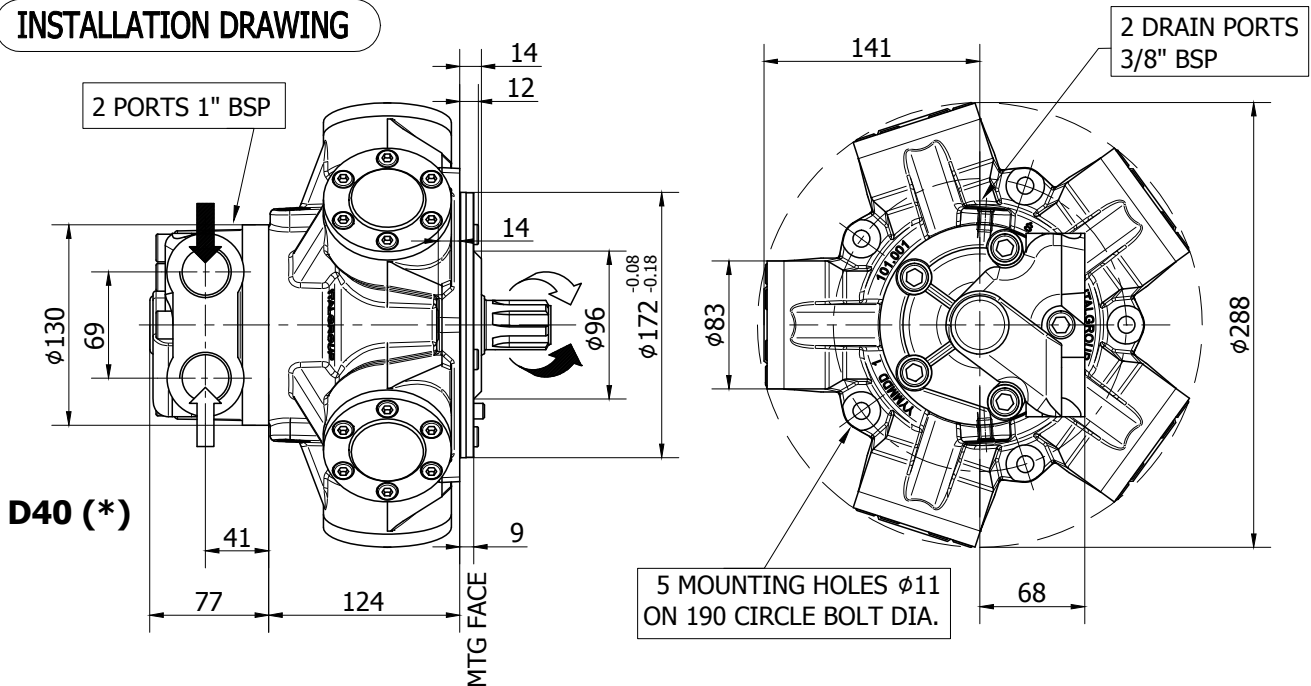
**COMPANY WITH
QUALITY SYSTEM
CERTIFIED BY DNV GL
= ISO 9001 =**

ITALGROUP SRL
IAM SERIES - IAM H1
GENERAL CATALOGUE

INDEX - IAM H1

IAM 80-100-150-175-195 H1 - INSTALLATION DRAWING	Pag	28 - 29
IAM 200-250-300 H1 - INSTALLATION DRAWING	"	30 - 31
IAM H1/GM05 - INSTALLATION DRAWING	"	32 - 33
IAM H1/BH - INSTALLATION DRAWING	"	34 - 35
IAM H1/GM1 - INSTALLATION DRAWING	"	36 - 37
IAM H1/PH - INSTALLATION DRAWING	"	38 - 39
IAM H1 - PERFORMANCE DRAWINGS	"	40 - 44
IAM H1 - ORDERING CODE	"	45

INSTALLATION DRAWING



TECHNICAL DATA

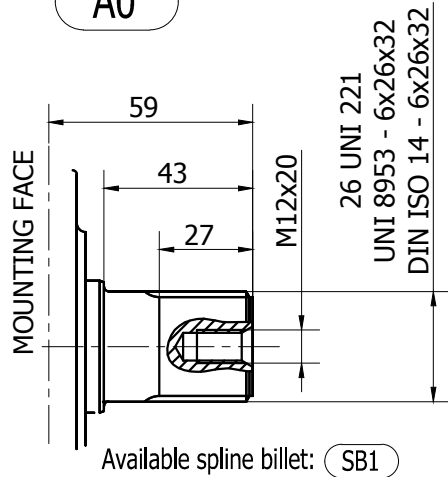
		80	100	150	175	195
DISPLACEMENT	[cc]	80	100	157	176	195
SPECIFIC TORQUE	[Nm/bar]	1.3	1.6	2.5	2.8	3.1
MAX. CONT. PRESSURE	[bar]	250	250	250	250	250
HYDROSTATIC TEST PRES-SURE	[bar]	420	420	420	420	420
MAX. CONT. SPEED	[rpm]	950	950	950	800	800
PEAK SPEED (***)	[rpm]	1050	1050	1050	900	900
MAX. CONT. POWER (****)	[kW]	27	27	27	27	27
MAX. POWER	[kW]	40	40	40	40	40
MAX. CASE PRESSURE	[bar]	6	6	6	6	6
DRY WEIGHT	[kg]	26	26	26	26	26
TEMPERATURE RANGE (**)	[°C]	-30÷70	-30÷70	-30÷70	-30÷70	-30÷70

- (*) The standard distributor (D40) is shown. Please refer to distributors section (pag. 176-177) for different distributor interfaces.
- (**) Please refer to the hydraulic fluid recommendations (pag. 10-11).
- (***) Do not exceed maximum power (see pag. 13).
- (****) For motor operation with a continuous duty cycle at maximum continuous power the flushing is usually required. For more information please contact our technical department.

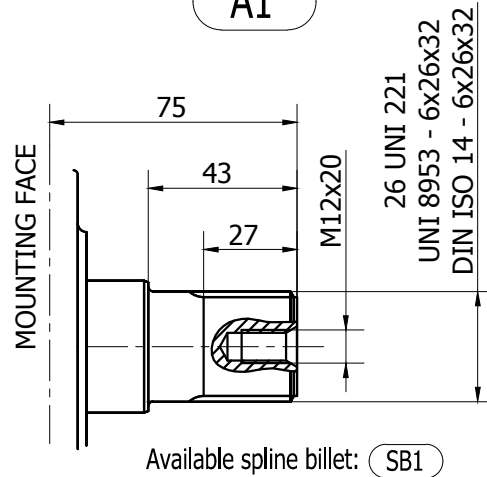
The data specified into the catalogue are for product description purpose only and must not be interpreted as warranted characteristics in legal sense. Italgrou S.r.l. reserves the right to implement modifications without notice. All partial or total reproduction and copy without written authorization of Italgrou S.r.l. is strictly forbidden.

SHAFT CONFIGURATIONS

A0

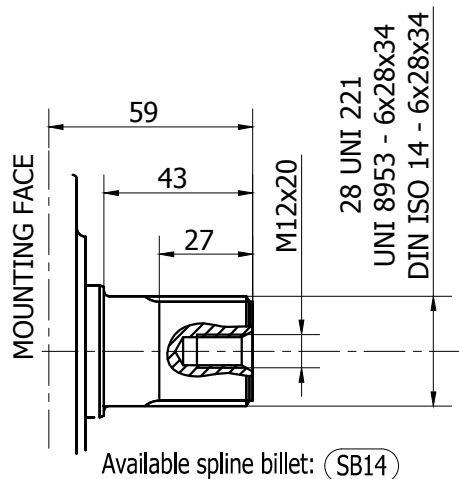


A1



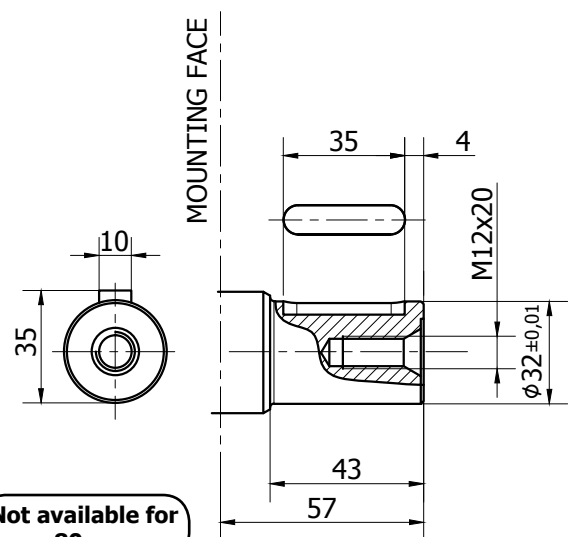
Not available for 80 cc

A11



Not available for 80 cc

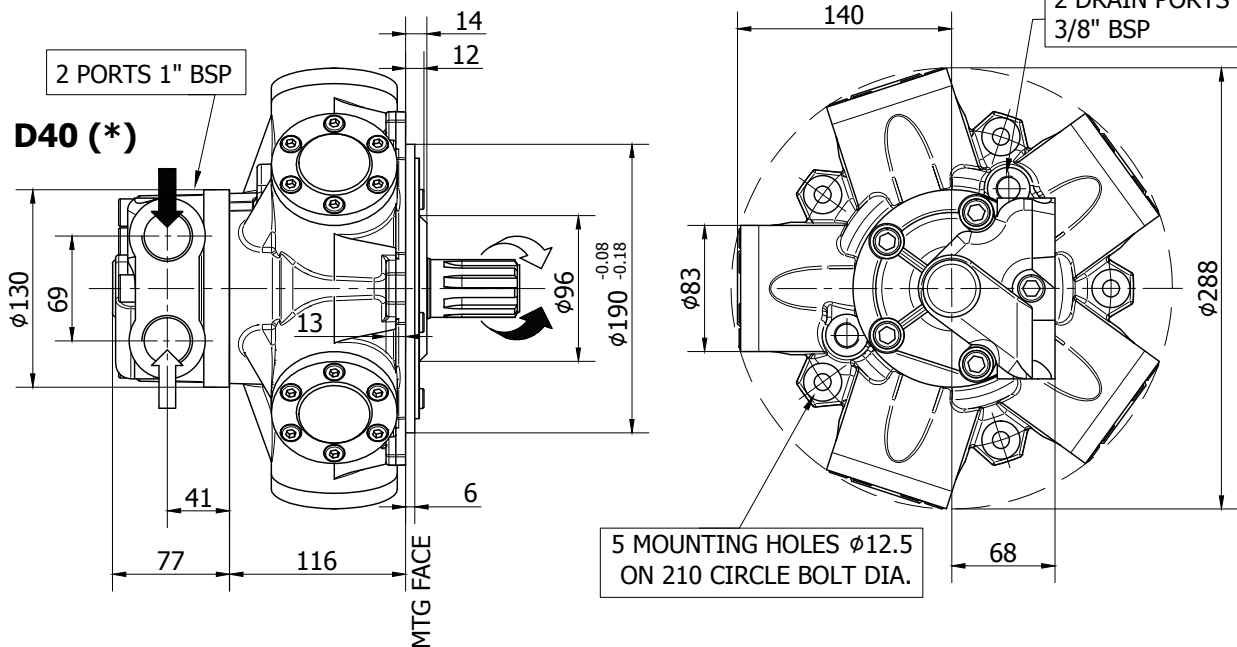
A2



Not available for 80 cc

The data specified into the catalogue are for product description purpose only and must not be interpreted as warranted characteristics in legal sense. Italgrou S.r.l. reserves the right to implement modifications without notice. All partial or total reproduction and copy without written authorization of Italgrou S.r.l. is strictly forbidden.

INSTALLATION DRAWING



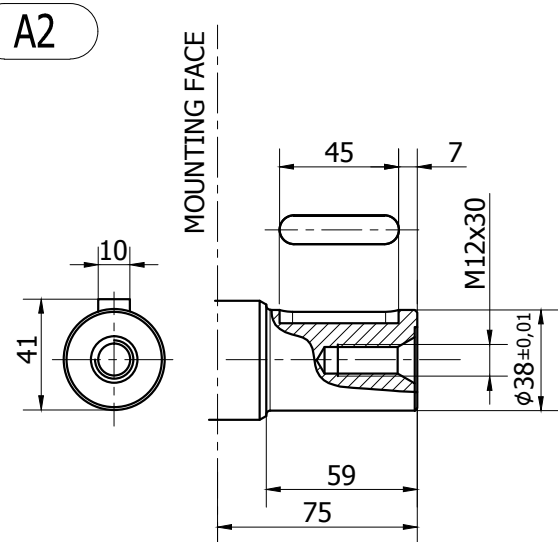
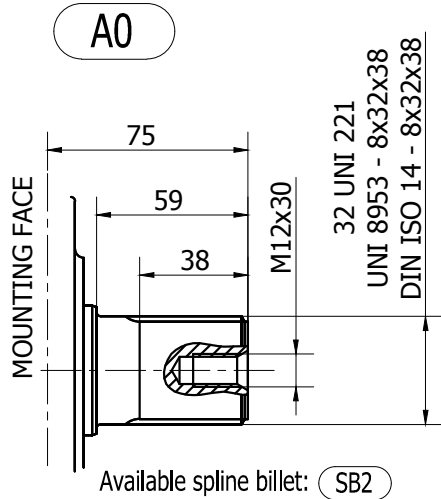
TECHNICAL DATA

		200	250	300
DISPLACEMENT	[cc]	207	257	307
SPECIFIC TORQUE	[Nm/bar]	3.3	4.1	4.9
MAX. CONT. PRESSURE	[bar]	250	250	250
HYDROSTATIC TEST PRESSURE	[bar]	420	420	420
MAX. CONT. SPEED	[rpm]	750	750	750
PEAK SPEED (***)	[rpm]	850	850	850
MAX. CONT. POWER (****)	[kW]	27	27	27
MAX. CONT. POWER WITH FLUSHING	[kW]	40	40	40
MAX. CASE PRESSURE	[bar]	6	6	6
DRY WEIGHT	[kg]	26	26	26
TEMPERATURE RANGE (**)	[°C]	-30÷70	-30÷70	-30÷70

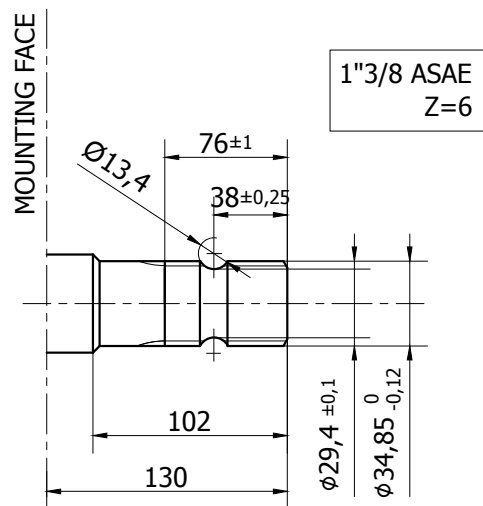
- (*) The standard distributor (D40) is shown. Please refer to distributors section (pag. 176-177) for different distributor interfaces.
- (**) Please refer to the hydraulic fluid recommendations (pag. 10-11).
- (***) Do not exceed maximum power (see pag. 13).
- (****) For motor operation with a continuous duty cycle at maximum continuous power the flushing is usually required. For more information please contact our technical department.

The data specified into the catalogue are for product description purpose only and must not be interpreted as warranted characteristics in legal sense. Italgrou S.r.l. reserves the right to implement modifications without notice. All partial or total reproduction and copy without written authorization of Italgrou S.r.l. is strictly forbidden.

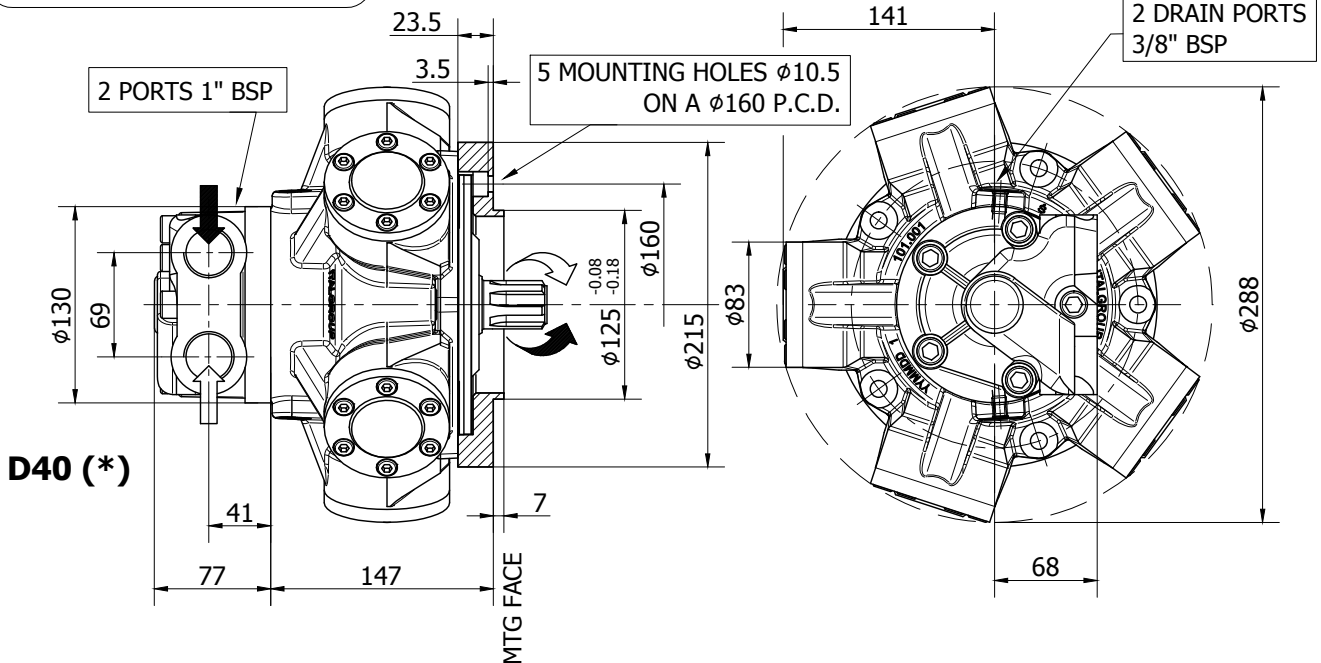
SHAFT CONFIGURATIONS



A12



INSTALLATION DRAWING



TECHNICAL DATA

		100	150	175	195	250
DISPLACEMENT	[cc]	100	157	176	195	257
SPECIFIC TORQUE	[Nm/bar]	1.6	2.5	2.8	3.1	4.1
MAX. CONT. PRESSURE	[bar]	250	250	250	250	250
HYDROSTATIC TEST PRESSURE	[bar]	420	420	420	420	420
MAX. CONT. SPEED	[rpm]	950	950	800	800	750
PEAK SPEED (***)	[rpm]	1050	1050	900	900	850
MAX. CONT. POWER (****)	[kW]	27	27	27	27	27
MAX. POWER	[kW]	40	40	40	40	40
MAX. CASE PRESSURE	[bar]	6	6	6	6	6
DRY WEIGHT	[kg]	26	26	26	26	26
TEMPERATURE RANGE (**)	[°C]	-30÷70	-30÷70	-30÷70	-30÷70	-30÷70

- (*) The standard distributor (D40) is shown. Please refer to distributors section (pag. 176-177) for different distributor interfaces.

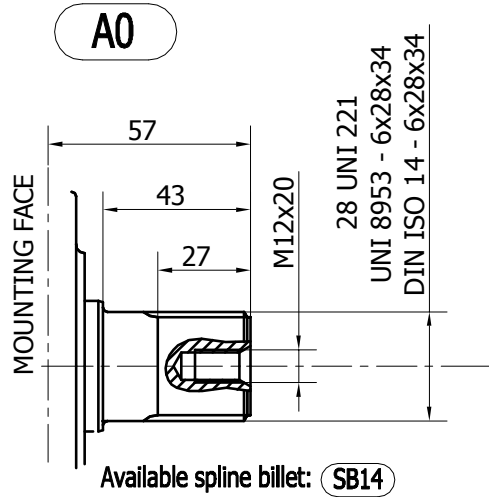
- (**) Please refer to the hydraulic fluid recommendations (pag. 10-11).

- (***) Do not exceed maximum power (see pag. 13).

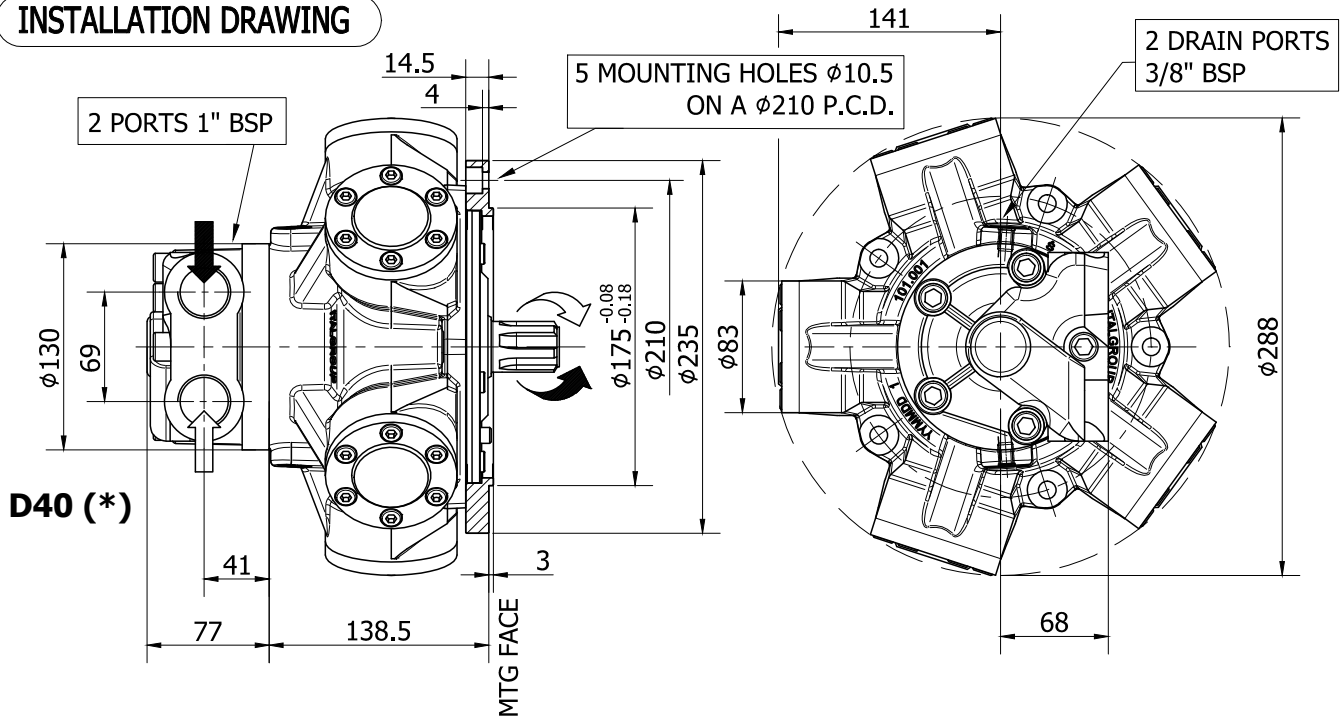
- (****) For motor operation with a continuous duty cycle at maximum continuous power the flushing is usually required. For more information please contact our technical department.

The data specified into the catalogue are for product description purpose only and must not be interpreted as warranted characteristics in legal sense. Italgrou S.r.l. reserves the right to implement modifications without notice. All partial or total reproduction and copy without written authorization of Italgrou S.r.l. is strictly forbidden.

SHAFT CONFIGURATIONS



INSTALLATION DRAWING



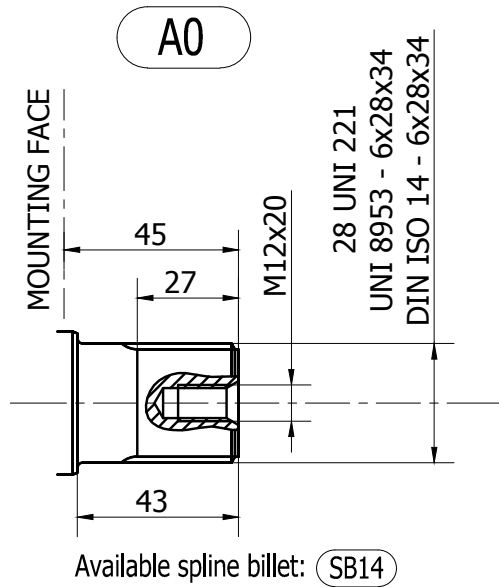
TECHNICAL DATA

		100	150	175	195	250
DISPLACEMENT	[cc]	100	157	176	195	257
SPECIFIC TORQUE	[Nm/bar]	1.6	2.5	2.8	3.1	4.1
MAX. CONT. PRESSURE	[bar]	250	250	250	250	250
HYDROSTATIC TEST PRESSURE	[bar]	420	420	420	420	420
MAX. CONT. SPEED	[rpm]	950	950	800	800	750
PEAK SPEED (***)	[rpm]	1050	1050	900	900	850
MAX. CONT. POWER (****)	[kW]	27	27	27	27	27
MAX. POWER	[kW]	40	40	40	40	40
MAX. CASE PRESSURE	[bar]	6	6	6	6	6
DRY WEIGHT	[kg]	26	26	26	26	26
TEMPERATURE RANGE (**)	[°C]	-30÷70	-30÷70	-30÷70	-30÷70	-30÷70

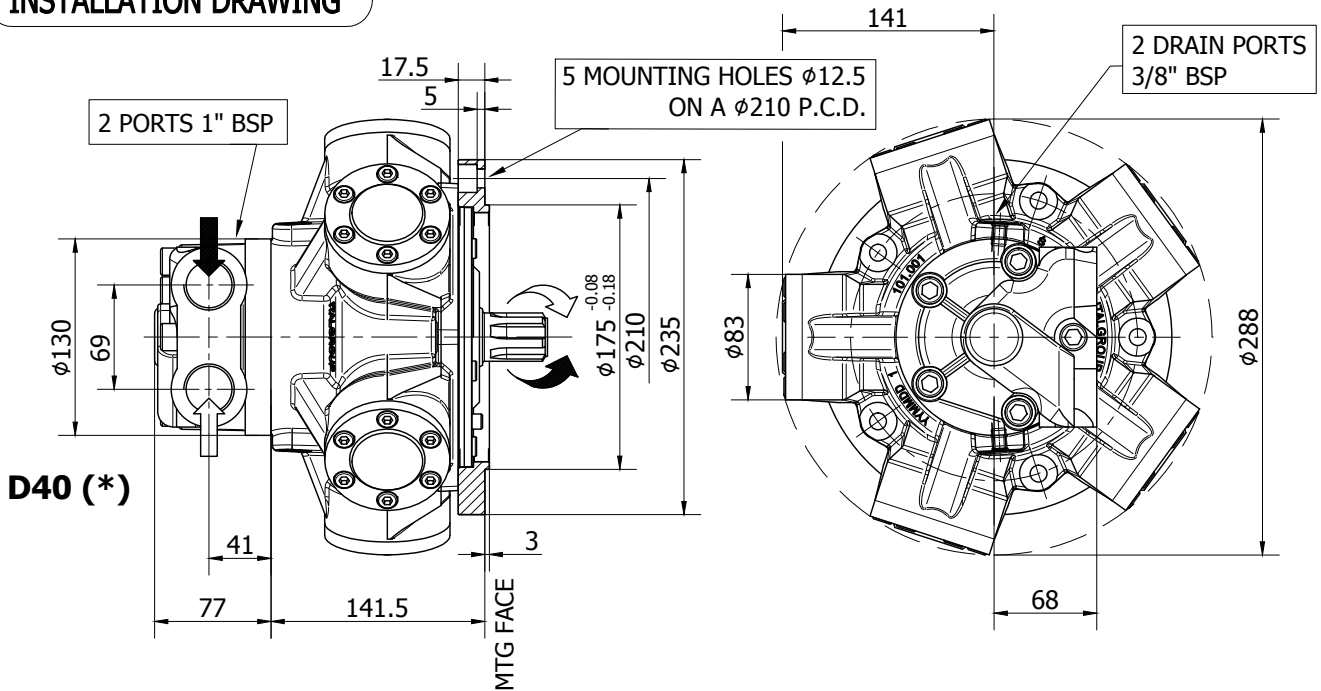
- (*) The standard distributor (D40) is shown. Please refer to distributors section (pag. 176-177) for different distributor interfaces.
- (**) Please refer to the hydraulic fluid recommendations (pag. 10-11).
- (***) Do not exceed maximum power (see pag. 13).
- (****) For motor operation with a continuous duty cycle at maximum continuous power the flushing is usually required. For more information please contact our technical department.

The data specified into the catalogue are for product description purpose only and must not be interpreted as warranted characteristics in legal sense. Italgrou S.r.l. reserves the right to implement modifications without notice. All partial or total reproduction and copy without written authorization of Italgrou S.r.l. is strictly forbidden.

SHAFT CONFIGURATIONS



INSTALLATION DRAWING



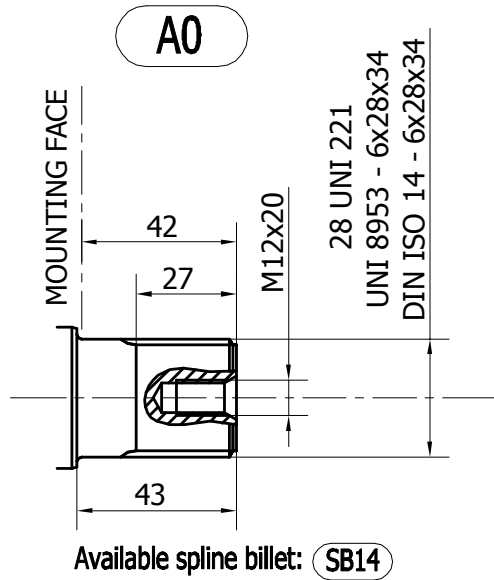
TECHNICAL DATA

		100	150	175	195	250
DISPLACEMENT	[cc]	100	157	176	195	257
SPECIFIC TORQUE	[Nm/bar]	1.6	2.5	2.8	3.1	4.1
MAX. CONT. PRESSURE	[bar]	250	250	250	250	250
HYDROSTATIC TEST PRESSURE	[bar]	420	420	420	420	420
MAX. CONT. SPEED	[rpm]	950	950	800	800	750
PEAK SPEED (***)	[rpm]	1050	1050	900	900	850
MAX. CONT. POWER (****)	[kW]	27	27	27	27	27
MAX. POWER	[kW]	40	40	40	40	40
MAX. CASE PRESSURE	[bar]	6	6	6	6	6
DRY WEIGHT	[kg]	26	26	26	26	26
TEMPERATURE RANGE (**)	[°C]	-30÷70	-30÷70	-30÷70	-30÷70	-30÷70

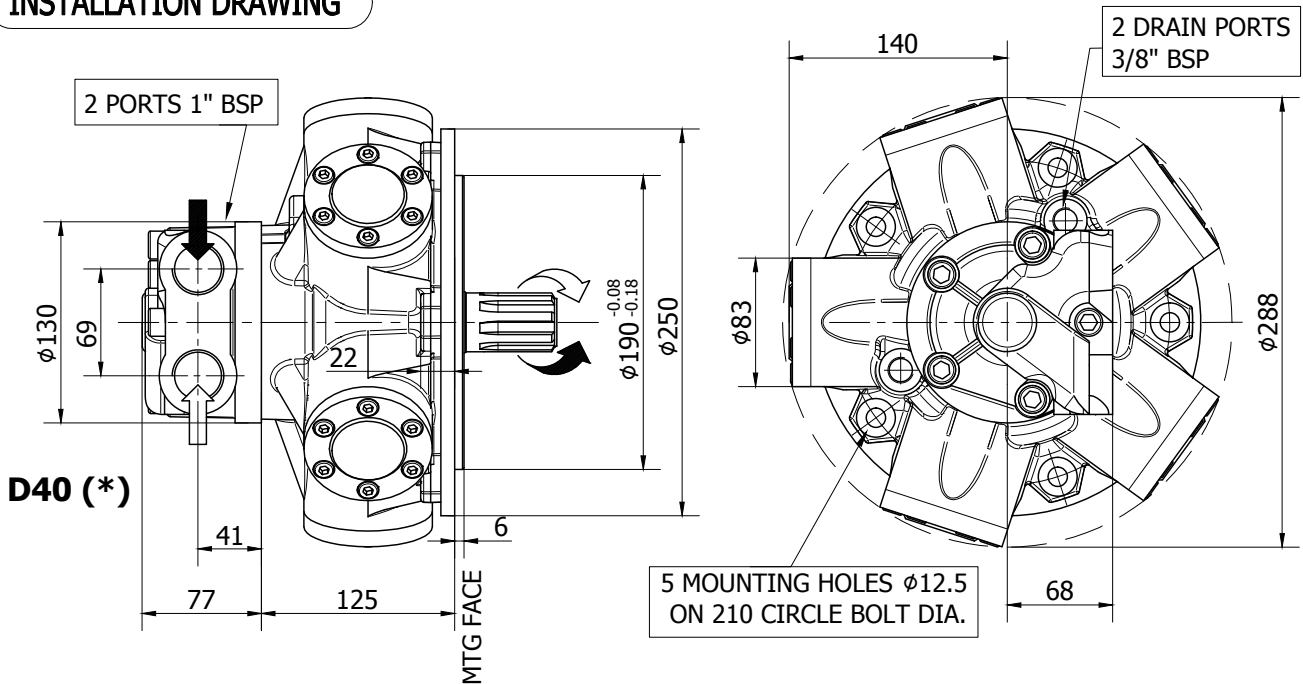
- (*) The standard distributor (D40) is shown. Please refer to distributors section (pag. 176-177) for different distributor interfaces.
- (**) Please refer to the hydraulic fluid recommendations (pag. 10-11).
- (***) Do not exceed maximum power (see pag. 13).
- (****) For motor operation with a continuous duty cycle at maximum continuous power the flushing is usually required. For more information please contact our technical department.

The data specified into the catalogue are for product description purpose only and must not be interpreted as warranted characteristics in legal sense. Italgrou S.r.l. reserves the right to implement modifications without notice. All partial or total reproduction and copy without written authorization of Italgrou S.r.l. is strictly forbidden.

SHAFT CONFIGURATIONS



INSTALLATION DRAWING



TECHNICAL DATA

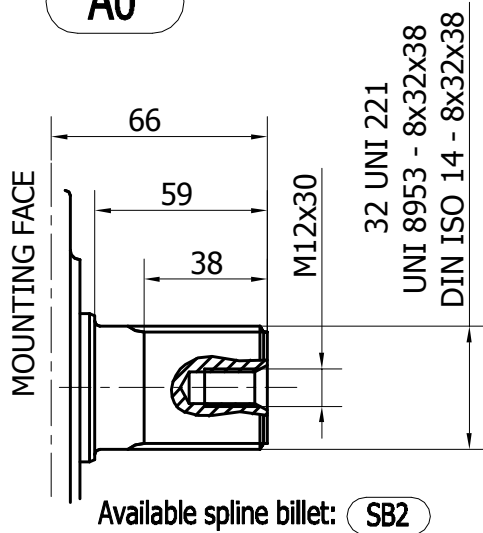
		200	250	300
DISPLACEMENT	[cc]	207	257	307
SPECIFIC TORQUE	[Nm/bar]	3.3	4.1	4.9
MAX. CONT. PRESSURE	[bar]	250	250	250
HYDROSTATIC TEST PRESSURE	[bar]	420	420	420
MAX. CONT. SPEED	[rpm]	750	750	750
PEAK SPEED (***)	[rpm]	850	850	850
MAX. CONT. POWER (****)	[kW]	27	27	27
MAX. CONT. POWER WITH FLUSHING	[kW]	40	40	40
MAX. CASE PRESSURE	[bar]	6	6	6
DRY WEIGHT	[kg]	26	26	26
TEMPERATURE RANGE (**)	[°C]	-30÷70	-30÷70	-30÷70

- (*) The standard distributor (D40) is shown. Please refer to distributors section (pag. 176-177) for different distributor interfaces.
- (**) Please refer to the hydraulic fluid recommendations (pag. 10-11).
- (***) Do not exceed maximum power (see pag. 13).
- (****) For motor operation with a continuous duty cycle at maximum continuous power the flushing is usually required. For more information please contact our technical department.

The data specified into the catalogue are for product description purpose only and must not be interpreted as warranted characteristics in legal sense. Italgrou S.r.l. reserves the right to implement modifications without notice. All partial or total reproduction and copy without written authorization of Italgrou S.r.l. is strictly forbidden.

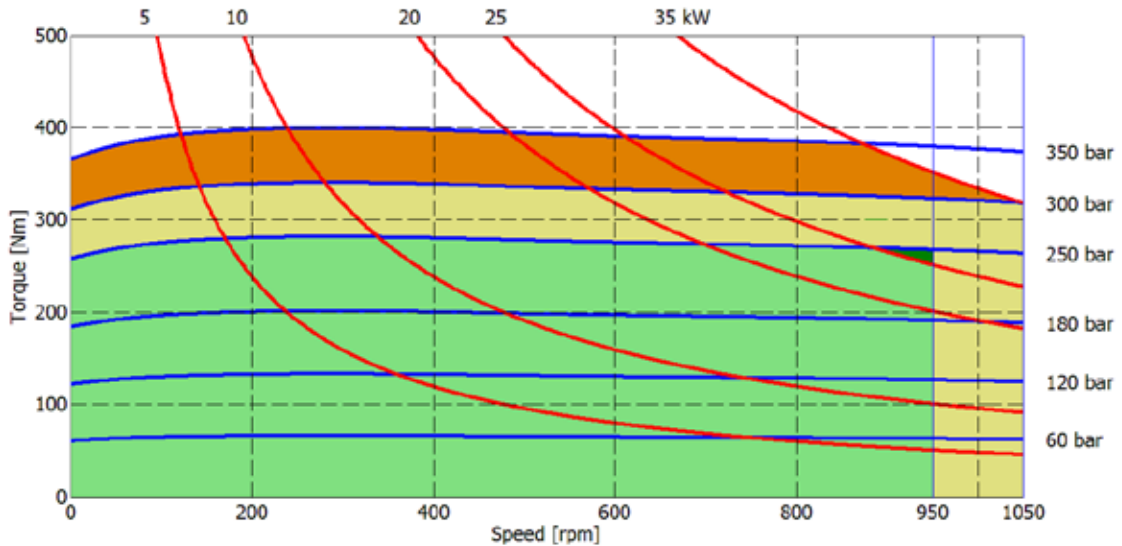
SHAFT CONFIGURATIONS

A0

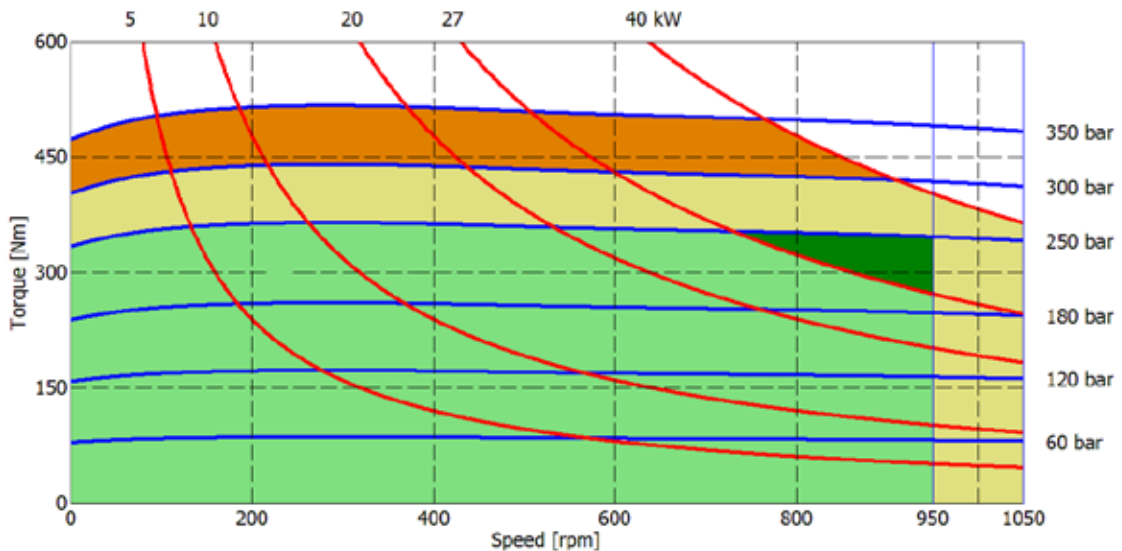


IAM H1 - PERFORMANCE DIAGRAMS

80 cc



100 cc



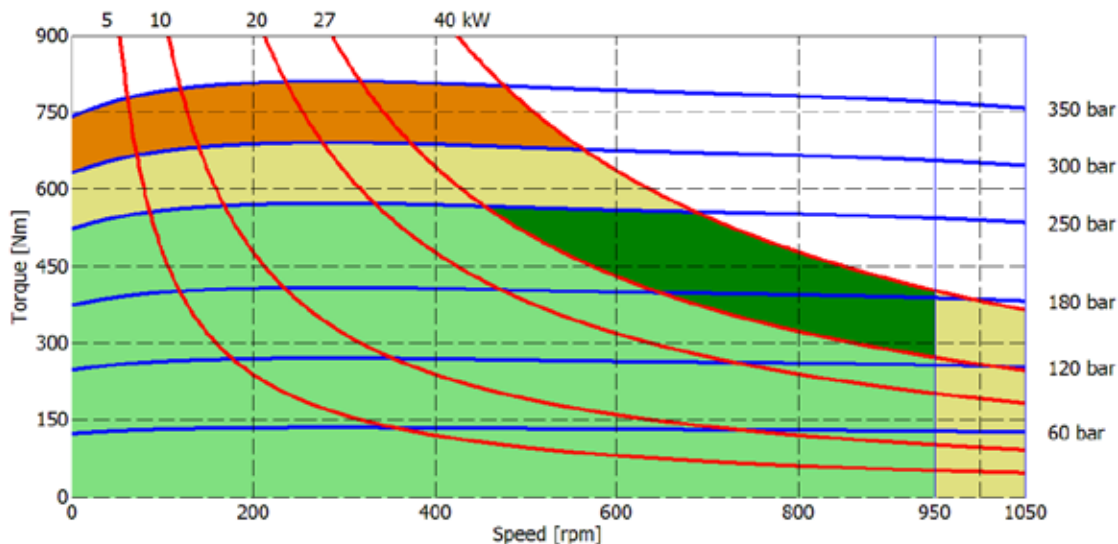
- Continuous operation
- Continuous operation with flushing or intermittent operation (see below for intermittent operation)
- Intermittent operation: permitted for a 15% of duty cycle, for 3 minutes maximum period
- Peak operation: permitted for very short periods (3-5 seconds every 10-15 minutes)

The above diagrams are referring to the hydraulic motor working with a fluid in ideal conditions (viscosity at 40 cSt). In case the working temperature increases and viscosity reach values under the recommended values (see hydraulic fluid recommendations) flushing must be performed or ISO oil grade must be changed. The working temperature must not overcome 70 °C.

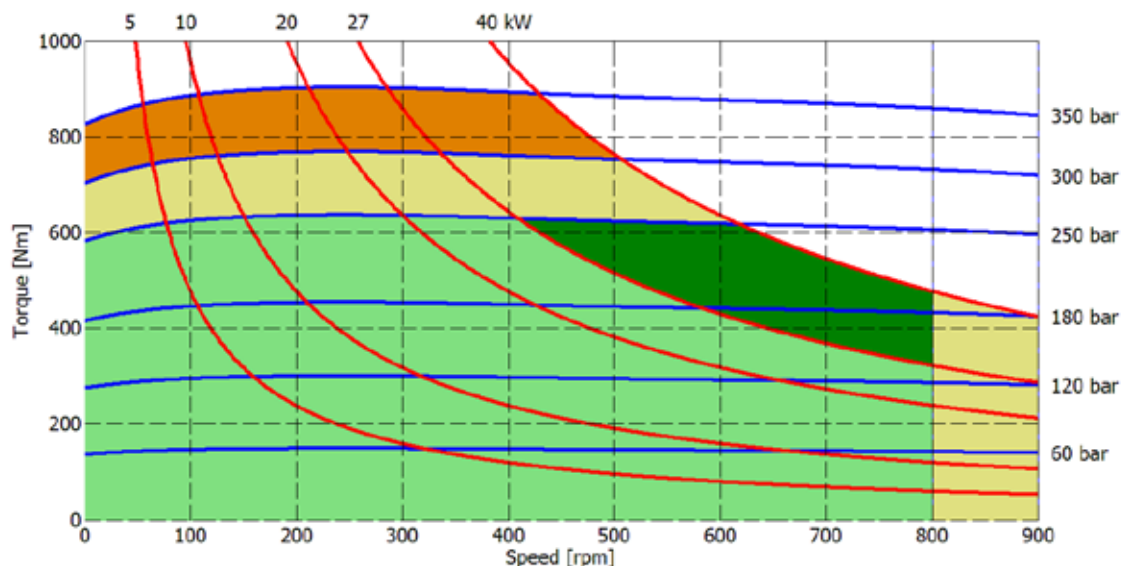
The data specified into the catalogue are for product description purpose only and must not be interpreted as warranted characteristics in legal sense. Italgrou**S.r.l.** reserves the right to implement modifications without notice. All partial or total reproduction and copy without written authorization of Italgrou**S.r.l.** is strictly forbidden.

IAM H1 - PERFORMANCE DIAGRAMS

150 cc



175 cc



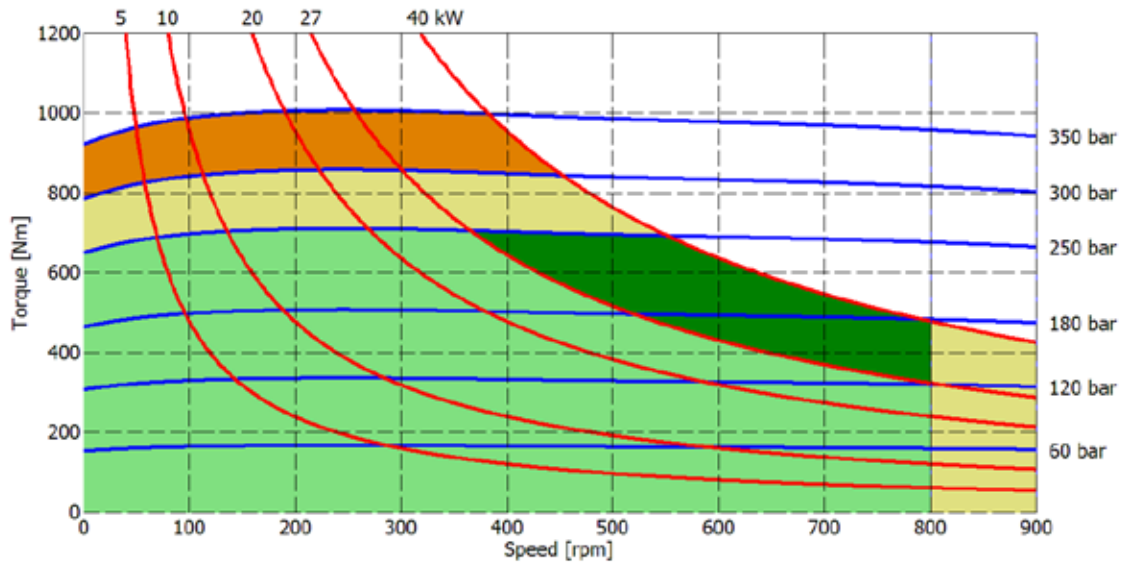
- Continuous operation
- Continuous operation with flushing or intermittent operation (see below for intermittent operation)
- Intermittent operation: permitted for a 15% of duty cycle, for 3 minutes maximum period
- Peak operation: permitted for very short periods (3-5 seconds every 10-15 minutes)

The above diagrams are referring to the hydraulic motor working with a fluid in ideal conditions (viscosity at 40 cSt). In case the working temperature increases and viscosity reach values under the recommended values (see hydraulic fluid recommendations) flushing must be performed or ISO oil grade must be changed. The working temperature must not overcome 70 °C.

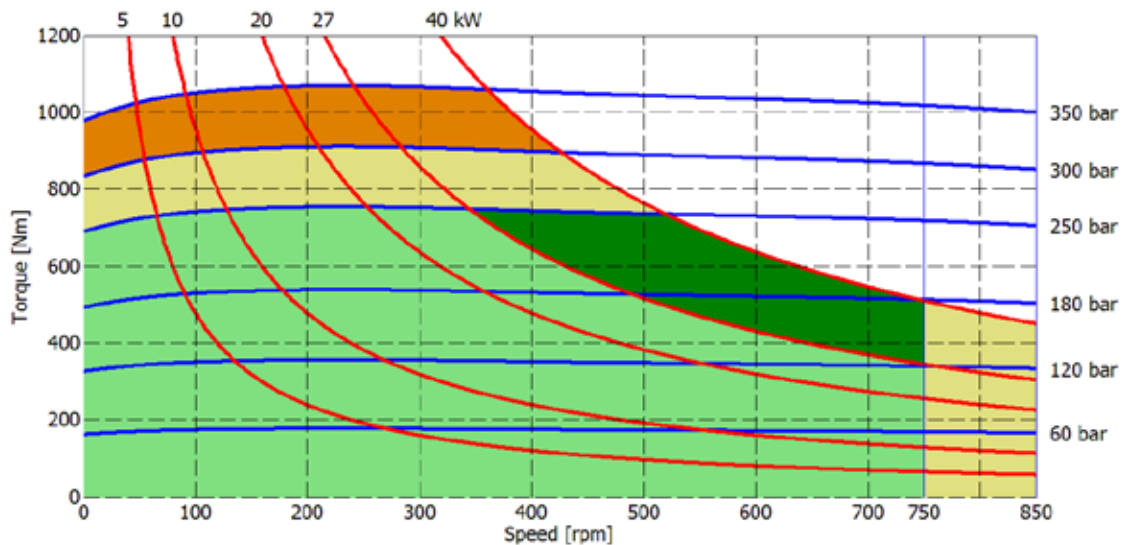
The data specified into the catalogue are for product description purpose only and must not be interpreted as warranted characteristics in legal sense. ItalgrouP S.r.l. reserves the right to implement modifications without notice. All partial or total reproduction and copy without written authorization of ItalgrouP S.r.l. is strictly forbidden.

IAM H1 - PERFORMANCE DIAGRAMS

195 cc



200 cc



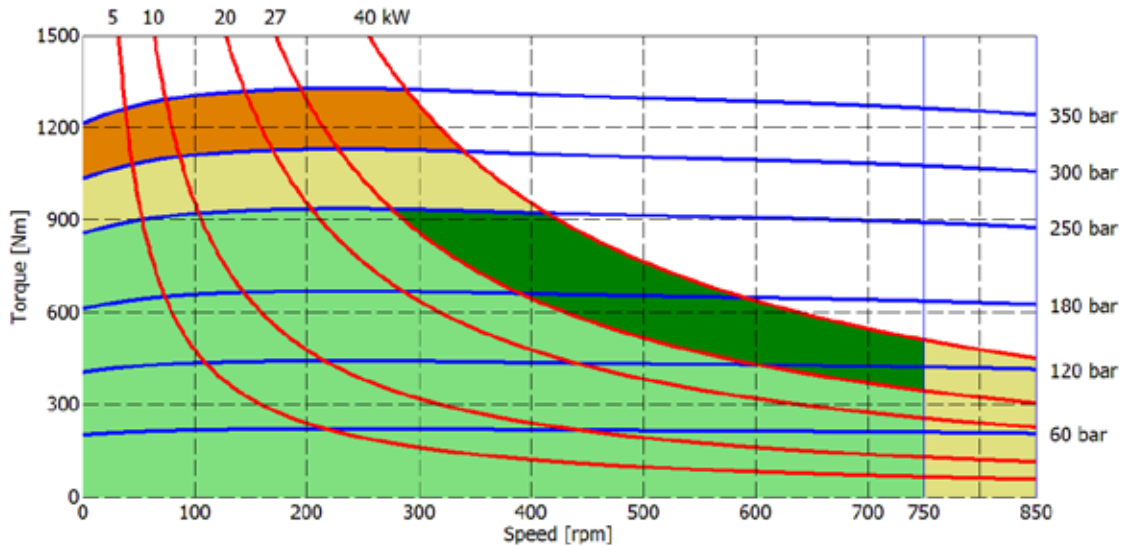
- Continuous operation
- Continuous operation with flushing or intermittent operation (see below for intermittent operation)
- Intermittent operation: permitted for a 15% of duty cycle, for 3 minutes maximum period
- Peak operation: permitted for very short periods (3-5 seconds every 10-15 minutes)

The above diagrams are referring to the hydraulic motor working with a fluid in ideal conditions (viscosity at 40 cSt). In case the working temperature increases and viscosity reach values under the recommended values (see hydraulic fluid recommendations) flushing must be performed or ISO oil grade must be changed. The working temperature must not overcome 70 °C.

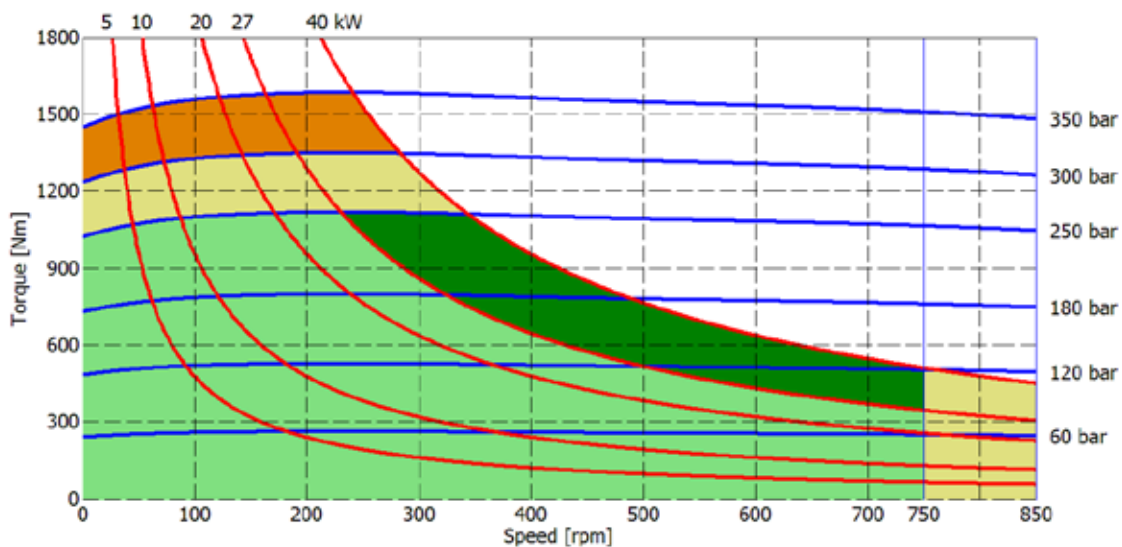
The data specified into the catalogue are for product description purpose only and must not be interpreted as warranted characteristics in legal sense. Italgrou S.r.l. reserves the right to implement modifications without notice. All partial or total reproduction and copy without written authorization of Italgrou S.r.l. is strictly forbidden.

IAM H1 - PERFORMANCE DIAGRAMS

250 cc



300 cc



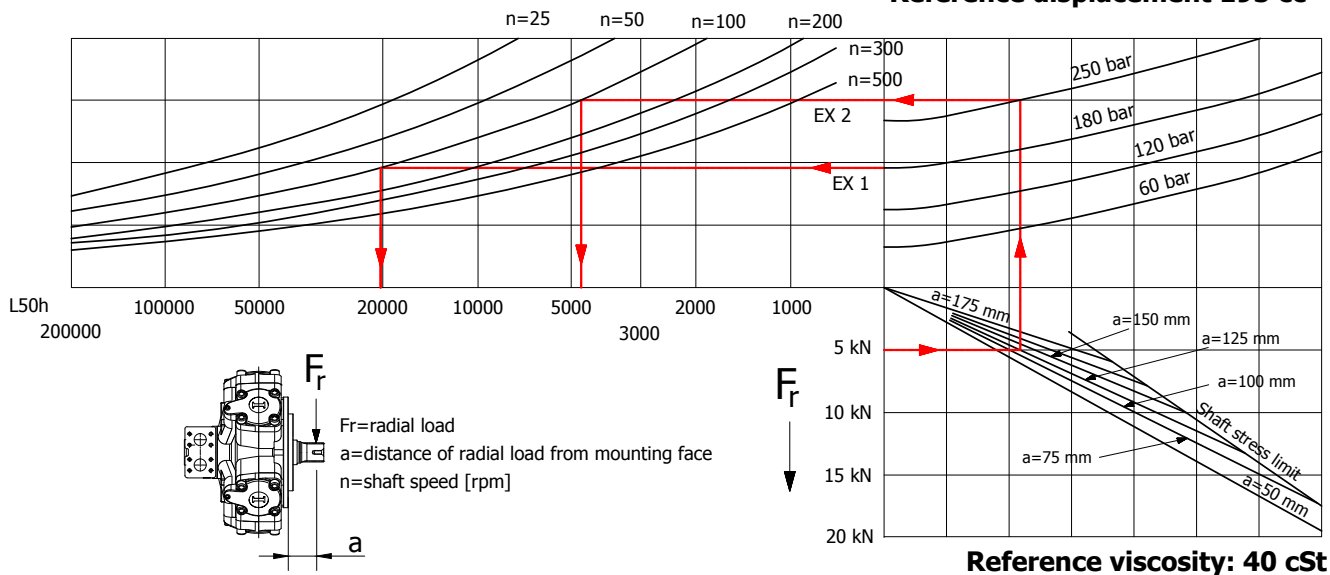
- Continuous operation
- Continuous operation with flushing or intermittent operation (see below for intermittent operation)
- Intermittent operation: permitted for a 15% of duty cycle, for 3 minutes maximum period
- Peak operation: permitted for very short periods (3-5 seconds every 10-15 minutes)

The above diagrams are referring to the hydraulic motor working with a fluid in ideal conditions (viscosity at 40 cSt). In case the working temperature increases and viscosity reach values under the recommended values (see hydraulic fluid recommendations) flushing must be performed or ISO oil grade must be changed. The working temperature must not overcome 70 °C.

The data specified into the catalogue are for product description purpose only and must not be interpreted as warranted characteristics in legal sense. ItalgrouP S.r.l. reserves the right to implement modifications without notice. All partial or total reproduction and copy without written authorization of ItalgrouP S.r.l. is strictly forbidden.

BEARING LIFE

Reference displacement 195 cc



Example:

We suppose (EX1): $p=180$ [bar], $n=100$ [rpm]; we obtain an average lifetime of 20000 [h].

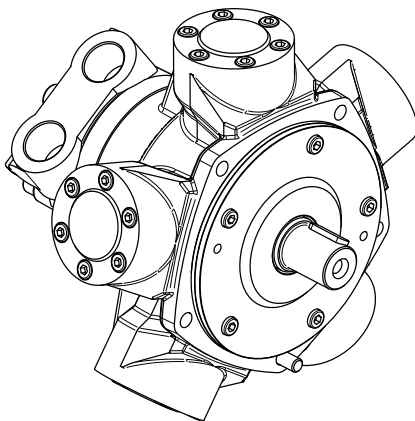
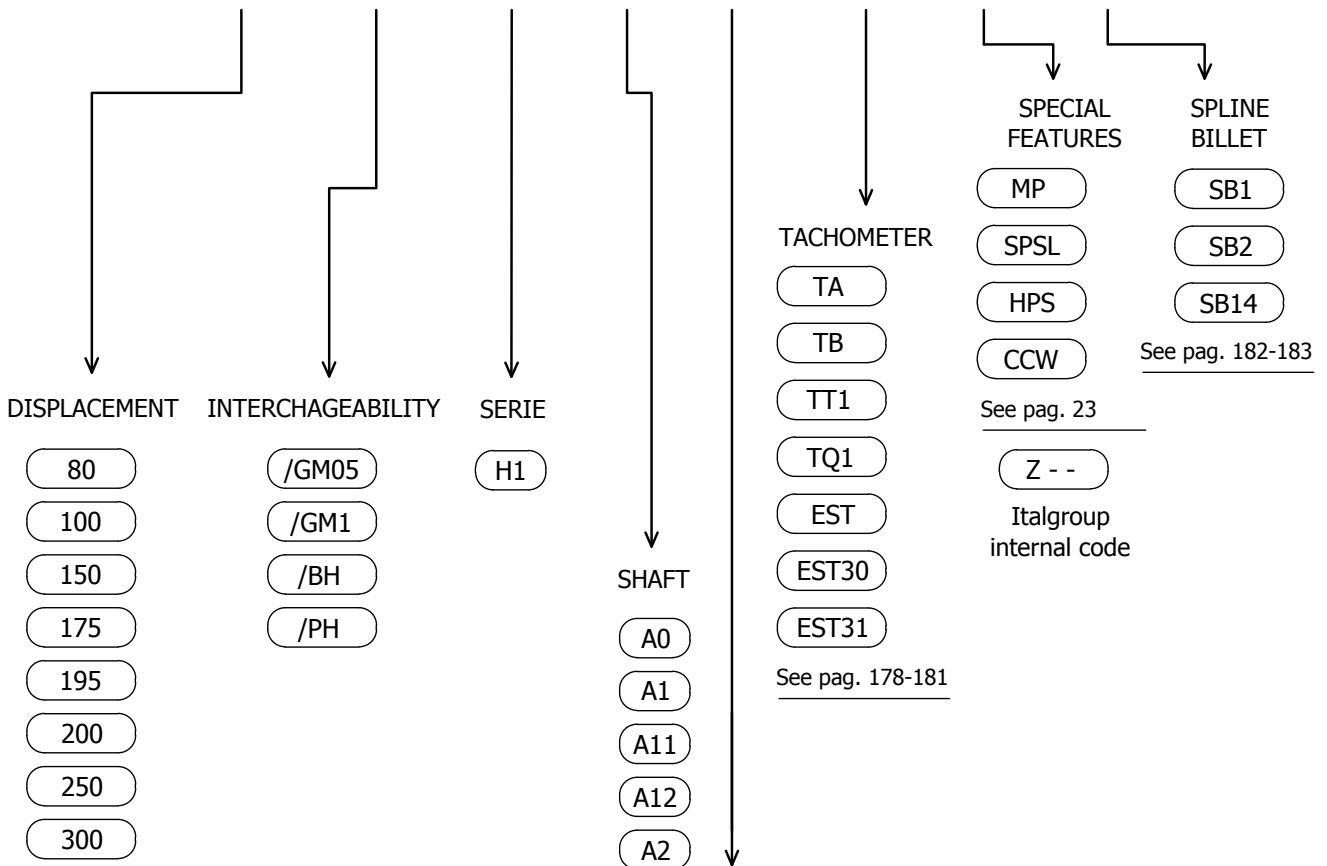
If we suppose (EX2): $F_r=5$ [kN], $a=125$ [mm], $p=250$ [bar] and $n=100$ [rpm], we obtain an average lifetime of 4500 [h].

The above data are referring to the IAM H1 series motors, displacement 195 cc.

The data specified into the catalogue are for product description purpose only and must not be interpreted as warranted characteristics in legal sense. Italgrou S.r.l. reserves the right to implement modifications without notice. All partial or total reproduction and copy without written authorization of Italgrou S.r.l. is strictly forbidden.

IAM H1 - ORDERING CODE

IAM -- -- H1 -- -- -- -- SB -



EXAMPLES:

IAM 100 H1 A0 D40
IAM 195/GM1 H1 A0 D40J SB14
IAM 200/PH H1 A0 D31B

CONTACT US

Italgroup S.r.l.
Via Pacinotti 20/22
41010 - Gaggio di Piano (Modena) – Italy

Tel. +39 059 92 42 57
Fax +39 059 92 01 13
e-mail: italgroup@italgroup.eu
internet: <http://www.italgroup.eu>

REACH US



Europe

Austria
Belgium
Croatia
Czech Republic
Cyprus
Denmark
Faroe Islands
France
Finland
Germany
Greece
Iceland
Italy
Netherlands
Norway
Poland
Portugal
Russia
Slovenia
Spain
Sweden
Switzerland
Turkey
Ukraine
United Kingdom

Africa

Egypt
South Africa
Tunisia

America

Argentina
Brazil
Canada
Chile
Mexico
Peru
USA
Colombia

Asia

China
Hong Kong
India
Indonesia
Iran
Israel
Philippines
Russia
Belarus
Singapore
South Korea
Thailand
Taiwan
United Arab Emirates
Vietnam

Oceania

Australia
New Zealand

