

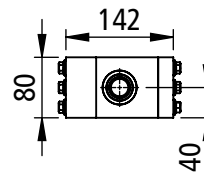
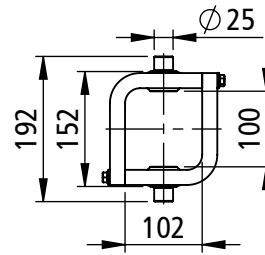
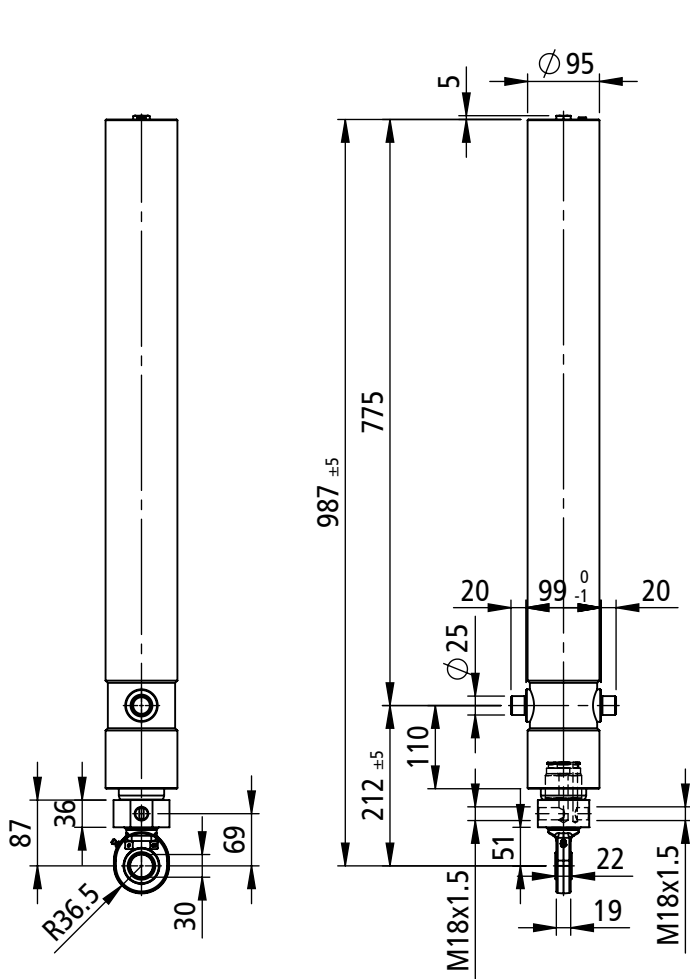
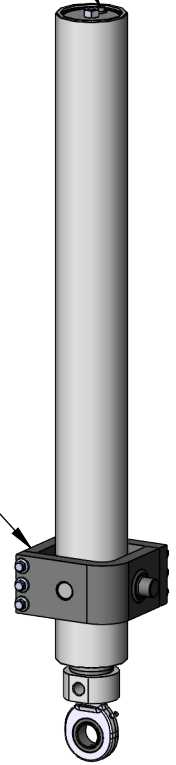

**Double acting smallest stages**

Part Number

**9108600752001**

--

--


**Air bleeder**
**A5L002004K**


|  |                                    |     |   |   |   |                      |                    |                     |                                  |
|--|------------------------------------|-----|---|---|---|----------------------|--------------------|---------------------|----------------------------------|
| <b>mounting dimension</b>              | <b>212 mm + 20 mm min pull out</b> |     |   |   |   | <b>total stroke</b>  | <b>1506 mm</b>     | <b>max pressure</b> | <b>220 bar</b>                   |
| <b>model: SE+DE 1506 75 2 CRN SPU</b>  | <b>code: 9108600752001</b>         |     |   |   |   | <b>weight: 35 kg</b> | <b>1222 001704</b> |                     |                                  |
| <b>extension</b>                       | 1                                  | 2   | - | - | - | -                    | -                  | -                   | <b>number of stages: 2</b>       |
| <b>rod diameter [mm]</b>               | 75                                 | 60  | - | - | - | -                    | -                  | -                   |                                  |
| <b>bore diameter [mm]</b>              | 65                                 | --  | - | - | - | -                    | -                  | -                   |                                  |
| <b>stroke [mm]</b>                     | 769                                | 737 | - | - | - | -                    | -                  | -                   | <b>total: 1506 mm</b>            |
| <b>opening thrust [kN]</b>             | 111                                | 73  | - | - | - | -                    | -                  | -                   |                                  |
| <b>retracting thrust [kN]</b>          | --                                 | 11  | - | - | - | -                    | -                  | -                   |                                  |
| <b>opening oil [dm<sup>3</sup>]</b>    | 3.8                                | 2.5 | - | - | - | -                    | -                  | -                   | <b>total: 6.3 dm<sup>3</sup></b> |
| <b>retracting oil [dm<sup>3</sup>]</b> | --                                 | 0.4 | - | - | - | -                    | -                  | -                   | <b>total: 0.4 dm<sup>3</sup></b> |

## TECHNICAL NOTES AND SPECIFICATIONS

**User responsibility.** Incorrect selection or incorrect use of the here described component and its related items may cause death, personal injury and property damage. All the information here reported are intended for further investigations by users with technical knowledge. The user, as manufacturer of the completed machinery which will incorporate the here described components, is the solely responsible for the final selection of the components. The user must carry out necessary research and tests on components to determine whether, by its design and construction, all performance, endurance, maintenance, safety and warning requirements are met. The user must assure the compliance of the completed machinery with all appropriate laws, directives, norms, industry standards.

The cylinder has been designed to provide only a linear force. The cylinder is not a structural member and must not be used as a stabilizer or be subject to side or pulling load.

**Double-acting telescopic cylinder.** Always complete the opening or retracting operation before inverting the movement. In case of small loads the telescopic stages may opening or retracting out of ordinary sequence, but it is not a malfunctioning. These cylinders are not suitable to keep external loads in a fixed position for long duration. The cylinder will be heavily damaged in case of counterpressure in the hydraulic return line.

**Never exceed the herein specified limits of the cylinder.**

Cylinder rated pressure reflect only the capability of the pressure-containing envelope and not the force transmitting capability of mounting configurations.

Surface coatings are supplied on request. H.S.PENTA warranty does not apply to any kind of corrosion of coated or non-coated parts.

Maximum linear speed less than 0.5 m/s.

Hydraulic oil temperature admitted between -40°C and +100°C.

In case the cylinders must be stored, do not remove the package. Store them in a dry place, not exposed to rain. Do not store the cylinders for more than 6 months.

User shall pay attention to stroke length, loading and cylinder mounting in order to avoid bending or buckling of the cylinder at any position.

Chrome coating type CRN (40 h corrosion test ISO9227-rating 9 ISO10289 - minimum thickness 15 µm) on telescopic stages.

### REMARKS

**[2014.11.24] [2014.11.27]**

Paint RAL 7016 (Vernice RAL 7016)

### REVISIONS

2015.12.09 - Inserito spurgo e modificata tolleranza spallamento

02

2018.04.24 - Aggiornamento dati

03